



Keep The Hair Live And Glossy With Cuticura

On retiring, gently rub spots of dandruff and itching with Cuticura Ointment. Next morning shampoo with a suds of Cuticura Soap and hot water. This treatment does much to keep the scalp clean and healthy and promote hair growth.

SEED, FEED AND FERTILIZER MARKETS

THE SEED MARKET

OTTAWA, Sept. 25.—The cold, damp and rainy weather which prevailed over Ontario and Quebec for the twelve days ending September 14 is conceded to have done untold damage to seed crops; perhaps it destroyed the last remaining chance that there would be some red clover seed. Also alfalfa of the second cutting, while further advanced than the red clover, undoubtedly suffered considerably. There is reported to have been quite a large acreage of alfalfa and alsike seed still in the swath or windrow, which was subjected to the unfavourable weather. All of which means that the yields and quality of these seeds will likely be poorer than formerly forecasted.

The trade is buying some of the new alsike crop, principally the better qualities at this time, for the export market has not yet opened for ordinary export qualities, or old seed. The new crop is now known definitely to be much below a normal one with little No. 1 seed in sight—perhaps a total of 150,000 bushels as compared with 250,000 bushels last year, and in some quarters it is stated that at least one half of this 150,000 bushels is of very poor quality, being badly weathered and foul with false flax, catchfly, trefail and other weed seeds which usually become more prevalent during lean production years. As a further indication of a smaller than usual alsike crop, the price of this seed has advanced over \$1 per bushel at Toledo during the past fortnight, and the market is reported firm with a tendency to still higher price levels. Red clover has registered a slight advance at Toledo also, while timothy prices declined. That there will be a lot of discarded seed oats next spring is a foregone conclusion. The bulk of the oat crop throughout the eastern provinces was caught by the wet spell, while in stock or in the uncut condition. A report from Prince Edward Island states that there is available there at least 12,000 bushels of registered banner oats from the new crop.

WHOLESALE PRICES, LONDON, ENG., SEPTEMBER 15, 1924

Table with columns: Ex-warehouse and cash, English funds converted to dollars and cents. Rows include Red Clover, English Fancy, Red Clover, Chilean Reclaimed, Alsike, Canadian Extra, Alsike and White Mixed Fancy, Timothy, American, Perennial Rye Grass.

WHOLESALE PRICES, TOLEDO AND CHICAGO, U. S. A.

Table with columns: Toledo Produce Exchange, per bush for prime qualities, American Funds, Sept. 13, 1924. Rows include Red Clover, Alsike, Timothy.

SOME FEED IMPORTS FOR THE MONTH OF AUGUST, 1924 AND THE PERIODS OF FIVE MONTHS ENDING AUGUST, 1924 AND 1923

Table with columns: From, Month of August, 1924, 5 months ending Aug. 1924, 5 months ending Aug. 1923. Rows include Beet and Mangold seed, Lb., United Kingdom, United States, Other countries.

Table with columns: From, Month of August, 1924, 5 months ending Aug. 1924, 5 months ending Aug. 1923. Rows include Clover seed, Lb., United Kingdom, United States, Other countries.

Table with columns: From, Month of August, 1924, 5 months ending Aug. 1924, 5 months ending Aug. 1923. Rows include Timothy seed, Lb., United States.

Table with columns: From, Month of August, 1924, 5 months ending Aug. 1924, 5 months ending Aug. 1923. Rows include Turnip seed, Lb., United Kingdom, United States, Other countries.

THE FEED MARKET

The feed situation has changed little since our last report. Millers are said to be running their mills only on part time, and the small output of mill-feed by-products is finding an ample market within Canada, with prices remaining steady. Other feeds of similar purpose have held their strength in the market also. The oat crop, which comprises a large proportion of the total grain crop in Eastern Canada, has suffered much during the past two weeks, owing to the long spell of cold, rainy weather which has prevailed in all the provinces. In Ontario there is still a large proportion of this crop in the stock. Provinces where there are large areas to be cut, and in many places it is now badly lodged. These conditions are expected to reduce the total oat yield, and very much reduce their quality. The cold weather was bad for the corn crops also, but on the other being quoted at about \$2 less.

AVERAGE WHOLESALE PRICE, SEPTEMBER 15, 1924

Table with columns: Cash, car lots or mixed car lots, points of shipment. Rows include Wheat, No. 1 Feed, bulk, per bush, Oats, No. 1 Feed, bulk, per bush, Rye, No. 3 C. W., bulk, per bush, Corn, bulk, per bush, Buckwheat, bulk, per bush, Bran, bagged, per bush, Shorts bagged, per bush, Middlings, bagged, per bush, Feed Flour bagged, per bush.

WHOLESALE PRICES LONDON, ENGLAND, SEPTEMBER 15, 1924

Table with columns: Ex-warehouse and cash, English funds converted to dollars and cents. Rows include First cut clover hay, per ton of 2,000 lbs., Common clover hay, per ton of 2,000 lbs., Town bran, per ton of 2,000 lbs., Town middlings per ton of 2,000 lbs.

WHOLESALE PRICES AT UNITED STATES MARKETS, SEPTEMBER 15, 1924

Table with columns: Carload cash prices per ton on track, American funds. Rows include Bran, Middlings, Linseed Meal, 41% Cottonseed Meal, No. 1 Timothy Hay, No. 1 Clover, No. 1 Alfalfa.

SOME FEED IMPORTS FOR THE MONTH OF AUGUST, 1924 AND THE PERIODS OF FIVE MONTHS ENDING AUGUST 1924 AND 1923

Table with columns: From, Month of August, 1924, 5 months ending Aug. 1924, 5 months ending Aug. 1923. Rows include Indian corn not for distillation—Bush, United Kingdom, United States, Other countries.

Table with columns: Oilcake, cottonseed and cottonseed cake meal—Cwt., United Kingdom, United States, Total. Rows include Oilcake, linseed and linseed oilcake meal—Cwt., United States, Other countries, Total.

THE FERTILIZER MARKET

The trade reports that it has general lessened movement of freight, which has left the transportation companies with a surplus of railway cars, which in turn the firms have been able to secure almost without notice, and receive a service almost on a parity in speed with express shipments. As the result of a stronger feeling in the fertilizer market, most of the materials have advanced in price. Acid phosphate at Baltimore is reported very firm at \$8.75 per ton for run of pile, bulk, basis 16 per cent P. O. and with an extra pro rata charge for average of P. O. and when a buyer specifies a straight 16 per cent phosphoric acid, there is an additional charge of 50 cents per ton. When bagged after being milled and screened, the same material would cost about \$1 per ton more, making a total cost at Baltimore of \$10.50 to \$10.75 per ton. This is about \$1 higher than the price prevailing last spring. Sulphate of ammonia has advanced also, about \$3 per ton over midsummer quotations, as a stronger feeling prevails for the organic materials and potash.

Another factor is advanced as having improved the fertilizer trade this fall, it being the inherent human characteristic to buy on a rising market. A number of firms report that their stocks of mixed fertilizer as prepared for the season were not adequate to meet the demand, which has proven larger than anticipated, and that further mixing and curing could not be accomplished in time to meet the situation. Prompt deliveries by freight are reported to have been unusually satisfactory, as there has been a

AVERAGE WHOLESALE PRICES, SEPTEMBER 15, 1924

Table with columns: Cash, per ton, car lots or mixed car lots, f. o. b. point of shipment. Rows include Mixed fertilizer, Nitrate of Soda, Sulphate of Ammonia, Acid Phosphate, Muriate of Potash, Sulphate of Potash, Bone Meal.

WHOLESALE PRICES, LONDON, ENG., SEPTEMBER 15, 1924

Table with columns: Ex-warehouse and cash, English funds converted to dollars and cents. Rows include Nitrate of Soda, Superphosphate 10% P. O., Nitrate of Soda, S. Delivery \$8.01, Sulphate of Ammonia, 21%, Bone Meal, 3 75-20-0.

IMPOTERS' AND MANUFACTURERS' PRICES TO THE TRADE IN NEW YORK AND BALTIMORE MARKETS

Table with columns: Spot F. O. B. for round lots per 100 lbs. in bags except as otherwise indicated, buyers of broken lots must pay higher prices (American funds). Rows include Nitrate of Soda, Sulphate of Ammonia, Muriate of Potash, Bone Meal.

SOME FERTILIZER IMPORTS FOR MONTH OF AUGUST, 1924 AND THE PERIOD OF FIVE MONTHS ENDING AUGUST, 1924 AND 1923

Table with columns: From, Month of August, 1924, 5 months ending Aug. 1924, 5 months ending Aug. 1923. Rows include Phosphate rock, Cwt., United Kingdom, United States, Other countries.

Table with columns: From, Month of August, 1924, 5 months ending Aug. 1924, 5 months ending Aug. 1923. Rows include Sulphate of ammonia, Lb., United States.

Table with columns: From, Month of August, 1924, 5 months ending Aug. 1924, 5 months ending Aug. 1923. Rows include Kainit, crude German potash salts for fertilizers, Lb., United Kingdom, United States, Other countries.

Table with columns: From, Month of August, 1924, 5 months ending Aug. 1924, 5 months ending Aug. 1923. Rows include Potash, muriate of, crude, lb., United Kingdom, United States, Other countries.

Table with columns: From, Month of August, 1924, 5 months ending Aug. 1924, 5 months ending Aug. 1923. Rows include Soda, nitrate of, Lb., United States, Other countries.

Table with columns: From, Month of August, 1924, 5 months ending Aug. 1924, 5 months ending Aug. 1923. Rows include Superphosphate or acid phosphate of lime, Lb., United States.

Table with columns: From, Month of August, 1924, 5 months ending Aug. 1924, 5 months ending Aug. 1923. Rows include Fertilizers compounded or manufactured, n. o. p. Lb., United Kingdom, United States, Other countries.

RURAL COMMENT

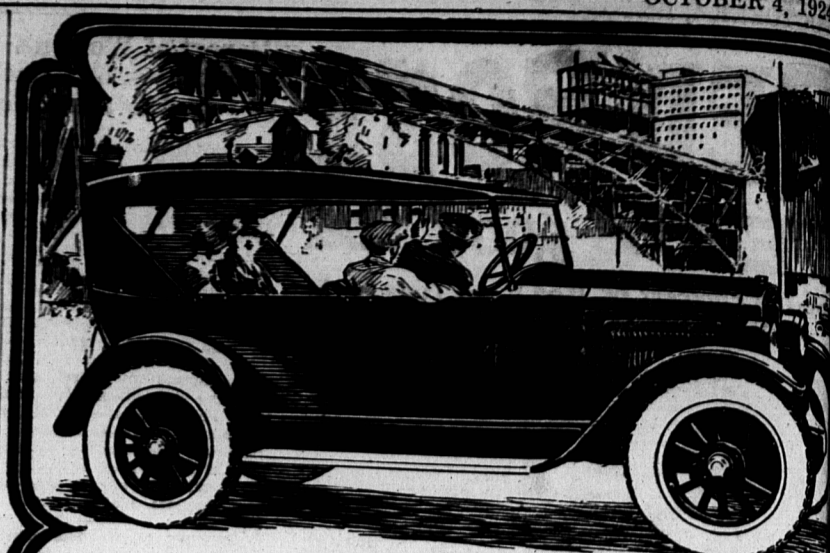
The Maritime Provinces.—Harvesting operations have been interfered with badly by the heavy rains which have prevailed during the past two weeks. A great deal of extra labour has been required in saving the grain crop which has already been cut and in stock, while in many districts fields could not be cut owing to the use of a binder. It is believed that the cereal crop will be much reduced in total yield as a result of the bad weather. Pastures are reported good and the demand for feeding stuffs and fertilizers larger than at the same time last year. Very little seed with the exception of registered banner oats in Prince Edward Island is expected to be available for sale, except, of course, certified seed potatoes, of which there are large stocks in all of the Maritime Provinces, the popular varieties, Green Mountain and Irish Cobbler.

Quebec.—Rainstorms during the past two weeks have proved in some instances disastrous to the grain crop in this province, involving a greater amount of labour in saving the crop than usual, and a much smaller yield than was anticipated may now result. Among dairy farmers there is a steady demand for millfeed by-products and other feeds, and owing to the lower fertilizer prices this fall there is a much larger quantity being bought, particularly phosphate fertilizers.

Ontario.—All the seed crops have been injured to a greater or less extent in Ontario, owing to the still prevailing bad weather which is expected to be a smaller total yield of alfalfa and sweet clover, and even alsike, and particularly red clover this year. Large areas

of these seeds have been lying out in the swath or in the windrow during the past two or three weeks, and the losses from shelling, rotting and discoloration will undoubtedly be large. The oat crop has suffered severely also in this regard. Pastures are particularly good on account of so much rain, while the corn has suffered a setback. The demand for fertilizers and feed concentrates is reported much larger this autumn than at the same period during the past two or three years.

Table with columns: Grain per bush, Spring wheat, Oats, Barley, Peas, Beans, Corn, Bay and straw per ton, Timothy, Clover, Wheat straw, Oat straw, Average.



All Steel Adopted for Greater Safety and Lasting Beauty

In an age of steel—with bridges of steel—ships of steel and trains of steel—with steel the foundation of modern transportation, Overland adopts for greater safety and lasting beauty an all-steel body. While most motor car bodies are skeletons of wood with sheets of steel nailed outside, Overland's body is solid steel—a frame of steel covered with steel—welded into one piece solidly. Only an all-steel body takes an everlasting baked enamel finish, and you can scrub an Overland's baked enamel finish with strong chemicals used to remove road tar, or you can turn the scorching flame of a blow-torch on it without marring its gleaming beauty. It keeps its looks with age. And with all this strength and permanent beauty are linked big power—great economy—dependability and 23 big-car quality advantages, unmatched at anywhere near the price. See this all-steel Overland. Drive it in traffic or over the hills. IN AN AGE OF STEEL—FOR GREATER SAFETY AND LASTING BEAUTY—DRIVE AN ALL-STEEL OVERLAND. Amazingly easy buying terms.



A. HORNE & CO. Charlottetown, GEO. D. POPE & SON Summerdale.

Potato Baskets Strong and well made, bound and double strapped. Lowest prices WHOLESALE AND RETAIL.

Feed Feed We are receiving CARLOADS OF BRAN, SHORTS, OIL CAKE MEAL, CRACKED CORN, FEED CORN MEAL and all kinds of stock FEEDS.

Poultry Supplies It pays to look after the POULTRY FLOCK. Now is the time to speed up the young PULLETS and develop them into early layers. We carry a large and carefully selected stock of POULTRY FEEDS.

Flour Flour We handle many of the best brands of HARD WHEAT and BLEND FLOURS, OATMEAL, ROLLED OATS, TABLE CORN MEAL, Graham Flour, Buckwheat Flour, etc., etc. All at lowest prices WHOLESALE AND RETAIL. Carter & Co., Ltd.

Insidious Eye strain We use this adjective advisedly. Sufferers from Eyestrain may have perfect vision and therefore do not suspect the presence of any eye defect. The motive power of the entire human organism is Nerve Energy. Normal eyes it is computed utilize about 20% of this Nerve Energy, but when Eyestrain is present, a much larger proportion is required. Hence defective eyes, through their consumption of an excessive amount of Nerve Energy, may seriously affect the functioning of other organs of the body, and produce ill health. HAVE YOUR EYES EXAMINED G. F. Hutcheson Optometrist

For Fire Insurance Consult H. M. SIMPSON 156 Richmond Street Phone 369

Professional Cards Palmer & Palmer H. J. PALMER, K. C. Barrister, Etc. Money to Loan Bank of Nova Scotia Building Charlottetown, P. E. I.

MacDonald & McPhee B. A. J. A. McDONALD, H. F. MCPHEE B. A. Barristers, Attorney, Etc. Money to Loan Riley Building Charlottetown

Mark R. McGuigan B. A. BARRISTER, SOLICITOR, ETC. Money to Loan Cameron Block Charlottetown, P. E. Island

Dr. C. C. Archibald Graduate of N. Y. Post Graduate Medical School and Hospital Practice limited to Eye, Ear, Nose and Throat Office Bayer Building Great George Street Telephone 850-J. Office Hours—9 to 12 a. m. 1 to 5

Cunard CANADIAN SERVICE A Thousand Miles of Scenic Splendor on your way to EUROPE YOUR trip to Europe on the popular "A" ships of CUNARD-CANADIAN Line has a magnificent ending with the three days spent on the glorious St. Lawrence River, from Montreal to the Atlantic. Every mile holds a treasure of beauty to delight the just as the ships themselves provide every luxury comfort in transatlantic travel. The "ANDANIA", "ANTONIA" and "AUSONIA" a trio of modern and mighty one-cabin ships that have the happy homes of thousands of delighted travellers they were launched. The "CARMANIA" and "CARONIA", the largest Cabin Class steamships in the world, sail from Quebec giving an opportunity to visit this picturesque and historic city and also enjoy the St. Lawrence Route. For rates and sailing dates, see the Cunard Agent in town, or write to The Robert Reford Company, Limited Montreal Toronto Quebec St. John, N.B.

Sulphur Heals Skin Almost Overnight For unsightly skin eruptions, rash or blotches on face, neck, arms, or body, you do not have to wait for relief from torture or embarrassment, declares a noted skin specialist. Apply a little Menthosulphur and improvement shows next day. Because of its germ destroying properties, nothing has ever been found to take the place of this sulphur preparation. The moment you apply it healing begins. Only those who have had unsightly skin troubles can know the delight this Menthosulphur brings. Even fiery, itching eczema is dried right up. Get a small jar of Rowles Menthosulphur from any good druggist and use it like cold cream. 13

EASTERN STEAMSHIP LINES, INC. International Line S. S. GOVERNOR DINGLEY will leave St. John Wednesdays at 8 a. m., and Saturdays at 7 p. m. for Boston. Wednesday trips are via Eastport and Lunenburg, due Boston about 10 a. m. Thursday. Saturday trips to Boston direct, due Sundays at 2 p. m. Excellent Passenger accommodation. Express dispatch of freight to Boston and New York and points South and West. A. C. CURRIE, Agent St. John, N. B.