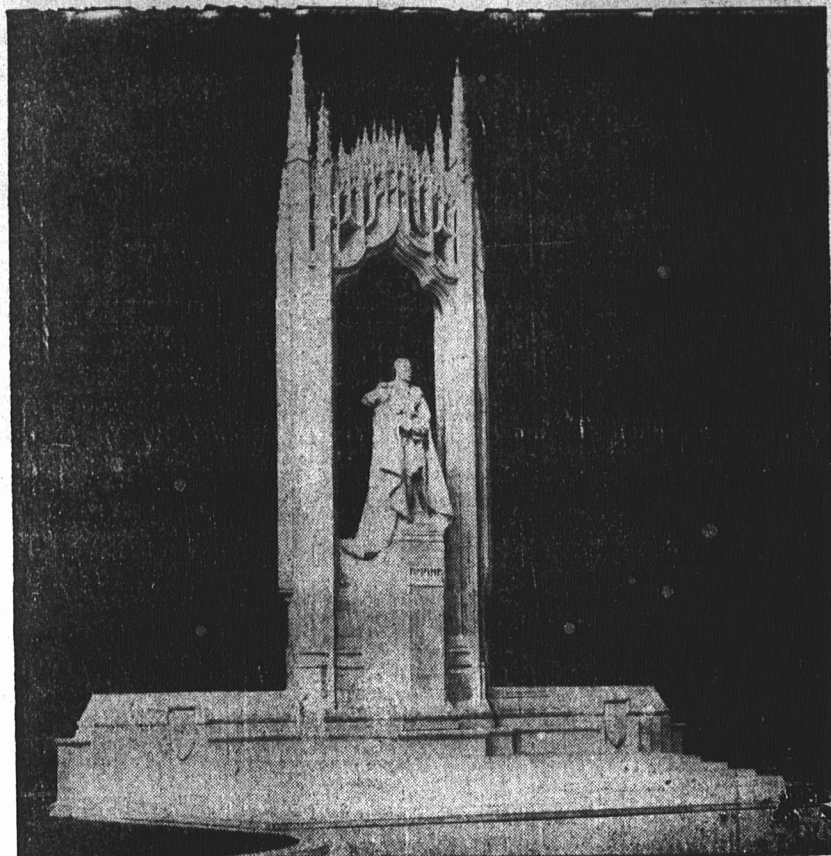


NEWS of the WORLD in PICTURES



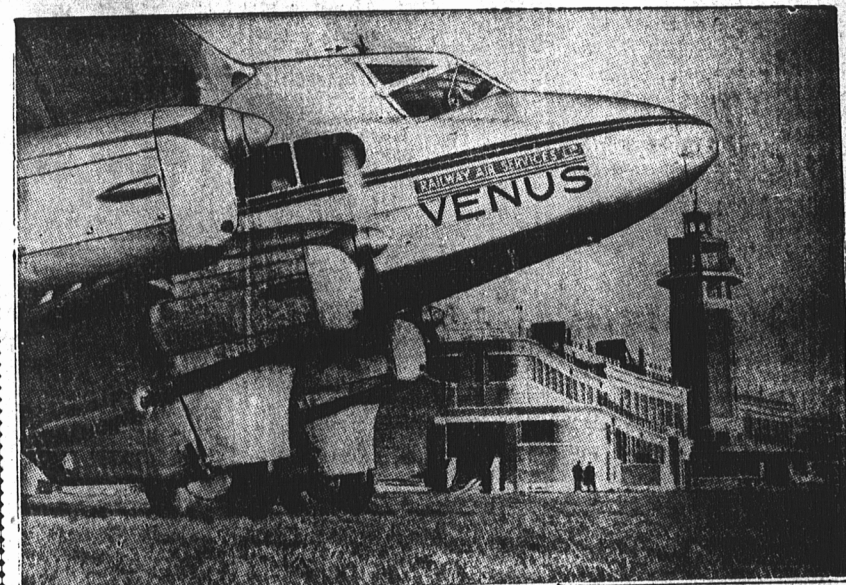
The King and Queen and Queen Mary have approved the plan for the erection of a statue adjacent to Westminster Abbey, as the national memorial to his late Majesty King George V. Sir William Reid Dick, of the Royal Academy, will be the sculptor, and Sir Giles Robert Scott, the architect for the scheme. This picture shows a model of the statue executed by John B. Thorp.



Pressing important changes in German economic policy is the appointment of Walter Funk, above, veteran Nazi economist minister, to succeed Dr. Hjalmar Schacht as Reichsbank president.



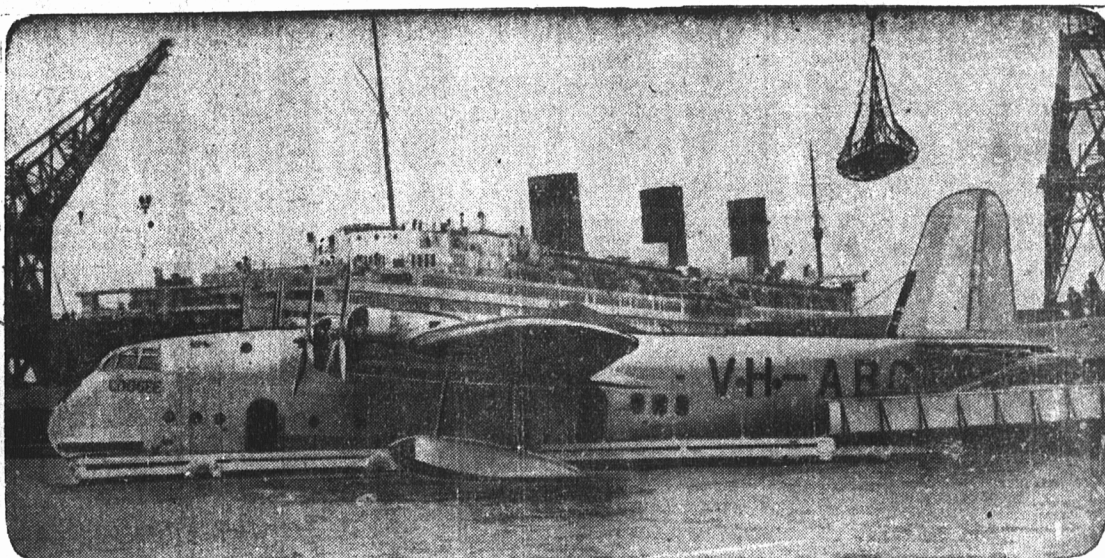
On the eve of his departure for England to take up residence, Rt. Hon. E. B. Bennett, recent Leader of the Opposition at Ottawa was guest of honor at a banquet in the Royal York Hotel, Toronto, at which time hundreds of citizens packed the hall to pay him tribute. He is shown (upper left, on the right) with Hon. Albert Matthews, Lieutenant-Governor; upper right, receiving an illuminated address from Mayor Day on behalf of Toronto; Lower left, part of the huge and enthusiastic audience; lower right, being greeted by Alfred Rogers, with F. K. Morrow, one of the joint chairman, in the background.



This British air liner is not, as it seems, large enough to be moored to the top of the airport control tower in the background. That is merely the effect given by the tricky camera angle in this picture of the administration building of Liverpool's new airport. The field is thoroughly modern and is regarded as a model for establishments of its kind. The administration building, designed in the form of a terrace, forms a perfect vantage point for spectators of activities on or over the field.



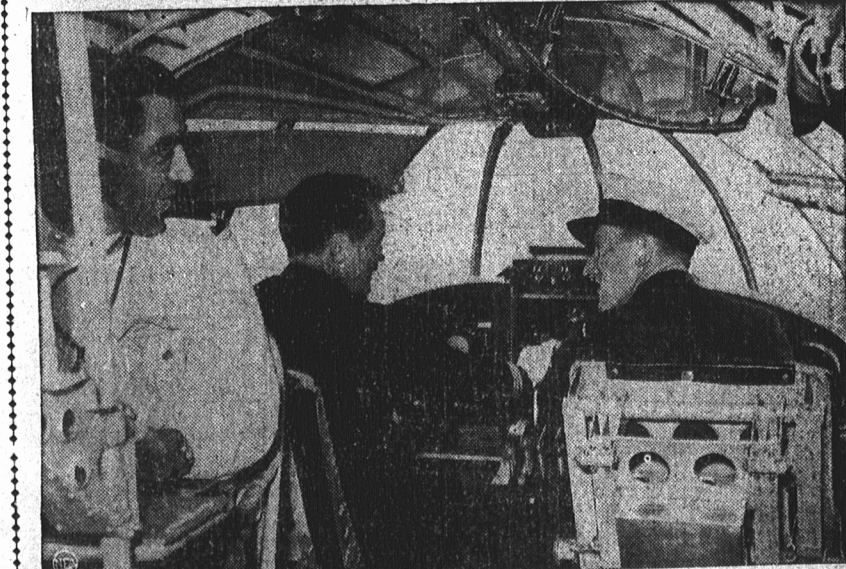
Dr. Katharine B. Blodgett, of the Schenectady, N. Y., General Electric laboratories, has made an oily film, four-millionths of an inch thick, which makes glass "invisible." With it glass admits more than 99 per cent. light against the 92 per cent. now possible and abolishes reflection.



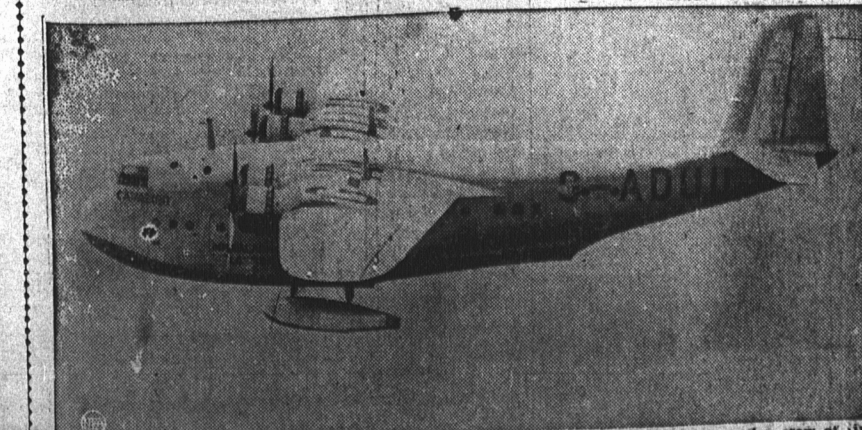
This striking picture shows one of Imperial Airways huge flying boats, the "Coogee" at her moorings in Southampton, with the Queen Mary, the 35,000-ton pride of Britain's merchant fleet, now in drydock for an overhaul, in the background, two symbols of Britain's habit of being first.



Map shown border town of Munkacs where Czechs attacking Hungarian forces are reported to have killed four officers and five soldiers.



A view of the flying ship Cavalier's control room from the inside during a flight on the same course where it met disaster. Left to right, Radio Engineer Patrick Chapman, former Commander, Neville Cumming and Lieut. Nell Richardson. Chapman and Richardson were on the plane when it came down in the Atlantic.



The Cavalier, British Imperial Airways passenger liner, in flight. Eight passengers and a crew of five were on board when storm forced the ship into the Atlantic. Ten of them were saved and three drowned.



Nelson Eddy, screen and stage master of romantic ballads, is pictured with Mrs. Eddy, the former Ann D. Franklin, outside Las Vegas, Nev., courthouse just after their surprise marriage.



His slowway wife probably cost Lieutenant-Com mander Russell Holderman \$2000 first prize money in the New-Miami air race. After kissing him goodbye, as seen at left, Mrs. Holderman suddenly climbed in (right) as he took off from Floyd Bennett Field. Max Constant, Hollywood, Cal., flier, beat Holderman by only 38 seconds.

