



"Whatever the weather, he comes sneaking round to see if anybody is in here after closing time." Humourist.

FOR INCREASED INCOME WE RECOMMEND: NATIONAL LIGHT & POWER CO. 6% FIRST MORTGAGE BONDS DUE NOV. 1st, 1949 INTEREST EARNED AFTER DEPRECIATION OVER 1.85 TIMES DURING 1938 FULL PARTICULARS ON REQUEST. F. J. BRENNAN & COMPANY LTD. E. M. BAGNALL—MANAGER Bank of Nova Scotia Building Charlottetown

Advertising Rates—Payable in Advance Minimum Charge for Any Advertisement 25 Cents. Central Guardian locals, 60 per word; Western and Eastern locals 60 per word; Announcements and Coming Events 30 per word; Classified 20 per word; In Memoriam Notices, 70c per inch; Lists of Moral and Spiritual Offerings, Cards, etc., 40c per name; Letters of Condolence 10c per inch; Wedding engagements 40 words for \$1, and 10 cents for every additional 3 words. Notices of Thanks and Appreciation, 70c per inch or 40c per word. Lists of Subscriptions 40 cents per inch. Address and Pre-emption \$1.00. Other rates on application.

Wanted: WANTED TO RENT SMALL TWO or three room furnished apartment, moderate rent. Apply Box E care Guardian, L-401-2-18-31. Miscellaneous: WANTED BEAUTY SHOPPE. SPECIALS. Also in advanced student work: Permanents \$1.50 up. Free marcel, etc. L-404-2-18-31. Female Help Wanted: WANTED IMMEDIATELY GIRL for housework. Apply evenings, 6 Grafon. L-423-2-20-31. Strayed: STRAYED FROM RANCH SIVVER female fox, Joseph Matheson, Emerald. Reward, L-444-2-21-1.

Do You Need Money \$50 — \$500? We lend money to pay old bills, to purchase necessities, to take that needed vacation or for any useful purpose. No embarrassing questions to borrower or endorsers. GENERAL FINANCE EASTERN LIMITED Phillip's Building Grafton Street Charlottetown, P. E. I. Look for Conventional Loan Sign Office Hours—9.00—5.30 Saturdays 9.00—5.00

Professional Cards: D. F. ARCHIBALD Chartered Accountant 140 Richmond Street Phone 47. F. O. Box 12

MCLEOD & BENTLEY W. E. BENTLEY, K.C. J. A. BENTLEY, K.C. C. F. BENTLEY, LL.B. Barristers and Attorney-at-Law MONEY TO LOAN 100, Richmond Street

MacGUGAN & TRAINOR MARK R. MacGUGAN, K.C. C. ST. CLAIR TRAINOR, B.A. Barristers, Solicitors, Etc. MONEY TO LOAN Office: Over Provincial Bank, Richmond Street, Charlottetown

PALMER & HASLAM H. J. PALMER, K.C. A. J. HASLAM, B.A., LL.B. BARRISTER, ETC. Bank of Nova Scotia Chambers, Charlottetown, P.E.I. MONEY TO LOAN Phone 55 P.O. Box 127

CUTCLIFFE & ANDREWS FUNERAL DIRECTORS AND EMBALMERS Hunter River and Bradshaw Day and Night Service

H. F. McPHEE, B. A., K. C. NOTARY, ETC. BARRISTER, SOLICITOR 100-102, Charlottetown BELL & MATHIESON MONEY TO LOAN Cameron Block, Charlottetown, P.E.I. R. B. Bell, D. L. Mathieson, LL.B. Barristers and Solicitors L-400-2-21-31

STOCK QUOTATIONS N. Y. Stock Exchange Montreal Stock Exchange

Table with columns for Stock, Close, and Montreal Stock Exchange. Lists various stocks like Am Radiator, Am Tel, Am Water, Anacosta, etc.

Stocks Drift Downward In Montreal Mart

MONTREAL, Feb. 20 (CP)—Scattered selling waves rolled in on the stock market today and pushed prices back fractions to two points. All groups retreated before the pressure but rails showed the biggest losses with National Steel Car dropping two points to 54 and Canadian Car 1-2 to 14 3-8.

MINING

Table with columns for Stocks, Close, and Mining. Lists stocks like Anne Oil, Afton Oil, A P Con, etc.

In Montreal THE Windsor ON DOMINION SQUARE J. ALDERIC RAYMOND VICE PRESIDENT CHAS. H. SENDREY MANAGER

Currencies NEW YORK, Feb. 20 (AP)—The Netherlands guilder slipped .08 of a cent in terms of the United States dollar today as Dutch money continued to move to other world financial quarters. The closing price of 53.57 cents for the guilder was the lowest in more than 11 years.

Banks (Canadian Press) Close Stocks Canada, Commerce, Montreal, Nova Scotia, Royal Bk.

UNDATED MONEY BOX (By The Canadian Press) Closing exchange rates At Montreal—Pound 4.70 7-8; U.S. dir 1.09 15-32; franc 2.66 6-7-8.

MONTREAL CURB (Canadian Press) Selected mining quotations on Montreal Curb market today were: Beaufor 13, Cent Cad 18, Thomp Cad 22.

Grain

WINNIPEG, Feb. 20 (CP)—Dispiriting political news from Europe and freezing temperatures in sections of the United States winter wheat belt combined to lift wheat futures prices fractionally in steady trading at Winnipeg today. Export sales of Canadian wheat were placed at around 150,000 bushels.

Produce Prices

MONTREAL, Feb. 20 (CP)—February and March butter futures dropped 1-8 of a cent on the produce section of the Canadian commodity exchange today. Butter ruled steady but cheese and eggs remained unquoted.

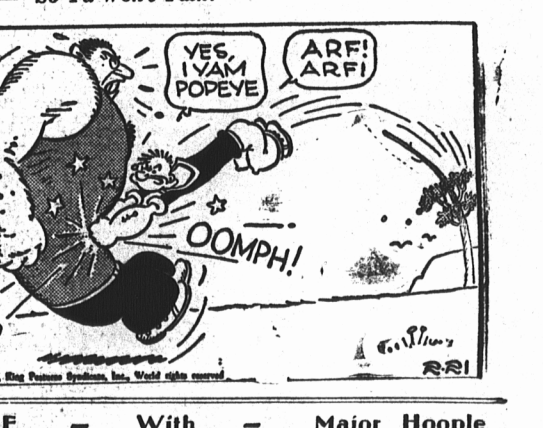
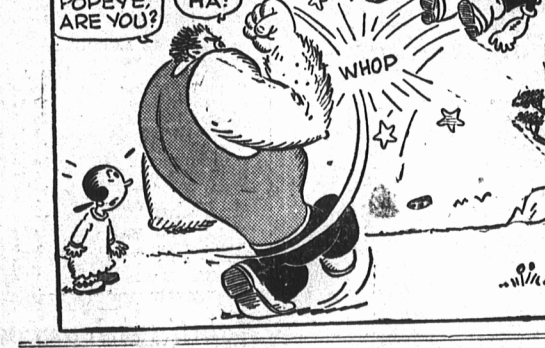
New York Curb

Table with columns for Stocks, Close, and New York Curb. Lists stocks like Am Gas Elec, Am Cyan B, Am Super Power, etc.

Montreal Curb

Table with columns for Stocks, Close, and Montreal Curb. Lists stocks like Abitibi Com, Abitibi Pfd, Asbestos, etc.

Thimble Theatre. Starring POPEYE — Now Showing—"Rockabye Baby on the Treetop." — Tomorrow—"So Ya Won't Talk!"



OUT OUR WAY By J. R. Williams



OUR BOARDING HOUSE With Major Hoople



OUR BOARDING HOUSE With Major Hoople



OUR BOARDING HOUSE With Major Hoople

