

First Queen's Liberal Association

The annual meeting of the First Queen's Liberal Association will be held in Breadalbane Hall on Thursday, July 15th, at 8 p.m.

Advertising Rates—Payable in Advance
Central Guardian locals, 4c per word; Western and Eastern locals, 2c per word; Announcements and Coming Events, 5c per word; Classified Spiritual Offerings, Cards, etc., 4c per name; Letters of Condolence, 70c per inch; Notices of Thanks and Appreciation, 70c per inch or 4c per word. Other rates on application.

For Sale

FOR SALE — 28 CHEVROLET. Registered. Fred S. Barrett, Longwood Ave. L-297-7-13-31.
FOR SALE — HAY SALT 140 LB. bags 95 cents. Apply Cash and Carry. L-339-7-14-21.

Miscellaneous

SPECIAL DISCOUNTS IN USED RANGES, also guaranteed all-cast ranges. F. H. Trainor, 80 Grafton St. L-341-7-14-31.
OUR MATURING POLICIES ARE great business-getters. If you insure now you'll be just as pleased as our old policyholders. Sun Life policies satisfy. Consult J. A. Moore, Currie Bldg., Charlottetown.

Wanted

WANTED — A SMALL APARTMENT or large front lower room. Box 421. L-372-7-15-31.

Female Help Wanted

EXPERIENCED COUNTRY GIRL wanted for general housework. Apply Guardian. L-306-7-13-31.

WANTED AN EXPERIENCED maid for general housework. Must be able to do plain cooking. References required. Write A. B. care Guardian. L-298-7-13-31.

WANTED — MIDDLE AGED woman to assist at Housekeeping in family of two. Write K. care Guardian. L-279-7-13-31.

WANTED — CAPABLE MAID to assist with general housework in country. No children. Write C. care Guardian giving references and wages expected. L-359-7-15-31.

H. K. S. HEMMING REAL ESTATE AGENT 88 Great George Street
I offer the use of my office to property owners and those wishing to buy or rent houses and other buildings and vacant lots as a REAL ESTATE EXCHANGE, a place in which people can meet and agree upon terms. That such a medium is needed is evident from the fact that listings of all kinds are increasing daily. Here are some of them.

APARTMENTS TO LET
7 ROOMS, ROCHFORD Street. Excellent condition. Beautiful location. \$45.00, heated.
7 ROOMS, HILLSBORO Street, \$25.00. Well located.

HOUSES TO LET
8 ROOMS, UPPER PRINCE. Very fine. \$35.00.
9 ROOMS, UPPER PRINCE. Excellent value. \$35.00.

HOUSES FOR SALE
THREE BUNGALOWS
Felling Street \$650.00.
Upper Prince \$300.00.
Upper Prince \$300.00.

Male Help Wanted
WANTED — MAN FOR FARM work. C. W. Mallett, Charlottetown R. R. 6. L-276-7-13-31.

Lost
LOST — BETWEEN ST. ANDREWS and Dunstaffnage. Buick Hub Cap. Finder notify Guardian. L-332-7-14-31.

HOUSES WANTED TO BUY
Several clients with money to invest, asking for houses ranging from \$4000 to \$20000 being in your list.

STOCK QUOTATIONS

MORNING STOCK LETTER

MONTREAL, July 14—Further crop damage reports in the Canadian west sent both Chicago and Winnipeg wheat prices up the full limit of five cents. The New York and Canadian exchanges were, however, fractionally lower. A rise in gasoline prices in the eastern United States aided the oil shares advancing to a high of 87 reading slightly to close at 86, up almost two points for the day. Dominion Tar Common and Dominion Steel stocks were also strong features among the industrials. The speculative rally with Kerr Addison closing at \$2.90 and Moneta Porcupine at \$1.75, scoring sharp advances under large volume. Sherwin Gordon was the strong spot among the base metals, while Western Canadian oils as a group were also strong. The local bond market was firm but inactive with Beulahmors 5s being the feature closing 2 1-2 points up. Newprint production in Canada for June 310,871 tons up 1-2 per cent from May record high and 15 per cent ahead 197 per cent.

New York Stock Exchange

(Supplied by Pittfield and Co., members of Montreal Stock Exchange and Curb Market)
Close
Al Chem 227 228
Am Can 104 104
Am For Pr 8 8 3/8
Am Rad 20 20 3/8
Am Tel Tel 170 169 1/2
Am Water 18 1/2 18 1/2
Atchafalaya 55 55 1/2
Atchafalaya 31 1/2 31 1/2
Atchafalaya 31 1/2 31 1/2
Atchafalaya 31 1/2 31 1/2
Atchafalaya 31 1/2 31 1/2

Canadian General Investments Ltd.—Six months June 30 net income equal to 23.8 cents per share capital stock as compared to 55.6 cents for all 1936.

New C. N. R. Equipment Bonds —Tenders called for \$14,300,000 2 1-2 per cent ten year serial equipment trust bonds, interest and principal payable in Canadian funds. Heretofore equipment trust issues have been sold in New York N. R. U.

NEW YORK, July 14—In anticipation of a boom of shipbuilding President Roosevelt yesterday reviewed the capacities of the East Coast Navy Yard for the building of government vessels. The dividend meetings scheduled for today are Continental Can and Woolworth. Petroleum Institute reported a reduction in gasoline over July 1st, for June a reduction of 1,354,000 barrels and a reduction of 49,000 barrels. We would expect the stock market today to be irregular again and would still look for higher prices for the farm implements, mail orders, some of the oils and amusements.

Montreal Stock Exchange

(Supplied by Pittfield & Co., members of Montreal Stock Exchange and Curb Market)
Close
Acme Oil 14 1/2
Aiton 4
A P Con 40 1/2
Brazillian 24 1/2
Bruck Silk 6
B C Pw A 35 1/2
But Prod 6
Can Cement 16 1/2
Can Nor Pr 16 1/2
Can Car Pfd 25 1/2
Can Car Ftd 25 1/2
Can Hygro Pfd 85
Can Ind A A 85
Can Pac 3
Can Steam 3 1/2
Coke 25 1/2
Cock Plov 14 1/2
Cons Smelt 81
Dist Seagrass 81
Dom Ftd 25 1/2
Dom Bridge 25 1/2
Dom Steel B 23 1/2
Dom Steel C 23 1/2
Dom Tex 15 1/2
Eng Elec A 15 1/2
Eng Elec B 15 1/2
Eng Elec W 24
Fond Co 13 1/2
Gen Ward 13 1/2
Goodyear 41
Gypsum 14 1/2
Ham Bridge 30 1/2
Int Nickel 14 1/2
Int Pow Pfd 61 1/2
Int Pow Wtd 61 1/2
Masey Harris 11
McColl Pt 11 1/2
Ment Brew 31 1/2
Nat Steel Car 40 1/2
Noranda 50
Power Corp 63
Quebec Power 22
Shawmut 18
St Law 28 1/2
St Law Pfd 33 1/2
St Can Pow 84
Street of Can 84
Win Elec A 84 1/2
Win Elec B 84 1/2

Montreal Curb

(Supplied by Pittfield & Co., members of Montreal Stock Exchange and Curb Market)
Close
Asbestos 7 1/2
Beulahmors 23 1/2
Brew Corp 9
Bath A 3
Can Vickers 20 1/2
Don A 20 1/2
Fraser 46 1/2
Fraser V T C 46 1/2
Hir Walker 48 1/2
Home Oil 226
Imp Oil 21
Int Petco 34 1/2
Melchers A 41
Price Pfd 67
Revivite 50
Sher Wms 24

Mining

(Canadian Press)
TORONTO, July 14—
Close
Acme Oil 14 1/2
Aiton 4
A P Con 40 1/2
Brazillian 24 1/2
Bruck Silk 6
B C Pw A 35 1/2
But Prod 6
Can Cement 16 1/2
Can Nor Pr 16 1/2
Can Car Pfd 25 1/2
Can Car Ftd 25 1/2
Can Hygro Pfd 85
Can Ind A A 85
Can Pac 3
Can Steam 3 1/2
Coke 25 1/2
Cock Plov 14 1/2
Cons Smelt 81
Dist Seagrass 81
Dom Ftd 25 1/2
Dom Bridge 25 1/2
Dom Steel B 23 1/2
Dom Steel C 23 1/2
Dom Tex 15 1/2
Eng Elec A 15 1/2
Eng Elec B 15 1/2
Eng Elec W 24
Fond Co 13 1/2
Gen Ward 13 1/2
Goodyear 41
Gypsum 14 1/2
Ham Bridge 30 1/2
Int Nickel 14 1/2
Int Pow Pfd 61 1/2
Int Pow Wtd 61 1/2
Masey Harris 11
McColl Pt 11 1/2
Ment Brew 31 1/2
Nat Steel Car 40 1/2
Noranda 50
Power Corp 63
Quebec Power 22
Shawmut 18
St Law 28 1/2
St Law Pfd 33 1/2
St Can Pow 84
Street of Can 84
Win Elec A 84 1/2
Win Elec B 84 1/2

Produce Prices

MONTREAL, July 14 — (CP)—Wheat, Northern, No. 2 \$1.37 1-8; barley, Canadian Western, No. 3 \$3 1-8; oats, feed, No. 1, 72 1/2-3; No. 2, 71 5-8; oats, Canadian western, No. 3 75 5-8; flour, spring wheat patents, firsts \$8.60; seconds \$8.20; rye, choice \$6.10 to \$6.20; white corn \$6.20 to \$6.30; bran, ton \$28.25; shorts, ton \$34.25; middlings, ton \$42.25; rolled oats, bag 90 lbs \$4.25; hay, No. 2, per ton, carlots \$9.00.

MONTREAL CURB

(Canadian Press)
Close
Pioneer 385
Premier 109
Press Met 240
Pres Air 30
Red Auth 140
Red C 393
Red Lake 74
Lee MacD 77
Roche 85
Royalty 48 1/2
St Ant 16 1/2
Shawmut 54
Sherritt 173
Siaco 270
Sladen Mal 375
Stadacona 104
Sud Basin 130
Sud Cont 405
Sullivan 127
Sylvanite 320
Tashota 127
Teck Hugh 495
Texas 190
Towamog 215
Treadwell 112
Uchi 85
Un Gas 15 1/2
Un Oil 15 1/2
Ventures 30
Waite Amu 296
White Eagle 100
Wood Cad 2
Wright Harg 635

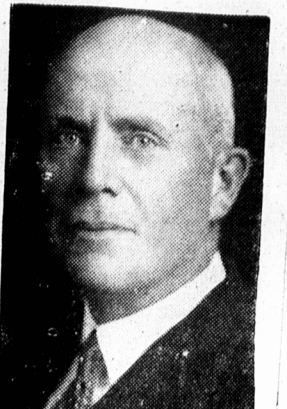
Livestock

MONTREAL, July 14 — (CP)—Hogs on rail grade made \$12.50 for bacon, live and \$9.70 weighed off cars, and \$9.30 off trucks. Sows made \$8.95 rail grade and \$6.65 off cars.

Grain

CHICAGO, July 14 — (AP)—Higher prices of wheat formed the rule late today as well as early. Crop reports stressed damage being done by black rust in spring wheat areas both of the United States and of Canada. A handicap, however, to friends of higher prices was apparent absence of any export market for United States or Canadian wheat. Wheat closed unchanged to 1 1-8 cents higher, July 1-2 to 1 1/8-1-8, Sep. 1-2 1-8 to 3-8, corn 7-8 to 1 1-2 down, Sep. 1-2 1-2 to 5-8, Dec. 1-1-2 to 5-8, and oats 3-8 off to 1-8 up.

Elected President



J. G. PARKER, B. A., F. I. A., F. A. S., F. A. I. A., General Manager and Actuary of Imperial Life Assurance Company, newly elected President of the Life Insurance Institute of Canada.

ANITA LOOS' SARATOGA

(Continued from page 2)
But Kiffie was not glad to see her. She ran into his room, her arms outstretched in love and joy. She stopped suddenly. There was a look on Kiffie's face she had never seen before. It was not only anger she saw, but hatred. What could have happened in the little while since she had seen him, to make him look at her like that?
At first he could not speak to her. Her questions—was he ill, had he had news—received only silence for answer. But Fritzie was a determined woman. She loved Kiffie



Fritzie ran into his room, her arms outstretched in love and joy. —It's all perfectly plain, Carol and Madison must have offered him more money to ride Moon Ray and he had to get you in any way he could, to break the contract. What a gag!—me go to Europe with Duke! Oh, my Gawd."
"Sl, make a leap for the telephone. "Duke! I've got to tell him!" (To Be Continued)

Residential Property For Sale By Auction

On Tuesday the 20th day of July at 12 o'clock noon.
This property is situated opposite Prince of Wales College being Number 286 Grafton Street in Charlottetown, and is a most suitable place for boarding students attending college.
It contains 4 rooms and kitchen on first floor, 4 rooms and bath on second floor and three rooms and furnace in good basement and new furnace in cellar. Hot water heated premises in first class condition.
JOHNSTON & JOHNSTON, Solicitors, Charlottetown.
J. P. BRADLEY, Auctioneer. L-218-7-10-51.

Real Estate Agency H. K. S. HEMMING

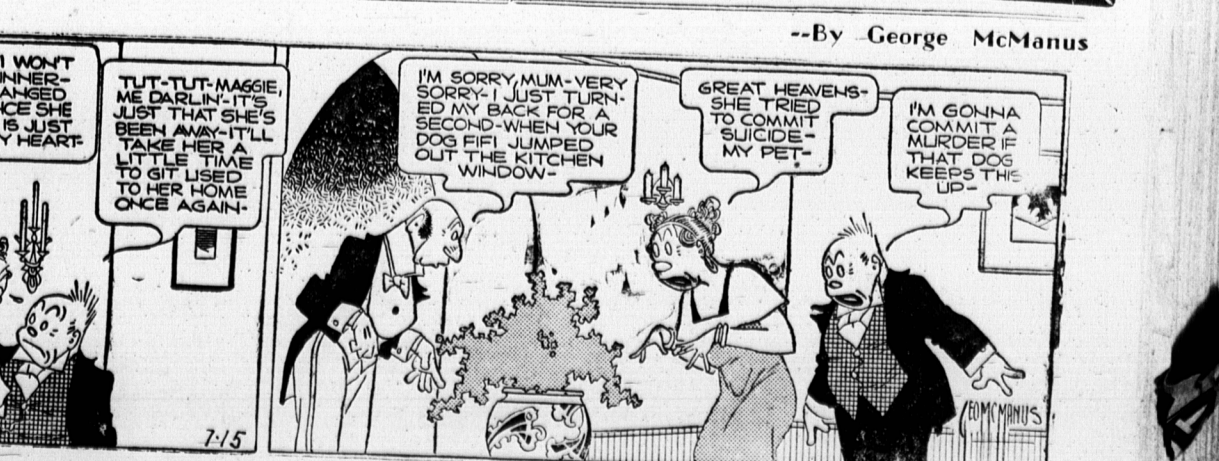
Offering to the Public a service in all branches of Real Estate as Agent and Manager.
To BUY, SELL, RENT Properties in City and Country. To give valuations, arrange Mortgage Loans, Secure Tenants, Collect Rentals and Manage Properties and Estates.
NO CHARGE UNLESS DEAL EFFECTED
Owners of Land or Buildings are Asked to List Their Properties
Persons Desiring to BUY or RENT City Houses or Vacant Lots or Farms are Invited to Call
88 GREAT GEORGE ST.
Charlottetown

DISSOLUTION OF PARTNERSHIP

CANADA PROVINCE OF PRINCE EDWARD ISLAND COUNTY OF PRINCE
We, the undersigned, John W. Warren and George A. Webster, both of Kensington in Prince County in the Province of Prince Edward Island, do hereby CERTIFY that the partnership lately formed between us carrying on the trade or business of conducting a saw and door factory, and in dealing in rough and finished lumber and coal under the firm name of John W. Warren and Company, in the Town of Kensington aforesaid, has been dissolved by mutual consent.

BRINGING UP FATHER

"FIFI! WON'T YOU PLEASE EAT YOUR DINNER? YOU HAVEN'T EATEN A BITE ALL DAY! ARE YOU LITTLE DARLING? LOOK! IT'S ALL BREAST-OF-CHICKEN JUST FOR YOU!"
"OH-DEAR-FIFI! WON'T EAT HER DINNER—SHE HAS CHANGED HER MIND! SHE'S SO MUCH SINCERER! IS BACK-IT IS JUST BREAKING MY HEART!"
"TUT-TUT-MAGGIE, ME DARLIN! IT'S JUST THAT SHE'S BEEN AWAY—IT'LL TAKE HER A LITTLE TIME TO GET USED TO HER HOME ONCE AGAIN."



A solicitor with a long, pointed nose was engaged in a heated discussion with a lady client. If you do not settle immediately, I shall file a bill against you," he said. There will be no need for you to file your bill, replied the lady, it's clear enough already.