

SMALLMAN'S September Presentation—

"THE PICK OF FALL GARMENTS"

Featuring...

Persian Type, Curl Cloth Coats

in black and grey. Box style with full flowing back, full sleeves with turn back cuffs. These curl cloth coats present a smart appearance in their double-breasted, two button style. Chamais lined and collarless, with built up neck line that opens up into graceful V line—fully as warm, long wearing and comfortable as any fur coat.



Suits

For Juveniles

Assorted 3 piece tweeds. Coat with shorts and longs. Two button coat in single and double breasted styles. Serviceable, smooth and dressy, these suits fill the bill for any occasion. Sizes 22 to 30.



For Boys

Three and four piece suits, in either long or shorts, or both. Assortment of browns, blues and grey tweeds. Single and double breasted two button coats. Notched and peak lapels, rayon lined, with and without flap pockets. Semi-drape shoulders. This well and modern tailored suit will fit well with each and every lad.

For Students

Assorted tweeds and worsteds in checks and herringbone weave; assortment of blues and browns. Semi-draped shoulder, full lined sleeves, coat and vest. Single and double breasted two button style in two, three and four piece suits. Outstanding patterns in sizes 22 to 32.

Street Floor
Main Store Section

Millinery

Fall felts in the spirited tempo of the season. Your favorite tams, ribbon-feather and metallic trims, roll brims, sailers, helmets and off-the-face styles, with and without the new eye-length veils. Brimful of loveliness, these smartly tailored lines have both that personal and feminine touch.



There is nothing as youthfully flattering as an off-the-face style; that's where campus and play toppers take the form of head fitting, with the up-roll all around.

Ask about our
• Budget Plan
• Layaway Plan

Dresses

One of Smallman's aims is to build extra value - - - more and more solid good worth - - - into budget priced garments—to match price with quality. We have done this in our dress line—presenting you with bunny wool, wool jerseys, angora and fine wool crepe, tending to give you the raglan or drop shoulder with emphasis on full hips. The sizes are 11 to 17 and 12 to 20 in blues, greys, rose, cream, tan—in fact—all the popular fall shades.



Ladies' Ready-to-Wear
Main Store Section
Upper Floor

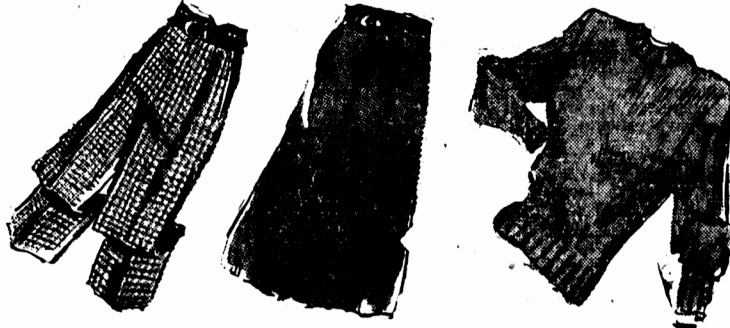


Coats

Sport coats in tweeds, fleeces, doventeen, camel hair and wool present a striking appeal in styles of today. Single and double breasted, collarless, lined and unlined—these coats are all of English cloth. Roomy, with and without raglan shoulders, having slit pockets. In close and trimline sizes with some fitted just enough to flatter your figure.

Warm, durable and comfy, these garments are in full sizes for every style. Misses sizes 10 to 20, and women's and half sizes from 16 1-2 to 24 1-2, 40 1-2 to 48 1-2. Shades and predominant colors of every description to choose from.

The less conservative coat for juniors, in English tweeds, doventeen, fleece, camel hair and wool. Collarless, lined and unlined, single and double breasted styles. Raglan and well-gored for fit with deep armholes. Also the snug form fitting type. Comfortable and warm. In full sizes 11 to 17.



Slacks

Slacks in tweeds, wool tweed, shetland wool, corduroy and alpine—slash pockets with fold stitched seams. Zipper with two buttons, and belted fronts. Color combinations galore to choose from—grey and green, grey and red, grey and blue, checks in beige and browns, wine, blue, gold, rose, navy, black, brown—in fact—a complete line of fall colors in a size for every figure.

Skirts

Skirts in plaids, checks, stripes, solid shades and colors in woven wool and alpine—colorful for fall wear with emphasis on slenderizing the waist line and filling the hips. In plain, gored, pleated all around, and 3 pleat front and back styles. Sizes 12 to 20, 22 to 44 in blacks and browns only.

Sweaters

Your favorite sweaters by Jantzen, Regent, Avon, and other famous makers. In cardigan and pullover styles with crew and V-neck. Soft and lovely yarns—yet durable and strong. Smart pullovers that can be worn alone or with any cardigan. These all wool sweaters are the most colorful we have had for some time—all shades—all sizes.

SMALLMAN'S LIMITED SUMMERSIDE

Where Price is Matched With Quality

WESTERN GUARDIAN

—SHEET LEAD and sheet zinc. Available at The Summerside Hardware Co.

—FOR SALE—400 stooks mixed grain. Harry Sudbury, Spring Valley.

—WANTED office or cash boy. Apply Bruce McKay Co., Ltd., Summerside.

—FOR SALE—Two driving wagons, cheap. One new truck wagon box. Rex Dawson, Albany.

—WANTED—Bowling Alley attendant. Apply Capitol Bowling Alleys, Summerside, stating wages required.

—THE CONSERVATIVE COMMITTEE meeting will be held at Daniel Noonan's, Bedouque, Thursday evening. Candidates present. Those interested are cordially invited.

—THE CONSERVATIVE COMMITTEE meeting will be held at Daniel Noonan's, Bedouque, Thursday evening. Candidates present. Those interested are cordially invited.

—NEW APPOINTMENTS—Mr. and Mrs. Roy Ahern have arrived in Summerside from Dalhousie, N. B. Mr. Ahern has been transferred to Summerside as manager of the Steadman Store here. He succeeds Mr. Robert Catly who has accepted the appointment of Sales and Personnel Manager of Smallman's Ltd.—S.

—WE ARE PREPARED TO SERVE YOU—We have in stock paints and enamels in white and colors; floor enamels, shellac, varnish, sanicote wall finish, etc. If the shade of paint you want is not available we can mix any shade desired. If you need painters to do your work our men can qualify; no job too big or too small. We also specialize in furniture refinishing. Frank's Paint Shop, 175 Hanover Street, Summerside. Phone 144-1.

—AUXILIARY MEETING—Trinity Evening Auxiliary met in Epworth Hall, Summerside, on Tuesday, Sept. 2nd with the president, Mrs. William Roach in the chair. The theme for the year is The Bible for all the World and the study book, Great is the Company, was introduced. The spread of the Bible was traced from its source at Rome into England, Bohemia and Germany. During the business meeting which followed one new member was added to the roll and reports were received from various committees.—S.

PARAMOUNT COMEDY LAUGH-FILLED RIOT

—Easy to laugh at, easy to enjoy is Paramount's "Easy Come, Easy Go," a riotous comedy-romance which opened yesterday at the Capitol Theatre with Barry Fitzgerald, Diana Lynn and Sonny Tufts sharing top billing. For Barry Fitzgerald, scene-stealer par excellence, it is a field day for laughs in this, his most extensive role to date. He is even funnier and more lovable than he was in "Going My Way," and that's going a long way. And he does it as a character that only the skillful and puckish Fitzgerald could make engaging—a scheming, shiftless scoundrel with a weakness for horses and a wariness of hard work. He lies, he's lazy and he breaks his daughter's heart, but is charming and lovable with it all.

Diana Lynn, who grows lovelier in each succeeding film, is Barry's troubled daughter and manager of their boarding house. It is her impending marriage to Sonny Tufts that Barry, in order to maintain his shiftless life, tries to dilapidate and howlingly to prevent. Tufts plays a returned Seabee, a human hero with human shortcomings, and he plays men to perfection. He makes an excellent foil for the conniving Fitzgerald, losing his entire bankroll on Barry's slow-travelling nags, and causing Diana to walk out on both of them. It is only after many hilarious moments that all are reconciled.

Property For Sale

Desirable 8-room house and lot for sale.

Modern Conventionees
342 Upper Central Street
Summerside
NORMAN JOHNSTON

REGENT THEATRE SUMMERSIDE

FRIDAY AND SATURDAY



Also News Shows 7:15 and 9:15 Matinee Friday 2:30

LAST SHOWING TONIGHT

"BEWARE OF PITY"

PRIVATE SALE

MANSE CARLETON

Dining room suite, kitchen stove (oil burner), piano, kitchen furniture, bedroom suite, library table, writing desk, floor lamps, curtains, cutlery, dishes, enamelware, books, pictures, cake and kindling, etc. Also 1941 Dodge Coupe in good condition.

J. H. BISHOP

FARM FOR SALE

130 acre farm for sale; 100 acres clear and in a high state of cultivation; balance hardwood. Situated one half mile from Coleman Station. Large 10-roomed house; also 2 large barns and other outbuildings.

WILMOT G. READ
Coleman

INSURANCE ALL LINES
RALPH MUTTART
Summerside

PROFESSIONAL CARD

T. Earle Hickey

Office at
15 Granville Street
Summerside
Phone 818
Chartered Accountant

Phone 511
X-Ray
DR. VINCENT GRANT
Dental Surgeon
Smallman Building
SUMMERSIDE

Arsenault & Gallan

"Electrical Contractors"
We Specialize In
HOUSE WIRING
Phone 768-2
SUMMERSIDE

Try Our
"IDEAL" BRAND
DAIRY PRODUCTS
EVERY ONE HEALTHFUL AND DELICIOUS
• MILK • BUTTER • CHOCOLATE MILK
• CREAM • CULTURED BUTTERMILK
Phone 373 for Delivery
IDEAL DAIRY
Summerside