

ENTERPRISE WINS ELECTION

VOTE IS 5 TO 1 FOR ENTERPRISE'S POPULARITY, BETTER BAKING and ECONOMY

ROUND TRIP BARGAIN FARES

—TO—

\$ 9.00 Quebec

10.60 Three Rivers

10.00 Montreal

12.25 Ottawa

15.00 Toronto

From All Stations on Prince Edward Island

Children of Five and under Twelve years of age HALF FARE.

FRIDAY, OCTOBER 18, 1935

Return Limit: Tuesday, October 22, 1935

Except Toronto Wednesday, October 23, 1935.

Tickets Good in DAY COACHES ONLY

No Baggage Checked

For Further Information Consult Any Ticket Agent

Canadian National Railways

Use Canadian National Telegraphs

LONDON SUBWAY SYSTEMS EXTEND STREAMLINING OF UNDERGROUND TRAINS

The "tube" system in London is going in for streamlining of their underground trains on a more pronounced scale. Twenty-nine interiors have been ordered, according to the Industrial Department of the Canadian National Railway.

Professional Cards

McLEOD & BENTLEY
W. E. BENTLEY, K. C.
J. A. BENTLEY, K. C.
Barristers and Attorneys-at-Law
MONEY TO LOAN
Office: 150 Richmond Street.

J. A. MacDonald, K.C.
BARRISTER, SOLICITOR, &c.
Eiley Building
Charlottetown, P. E. Island.
Money to Loan and Collections given the very best attention.
\$75-2-6-1month.

A. J. HASLAM, B.A., LL.B.
BARRISTER, SOLICITOR, ETC.
MONEY TO LOAN.
New Brace Building

MacGuigan & Trainor
Mark R. MacGuigan, K. C. & C. St. Clair Trainor, B. A.
Barristers, Solicitors, etc.
MONEY TO LOAN
Office: Over Provincial Bank, Richmond Street, Charlottetown.

H. F. MacPHEE, B.A.
NOTARY, &c.
BARRISTER, SOLICITOR
Eiley Building, Charlottetown

BELL & MATHIESON
B. B. Bell D. L. Mathieson, LL.B.
Barristers & Solicitors
Money to Loan
Cameron Block, Charlottetown, P.E.I.

Liverpool Cathedral Bells To Be In Circle

(London Observer) Work on the cathedral at Liverpool has at last reached a stage when preparations have to be made for the installation of a peal of bells in the central tower.

It is intended to erect a huge steel framework, extending from one side of the tower to the other, thirty feet in height, in which the bells will be hung in a circle—an unusual procedure, possible only in a tower of this size.

Enormous Strain

The enormous strain involved in the installation of the bells has caused Sir Giles Scott, the architect of the cathedral, to make very special provision to meet it. He has planned that this great framework shall rest on a girde of concrete, just over 8 ft. high and 8 ft. wide, in which 32 tons of steel bars and 600 tons of concrete will be used. On this foundation there will be four diagonal girders, which in turn will support the framework in which the bells will be hung. These measures arouse the interesting question of how much force a peal of bells exerts on a tower when it is being rung. The unbalanced swinging mass of metal, whose force is constantly changing both in its direction and its quantity, must clearly subject a tower to a very considerable amount of oscillation.

It has been computed, for instance that a peal of eight bells, with a total weight of three tons, can exert a maximum horizontal thrust of eight or nine tons on a tower.

It has been the practice for over three centuries to design bell-frames so that, as far as is possible, half the weight swings east and

west and the rest north and south. In many cases this has been satisfactory, and in some the reverse. There have been cases where it has been advisable to swing all the bells in one direction.

Until about forty years ago all bellframes were "loose" or "float-in," i. e., the foundation members did not really form a part of the tower fabric. These foundation members either took their bearing loosely on corbels or on an offset in the walls or were built loosely into the walls. They were not, however, tied to the walls.

To-day the foundation members of a bell-frame are arranged to take a bearing in all four walls, whereas in old days they were generally only carried on two walls. Further, these foundation members are tied into the walls and the whole founder acts as a grille tying the four walls together. This is the fundamental difference between bell-frame construction to-day and of over forty years ago.

Floating Frame

A loose or floating frame causes much more horizontal force to be exerted on a tower than one which is made an integral part of the tower.

Another important development has been made, viz. in the positions in which the bell ropes fall from the wheels. As far as possible bells swinging in one plane should rope down on the same sides of the wheels. For example take two bells swinging north and south, then both ropes should fall either on the north side or on the south side of the wheel, and not one on the north and the other on the south.

ST. ELEANORS HIGH SCHOOL

Honor Roll for August and September:—

Grade X—1. Hazel Barrett; 2. Ruth Holland; 3. Patricia Weeks.

Grade IX—1. Marion Tanton; 2. Rowena Lockhart.

Grade VIII—1. Ruth Rhodes.

Grade VII—1. Keith Bernard; 2. Janet Hunt; 3. Eita Perry.

Grade VI—1. Hope Green.

Grade V—1. Margaret Hunt; 2. Lena Mills; 3. Auisin Holland.

Grade IV—1. Nina Wedge; 2. Kenneth Andrews; 3. Albinus Gallant.

Grade III—a. 1. Charles Tanton; 2. Albert Phillips; 3. Janie Gallant.

Grade III b. 1. Patricia MacDougall; 2. Marion Green.

Grade II. 1. Albert Mills; 2. Margaret Marten; 3. Norma Rhodes.

Grade I a. 1. Blanche Murray; 2. Stanley Green.

Grade I b. 1. Hilda MacDougall; 2. Mary Phillips; 3. Lawrence MacDougall.

Perfect Attendance:— Ruth Holland; Marion Tanton; Lena Mills; Mary Crosby; Nina Wedge; Janie Gallant; Charlets Tanton, Albert Mills.

Earle S. Jelley (Principal), F. Dorothy MacMurdo, (Assistant).

No Goat in Rocky Mountain Species

A Rocky Mountain goat is really not a goat at all but is more nearly an antelope or a species of animal between the antelope and the goat, states H. S. McClung in an article in the October issue of the Canadian National Railways magazine, describing his experience in Jasper National Park, Canada's largest national playground, under the caption "Bears, Deer and Billy Goats." They are very shy and secretive, the writer declares, but are quite fearless of anything that walks on two or four legs, their apparent timidity he puts down to chronic grumpiness and bad temper. The mountain goat, he goes on to remark, has "pugnacity, speed, strength and stamina, and his horns are as sharp as a Corsican's stiletto. Put these stilettes on the front of three hundred pounds of irascible mountain billy goat and it is best to make his acquaintance through a pair of strong binoculars." The mountain goat along with Big Horn sheep are hunted by sportsmen on the outskirts of Jasper Park which is a game sanctuary and, therefore, hunting is not permitted within the confines of the park.

Egg Laying Contest

Weekly Report of the Prince Edward Island Egg Laying Contest for the week ending October 9, 1935.

Pen	Breed	Eggs	Points
1.	Experimental Station	2003.3	
2.	Mrs. Roland Easter		1899.2
3.	Mrs. J. H. McPhail		1842.8
4.	S. R. Pendleton		1772.7
5.	Mrs. J. D. McFarlane		1870.3
6.	Wm. R. Brown, Wood Islands		2262.6
7.	Experimental Station		1718.3

Weekly Production 30%
High Hens to Date

Pen	Hens	Eggs	Points
1.	2	256	294.5
2.	7	235	274
4.	3	263	289.5
6.	5	258	255.3

F. A. Driscoll Manager of Contest, J. A. Clark, Superintendent.

Ability To See Comfortably

The object of a modern eye service is to enable patients to see comfortably. That means seeing without strain on the eyes. And also the avoidance of many bodily results of eye strain. That thought deserves the consideration of all who are not certain of the condition of their eyes.

G. F. Hutcheson

DOMINION COKE

Prepared by-product Coke represents an advancement in fuel for home heating.

Users of Dominion Coke know that tending a fire in the furnace is a clean and easy operation. Rest of all, you have solid heat comfort.

Ask the man who uses Coke.

Sold by A. Pickard & Co.
W. D. Gillis & Co. and
C. Lyon & Co.

Buntain, Bell & Co., Distributors for Prince Edward Island

Feeding System For Early Lambs

WINTER DAIRY FARMERS HAVE AN ADVANTAGE

In view of the fact that a proper system of feeding is the principal essential of the successful raising of early lambs, particularly those for the market in the latter part of June and early July, farmers who understand the basic principles of winter dairying will usually make a success of raising early lambs. A feeding ration that will produce abundance of milk results in the production of early lambs that grow rapidly and finish for the market at an early age. Alfalfa or clover hay are essential as they are protein roughages. Corn silage, mangels or sugar beets are also valuable succulent feeds and besides keeping the ewe healthy they stimulate the milk flow. Ewes with lambs at foot also require a liberal grain allowance usually not less than a pound daily and ewes with twin lambs often taking up to two pounds daily. Oats are a safe feed for milking ewes, and as this grain is most common on all farms it is generally recommended for ewes in milk.

A ewe flock raising early lambs under a system of feeding as suggested above will bring their lambs forward to the spring grass without set back. As a rule, lambs at the time the ewes are turned to grass will have learned to eat both grass and roughage, and if the pasture field is accessible to the barn, it is advisable to make a creep for the lambs so that they can be fed grain while on the pasture. Grain feeding on pasture increases the rate of growth and development and makes it possible to market at an earlier date. As a rule June lambs are worth more by the pound than July lambs and July lambs are worth more than August lambs. So that a few bushels of grain fed to early lambs is invariably marketed as finished lamb well above current market prices.

Maple Leaf Contest Enters Third Year

OTTAWA, Ont. 12.—Exclusively and uniquely Canadian, but world-wide in its pleasure-giving possibilities, the third annual competition for the most beautiful autumn tinted leaf is announced by the Canadian government through the Canadian Travel Bureau, in cooperation with the Canadian National Railways and the Canadian Pacific Railway.

Doubled prize money, and a distinct liberalization of the rules, permitting visitors to Canada to enter maple leaves, are the major innovations marking the 1935 competition.

The prize list for the 1935 competition provides for an award of \$100.00 to the person sending in the most beautiful leaf, and in addition provides a second prize of \$40.00, and a third prize of \$20.00. The competition this year will continue the largest leaf phase and the person sending in the leaf with the largest area will be awarded a prize of \$30.00; and the second largest, a prize of \$10.00.

This year's competition is open to all Canadians, and to visitors to Canada, but the entries must be gathered and sent in from a Canadian point.

Each leaf must be mounted on a separate card with a gummed paper over the stalk only. They must be packed flat between two pieces of stiff cardboard accompanied by a sheet of paper 5x7 inches on which must be written the name and address of the sender and the date and place of gathering. The name of the contestant must not be written on the card on which the leaf is mounted. No entry is to contain more than three leaves, though one person can forward as many entries as desired. Damaged or broken leaves will not be eligible; no entry will be returned and the judges will not enter into correspondence with any contestant. Employees of the Canadian National Railways, the Canadian Pacific Railway, and the Canadian Travel Bureau and not eligible for this competition, but members of their families may submit entries.

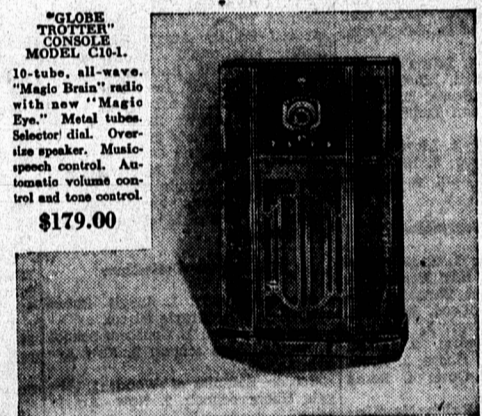
All entries must be forwarded express prepaid or postpaid, to Canada's Maple Leaf Contest, P.O. Box 1500, Montreal, Quebec. The contest closes on November 1st, and entries express waybilled or postmarked later than that date will not be eligible.

New, Exclusive Features — a real Advance in Radios The 1936 RCA Victor "Globe Trotter" with Magic Eye Magic Brain and METAL TUBES



"GLOBE TROTTER" CONSOLE MODEL C14-1. 14-tube, all-wave, "Magic Brain" radio with new "Magic Eye." Metal tubes. Selector dial. Over-size speaker. Music-speech control. Automatic volume control and tone control.

\$275.00



"GLOBE TROTTER" CONSOLE MODEL C10-1. 10-tube, all-wave, "Magic Brain" radio with new "Magic Eye." Metal tubes. Selector dial. Over-size speaker. Music-speech control. Automatic volume control and tone control.

\$179.00



RCA Victor

RCA VICTOR COMPANY LIMITED, MONTREAL

For better all-round performance use the RCA Victor Globe Trotter Antenna

British Columbia Spars for King's New Yacht

VICTORIA, B. C., Oct. 14.—Two splendid examples of British Columbia's finest timber were loaded from the Canadian National Railways docks here over the weekend on the deep sea freighter S. S. "New Westminster City" in the form of two spars which will be used as masts for His Majesty's new yacht which will replace the famed old "Britannia." Three flat cars especially rigged for the job brought them down by railway from Cowichan Lake in the inland interior for shipment to England. One is 106 feet long with a 20 inch top, the other 96 feet long with a 22 inch top, weighing about seven tons each. It took two months to fill the order and eight huge trees

were felled before the exacting requirements could be met. Both sticks are heart centred at each end. Together with the two masts went two booms for the yacht; they were almost as long as the masts. Apart from these spars His Majesty already has a fine piece of British Columbia timber in his possession it is the flag pole at Windsor Castle.

NEW ZEALAND GETS OVER HALF CANNED FISH FROM CANADA

New Zealand is buying from Canada increased quantities of motor vehicles, tires, newsprint, canned fish, silk and artificial silk piece-goods, flour, gum boots, iron wire, leather footwear, agricultural machinery, cardboard and similar board and adding machines, a comparison of figures for the first six months of this year as compared with the same period of 1934 shows, according to traffic officials of the

Canadian National Steamships, a great portion of the products enumerated being carried in vessels of the line in the direct Canada-Australia-New Zealand service. Canadian canned fish represented 52.1 per cent of the total imports. More Canadian radio receiving sets and electric stoves were also sold.

Italy will Try Making Cellulose

The Italians are laying plans to go into the manufacture of cellulose in which they propose to use Libyan esparto grass and straw and hemp stalks of which large quantities are available in Southern Italy. It is proposed to establish an experimental plant with this end in view. Italy is a heavy importer of cellulose, Canada, among other countries, being a source of supply, according to the Industrial Department of the Canadian National Railways. Imports from Canada are of a special type and it is not felt that any domestic production will affect this trade.

WAKE UP YOUR LIVER BILE—

Without Calumel—And You'll Jump Out of Bed in the Morning!

The liver should pour out two pounds of bile into your bowels daily. If this bile is not flowing freely, your food doesn't digest. It just decays in the bowels. Gas builds up your stomach. You get constipated. Your work system is poisoned and you feel weak and the world looks drab.

Calumel is only makeshift. A mass takes these good, old Carter's Little Liver Pills to get these two pounds of bile flowing freely and make you infinitely happy. Buy a box, see the yet amazing in making bile flow freely. Ask for Carter's Little Liver Pills by name. Stubbornly refuse anything else.

—BY GEORGE MCMANUS

BRINGING UP FATHER



MR. OWEN LOTT I WANT YOU TO HEAR MY VOICE—I CAN SING AS WELL AS ACT—

I CAN IMAGINE THAT—

IF I WEAR MY NEW JERSEY—WHAT WILL DELLA WARE?

I KNOW SHE CAN'T ACT, BUT HER SINGING IS WORSE—

OH—BARDON US—WE THOUGH SOMEONE WAS BEING MURDERED—