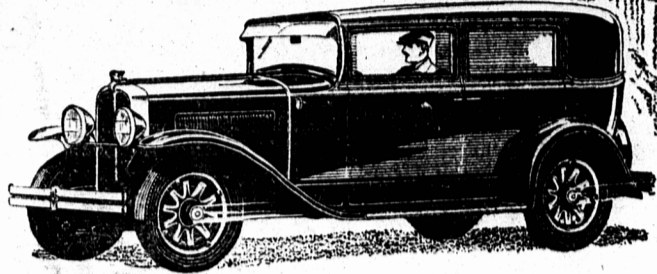


**Longer Life
Greater Economy
due to moderate engine speed**



HOURS of steady high-speed driving are no hardship for the Pontiac Big Six. For its big 60-horsepower engine develops maximum power and road speed at extremely moderate engine speed.

The result is, of course, less wear on moving parts at all times . . . longer life for the engine . . . and less expense per mile of driving. And this is only one reason why the Pontiac Big Six is so unusually long-lived and economical.

New-type rubber mountings, which insulate the engine from the frame, cushion it also against road shocks. The crankshaft has a harmonic balancer to counteract torsional vibration. Crankcase ventilation prevents water vapour from diluting the engine oil. And, as an added factor of economy, the strongly-built wood-and-steel bodies by Fisher, preserve their beauty for years, and thus result in larger trade-in values.

There is much more to learn about the Pontiac Big Six. See it. Drive this "finer car with a famous name." Then, if you wish, use the G.M.A.C. deferred payment plan . . . designed by General Motors for your convenience.



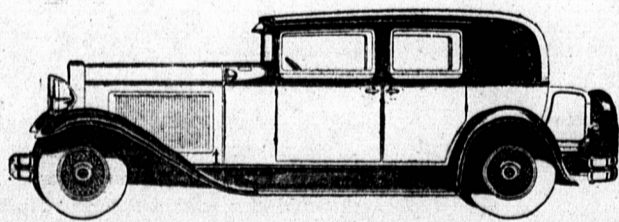
PONTIAC BIG SIX

PRODUCT OF GENERAL MOTORS OF CANADA, LIMITED

A Horne & Co. | Prince Motors
CHARLOTTETOWN | SUMMERSIDE
DEALERS for PRINCE EDWARD ISLAND

IT'S BETTER BECAUSE IT'S CANADIAN

Invest in Dependability



A distinguishing feature of the Nash "400" is its dependability.

Nash engineers and Nash craftsmen have designed and built the car for permanence and long life. Only the finest of materials that money can buy are deemed good enough for Nash.

And Nash precision standards of manufacture are most exacting.

That is why the Nash "400" is such a sound investment. That is why it repays its purchase price more richly in finer performance, in greater comfort, and in longer dependability.

Nash quality standards of engineering and manufacturing are identical throughout the complete range of Twin-Ignition Eights, Twin-Ignition Sixes, and Single Sixes.

Read These Nash "400" Features

Centralized chassis lubrication, built-in, automatic radiator shutters, and the world's easiest steering in every model. Adjustable front seats. Steel spring covers with lifetime spring lubrication in the Twin-Ignition Eight and Twin-Ignition Six lines. The priceless protection at no extra cost of Duplate, non-shatterable plate glass in all doors, windows, and windshields throughout the Twin-Ignition Eight line. This glass is also available at slight extra cost in all other Nash cars.

NASH "400"

Nash Motor Sales Co.
Charlottetown,

O'Leary and Vicinity

The personal friends, as well as the patients of Dr. Kennedy regret his decision to remove to Alberton in the immediate future. While it is true that a large territory is served by the O'Leary doctors, it is an undeniable fact that the need of more medical skill in the extreme west of the province is even greater than ours. Our regret at his departure is coupled with the best wishes for success in his new location where he will have ample scope for the exercise of his talents as a general practitioner.

The condition of Mr. John Noonan, who as already reported in these columns was severely injured by falling down the basement stairs in the store of Kennedy & Kennedy where he was employed, is now reported to be slightly improved although not yet out of danger.

Mrs. Percy Crossman of Springfield West was a visitor to Knutsford where she was the guest of Mrs. Avarad Harris.

Mr. Erskine Silliker, Knutsford was a visitor to Summerside on Friday.

The Ladies Aid of the Baptist Church met recently at the home of Mrs. L. Stetson. The leader for the day was Mrs. Thomas Smallman and the programme included a duet, "On Calvary's Brow," beautifully rendered by Mrs. Watson Silliker and Mrs. Avarad Harris. The envelope offerings were collected and a satisfactory sum realized. A dainty repast was then served by Mrs. Stetson. The next meeting is to be held at the home of Mrs. Watson Silliker.

The largest individual litter of foxes thus far reported in this vicinity is owned by Mr. W. E. Turner and consists of seven thrifty looking young ones now over three weeks old. Besides this exceptionally large litter there were in Mr. Turner's ranch three litters of five each making a total of twenty-two foxes, eighteen of which are living, from four pairs of breeders.

Miss Dorothy Sheen, formerly of O'Leary and now of Summerside is now spending a few days with her old friends in this vicinity.

Union Prayer-meetings are being held each week in the United Church.

Mr. Isaac Harris of Knutsford is now reported to be improving in health. His many friends wish him a complete recovery.

Mrs. Herbert G. West, Devon is spending a few days in O'Leary the guest of her daughter, Mrs. Shelton.

Her friends are pleased to learn that Mrs. Robert Carruthers who has been ill for some time is now improving in health.

Pates have recently re-decorated and re-stocked their store which it will be remembered was badly affected by the fire which destroyed the nearby store owned by Turner & Co. The interior of the ice-cream parlor has been refitted and redecorated in readiness for the coming season.

The funeral of the late Joseph McNeill of West Cape was held on Tuesday the 15th inst. interment being made in the Presbyterian Cemetery at West Point. An extended obituary will appear later in these columns.

Young school girls are receiving instruction in beauty culture, including manicure and makeup, from complexion specialists of the fashionable West End of London.

Every child in an elementary school in England now costs the nation an average of \$82.60 a year, the expenditures varying from \$82.83 in London, to \$42.50 in Whitehaven.

To meet new circumstances arising from further inventions and developments a bill to regulate radio broadcasting will be introduced in the Canadian Parliament.

The Houses of Parliament and all other royal palaces of England have placed under the jurisdiction of the special coroner attached to the Royal Household.

Described as the world's costliest book, a Gutenberg Bible printed on vellum, and estimated to be worth more than \$250,000, may be offered for sale in London very soon.

Attempts are being made to identify the bodies of eight British soldiers recently discovered at Hill 119, near Souchez, the northern extremity of Vimy Ridge.

Motion pictures specially suitable for young children are to be presented at early-evening shows in principal cities of Australia, the plan having been suggested by Sir Charles Ferguson.

Eclipse Of The Sun

An eclipse of the sun will take place on April 28th. On a line commencing a little south of San Francisco, through Boise City, Idaho and Helena, Montana, and thence into Canada, crossing the foot of Hudson's Bay and the north of Labrador, the eclipse will be central, and annular. All places to the north or south of this path will see it as a partial eclipse. On a very short sector of the beginning of this line, the sun's disc will be wholly obscured, and the eclipse will be total. The period occupied by the moon's shadow to traverse the entire path will be from 11 hours, 20 minutes a. m., to 3 hours, 26.9 minutes p. m.

It may here be explained that by "central" it is indicated that the centre of the sun's disc and that of the moon will coincide, and this is one of the necessary conditions of a total eclipse. When, however, the moon, by reason of its varying distance, is a little further from the earth, it does not entirely cover the sun's disc even though central; it allows a ring of sunlight to shine past it, as it were; and so the eclipse is annular, from the Latin "annulus," a ring.

The further any point on this continent lies from the path of the eclipse, the less will it observe of the obscuration of the sun's disc. Denver City, Colorado, for example, will see about three-quarters of that luminous in shadow, while in New York (although nearly in the same latitude), only about one-half will be obscured. This is due to the north-easterly trend of the eclipse.

From our relative position, we may expect the phenomenon to be of a more striking character than it will appear to be in New York, but in any case, it will not be as spectacular as that of January 24, 1925, when the sun looked like the newest of "new moons" and the general effect was that of twilight.

Paris has a jeweled-shoe fad. China may have talkies in Chinese.

ESTABLISHED in public favor

Today, De Soto's front-rank position in the field of low-priced sixes is firmly established. It is plain that no car of commonplace ability could win so high a place in public favor as De Soto Six has won in so short a time. The qualities that built this quick and lasting success were and are exceptional. Success on a scale enjoyed by De Soto Six never comes by chance. It is earned by merit alone—by offering at a low price a better kind of quality, a smarter type of design, a richer array of appointments and a greater ability to perform. To De Soto owners, it is not surprising that the discriminating driver who gives the De Soto Six a thorough trial usually becomes eager to possess it.



Companion Car to the De Soto Straight Eight

\$1075
AND UP, AT THE FACTORY

WITH THESE FEATURES
Chrysler-designed, high-compression engine, using easy grade gasoline.
Iso-therm ventilated bridge-type pistons, with piston rings of tongue and groove construction.
Internal-expanding four-wheel hydraulic brakes with squeakless, moulded brake lining.
Riding comfort insured by long, resilient springs and hydraulic shock absorbers, front and rear.
Full-pressure lubrication—rubber insulation of engine—counterweighted crankshaft—camshaft driven by silent chain—thermostatic heat control—chromium-plated lamps—semi-automatic spark control—manifold heat control—fuel filter—air cleaner.
CHRYSLER MOTORS PRODUCT

CANADIAN-BUILT FOR CANADIANS

Bruce Stewart & Co., Ltd
58-62 Fitzroy Street, Charlottetown, P. E. I.

Five Body Styles, \$735 to \$775. All prices f.o.b. factory including standard factory equipment (freight and taxes extra.)
PLYMOUTH
\$735
And up, f.o.b. factory

PIERFORMANCE!

WHEN first presented, the new Durant 6-14 was conceded to possess the modern qualification . . . APPEARANCE. A demonstration immediately disclosed a second equally important qualification, namely, COMFORT.

By actual road test, the Canadian public is discovering that PERFORMANCE ranks with Appearance and Comfort and that these three modern qualifications are combined to create a new era in motoring and a new standard of automobile VALUE.

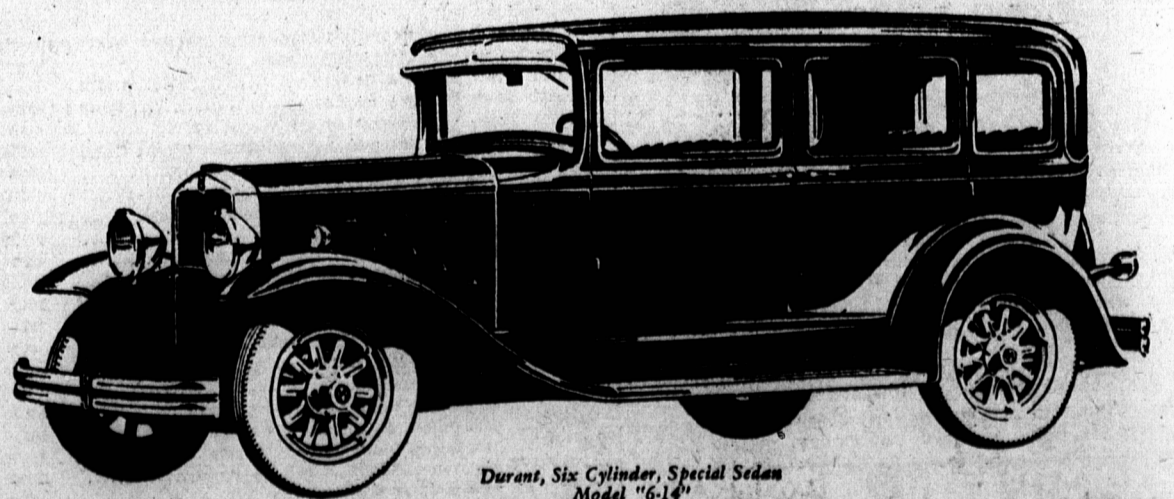
Your opportunity to prove the merits of the 6-14 to your own personal satisfaction, awaits you at your nearest Durant dealer's . . . now.

The Durant Four continues as an important unit among Durant products

DURANT MOTORS of CANADA, LIMITED
TORONTO (LEASIDE) CANADA



APPEARANCE
PERFORMANCE
COMFORT
VALUE



Durant, Six Cylinder, Special Sedan Model "6-14"

DURANT

A G O O D C A R
T. G. IVES
219 Great George Street
Offices: Charlottetown and Montague
Distributor for Prince Edward Island
Tune in on C.F.C.Y. Sunday Evening at 9 p. m.