

IT DOESN'T MATTER

How large or how small your business is, it's not too large or too small to benefit by adopting HAZARD'S BRAHMIN TEA as the leader in all Grocery Stores. The people want it they must get it, and you should keep it to hold trade. I am determined to fight competitors on the line of quality and value. They may offer you Teas to show bigger profits, but is the quality there? Is the value there? Leave it to the public and I shall be satisfied.

HORACE HAZARD,

1411-61 Agent for Canada.

A Plant Bargain 243 Fruit Plants for \$2.75.

Will produce more fruit fresh and green canned than you and your friends can with lot to sell. The very choicest, newest and most hardy kinds at less than one third price. GRAPES, one each, Campbell's early, the new black, Concord, black, Worden, chole black, Moore's Early, fancy early black, Niagara, white, Lindley, red, the standard black. CURRIANTS, each, Red Cross, new, London Market, new, Cherry, red, Champion the standard black. RASPBERRY, either London or King the fancy new reds. STRAWBERRY, Columbian, New heavy cropping purple canner. RASPBERRY, Cumberland, new mammoth cropping blackcap. STRAWBERRY, Senator Dupont, the king of canners. STRAWBERRY, Pride of Michigan, Record for size, quality, crop. STRAWBERRY, President, the new fancy late berry. Satisfy packed and shipped when ready to plant, on receipt of \$2.75. CUT THIS ADVERTISEMENT OUT, MAY NOT APPEAR AGAIN. ORDER NOW. You can't get the same value elsewhere for double the price. Send for complete list of plants, potatoes, etc. STRAWBERRY PLANTS \$1.50 PER 100 UP.

ELDORADO POTATO

The great English potato, absolutely blight and disease proof, such an enormous cropper that it has sold since 1894 at \$7.00 for 14 lbs. \$12.00 per lb. \$2.00 for one potato, last year \$1 per doz. One potato in one year cropped 361 pounds. It means to the grower much larger crop off same soil, with some work, and no rot. Sounds incredible, but send your name to let us send you a sample of potatoes, checks paid press opinions of 31 papers etc. WE PROVE IT TO YOU. Now offered for the first time in Canada. Pure seed sold by us. PRICE 18 PER POUND. Also other kinds.

SMITH BROS.,

Box 90 Beachville Ont. Members Canadian Seed Growers' Assn.



GAYS' PLANTS.

From one end of our beautiful Island to the other our plants will be scattered, adding new beauty and pleasure to many. The Murray Harbor Railway places one of the most prosperous and independent settlements of the Island in close touch with our Gardens.

Best as the different branches of railway, the Steamers City of London and Electra add to the facilities of the transportation. When at all convenient visit our Market which is open for business every day of the week. Plants will be promptly delivered to steamers or boat. Below please find a partial list of our stock.

Perennials—Pansy and Daisy in bloom. Sweet William, Forget-me-nots, Dianthus at 40c. per doz. 4c. each. Hollyhocks 6c. each. 60c. per doz. Carnation (only a few) at 5c. each. Marguerite seedling, Carnations, 25c. per doz. Seedling Pansy 20c. per doz. Annuals a very choice variety—Aster, Phlox, Petunia, Verbena, Stocks, Mignonette, Marigold, Balsam, Everlastings, Calliopsis, Salpiglossis, Candytuft, Snap dragon, Nasturtium, Talland dwarf Crystal Palace, Compacta Lobelia, Dwarf Alyssum, Golden Feather, Canary Creeper, Morning Glory, etc. at 15c. per doz. \$1.00 per 100. Dahlias from seed 20c. per doz. G. adonis bulbs 40c. per doz. A limited quantity of named Dahlia bulb, imported from James Vick's Sons, Rochester, N. Y., at 15c. each. Mixed Dahlias from same firm at 10c. each. Nice Island grown Dahlias at 8c. each.

Vegetable Plants—Early Transplanted Cabbage, Cauliflower and Celery at 5c. per 100. Extra early tomato (will ripen most of its fruit) at 10c. per doz. Late Tomato 15c. per doz. Late Cabbage for fall and winter use (ready for planting 20 June) at 12c. per 100. Geraniums a very choice assortment the bulk of them imported from Indiana last fall from 10c to 20c. Grand for bedding or for house use.

Notice—Perennials sent by mail 1c. extra each for postage must be added and Cauliflower, Cabbage and Celery 5c. per hundred extra for postage. Tomato plants 2c. extra for postage. But annuals we send postage free. Cash must always accompany order. When at all feasible order to come by express or freight. We always give more than 100% than by mail. Notice all wintered over Perennials such as Pansy, Daisy, Carnations, Hollyhocks etc. have been about 75 per cent. winter killed and our stock of those will be limited.

J. J. GAY & SON, Ch'town,

Market Place 270, Residence 18 0.
5-9214 twif

NO BETTER TIME THAN THE PRESENT TO BUY YOUR PICTURES, ETC.

No better time than the present, to send any or all goods requiring it, to Parker's Dye Works Agency for dry cleansing or dyeing and pressing.

Making, dyeing and curling ostrich tips and feathers a specialty.

S. F. TARBUSH,

High Grade Art Parlors, Queen Street, City.

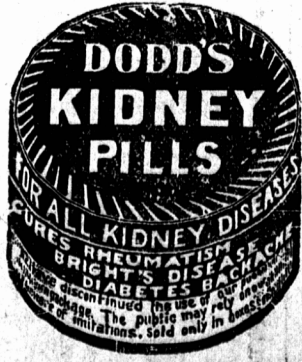
THE LONELINESS OF JESUS OF NAZARETH

Sermon by the Rev. Wm. Dobson, Pastor of the First Methodist Church, Charlottetown.

Christ's Loneliness in this World of Sin—He was Above the Comprehension of the World—But there is Always the Companionship of God.

(Reported by The Guardian Stenographer.)
Text:—Behold the hour cometh, ye, is now come that ye shall be scattered every man to his own and shall leave me alone; and yet I am not alone because the father is with me," John XVII:26.
Jesus of Nazareth was perhaps the most lonely man who ever trod this earth. You will see this more clearly if you remember that there are many kinds of loneliness, or rather, loneliness arising from different sources. I remember to have read that among the early settlers of our own North west, some advanced far beyond the bound of civilization, and through sheer lack of intercourse with society, the loneliness became so intense as to be unendurable, and they had either to induce others to go out to them, or they had to move back to civilization. We can scarcely appreciate this, who have been brought up in society such as ours. I remember once, about five years ago being out in the middle of that great lone land, with a pair of French field-glasses, on the roof of one of the C. P. R. elevators, and everywhere the awful distances exhausted the power of the glasses. I can well imagine the feeling of one being alone under such conditions. There is a loneliness as well, that comes into the soul when in a large city, where one is conscious that nobody knows him and nobody cares for him and nobody is interested in him. This is a loneliness that almost chills the blood. I stood once on the Strand in London gazing into the faces of the thousands who were passing to and fro, every face unfamiliar. I knew no one and I was certain no one knew me. At once it flashed into my mind to be in such circumstances without money would be simply awful. The feeling produced by that consciousness was akin to despair. I hastened at once to the hotel where I knew were two who were interested in me and who knew me. Then, there is a loneliness that comes into the soul from having out-lived one's generation. He knows this, who has seen one after another pass away with whom he has played in childhood, the companions of his youthful days. One by one he has buried his loved ones, and he alone is left of the generation to which he belongs. No one is interested in him, no one cares for him, perhaps housed and fed by the state. Such loneliness as this is simply pathetic. It was such a case I judge that Moore, the Irish poet, had in his mind when he sang:
"When I remember all
The friends so linked together
I've seen around me fall
Like leaves in wintry weather,
I feel like one who treads alone
Some banquet hall deserted
Whose lights are fled, whose garlands dead,
And all but he departed."
Then there is another kind of loneliness, with which you and I are not much troubled. It is the loneliness of the scholar, the man who has peered deep into the world within him, until he has seen things that are unseen by the common eye. The man who has studied the universe by which he is surrounded until he has discovered heights and depths, and seen analogies to which ordinary minds are strangers. His intellect has created a world of its own, he has no companions. What he knows and feels he must keep pent up in his own bosom; if he talk about it, he is misunderstood; nobody appreciates it, no one cares to hear it. I have more than a suspicion that it is this loneliness that has been the origin of clubs where scholars could meet together and by having something in common thus relieve the pain of loneliness.
Now it seems to me that the loneliness of Jesus of Nazareth partook of all the loneliness of which we have been speaking. He came into this world with a sinless character, and the world, a perfect lazarhouse where everything was infested with sin. The effect of this upon the life of Christ, we are not in a position to appreciate. We were born into this state, never knew any other, and are infected with the same disease, and have been breathing its putrid atmosphere from childhood. With such a state of society, the Christ could have no fellowship. He could pity it, He could weep over it, but He could have no communion with it. In this world of sin and sorrow, Jesus of Nazareth was a lone man. But He came from the bosom of the Eternal with a message to this world that God loved it and was ready to heal its diseases and cleanse its nature. And through all His life He was absolutely misunderstood. So far was His thought above ordinary humanity, so much above the comprehension of the world was the mes-

(Continued on Page Four.)



GOVERNMENT LOANS.

Under authority of the Act of 1906, the Government of Prince Edward Island is prepared to receive further loans for which Deposit Receipts will be issued. Interest from date of deposit until withdrawal. No notice of the withdrawal required. For further information apply to "The Provincial Treasurer, Charlottetown."

Wilson's FLY PADS

ONE PACKET HAS ACTUALLY KILLED A BUSH OF FLIES
Sold by all Druggists and General Stores and by mail.
TEN CENTS PER PACKET FROM ARCHDALE WILSON, HAMILTON, ONT.

"THE INVESTIGATION OF THE NORTH AMERICAN LIFE"

What a Charlottetown Gentlemen has to Say of the Company.

The following facts adduced from the evidence as given in the Montreal Daily "Star" will be assuring to our policy holders and a pointer to the intending insurer.

- 1st.—The Company do not speculate with its funds and not one dollar has been lost in this way.
- 2nd.—The Company do not hold any unauthorized securities, its investments being of the highest character.
- 3rd.—There are no overpaid officials in connection with the Company. The salaries during the early years of the Company's history were shown to be exceedingly moderate.
- 4th.—There are no excessive dividends paid to shareholders and they have not received a dollar in the way of bonuses or by other irregular means, the policy holder receiving almost every dollar of profit earned.
- 5th.—The dealings of the Company with its various policy holders were shown to be just and equitable giving to every one a full value for the premium paid.
- 6th.—That the Manager Leopold Goldman and Actuary Gilmour are men of ability and thoroughly conversant with Life Insurance, Mr. Goldman's broad grasp of the business enabling him to give many pointers to the Commissioners particularly in regard to the class of investments a Life Company could safely and profitably deal in, and also as to methods of reducing expenses.

The expert testimony given by Mr. Goldman and other Canadian Life Managers will doubtless prove of great value to the Commissioners in preparing their report to the Government and

AN ACKNOWLEDGMENT.

Messrs. Ross & Matthews, Provincial Managers, North American Life, Charlottetown.

GENTLEMEN—
Having taken out a policy for \$2000.00 with the North American Life twenty years ago on the 20 Payment Life plan with an annual premium of \$58.10, I beg to acknowledge the following options which your Company now give me at the expiration of the investment period: 1st.—Cash \$1384.00 2nd.—A paid up policy for \$2000.00 3rd.—To withdraw the profits \$476.00 and take a paid up policy for the face of the policy \$2000.00 participating in future profits, or 4thly.—To draw a life annuity of \$33.80 and carry the \$2000.00 as a paid up policy. Any of these options I consider "good value, in view of the fact that I have had the risk carried on my life for the period of 20 years, which if estimated at \$10.00 per thousand, the usual price charged by Fraternal Societies, would leave me an investment on the balance of the premiums equal to about 5% per cent.

I am a thorough believer in Life Insurance and have no hesitation in saying that the results your Company have accomplished are an evidence of skillful as well as careful management on their part.

Yours sincerely,
MARK N. WRIGHT,
Charlottetown, May 30th, 1906.
ROSS & MATTHEWS
Provincial Managers, Ch'Town.

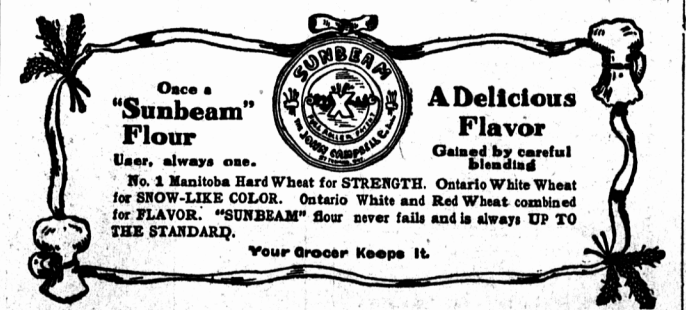
Drake's Non-Alcoholic Beverages.

NI WEST AND BEST DRINKS.

- Ginger Ale, Ye olde English Ginger Beer, Regal, Catawba, Kula, Black Rock, Peach Mellow,

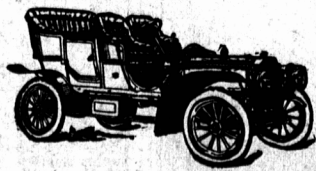
and about 20 other flavors. —ALSO— Fruit, Syrup, Classified Ciders, Lime Juice.

Trade supplied by A. P. THORNE, Box 106, Charlottetown. Write him for Price List. 5-918&twim.



Capability Accessibility Durability

Three of the Many Strong Points in Favor of the RUSSELL CAR



- CAPABLE of negotiating any hill or heavy road conditions.
 - ACCESSIBLE for adjustment or inspection, without removing body, etc.
 - DURABLE construction, due to design and material, making the car as good the second year as the first.
- Model A—12 H. P. Family Touring Car ... \$1,300
Model B—16 H. P. Touring Car ... \$1,500
Model C—24 H. P. 4-Cylinder Touring Car. \$2,500

Full Line of Automobile Accessories. WRITE FOR CATALOGUE.

Canada Cycle & Motor Co.,

(Limited) Toronto Junction. General Office and Works, Toronto Junction. Local Representative—W. K. ROGERS. 6-202&21 twm1

BRING YOUR FILMS

to us for to be developed and printed.
Gauvin, Gontzol & Co., BAYER, Proprietor.

A Friendly Tip

If you have not ordered your spring suit, let's get together. We want your trade, not only your next order, but future orders as well. Our goods will stand the test. You want our goods, perhaps you don't know it, but we believe it and are confident we can convince you. Our new Spring patterns are "good for sore eyes" and worthy of your consideration. The prices are not in it when compared with the quality.

McDONALD & PERRY,

The Nobby Tailors, Great George Street.

TEA PARTY AND Picnic Supplies

We manufacture a full line of Temperance Beverages and supply everything required for fitting out saloons—also money making attractions to hire. Lowest prices and best satisfaction—On large orders we give our personal supervision to arranging and fitting up saloons. Call or write us for prices.
R.F. Maddigan & Co., Queen St., Charlottetown. 1511a twm

CEMENT!

In store and to arrive 1200 barrels Sydney Cement, 1200 barrels White's Cement For sale by
Garrett, Rattenbury & Messers, 14143w

CHICKEN LOAF

only cost you fifteen cents a loaf, and it makes the nicest lunch you ever tasted. Try some sandwiches made of Chicken Loaf and see how nice they'll be. Chicken Loaf is healthy and easy to digest. Take some with you the next time you go to a picnic. It's only 15c a box.
Frank McDonald's, Grafton St., Ch'town. 1821a

HARD COAL TO ARRIVE

The schr. "Calabria" is due to arrive here from New York early in June with a specially selected cargo of about 700 tons Anthracite coal in egg and chestnut sizes. This cargo will be sold at very low possible price while discharging. Book your orders at once as prices at mines advance each month.
PRAKE BROS. & CO, Ch'town 1414f.

COFFEE

Rich Old Mocha from Aden Rare Old Java from Batavia. A blend of these two for a morning stimulant. Rich, rare, and tasty. The best obtainable—40c per lb.
JAS. KELLY & Co.