

LOANS UP TO \$500.00

This is the Way We pay our bills—

And it's really the most sensible way! We go to General Finance Eastern Ltd. for a loan. We pay off all our bills and get with a "clean slate." We can repay in small monthly payments. Why don't you try this simple, practical plan.

General Finance Eastern Ltd. Phillips Building Charlottetown Office Hours 9-5:30 Grafton Street Phone 288 Box 454 Saturday 9-1

STOCK QUOTATIONS

MONTREAL STOCK NEW YORK STOCK EXCHANGE

Table with columns for Montreal Stock, New York Stock Exchange, and various stock prices including Bell Tel, Canadian Cement, and others.

first grade solids, jobbing price 35 1-38; Wholesale Que no 1 pasteurized storage 35 1-4, no 2 storage 34 3-4. Cheese: current receipt P.O.B. shipping point, white and colored western 30; delivered Montreal Que 20 3-4; wholesale white and colored western 21-21 1-4 nom; Que 20 3-4 nom. Potatoes: Que whites no 1 1.65-1.70; no 2 1.35-1.50; NB mountain no 1 1.75-1.80; PEI mountain 1.80-1.90; whites 1.75-1.80.

Grain

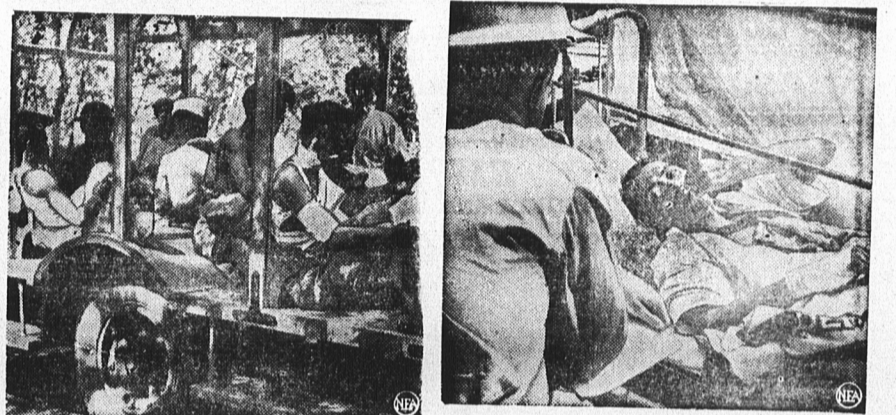
WINNIPEG, April 17—(CP)—Export trade and minor mill demand came into the market news on Winnipeg grain exchange today. Wheat futures closed unchanged, May at 70 1-4A a bushel and July at 80 3-8B. The coarse grain pit was flat with only minor transactions in oats, mostly by shippers. Barley was inactive and rye was neglected throughout the session. Grain futures close: Wheat: May 70 1-4A, July 80 3-8B. Oats: May 51 3-8B, July 50 1-4B, Oct 49 1-4A. Barley: May 64 3-4B, July 64 3-8B, Oct 63 3-4B. Cash prices: Wheat: 1 hard 79 1-8; 1 nor 79 1-8; 2 nor 78; 3 nor 78 3-4; 4 nor 72 1-2; 5 wheat 70; 6 wheat 67 3-4; feed wheat 65 1-4; 1 garnet 73 1-4; 2 garnet 72 3-4; 3 garnet 71 3-4; 1 amber durum 82 3-4. Oats: CW 51 1-8; ex 1 feed 49 1-8; 2 CW 49 1-4; ex 1 feed 47 1-8; 3 feed 44 5-8. Barley: 1 & 2 CW 6 row 64 3-4; 1 & 2 CW 5 row 64 3-4; 3 CW row 62 5-8; 1 feed 60 3-4; 2 feed 59 3-4; 3 feed 58 3-4.

Bataan's Wounded Grin and Bear It As Army Medicos Perform Miracles

When the full story of the defense of Bataan is told, a brilliant chapter will be on the fortitude of the wounded and the work, under the most trying conditions including the bombing of the chief hospital, of the army medical staff. The photos below, released just after Bataan's fall, shown scenes in the hospitalization areas.



Lt. Col. Jack Schwartz, of Ft. Worth, Tex., catches a breath of air after completing an operation in the makeshift operating room of No. 2 hospital at Bataan.



This Jap prisoner, pictured in a Bataan hospital, amazed at good treatment he received, decided he'd been mistaken for a Filipino and would be killed later. Maj. Weed, left, U. S. Army Intelligence, is seen questioning him.

Advertising Rates—Payable in Advance

Minimum Charge for Any Advertisements 25 Cents. Central Guardian locals, 50 per word; Western and Eastern locals 25 per word; Announcements and Coming Events 30 per word; Classified 50 per word; In Memoriam Notices 70 per inch; Lists of Birth and Spiritual Offerings, Cards, etc. 50 per name; Letters of Condolence 70 per inch; Wedding engagements 40 words for \$1.00 and 10 cents for every additional 3 words. Notices of Thanks and Appreciation, 70¢ per inch or 4¢ per word. Lists of Subscriptions 4¢ per inch. Address and Presentation \$1.00. Other rates on application.

Professional

READING—SPEAKING, ARTICULATION OF WORDS. Teaching, Miss Gertrude Davies. 130 Elm Ave. Phone 1971. 4-13-15-18.

To Let

TO LET—HOUSE 104 WEYMOUTH. Apply 222 Grafton. 4-18-11.

TO LET—FOR THE SEASON summer cottage at Rosebank. Phone 364-L. 4-16-31.

TO LET—LARGE UNFURNISHED front room with fireplace and closet. Phone 992-J. 4-17-21.

Female Help Wanted

WANTED—MAID FOR GENERAL housework. Apply 181 Kent. 4-17-31.

WANTED—KITCHEN GIRL FOR Borden Hotel. Apply Manager. 4-18-41.

WANTED—MATRON AND ASSISTANT Matron for Children's Home, Amherst, N. S. Good salary to right person. Apply with references to P. O. Box 986, Amherst, N. S. 4-18-31.

WANTED MAID, APPLY MRS. Gass, North River Road. 4-14-16-18.

WANTED—MAID FOR GENERAL housework. Plain cooking. Call or write Mrs. F. W. Tidmarsh, 6 Richmond. 4-18-31.

Salesmen Wanted

SALES POSITION UNAFFECTED by priorities. Maintenance specialty, wholesale direct from large manufacturer to consumer. Average sale pays \$200. Protected territory. Chance for advancement. Perfect sales instruction. Canadian factory in Toronto. Personal interview where possible. Box 1768, Cleveland, Ohio, U.S.A. 4-18-11.

Agents Wanted

PATENTED DEVICE SAVES GAS. Amazingly improves performance. Demonstrated in 30 minutes, any car, truck, tractor. Guaranteed harmless. Attractive agency proposition. Victory Mfg. Company, Cornwall, Ontario. N-4-18-11.

Men Wanted

SELL 200 NECESSITIES, DOMESTIC, kitchen, and farm products to a well established clientele in the neighborhood where you live. Protected territory. Reputed superior quality and quantity. Work ambition, knowledge of products, honesty assure success. No risk. Try selling direct to customers and profit by free training. Products not sold returnable. Ask for folder illustrating products in natural colors, plan and information without obligation. Famlex Products, 570 St. Clement, Montreal. N-5. Minard's kills pain.

Male and Female Help Wanted

HOW IS THE TIME TO GET Government job as Clerk Postman, Customs Clerk Steno, etc. 35 Dominion-wide exams. 1000 places war began. Free Booklet N. O. C. Schools Ltd., Toronto 10 Oakes in Canada. No Agents.

For Sale

FOR SALE—SOW AND TEN PIGS. Ed Ryan, Lot 40. 4-18-11.

FOR SALE—LARGE BUILDING. Apply to 248 Sydney St. 4-18-21.

FOR SALE—GENERAL PURPOSE House, coming four. H. Nelson, Marshfield. 4-11-15-18.

Canada

Province of

Prince Edward Island

In the Probate Court

The 26th day of March A. D. 1942.

In re Estate of William Cameron late of Long River in Queens County in said Province, farmer, deceased, testate.

To the Sheriff of the County of Queens County or any Constable or other person within said County

GREETING:

WHEREAS upon reading the petition on file of Daniel C. Mackay of London in Queens County County testator the administrator cum testamento annexo of the above named estate, praying that a true copy be issued for the purpose hereinafter set forth. You are hereby required to cite all persons interested in the said Estate to appear before the Judge present at the Probate Court to be held in the Court House in Summersville in Prince County, in the said Province, on Friday the 1st day of April, A. D. 1942, at the hour of eleven o'clock forenoon of the same day to show cause if any they can why the Accounts of the same should not be passed and the Estate should be prayed for in said petition and on motion of Ernest H. Strong, Esq. Proctor for said Petitioner. And I hereby ordered that a true copy of the petition published in the CHARLOTTETOWN INDEPENDENT GUARDIAN aforesaid ON EACH DAY hereafter for AT LEAST FOUR CONSECUTIVE WEEKS from the date hereof and that a true copy hereof be forthwith posted in the following places respectively, namely: in the Court House in Summersville, aforesaid, at the store of Ernest Dunning at Long River, at the store of F. J. & Kennedy at Kensington in Prince County aforesaid, so that all persons interested in the said Estate as aforesaid may have due notice hereof.

WITNESS His Honour Harold Leonard Palmer, Judge of the said Probate Court at Charlottetown aforesaid, the day and year first above written.

By the Court.

MURIEL C. LOWTHER, Registr. r.

11003-3-28-3-4-11-18.

Keep Minard's in the home.

Montreal Curb

(Canadian Press) Stocks Close Stocks Close. Bell Tel 142 1-2, Am O and P 95, Canadian Cement 7 1-4, Am Tel Tel 113 3-4, Can Car Found 4, Anaconda 24 1-4, Can Pacific 5 1-4, Baldwin Loco 10 1-2, Can Steamship 6 1-2, Beth Steel 32, Celanese 22, Ches Ohio 54 3-4, Cons Smelt 38, Chrysler 52 3-4, Dom Steel B 22 3-4, Elec Auto Life 23 3-4, Gen Elec 22 1-2, Gen Motors 33 3-4, Gt Nor Pfd 22 1-8, Kennebec 30, Mont Ward 25, Nat Brew 20 3-4, N Y Central 7 1-8, Noranda 6 3-4, Penn RR 20 1-3, Phil Pet Co 13 1-2, Std Oil NJ 32 1-2, St Law Com 31 1-4, St Law Pfd 29 1-8, Wpg Elec A 45 5-8, Wpg Elec B 85, U S Rubber 47, U S St Co 15 5-8, Vanadium Corp 24, West Union 64 3-8, Woolworth —.

Finance

NEW YORK, April 17—(AP)—The stock market today reaffirmed its pessimistic appraisal of the French situation and some elements of the domestic economic picture by another downward step to the lowest average levels since April 28, 1933.

At the close issues in the key departments ranged from fractions to 2 or more points. Numerous stocks established new bottoms for a long stretch of years.

The Associated Press 60-stock composite fell 3/4 of a point to 32.8. Its last rise was on April 8. Transactions totalled 418,995 shares, against 282,720 yesterday.

Canadian stocks were uneven. Lake Shore Mines and Distillers Seagram pfd each gained 1-8 and McIntyre Mines 3-8. Canadian Pacific eased 1-8, Dome Mines 1-4, and Walkers common 3-8. Distillers Seagram common, Brazilian Tractor, Ford of Canada "A," Walkers pfd and International Nickel common all were unchanged while Distillers pfd gained 1-2.

Among stocks posting new lows were Bethlehem Steel, Youngstown Sheet, Westinghouse, General Electric, Johns-Manville, Kodak, American Airlines, Boeing, American Telephone, Anaconda, Kennebec and Southern Railway.

NAZIS MISSED PLENTY LONDON—(CP)—raiders destroyed only a few binoculars when they bombed Woolwich Arsenal during the heavy raids on London, vast stores having been removed into the country after Dunkerque.

Minard's kills pain.

Banks

Table with columns for Montreal, Nova Scotia, Commerce, and Royal Bank, showing various stock prices.

Montreal Exchange

MONTREAL, April 17—(CP)—Utilities and papers were higher in the indices in trading today on the stock exchange and curb market. Firmer on the stock exchange in utilities were Gaineau and Shawinigan, while B.C. Power "B" and Winnipeg Electric "B" showed slips. O.P.R. was fractionally easier in carriers and freights. Stronger papers were St. Lawrence Corporation preferred and Price Brothers and among other industrials appearing Steel of Canada and Building Products were also a bit in advance. Algoma Steel, Canada Cement preferred, Canadian Car and Massey-Harris edged down fractions. Noranda was harder in pivotal metals and Consolidated Smelters worked lower. Imperial sported a plus sign and International Petroleum dipped fractionally in oil. In miscellaneous Imperial Tobacco did better and National Investment were in arrears. Total sales: 9,400 shares; Industrials, 7,600; Mines, 1,800.

Currencies

NEW YORK, April 17—(CP)—The Canadian dollar gained 3-16 of a cent to a discount of 2 3-4 per cent in today's final foreign exchange dealings. Ottawa Foreign Exchange Control Board rate 9.09-9.91 per cent discount. The pound Sterling finished unchanged at \$4.04.

Toronto Exchange

TORONTO, April 17—(CP)—Stocks shuffled about over a narrow range today and closed with the gold stocks up narrowly, the base metal and industrial issues slightly lower and the western oils unchanged. Trading was dull through most of the session and in the final hour the action speeded up to double the turnover of the first four hours. Aggregate turnover was 155,000 shares. Heavy trading in Ontario Nickel swelled the volume in the final hour. Lake Shore and Hollinger, both with gains of 25 cents, tried to improve sentiment in the final period. Hudson Bay and Nickel weakened 1-4 and other senior base metals held unchanged. Falconbridge was off 3 cents to a new low of 2.82. The industrial share index was down 27 at the close, mainly on the weakness of the steel, senior oils, utilities and papers. Losses of a point or more were netted by Canadian Breweries pfd, Gaineau 5 1-2 pfd, Moore Corporation A, and St. Lawrence Paper pfd. Vermilion, the most active of the western oils, traded 22,000 shares and gained 1-2 to 9. Home Oil was up a cent to 2.44 and Falco gained 3-4 to 3.

Markets At A Glance

(Canadian Press) Toronto—Industrials and base metals stocks lower; golds higher; junior oils steady. Montreal—Utilities and papers higher; other industrials lower; golds steady. New York—Stocks closed lower. Winnipeg—Wheat unchanged. New York—Cotton lower.

Produce Prices

MONTREAL, April 17—(CP)—Canadian Commodity Exchange. Butter spot: Que and western (92 score) 35 1-4B. Eggs spot: Eastern A-large 30-30 1-2; A-medium 28 1-2-28; pullets 24 1-2-25; E-B 26 1-2-27; E-C 23 1-2-24.

MONTREAL, April 17—(CP)—Produce market prices here today as reported by the Dominion Department of Agriculture follow: Eggs: graded shipment selling A-large 30-30 1-2; A-medium 28 1-2; pullets 24-24 1-2; B 26 1-2-27 1-2; C 24 1-2. Butter: first grade creamery prints, jobbing price, 36-36 1-2;

Yesterday's Market

CORRECTED FOR EVERY WEDNESDAY AND SATURDAY'S ISSUE. Eggs doz 32-35c, Cabbage 28-33c, Roast Beef 15-28c, Cream, qt. 40c, Boiling Meat 15-17c, Pork, lb. 18-22c, Steak, lb. 18-22c, Beef gr. 13-14c, Fowl, each \$1.00-\$1.25, Butter, dairy 35-38c, Corned beef 15-18c, Potatoes, pk 25c, Parsnips, 4 lbs. 18-20c, Celery 15c, Onions, 2 lbs. 25c, Tomatoes, lb 15-17c, Head lettuce 21c, Sweet potatoes, 2 lbs \$1.15-\$1.50, Cauliflower 35c, Asparagus 5c, Mushrooms 25c, New carrots, 3 bunches 45c, New rhubarb, 2 lbs 30-30c, Cooking apples, pk 1-7c, New cabbage, 3 lbs. 25c.

Mining

(Canadian Press) Stocks Close. Acme Oil 6, Aldermac 8 1-2, Argus 25, Arntfield 2 3-4, Anson 95, Baginase 5, Bath A Beattie 13 3-4, Bidgood 62, Brit Dom 5 7-8, Cdn Mal 25, CPR 23, Cent Pat 87, Chem Res 8 1-2, Chrysler 80, Chromium 165, Cochenour 48, Davies 11, Denile 10, Dome Oil 10 1-2, Duquesne 3 1-8, East Mal 125, Eldorado 282, Ferron 15 1-8, G. L. 10, Gods Lake 10 1-2, Gold Gate 705, Hard Rock 244, Hollinger 30, Home Oil 21, Hud Bay Min 7 3-4, Imp Oil 11 3-4, Int Nickel 810, Int Fels 45, Kerr Add 45, Kirk Lake 45, Lake Shore 700, Leitch 43, Little L.L. 93, Macassa 212, MacLeod 106, Malartic 123, McCall 39 5-8, McIntyre 57, McKenzie 57, McLellan 24, Moneta 10, Naybob 10, Noranda 62, O'Brien 62, Ont Nickel 62, Pacalta 2 1-4, Paymaster 13, Premier 108, Pick Crow 150, Pioneer 145, Powell 54, Pow Corp 2 7-8, Preston 40, Queenston 180, Senator 10, Sherritt 65, Sisco 35, Sladen 18, Slave Lake 2, Steam Rock 155.

FOR RENT

Large apartment in excellent location. Entirely redecorated throughout. Occupancy May 15th. \$40.00 a month. Apply: THE EASTERN TRUST COMPANY

For Sale

Double dwelling at 48 Great George St. Each side contains dining room, living room, den, kitchen, six bedrooms and bath. May be purchased on terms. Apply: THE EASTERN TRUST COMPANY.

For Sale

Compact house at 295 Richmond St. of eight rooms of stone and cement construction. Half of purchase price only required in cash. Price \$3800.00. Apply: THE EASTERN TRUST COMPANY.

How Are Your Eyes?

If you are having symptoms of strain—headaches, sore eyes or dizziness—consult a specialist. At your service with years of experience and a thorough refracting service. Call in and discuss your difficulties. G. F. HUTCHESON

FARM FOR SALE

For sale farm of the late Roy Ford, Glasgow Road. Consisting of 50 acres in high state of cultivation, well watered and fenced. New house, outbuildings in good repair. Apply to: MAYUS FORD, Administrator

FOR RENT

Large apartment in excellent location. Entirely redecorated throughout. Occupancy May 15th. \$40.00 a month. Apply: THE EASTERN TRUST COMPANY

For Sale

Double dwelling at 48 Great George St. Each side contains dining room, living room, den, kitchen, six bedrooms and bath. May be purchased on terms. Apply: THE EASTERN TRUST COMPANY.

For Sale

Compact house at 295 Richmond St. of eight rooms of stone and cement construction. Half of purchase price only required in cash. Price \$3800.00. Apply: THE EASTERN TRUST COMPANY.

How Are Your Eyes?

If you are having symptoms of strain—headaches, sore eyes or dizziness—consult a specialist. At your service with years of experience and a thorough refracting service. Call in and discuss your difficulties. G. F. HUTCHESON

FARM FOR SALE

For sale farm of the late Roy Ford, Glasgow Road. Consisting of 50 acres in high state of cultivation, well watered and fenced. New house, outbuildings in good repair. Apply to: MAYUS FORD, Administrator

FOR RENT

Large apartment in excellent location. Entirely redecorated throughout. Occupancy May 15th. \$40.00 a month. Apply: THE EASTERN TRUST COMPANY

For Sale

Double dwelling at 48 Great George St. Each side contains dining room, living room, den, kitchen, six bedrooms and bath. May be purchased on terms. Apply: THE EASTERN TRUST COMPANY.

For Sale

Compact house at 295 Richmond St. of eight rooms of stone and cement construction. Half of purchase price only required in cash. Price \$3800.00. Apply: THE EASTERN TRUST COMPANY.

How Are Your Eyes?

If you are having symptoms of strain—headaches, sore eyes or dizziness—consult a specialist. At your service with years of experience and a thorough refracting service. Call in and discuss your difficulties. G. F. HUTCHESON

FARM FOR SALE

For sale farm of the late Roy Ford, Glasgow Road. Consisting of 50 acres in high state of cultivation, well watered and fenced. New house, outbuildings in good repair. Apply to: MAYUS FORD, Administrator

FOR RENT

Large apartment in excellent location. Entirely redecorated throughout. Occupancy May 15th. \$40.00 a month. Apply: THE EASTERN TRUST COMPANY

For Sale

Double dwelling at 48 Great George St. Each side contains dining room, living room, den, kitchen, six bedrooms and bath. May be purchased on terms. Apply: THE EASTERN TRUST COMPANY.

For Sale

Compact house at 295 Richmond St. of eight rooms of stone and cement construction. Half of purchase price only required in cash. Price \$3800.00. Apply: THE EASTERN TRUST COMPANY.

How Are Your Eyes?

If you are having symptoms of strain—headaches, sore eyes or dizziness—consult a specialist. At your service with years of experience and a thorough refracting service. Call in and discuss your difficulties. G. F. HUTCHESON

FARM FOR SALE

For sale farm of the late Roy Ford, Glasgow Road. Consisting of 50 acres in high state of cultivation, well watered and fenced. New house, outbuildings in good repair. Apply to: MAYUS FORD, Administrator

FOR RENT

Large apartment in excellent location. Entirely redecorated throughout. Occupancy May 15th. \$40.00 a month. Apply: THE EASTERN TRUST COMPANY

For Sale

Double dwelling at 48 Great George St. Each side contains dining room, living room, den, kitchen, six bedrooms and bath. May be purchased on terms. Apply: THE EASTERN TRUST COMPANY.

For Sale

Compact house at 295 Richmond St. of eight rooms of stone and cement construction. Half of purchase price only required in cash. Price \$3800.00. Apply: THE EASTERN TRUST COMPANY.

How Are Your Eyes?

If you are having symptoms of strain—headaches, sore eyes or dizziness—consult a specialist. At your service with years of experience and a thorough refracting service. Call in and discuss your difficulties. G. F. HUTCHESON

FARM FOR SALE

For sale farm of the late Roy Ford, Glasgow Road. Consisting of 50 acres in high state of cultivation, well watered and fenced. New house, outbuildings in good repair. Apply to: MAYUS FORD, Administrator

FOR RENT

Large apartment in excellent location. Entirely redecorated throughout. Occupancy May 15th. \$40.00 a month. Apply: THE EASTERN TRUST COMPANY

For Sale

Double dwelling at 48 Great George St. Each side contains dining room, living room, den, kitchen, six bedrooms and bath. May be purchased on terms. Apply: THE EASTERN TRUST COMPANY.

For Sale

Compact house at 295 Richmond St. of eight rooms of stone and cement construction. Half of purchase price only required in cash. Price \$3800.00. Apply: THE EASTERN TRUST COMPANY.

FOR RENT

Large apartment in excellent location. Entirely redecorated throughout. Occupancy May 15th. \$40.00 a month. Apply: THE EASTERN TRUST COMPANY

For Sale

Double dwelling at 48 Great George St. Each side contains dining room, living room, den, kitchen, six bedrooms and bath. May be purchased on terms. Apply: THE EASTERN TRUST COMPANY.

For Sale

Compact house at 295 Richmond St. of eight rooms of stone and cement construction. Half of purchase price only required in cash. Price \$3800.00. Apply: THE EASTERN TRUST COMPANY.

How Are Your Eyes?

If you are having symptoms of strain—headaches, sore eyes or dizziness—consult a specialist. At your service with years of experience and a thorough refracting service. Call in and discuss your difficulties. G. F. HUTCHESON

FARM FOR SALE

For sale farm of the late Roy Ford, Glasgow Road. Consisting of 50 acres in high state of cultivation, well watered and fenced. New house, outbuildings in good repair. Apply to: MAYUS FORD, Administrator

FOR RENT

Large apartment in excellent location. Entirely redecorated throughout. Occupancy May 15th. \$40.00 a month. Apply: THE EASTERN TRUST COMPANY

For Sale

Double dwelling at 48 Great George St. Each side contains dining room, living room, den, kitchen, six bedrooms and bath. May be purchased on terms. Apply: THE EASTERN TRUST COMPANY.

For Sale

Compact house at 295 Richmond St. of eight rooms of stone and cement construction. Half of purchase price only required in cash. Price \$3800.00. Apply: THE EASTERN TRUST COMPANY.