

A TRAINED NURSE

After Years of Experience, Advises Women in Regard to Their Health.

Mrs. Martha Pohlman of 65 Chester Avenue, Newark, N. J., who is a graduate nurse from the Blockley Training School at Philadelphia, and for his year Chief Clinic Nurse at the Philadelphia Hospital, writes the letter printed below. She has the advantage of personal experience, besides her professional education and what she has to say may be absolutely relied upon. Many other women are afflicted as she was. They can regain health in the same way. It is prudent to heed such advice from such a source.



Mrs. Pohlman writes: "I am firmly persuaded, after eight years' experience with Lydia E. Pinkham's Vegetable Compound, that it is the safest and best medicine for any suffering woman to use."

"I had pains down through my limbs so I could hardly walk. It was as bad as a case of female trouble as I have ever known. Lydia E. Pinkham's Vegetable Compound, however, cured me within four months. Since that time I have had occasion to recommend it to a number of patients suffering from all forms of female difficulties, and I find that while it is considered unprofessional to recommend a patent medicine, I can honestly recommend Lydia E. Pinkham's Vegetable Compound, for I have found that it cures female ills where all other medicine fails. It is a grand medicine for sick women."

"Money cannot buy such testimony as this—merit alone can produce such results, and the ablest specialists now advise that Lydia E. Pinkham's Vegetable Compound is the most unversally successful remedy for all female diseases known to medicine."

"When women are troubled with irregular, suppressed or painful periods, weakness, displacement or alteration of the female organs, that bearing-down feeling, inflammation, headache, bloating (or flatulence), general debility, indigestion, and nervous prostration, or are beset with such symptoms as dizziness, faintness, lassitude, excitability, irritability, Lydia E. Pinkham's Vegetable Compound Succeeds where Others Fail."

Banner Races

The Banner Meeting of the season will be held at

UPTON DRIVING PARK

—ON—

Thursday 25th

under the management of G. A. Besory and Geo. McDonald.

3 Minute Class Pure \$25.00

2.35 Class Pace and Trot " 30.00

Free-for-all Pace and Trot " 50.00

Entrance fee 5 per cent of Purse

5 percent additional from winners. Four Monies, Races finish in five heats.

Entries positively close on Tuesday 23rd inst with

P. C. BROWN, Secy.

Revere Hotel

to-20d51 tw2l.

New We Are Ready

FOR YOU to come and have your Xmas Photo taken

BY BAYER

WE HAVE all the up-to-date appliances AT

Gavin, Gentzel & Co.

Photographer.

FOR SALE!

Full Roller Process Flour mill, best American make, only run few months, just as good as new and will be sold at a bargain.

Reason for selling ill health.

Write for particulars.

R. JOHNSONS & SON, Pugwash N. S.

TANGLED AFFAIR IN MANCHURIA

Japan Mainly Faithful to Her Obligations—Opening of Antun Seems to Be an Exception—Germany Involved China Perversely Obstructive as to Moukden

LONDON, Oct. 22.—Dr. Morrison, the British correspondent of the Times, writes as follows of conditions in Manchuria: "For some time past I have been engaged in a tour of inspection in Manchuria. Japanese railway construction proceeds actively. The Hsiao-nan-tsun terminus of the Northern Chinese Railway will within a few days be joined up with Moukden by a line with the 3.4 in. Japanese gauge. The distance is thirty-six miles. It is not yet decided whether China will purchase the line outright and convert it to her standard gauge, or whether she will consent to work it on a joint account under Japanese control. The railway connecting the junction between the two capitals is of immense advantage. Its bridge across the Liao River, 220 feet long allows ample room for the passage of junks, several hundreds of which are already passing daily."

In Manchuria the Japanese section of the Chinese Eastern Railway is complete from Port Arthur to Sui-yung-shan, a distance of 965 miles. The restoration will be completed to Kuan-on-ling, thirty-four miles further, from which point to Kwan-cheng-tee, forty miles further, Russian trains are now running. This section in accordance with the treaty, will be handed over by the Russians to the Japanese next week. The Decauville Railway from Moukden to Antun, on the Yalu, 187 miles over the mountains, is still a military line, but will within two years be converted to the standard gauge, as will the Japanese section of the Manchurian Railway, and will then be linked to Antun by the high-level bridge across the Yalu to the Korea trunk line, which is already of the standard gauge.

Conditions in Manchuria are not yet normal, nor can they be till April 15 next year, when the military administration will have relinquished to the civil authorities everything except the railway. Inquiry and observation convince me that the Japanese are faithfully fulfilling their obligations regarding evacuation and the withdrawal of military administration, and information reaching me to the contrary is equally observing her obligations to withdraw her troops from Northern Manchuria. The Chinese officials are impatient under foreign military administration, which, however, probably bears more lightly upon the people than any military occupation ever known on account of the excellent discipline. The chief complaint is the difficulty of procuring the necessary raw materials, Japanese soldiers. The class of Japanese going into Manchuria is causing much concern to the Japanese authorities. Already there are 1,000, exclusive of military, at the three places, Newchwang, Moukden, and Antun, mostly small pedlars. Thousands of undisciplined are flocking in, especially women of a certain class, who are spreading over the country and entering to the Chinese, to the detriment of the good name of our allies.

The two main reasons in Manchuria now are the opening of the treaty ports and the establishment of Chinese customs houses. Though the navy is recovering, the present trade conditions are still unsatisfactory in consequence of over-trading in anticipation of demands after the war, which have not been realized, aggravated by the unforeseen competition of the duty-free influx into Manchuria of goods by Dairen, Antun, and Vladivostok. So serious is this competition that foreign merchants at Newchwang claim that pending the establishment of Chinese customs at other places goods should be admitted duty free into Newchwang, to prevent all the customs revenues of Newchwang, amounting last year to more than \$2,000,000, were paid to the Japanese. Hence and entirely unappreciated by Japan, though a vague promise has been made that provided Russia will do the same with her appropriations, a portion may be refunded to China some day. The revenues so collected are partly applied to the purchase of land at an arbitrary price for roadmaking and future Japanese settlement.

P. E. ISLAND LOCAL MARKETS

CHARLOTTETOWN MARKETS.

(Corrected every Tuesday and Friday)

Beef (quarter) per lb.	0 10 to 0 18
Beef (small) per lb.	0 09 to 0 14
Mutton per carcass	0 09 to 0 14
Old-time Dressed	0 08 to 0 07
Butter fresh per lb.	0 10 to 0 23
Cheese per lb.	0 00 to 0 20
Flour per cwt (Island)	0 00 to 2 15
Flour per bbl (imp.)	4 75 to 6 00
Wheat new	60 to 0 12
Straw per cwt.	0 20 to 0 23
Whiskies per gal.	40 to 0 60
Gasoline per gal.	0 04 to 0 03
Hay per cwt.	0 48 to 0 50
Oats	0 37 to 0 40
Celery per bunch.	0 10 to 0 18
Pork	0 07 to 0 08
Peanuts per doz.	0 00 to 0 10
Lettuce per lb.	0 05 to 0 00
Geese each	1 00 to 1 10
Chickens each	0 30 to 0 40
Apples per pk.	0 18 to 0 15
Lamb per lb.	0 10 to 0 14
Cauliflower	0 05 to 0 10
Beets per doz.	0 08 to 0 12
Carrots per doz.	0 08 to 0 12
Turnips per bush.	0 12 to 0 16
Potatoes per bus.	0 20 to 0 25
Tomatoes per lb.	0 00 to 0 04
Green Tomatoes per pk.	0 00 to 0 15
Onions per lb.	0 00 to 0 04
Cheese per lb.	0 00 to 0 13
Plums per qt.	0 10 to 0 18
Damsons per qt.	0 10 to 0 12
Squashes each	0 10 to 0 20
Pumpkins each	0 10 to 0 20
Brant, per pair	1 15 to 1 25
Black Ducks per pair	0 65 to 0 75
Plover per pair	0 20 to 0 25
Wild Geese each	0 75 to 1 00

SUMMERSIDE MARKETS.

(Corrected Daily)

Barley per bus.	0 35 to 0 40
Beef carcasses per lb.	0 05 to 0 04
Buckwheat	0 50 to 0 35
Butter per lb.	0 18 to 0 20
Califfins lb.	0 04 to 0 10
Eggs per doz.	0 00 to 0 17
Hay pressed	0 40 to 0 03
Straw pressed	0 25 to 0 40
Hides per lb.	0 00 to 0 10
Stoller Mill Flour per cwt.	1 00 to 2 00
Oatmeal, per 100 lbs.	2 50 to 0 00
Oats (black) per bush.	0 00 to 0 35
Oats (white) per bush.	0 00 to 0 37
Wheat per bushel	0 70 to 0 80
Pork	0 00 to 0 23
Corn, per bush.	0 00 to 0 23
Turnips	0 18 to 0 15
Geese per lb.	0 00 to 0 09
Turnips per lb.	0 12 to 0 11
Ducks per lb.	0 10 to 0 12
Chickens per lb.	0 08 to 0 10

MONTAGUE MARKETS.

Hay per bus.	0 00 to 0 30
H. S. per quarter	0 30 to 0 30
Headlock per quarter	2 75 to 3 00
Cod, per quintal	0 41 to 0 44
Utah per bush.	0 00 to 0 40
Corations per bus.	0 00 to 0 25
Turnips per bus.	0 00 to 0 10
Eggs, per doz.	0 00 to 0 18
Oatmeal, per cwt.	0 01 to 0 30
Butter per lb. (dairy)	0 18 to 0 21
Butter per lb. (evaporated)	0 00 to 0 23
Hay pressed	0 00 to 0 10
Whiskies, per pair	0 40 to 0 40
Hides per lb.	0 00 to 0 08
Barley per bus.	0 09 to 0 30
Hay per ton	0 00 to 0 10
Pork per lb. (small)	0 08 to 0 10
Pork per lb. (small)	0 08 to 0 10
Lamb per lb.	0 05 to 0 07
Mashed, each	0 05 to 0 07
Wool, per lb.	0 00 to 0 30
Callifins, per lb.	0 00 to 0 10
Flour (roller process) per cwt.	0 00 to 2 00
Apples, per bus.	0 00 to 1 00
Carrots, per bus.	0 00 to 0 30
Peanuts per bus.	0 00 to 0 40
Beets per bus.	0 00 to 0 35

CONSTIPATION CURE

Have you got that new jacket yet? If not we are exhibiting a few new ones by express. Come in and see them. 18 received last week 9 this a. m. and a few more to come. Fax, Paton & Co. 10-2201.

One of Three Things Always Cause RHEUMATISM

Do you know the system rids itself of waste matter through bowels and kidneys? Yes, but by the skin as well.

As a matter of fact, the skin rids the system of more urea than the kidneys do.

If the skin, or bowels, or kidneys are unhealthily—they won't throw off enough urea. This urea is changed into uric acid—carried by the blood to joints and nerves—causing Rheumatism.

One never inherits Rheumatism. One does inherit weak kidneys, irregular bowels and bad skin action.

Fruit-A-Tives

will positively cure Rheumatism because they increase the eliminating action of skin, kidneys and bowels—and make these three organs so vigorous and healthy that there can be no urea or waste retained in the system to poison the blood and irritate the nerves.

FRUIT-A-TIVES are fruit juices, combined with tonics, the whole forming the most effective cure for Rheumatism.

See a box or 6 boxes for \$4.50. Sent on receipt of price if your druggist does not handle them.

FRUIT-A-TIVES LIMITED OTTAWA.

It's Nutritious

Beaver Flour contains all the nutriment—all the blood, brain and muscle-building properties—of the wheat kernel.

Beaver Flour

is a blend of the choicest Manitoba Spring and Ontario Fall Wheat.

The grade of wheat selected for Beaver Flour—being the finest grown in Canada—contains no chaff and no extraneous matter. It is the best for bread, cakes and pastry, just by Beaver Flour.

Your grocer will supply you as usual. Dealers also for prices on Flour, Cakes and Pastry, just by Beaver Flour.

Write to T. H. Taylor Co., Chatham, N. S.

Black Diamond Line



The S. S. "Bopavista" sailing from Montreal Tuesday October 23rd will be due at Charlottetown Thursday evening October 25th, and on Friday Oct. 26th will sail for St. John's, Newfoundland via Sydney, and North Sydney, carrying horses, cattle and sheep on deck, and produce under deck at lowest possible rates. For further particulars apply to

PRATT BROS. & Co., Agents.

AUCTION!

FURNITURE FOR SALE

We are entrusted by Miss Anna B. Mutch to sell by public auction at her house on Prince Street, next Dr. Carruthers, on Thursday, Oct. 25 1906 commencing at 10 o'clock a.m. all her household furniture comprising parlor, dining room, 14 bed rooms, hall, and kitchen, furniture, curtains, shades, carpets, mats, rugs, oil cloths, linoleums, dishes, glass ware, cutlery, kitchen Highland Range, together with a large quantity of bedding, blankets, bed springs, mattresses all of which are in first class condition. Terms cash. Benn, Carter & Co. auctioneers. 15-20351.

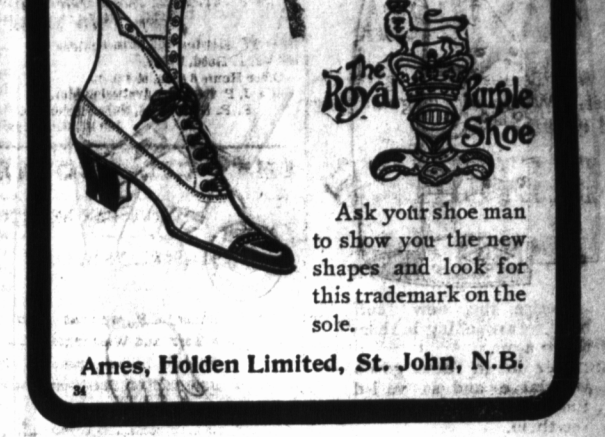
Cloth AND CLOTHES

It takes more than just cloth to make good clothes. We have the goods and the ability to make the right kind of suits for you. You'll look well and feel satisfied if you let us fit you and if money-saving means anything to you, this is the place.

McDonald & Perry, The Nobby Tailors, Gt. George St.

Well-Dressed Women

who want smart, stylish shoes, should insist on seeing.



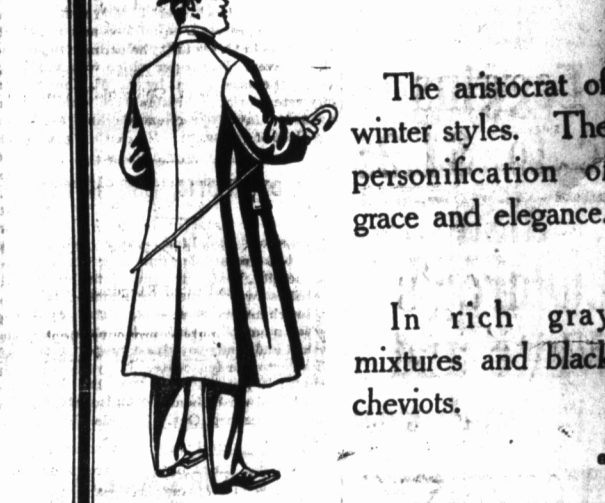
Ames, Holden Limited, St. John, N.B.

FIT-REFORM

FOUNDERS IN CANADA OF Hand Tailored Garments, Completely Finished.

THE "CREIGHTON"

Tight fitting Body Coat



Prowse Bros., Charlottetown.

When you buy a ready-to-wear coat or skirt you want the best.

are the most reliable garments in the trade, the materials are thoroughly shrunken ensuring a permanent shape and fit.

Britannia Coats and Skirts



Ask for Britannia Coats and Skirts.

I Can Sell Your Real Estate or Business no Matter Where Located

Property and Business of all kinds sold for cash in all parts of the United States. Don't waste. Write today describing what you have to sell and give cash price on same.

If you Want to Buy

Any kind of business or real estate anywhere, at any price, write me your requirements. I will have you time and money.

DAVID P. TAFF

THE LAND MAN, 415 Kansas Ave. Topeka, Kansas

THE CUP

that chemists but not fabricists

The famous Dominion Blend Tea

Get this brand from your grocer. Accept no substitutes.