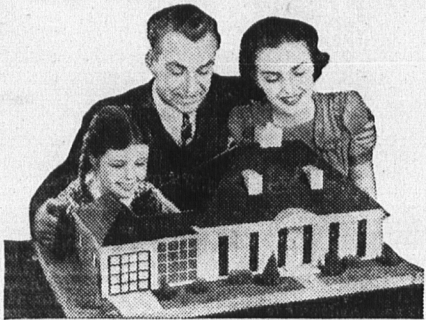


1871 • 70 Years of Security to Policyowners • 1941



### Build Your House Upon a Rock

MEN are looking thoughtfully into the future... planning not only for their families' welfare but for their own.

The more they look into the future, the more they realize that Life Insurance is the safest and soundest way to set up an adequate estate for present protection and future needs.

That explains why more families are protected by Confederation Life policies than ever before.

Before You Insure Consult

## Confederation Life Association

HEAD OFFICE TORONTO

BRANCH OFFICE: Bank of Nova Scotia Building, Charlottetown—W. G. HOGG, C. L. U., Manager.

### DOMINION OF CANADA PROVINCE OF PRINCE EDWARD ISLAND

#### IN THE PROBATE COURT

The 6th day of August, A. D. 1941

In Re Estate of Artemas Ferguson late of Bethel in Queens County in the said Province, Farmer, deceased testate.

To the Sheriff of the County of Queens County or any Constable or literate person within said County.

#### GREETING:

WHEREAS upon reading the petition on file of Leigh Ferguson of Bethel aforesaid, Farmer, the Administrator of the above named estate, praying that a citation may be issued for the purpose hereinafter set forth; You are therefore hereby required to cite all persons interested in the said Estate to be and appear before me the Judge present at a Probate Court to be held in the Court House in Charlottetown in Queen's County, in the said Province, on Monday the 15th day of September next coming, at the hour of eleven o'clock forenoon (Daylight Saving Time) of the same day to show cause if any they can why the Accounts of the said Estate should not be passed and the Estate closed as prayed for in said petition and on motion of Donald McKinnon, Esq., Proctor for said Petitioner.

And I do hereby order that a true copy hereof be forthwith published in some newspaper published in Charlottetown aforesaid once in each week for at least four consecutive weeks from the date hereof and that a true copy hereof be forthwith posted in the following public places respectively, namely, in the hall of the Court House in Charlottetown aforesaid, at the School-house in Bethel aforesaid, and at the School-house in Mount Herbert in Queens County aforesaid, so that all persons interested in the said Estate as aforesaid may have due notice thereof.

WITNESS His Honour Harold Leonard Palmer, Judge of the said Probate Court at Charlottetown aforesaid, the day and year first above written.

(Sgd.) MURIEL C. LOWTHER, Registrar.

L-288-8-12-19-26-9-2.

### CANADA PROVINCE OF PRINCE EDWARD ISLAND

#### IN THE PROBATE COURT

A. D. 1941

In Re Estate of Sarah Dingwell formerly of Summerside in Prince County and late of Bay Fortune in King's County in the said Province, Single Woman, deceased, intestate.

To the Sheriff of the County of Kings County or any Constable or literate person within said County.

#### GREETING:

WHEREAS upon reading the petition on file of Alden McKie of Bay Fortune in King's County, Farmer the Administrator of the above named estate praying that a citation may be issued for the purpose hereinafter set forth; You are therefore hereby required to cite all persons interested in the said Estate to be and appear before me the Judge present at a Probate Court to be held in the Court House in Charlottetown in Queen's County, in the said Province on Wednesday the first day of October next coming, at the hour of twelve o'clock noon of the same day to show cause if any they can why the Accounts of the said Estate should not be passed and the Estate closed as prayed for in said petition and on motion of Arthur F. McQuaid Proctor for said Petitioner.

And it is hereby ordered that a true copy hereof be forthwith published in some newspaper published in Charlottetown aforesaid once in each week for at least four consecutive weeks from the date hereof and that a true copy hereof be forthwith posted in the following public places, namely, in front of the Court House in Souris, at the store of Matthew & McLean Ltd. in Souris and at the store of Ernest Johnston at Fortune Bridge all in Kings County aforesaid, so that all persons interested in the said estate as aforesaid may have due notice thereof.

WITNESS His Honour Harold Leonard Palmer, Judge of the said Probate Court at Charlottetown aforesaid the day and year first above written.

(Sgd.) H. L. PALMER, Judge.

L-83-8-26-29-16-41.



CORRESPONDENT HOME

Richard C. Hottel, United Press correspondent, spent almost four months in Berlin jails, charged with suspicion of espionage. He was released on July 8, exchanged for a German prisoner in the U. S. and arrived in New York recently.

#### STEEL FRAMES AID BUILDING

Many houses have been built using structural and stripsteel frames, and a number of factors are taken into consideration in such cases.

The elimination of condensation of lightweight steel construction, is a very vital factor in all methods. Only through its elimination on interior and concealed steel surfaces can the resistance to corrosion of the metal sections of the house be sufficient to be practical for sound permanent construction.

Sheets of various metals such as steel, copper, zinc, and aluminum are used for exterior and interior surfaces. These are secured to steel or wood framing.

### Mortgage Sale

NOTICE is hereby given that there will be sold by Public Auction in front of the Law Courts building in Charlottetown in Prince Edward Island on Saturday, the Twentieth day of September, A. D. 1941 at the hour of 12 o'clock noon the following tract of land:—ALL THAT TRACT, piece and parcel of land situated, lying and being on Township number thirty-five in Queens County, bounded and described as follows, that is to say:—COMMENCING on the shore of Bedford Bay at the Northeast angle of land in possession of John William MacDonald, thence in a southerly direction along John William MacDonald's land until it meets the shore of Oyster Cove, thence East along the shore of Oyster Cove to land in possession of Angus McDougall's land, thence Northeasterly along Angus McDougall's line to the South side of Grand Tracadie Road, thence along the Grand Tracadie Road until it meets land in possession of John J. McNabb, thence Northeasterly along John J. McNabb's line to shore of Bedford Bay, thence Northwesterly along various courses of the shore to the place of commencement, containing one hundred and eight acres of land a little more or less, being thus described in an Indenture of Mortgage, dated the Nineteenth day of April, A. D. 1918, from Donald James McLaughlin of Grand Tracadie in Prince Edward Island, Farmer, to Alexander Horne of Charlottetown in Prince Edward Island, Merchant, and duly assigned to the undersigned.

The above sale of land is made pursuant to a power of sale contained in the said mortgage, default having been made in the payment of principal and interest secured thereby.

For further particulars apply at the office of N. W. Lowther, Solicitor, 86 Great George Street, Charlottetown, or to the undersigned.

DATED this 11th day of August, A. D. 1941.

HOWARD R. HILSON and H. HOOPER HORNE, Assignees.

### Weekly Live Stock Market Report

OTTAWA Aug. 21st 1941

#### SUMMARY

Heavier supplies on offer and a smaller volume of stock moving on export failed to lower prices on cattle markets throughout the country during the past week. With a good domestic demand and beef moving freely out of packers' coolers, cattle prices ruled firm, with an occasional advance of 25c., on the better grades of butcher material. Calves were also good sellers and recorded gains of 25c. to \$1.00 at major markets.

There was little change in hog prices but lambs recovered a good deal of the recent losses, notably at Montreal and Winnipeg, as well as Saskatchewan markets.

#### EASTERN CATTLE MARKETS

The opening cattle market was dull at TORONTO but the trend was soon reversed and a heavy run was taken care of at steady prices under active trading. Weighty steers sold at \$6.25 to \$6.50, with two prime loads topping at \$9.75 and butcher steers and heifers brought \$7.25 to \$8.85. Stockers were active sellers up to a high of \$8.35. It was an active trade at MONTREAL, with steers 25c. or more higher and good kinds making \$9 to \$9.75. Medium to good cows brought \$6.50 to \$7, and an odd \$7.35.

Finished cattle of desirable weights were decidedly lacking in the Maritimes, but good to choice steers were again quoted at \$8.50 to \$9.50.

#### WESTERN CATTLE MARKETS

Trading was active and prices firm to higher throughout the west. Under a good local demand and despite larger arrivals, the WINNIPEG cattle market ruled strong to 25c., higher on butcher cattle and the better grades of stockers and feeders. The best of the killing steers moved at \$9 to \$9.75, and fleshy feeders for shipment to the south were taken at \$8 to \$8.50. Other Western markets had the benefit of an active trade and CALGARY sold medium to good grass steers at \$7.50 to \$8.50, with odd dry-feds at \$9, while the practical top on steers at Edmonton was \$8.75. The high point reached at PRINCE ALBERT was \$8.25; MOOSE JAW and REGINA \$8.50; SASKATOON \$8.25; and VANCOUVER \$9.

#### UNITED STATES MARKET

The quota of 100,000 calves which may enter from all countries into the U. S. annually is rapidly becoming exhausted. According to a release by the United States Treasury Department, U. S. imports of calves from January 1st to August 2nd inclusive totalled 84,904 head. Since the latter date, Canada has shipped approximately 4,500 head across the line. Later figures on imports from Mexico are not available.

Live stock shipments to the United States during the past week included 4,619 beef cattle, 443 dairy, and 1,489 calves. The totals to date this year, with corresponding figures for 1940 in brackets, are beef cattle 83,845 (71,000); dairy 11,952 (9,916); calves 51,111 (57,236); hogs 34,632 (180). Beef cattle exports, under the third quarterly quota from July 1st to August 21st, were 33,646 (13,670).

Sales of Canadian steers at Buffalo ranged between \$10 and \$11 equivalent to about \$8.50 to \$9.50 at Toronto. St. Paul quoted medium quality Canadian steers at \$10.25, bulls \$8.25 to \$9.25, cows \$8 to \$9, and good to choice veal calves \$10.50 to \$13.00.

#### CALF MARKET AGAIN STRONGER

Calf prices ruled strong to higher at all markets. Toronto paid \$12.50 to \$13 for choice veals, with an occasional top of \$13.50, while Montreal sold medium to good veals from \$11 to \$12.50, with one sale at \$13. Winnipeg advanced sharply to a top of \$11, and the high point reached at Calgary, Edmonton, Prince Albert, Moose Jaw and Vancouver was \$9. Saskatoon had a top of \$10, but mostly \$9.50; and Regina \$10.00.

#### LITTLE CHANGE IN HOG MARKET

With the exception of an increase of 10c. at Toronto and a little easiness at a couple of western markets, hog prices held steady. Toronto closed at \$14.00 to \$14.50 for grade B-1 hogs dressed, under a heavy outside demand; and Montreal continued to pay \$14.75. Winnipeg was on the heels of \$13.50 for the basic grade; Calgary \$13.15 to \$13.25; Edmonton \$13 to \$13.15; Prince Albert \$13 to \$13.35; Moose Jaw \$13.05 to \$13.30; Regina \$13.20; Saskatoon \$13 to \$13.15; and Vancouver \$14 to \$14.25.

#### THE WOOL MARKET

Nova Scotia wool market reports show medium and low medium wools sold to manufacturers at 30-1-2 to 33c. per lb. Demand is reported slow for Ontario domestic with prices practically unchanged from last week. Quotations received show medium, low medium and low at 30 to 31c., black and grey 26c. per lb. Western rough wool, choice quality, fine medium grade, was reported at 30c. per lb., while western domestic medium and low medium staple was listed at 26c. per lb., at Winnipeg.

Human beings are able to live about four days without water. Minard's kills pain.



SUITS TOPCOATS SHIRTS

For Fellows Who Want To Go

# BACK-TO-SCHOOL

## DRESSED IN THE RIGHT KIND OF CLOTHES FOR BOYS

It's Back to School, and back to Prowse's in the way for values in Boys' Clothing. These are typical values - Fine Wool, Cheviot, Tweed or Worsted Suits, Longies in prep sizes; Knickers in the boys' sizes, Bargains in both. Tops for style, wearability and price—

JUNIOR BOYS' SUITS In Checks and Tweeds, single and double breasted with two Pants. Blue, Brown, Grey and Airforce. Sizes 22 to 28. Prices— \$6.50 to \$10.00

BOYS' SUITS Larger Boys' Suits with one and two Pants, single and double breasted, fancy back models, newest shades. Sizes 28 to 33. Prices— \$10.00 to \$14.95



### STUDENTS SUITS

In Tweeds and Worsteds, single and double breasted, fancy and plain models in Blues, Green, Brown and Teal Blue. Sizes 34 to 38. Prices— \$15.00 to \$25.00



#### Boy's Shirts

Boys' Shirts in Chambrays and Broadcloths. All sizes and colors. Collar attached. Prices— 59c. to \$1.00



#### New Neckwear

Boys' Neckwear, Boys' and Students' Ties in fancy satin stripes and plain colors. Prices— 25c. to \$1.00



#### Underwear

Boys' Knit Shirts and Shorts. Price 29c. each. Boys' Combinations, Athletic style. Sizes 22 to 34. Prices— 39c. and 45c.

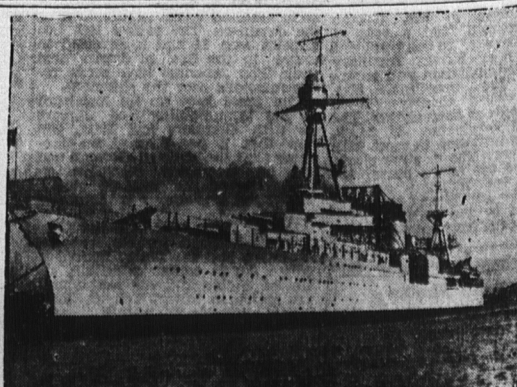
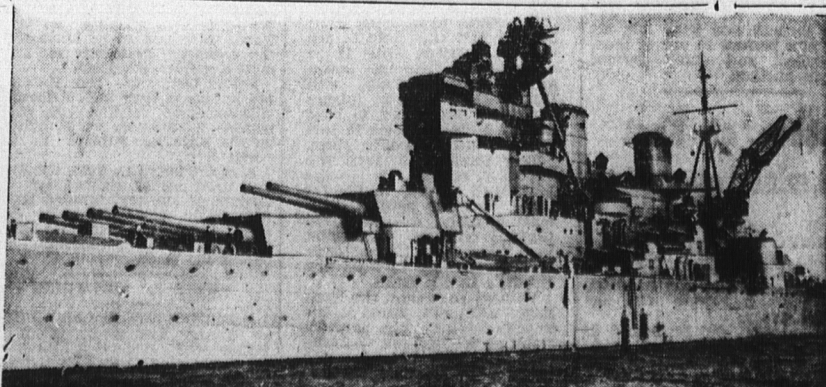


#### Felt Hats

Boys' and Students' Hats in the new Fall Styles and Colors. Blue, Green and Brown. Prices— \$1.95 to \$2.95

# PROWSE BROS., LTD.

For the Best in Men's and Boys' Wear



These are the two Churchill-Roosevelt meeting ships. On board were conferences that set a new mark in discussions between the heads of nations. One meeting was on H.M.S. Prince of Wales (LEFT), a new British battleship which took part in the destruction of the Bismarck. Another meeting of the series which produced the world-moulding statement of victory aims, took place on board the United States cruiser Augusta.