

HAY

Owing to stormy weather, bad roads and great quantities of snow, farmers who have hay to press have been unable to get it pressed, as a consequence hay has been very scarce in the city and we have been obliged to bring over some carloads of New Brunswick Pressed Hay for our retail trade.

We have now in stock some good NO. 2 UPLAND

Pressed Hay

In small bales. Can supply in any quantity up to carloads lots. Special price in ton lots shipped to any station.

We want some PRESSED STRAW delivered at our warehouse. Highest price paid, either in cash or exchanged for feeds.

Carter & Co. LIMITED

416-3-19-31

NEWSY NOTES

BY AGRICOLA

Earthquakes And Storms

In a former paper I advanced the thesis that gravitation caused (1) movements of the water known as tides; (2) movements of the air, as gales; and (3), movements of the earth, as earthquakes; the latter, however, only assuming major proportions, under certain conditions and at certain places. Some preliminary considerations are necessary before an attempt is made to support these theories by examples collected over a long period of years.

The pull of the gravitational force will be increased (1) when the moon or some planet is in conjunction with the sun; (2) when the moon or some planet is in opposition to the sun; (3) when the moon is in conjunction with some planet or, (4) when two planets are in conjunction.

With regard to the tides, they may be dismissed with the remark that everyone agrees that the highest are produced by the sun and moon in conjunction (new moon), the next highest by the sun and moon in opposition, (full moon) and the lowest by those two celestial bodies in quadrature.

The second argument, that high winds are produced in the manner indicated in the second paragraph, is not so generally believed, if at all. Yet on following out a graph of the

barometric pressure for a great many years, I find that there is always a fall of the barometer at full or new moon, generally the day after, sometimes the day before. This took place in a marked degree after last full moon, of which more anon. Rustic meteorology makes much of the moon in weather forecasting, and especially of the crescent moon; but the results were so often disappointing that I became a confirmed sceptic until I noticed the facts just set forth. With the fall of the barometer is associated high winds and other unpleasant conditions. A singular feature is that on two occasions a great fall took place here without any storm to speak of, the newspapers afterwards reported heavy gales in the U. S. A.

With regard to earthquakes, there was at one time some attempt made to connect them with sun-spots. They are in my way of thinking, not cause and effect, but what is in legal language called collateral; that is, the same cause (gravitation) produces both.

The earth as it speeds around the sun, is actuated by two forces. The centripetal force is that which draws it towards the sun and is therefore a manifestation of the law of gravity—the attraction of a large material body for a smaller one. The other, the centrifugal force, makes the earth inclined to fly off at a tangent, in a straight line. These forces, the one contradicting the other, as it were, effect a sort of compromise every second and the result is a more or less circular orbit of revolution. I cannot remember reading any explanation of the origin of the centrifugal force, but believe that the "straight line" is but the arc of another orbit, so vast as to be inconceivable, round which the whole solar system is travelling. Astronomers glimpse this when they inform us that the "apex of the path of the solar system" is near the star Pi in the constellation Hercules.

The revolution of the earth round the sun may be illustrated in miniature by whirling a ball at the end of a string. The string represents the centripetal force holding the ball to the centre (the whirler in this case) and if the string be released the ball will fly off at a tangent—the effect of the centrifugal force. If the ball be made of some substance whose particles have but slight cohesion—like brick clay—the motion of whirling it will cause it to fly apart, from the strain imposed by the two conflicting forces. In the same way the earth is subjected to an incessant strain, with tremors continuous, profound and, in the main, unnoticed except by the seismograph.

If either the centrifugal or the centripetal force be increased then the extra stress imposed will line things up to produce a major "quake" in some favorite region, that is, in the neighborhood of a "fault." This term, a familiar and troublesome one to the coal-miner, denotes a deep vertical or oblique break in the strata with the vein lying at a different depth on each side of the break. There has been a dislocation and a slipping down of the "earth's crust," a bugbear of the coal-owner who much bear the expense of another shaft to pick up the errant seam. Such a fault is like a weak spot in the human system; any trouble "flies to it." We have an instance in our Fundean fault, which is responsible for the earthquakes that visit us now and again.

Such a fault, under the stress of the forces outlined in paragraph two, will slip until it comes into equilibrium, and will remain in that condition, until reduced again to a state of instability by a series of earthquakes in other parts. The same causes then, which produce high tides and high winds, also produce earthquakes, but the latter are rarer; at least in the more catastrophic type.

That there are substantial grounds for the foregoing statements, will be adduced from the following records: as there are many astronomical happenings this year I venture to think that it will be notable in its weather.

March 1st, 1931. Mars and moon in conjunction. Barometer fell 3-10 of an inch here, on the 2nd, Britain was swept by a gale and much stock lost in snowdrifts. France and nearby coasts scourged. March 4th, sun and moon in opposition (full moon). Heavy fall of barometer. Wild storm here. No mail in our district. Gales 60 m. p. h. in N. S., and highest tide in 22 years; \$1,000,000 damage.

February 2nd, 1931. Mars and moon in conjunction; Feb. 4th, Venus and Saturn in conjunction. Heavy fall of barometer here between January 30 and February 2nd. February 2, 3 and 4, earthquake in New Zealand, the worst disaster ever known in that country. February 17th, sun and moon in conjunction, with heavy fall of barometer. February 20th, Mars and Jupiter in close proximity. Barometer fell for several days. Storms of February 23 and 24 cost the Island railways \$50,000.

January 4th, Jupiter and moon close, both being in opposition to the sun. January 6th, barometer fell 1 1/2 inches here, with snow rain and wind. Wind 40 m.p.h. in Halifax and tide 4 feet above high water mark. Typhoon at Manila, 80 killed, 50 missing. 8th earthquake in Quebec. January 14th, Mars and Jupiter still close—they have been in proximity a long time—earthquake in Mexico, 180 killed, gale 60 m. p. h. in Japan. Mukden, China and Siberia report intense cold.

December 28, 1930, Venus nearest earth, i. e., between earth and sun. Barometer fell almost an inch here with wind and drift.

November 6th, 1930, Sun and moon in opposition. Gale here with 1 1/2 inch fall of barometer. November 20th, Sun and moon in conjunction. Gales and rain damage countries round the British Channel, thousands of acres flooded. Earthquake in Japan. November 28th, Venus and moon in conjunction. Barometer fell for two days and heavy rain cleared the fields of snow here on the 31st.

One might carry these examples back for the last ten years, but sufficient has been said to show that the theory of planetary influence is not altogether visionary. I close then with one other instance: August 31st, 1930. Saturn and sun in opposition, tropical heat in Europe, 94 in the shade in Britain, where 40 die of storms in Ontario and Quebec. A funeral party struck by lightning at the graveside, at Lady-smith, P.Q., none killed and others

FEED

We are now offering the balance of our Feed at greatly reduced prices, consisting of

- BRAN
- SHORTS
- MIDDINGS
- OIL CAKE
- COTTON SEED
- SCHUMACHER FEED
- DAIRY FEED
- BEST PULP
- CORNMEAL
- CRACKED CORN
- FEED WHEAT

Also in stock all well known brands of Blend and Hard Wheat Flour—in bags and bbls., and Rolled Oats and Oatmeal, all of which we are selling at lowest prices.

Call or write for prices before buying.

A. Horne & Co.
WHOLESALE & RETAIL

3961-3-17-31tutsat.

tion, until reduced again to a state of instability by a series of earthquakes in other parts. The same causes then, which produce high tides and high winds, also produce earthquakes, but the latter are rarer; at least in the more catastrophic type.

That there are substantial grounds for the foregoing statements, will be adduced from the following records: as there are many astronomical happenings this year I venture to think that it will be notable in its weather.

March 1st, 1931. Mars and moon in conjunction. Barometer fell 3-10 of an inch here, on the 2nd, Britain was swept by a gale and much stock lost in snowdrifts. France and nearby coasts scourged. March 4th, sun and moon in opposition (full moon). Heavy fall of barometer. Wild storm here. No mail in our district. Gales 60 m. p. h. in N. S., and highest tide in 22 years; \$1,000,000 damage.

February 2nd, 1931. Mars and moon in conjunction; Feb. 4th, Venus and Saturn in conjunction. Heavy fall of barometer here between January 30 and February 2nd. February 2, 3 and 4, earthquake in New Zealand, the worst disaster ever known in that country. February 17th, sun and moon in conjunction, with heavy fall of barometer. February 20th, Mars and Jupiter in close proximity. Barometer fell for several days. Storms of February 23 and 24 cost the Island railways \$50,000.

January 4th, Jupiter and moon close, both being in opposition to the sun. January 6th, barometer fell 1 1/2 inches here, with snow rain and wind. Wind 40 m.p.h. in Halifax and tide 4 feet above high water mark. Typhoon at Manila, 80 killed, 50 missing. 8th earthquake in Quebec. January 14th, Mars and Jupiter still close—they have been in proximity a long time—earthquake in Mexico, 180 killed, gale 60 m. p. h. in Japan. Mukden, China and Siberia report intense cold.

December 28, 1930, Venus nearest earth, i. e., between earth and sun. Barometer fell almost an inch here with wind and drift.

November 6th, 1930, Sun and moon in opposition. Gale here with 1 1/2 inch fall of barometer. November 20th, Sun and moon in conjunction. Gales and rain damage countries round the British Channel, thousands of acres flooded. Earthquake in Japan. November 28th, Venus and moon in conjunction. Barometer fell for two days and heavy rain cleared the fields of snow here on the 31st.

One might carry these examples back for the last ten years, but sufficient has been said to show that the theory of planetary influence is not altogether visionary. I close then with one other instance: August 31st, 1930. Saturn and sun in opposition, tropical heat in Europe, 94 in the shade in Britain, where 40 die of storms in Ontario and Quebec. A funeral party struck by lightning at the graveside, at Lady-smith, P.Q., none killed and others

Such a fault, under the stress of the forces outlined in paragraph two, will slip until it comes into equilibrium, and will remain in that condition, until reduced again to a state of instability by a series of earthquakes in other parts. The same causes then, which produce high tides and high winds, also produce earthquakes, but the latter are rarer; at least in the more catastrophic type.

hurt. At Toronto, 1.73 inches of rain fell in 30 minutes.

It may be possible to indulge in long distance weather prognostication, when sufficient facts of the above description have accumulated, the difficulty will be to know where the particular brand of weather indicated is going to locate.

Plant Protectors

To those of us who are fond of gardening it is often a source of irritation to find our choicest plants, tomatoes, cabbages, dahlias and the like, cut down by the ubiquitous cut-worms. Here is a plan to circumvent them. With one of the new can-openers cut out the bottom of any old "can"—salmon or other—that you may have, thus reducing them to a cylinder open at both ends. Then hunt up your old can opener and with it slit this cylinder neatly round the middle. You will now have two cylinders, each half the height of the original. "Do it now!"

When the spring comes and your fancy lightly turns to planting out, slip one of these protectors over your cherished plant and press it lightly into the earth to give it stability. Some morning, long before you're astir, along comes the cut-worm, tries the cold metal, and turns sadly away.

These protectors will last for years if stored away from the weather, in the fall. Young plants grow all the better if protected in this manner, from the wind, another point in favor of the protector.

No Change

It is, of course, no new thing that the people of one generation should criticize those of another; should maybe recall the past with some regret and look for solace to the future. This always has been and will be the inclination in a world which has not yet attained perfection. Mr. Dwight Moody, the son of the evangelist, is reported to have discovered a clay tablet in Assyria which is fifteen thousand years old. When the inscriptions on it had been deciphered, this comment was revealed: "The world is going to the dogs. Children no longer obey their parents, and every man is writing a book."

The ancient inscriber of these sentiments doubtless looked back to some good old day, and prophesied to his intimates that the time to come would develop a world and give birth to a race that would put his present day to shame. It would appear, however, to be the same old world. The intervening fifteen thousand years more, dogs will still enjoy the same old diet and children will still persist in disobedience. Also, every man will have his say.

Husband And Wife Find Them Very Beneficial

Nova Scotia Lady Speaks Highly Of Dodd's Kidney Pills

Mrs. N. E. Conrad Used Them for Backache and Her Husband for Rheumatism

Cherry Hill, N. S., March 21.—(Special)—"I have used Dodd's Kidney Pills for pains in my back and Kidney trouble and I cannot praise them too highly," writes Mrs. N. E. Conrad, a well known resident of this place. "My husband also uses them for Rheumatism with excellent results. They will help anyone who suffers with their Kidneys."

The natural way to treat Rheumatism and Backache is to treat the Kidneys and the natural way to treat the Kidneys is to use Dodd's Kidney Pills. Rheumatism is caused by the presence of uric acid in the blood. If the Kidneys are doing their duty they will strain all the uric acid out of the blood and there can be no more Rheumatism. Therefore, put the Kidneys in shape to do their duty by using Dodd's Kidney Pills.

Don't delay—Delays are dangerous. If you suspect your Kidneys, act at once.

JUDGES PLAYING STOCK MARKET NOT IMPARTIAL

PHILADELPHIA, March 19.—Judges who play the stock market are poor judges. At least this is the opinion of Judge Leopold C. Glass of the Juvenile Court.

"When judges commence playing the stock market, trouble usually follows," the jurist declared. "When a judge looks in the morning paper and sees his stocks have taken an awful wallop, he can't be impartial because he is worried about his losses."

UPTON SCHOOL

The following is the standing of Upton School for the month of February:

- Grade IX.—Emma Taylor, 2, Jean Betton.
- Grade VIII.—1, Grave Betton, 2, Maud Taylor.
- Grade VII.—1, John Boston.

Superbly Styled

REMARKABLE PRICE SAVINGS FROM \$170 TO \$800

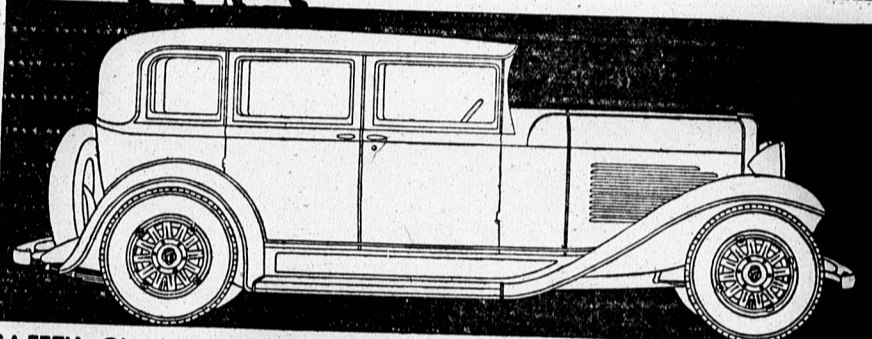
Your first glance at the new Willys Six will take in the car's graceful lines—low, sweeping and clean-cut—and its pleasing color harmony. In every detail, the car correctly interprets the latest fashion tendencies. In the new Willys Six the front seat adjusts to your length and its back takes the angle that fits you. The wider tread (58 1/4 inches) makes much roomier seats and bodies. There are longer, more flexible springs and four hydraulic shock absorbers of improved type. The double-drop frame cuts down side sway for greater security when taking corners.

The big powerful engine is smooth in operation and economical in consumption of gasoline and oil. It can drive 70 miles an hour—50 in second gear. It is rubber-insulated against vibration. The big four-wheel brakes are the Duo-Servo type, cable and conduit control, for better equalization, less pedal pressure and to avoid the brake rattles common to less modern systems.

Only a company of long experience, of large resources and with enormous facilities, could produce such outstanding cars as the new Willys Sixes, Eights and Knights, and market them at such low prices, which represent a saving of \$170 to \$800 over last year's similar models. Arrange for a demonstration.

New Low Prices Willys Six—\$650 to \$1,070. Willys Eight—\$1,170 to \$1,520. Willys C.113—(1 1/2 ton Chassis)—\$900. Willys C.131—(1 1/2 ton Chassis) Single Wheels—\$830. Dual Wheels—\$870. Willys-Knight—\$1,125. and Upwards All prices F.O.B. Factory, Toronto, Ont. Taxes Extra.

Willys Cars are Manufactured in Canada



SAFETY GLASS IS AVAILABLE IN ALL WINDOWS—ALL MODELS

The NEW WILLYS SIXES EIGHTS KNIGHTS

186 Grafton St.

P. J. Noy Hunter River

F. R. McLAINE

J. A. McNeil & Sons Summerside

Charlottetown C. E. Pratt & Son St. Peters

Grade V.—1, Gordon MacSwain, 2, Stirling MacLeod, 3, Harold Taylor. Grade IV.—1, Margaret Betton, 2, Charles Taylor. Grade III.—1, Roddie Betton. Grade II. Sr.—1, Mildred MacSwain. Grade II. Jr.—1, Otto Christensen, 2, Severd Christensen, 3, Oase Christensen. Grade I. Sr.—1, Florence MacSwain. Grade I. Jr.—John Christensen, Muriel Burdett, Teacher.

CHICKEN FEED CHANGES COAST

HARTFORD, Conn., Mar. 19.—Legislative committeemen, long used to using "chick feed" as a synonym for an insignificant amount, were startled to hear testimony that taking the apple crop. Testimony to this effect was introduced before the legislative appropriations committee by bee keepers, who advocated approval of a \$6,000 expenditure for further research in apiculture.

BEE'S AID APPLE CROP

HARTFORD, Conn., Mar. 19.—Beees, it seems, have a more important function than making honey and stinging the unwary; they help the apple crop. Testimony to this effect was introduced before the legislative appropriations committee by bee keepers, who advocated approval of a \$6,000 expenditure for further research in apiculture.

FERTILIZER! FERTILIZER!!

FARMERS:

You cannot offset the present low values of farm products except by decreasing the cost of production and by increasing your yields. Therefore, it is our duty to advocate the use of home mixed chemicals rather than factory mixed fertilizers, because of the saving of costs and the higher yields it means to you.

If you buy chemicals you can purchase the same amount of plant food at \$5.00 less than you will pay for a ton of mixed fertilizer, and have from three hundred to five hundred pounds less material to handle.

Home mixed chemicals generally give better yields than mixed fertilizer, particularly in a dry season. Last year one prominent grower planted one

hundred acres with mixed fertilizer, using 1800 lbs. of a 4-8-12 mixture per acre. He reports: "the mixed fertilizer cost me \$500.00 more than the chemicals would have cost, and based on the average yield I obtained with the home mixed chemicals during the same year I was short three thousand bushels of good potatoes."

Mr. Farmer, are you working for yourself, or for the manufacturer of mixed fertilizer?

This Association working solely in the interests of the farmer, advocates the purchase of chemicals, and home mixing. Manufacturers advocate mixed fertilizer. The choice is yours.

We can supply you with either or both. Write us for prices which are the lowest we ever issued.

P. E. I. POTATO GROWERS' ASSOCIATION
INCORPORATED

POTATOES AND TURNIPS

Growers of Potatoes (mountains) and Turnips who anticipate shipping their product on consignment to the Boston Market, should get in touch with our P. E. Island representative, F. R. Newsom, phone 431, Charlottetown, who will gladly submit full particulars.

Private wire connections. One of the largest, oldest and most reliable wholesale produce houses in the business. Car lots only.

"SUBSTANTIAL CASH ADVANCES MADE ON EVERY CAR SHIPPED ON CONSIGNMENT."

These shipments do not interfere with our regular weekly cash purchases.

NEWSOM & McLEOD,

Boston, Mass.



Even vile, healthy-appearing animals demand an occasional corrective for digestive disorders. The Rose-Miller Charcoal Biscuit remedies and wards off ailments of this sort. Clip this advertisement for free sample. ROSS-MILLER BISCUIT CO., LTD. Napasno, Ontario P. E. I. Distributors Braco, MacKay & Co. Ltd. Summerside

C. M. Lampson & Co. LIMITED. 84 Queen Street London, E. C. 4, England

Public Auction Sales OF RAW FURS Shipping bags will be furnished without charge by applying to E. T. Holman, Ltd., Summerside, P. E. I. Represented by Alfred Fraser, Inc. 212 Fifth Avenue New York, N. Y.

For Cramps Chills, Colds a New Brunswick Lady Has Made a Discovery

Rothsay, N.B., March 21.—For the benefit of many mothers who don't know just what to do when sudden ills overtake the children, Mrs. H. L. Carpenter gives good advice: "For the last three years," she states, "I have used Nerviline, and I find it a wonderful medicine. In our home we have used Nerviline for neuritis, colds, chills and cramps. In each case Nerviline has given wonderful relief. For my children I employ Nerviline for chills, colds and pain in the stomach. I live in the country, and find Nerviline a necessity to assist in overcoming the many small ills that constantly arise in the family."—Mrs. H. L. Carpenter.