

THE WESTERN GUARDIAN

HOTEL ARRIVALS

SHOP from Holman's Catalog.

TIGISH—Don't forget the Annual Parochial Picnic at Tigish July 26, 1922.

FARM FOR SALE consist of two hundred and twelve acres situated at Shamrock. Apply to D Owens, Kinkora.

COME TO MALPEQUE.—On Wednesday afternoon, July 19th, tea in hall beginning at 5 o'clock. Sacred concert in church at 7.30. Proceeds in aid of church funds.

WEDNESDAY AFTERNOON—July 19th. All roads lead to Mat peque.

KEEP THE DATE IN MIND—Wednesday, July 19th. Tea and entertainment at Malpeque. After noon and evening.

Ask for Minard's and Take no other

PERSONALS

Mrs. Wm. H. Church of Hart, Mich. is visiting her former home in Sherbrook.

Miss Kate Darby, returned from New York last week and will spend the summer at her home in St. Eleanor's.

Mr. and Mrs. Brewer, Clark, and Charles Clark, who have been visiting their former home in Summerside left on return to Cleveland, O., Friday.

Miss Maud, A. Chaisson, a Prince county girl living in Water town, Mass., has forwarded to Mr. J. J. Morris, treasurer of the Soldiers Monument Committee, Summerside a check for \$75.00 as her subscription to the Monument now standing in Dominion Square.

Others' View Points

(Continued from Page 4)

ever had the opportunity of handling, and he is also one of the truest to his work. He never gives out, it does not matter what he is at. If it is on the road he travels along forever, and if he has a load behind him he will tug at it until he moves it. He never balks, and children can handle him with the greatest safety. In every way he is docile and kindly.

An opportunity has arisen to commence the work of perpetrating and improving the breed on a co-operative basis, as the French-Canadian Horse Breeders' Association has turned over to the Federal Department of Agriculture for a period of twenty years a farm having some 500 acres under cultivation. The farm is located at St. Joachim, less than 25 miles east of Quebec city, on a good macadamized road and near a trolley station. It is planned to conduct this as a horse farm, under the direct supervision of the Superintendent of the Cap Rouge Station. Some thirty mares were bought, and these, together with about fifteen of the best mares at Cap Rouge, form the foundation stock from which it is hoped to regenerate the breed.

WHEN USING WILSON'S FLY PADS READ DIRECTIONS CAREFULLY AND FOLLOW THEM EXACTLY. Best of all Fly Killers 10c per Packet at all Druggists, Grocers and General Stores

"The Well Diggers Locate at KENSINGTON"

"Our reputation for getting the Water, no failures in three years operations, has brought us in such an increase of business that we have decided to locate permanently at Kensington, P. E. I. In future address all inquiries to the undersigned.

THE TRASK WELL CO. E. TRASK, Prop. Kensington, P. E. I.

FOR SALE.—My business in Kensington, groceries, confectioneries, tobaccos full line of beverage drinks, newly equipped soda fountain, ice-cream parlor effects and accompanying fixtures; kitchen utensils. Ralph Balderson

Summerside baseball fans are in for a treat tonight, (Monday), when the Boston Baseball team will play the local team on the school grounds. The Boston team has been touring the Maritime Provinces, playing the best teams in the various towns, also playing Charlottetown last week. No doubt a large attendance will be on hand to witness this game.

Keep Minard's Liniment in the house

A MASTER OF WORDS

It's too bad of the Earl of Balfour! When he sprang "terminological inexactitude" upon the world we forgave him, as we have forgiven him for other similar sins. But the other day he referred, in a political speech, to the Pacific Ocean and its "limitrophe continents." His "limitrophe" contents. His "limitrophe" were stumped. Some of those present thought he meant that the continents were the limit. Others believed that some contagious disease was raging on the Pacific coasts. But "limitrophe" only meant "bordering" and why Lord Balfour couldn't have said so is a mystery. A reporter was once asked how the newly-created word spoke. "He speaks quite rapidly," replied the reporter. "About twenty words a minute." "But that is not fast!" said the inquirer. "Yes it is—when the words are Balfour's."

PLANTS THAT FOLLOW THE SUN.

At this time of the year runner beans and many other climbing plants are making their way up the poles that support them. If you examine them you will find that those which climb by twining always twist in the same direction.

The hop and the honeysuckle turn from left to right. The reason for this is that the sun moves in the same direction and the plants follow him. The side of the shoot which is turned towards the sun grows faster than that which is in the shadow, and the result is that the stalk is forced into a clockwise curve.

The runner bean, however, and many other plants, twist in the opposite direction. At first sight you might think that this disproved the explanation given above; but in reality it does not. Plants of this kind are affected differently by strong light and the heat of the sun. In their case, the side of the shoot which faces the sun shrinks a little under the heat and warps the whole stalk into an anti-clockwise curve.

STANDARDS FOR WOLFE'S MONUMENT

The action of the Toronto District and York County Command, F.W.V.A., and Ladies' Auxiliary, in preparing and taking to England two standards to be placed on Wolfe's Monument in Westminster Abbey in perpetuation of the idea popularized during the war by the immortal fighting battalion flags deposited there, has touched a responsive cord among ex-service men of Canada generally.

There were very few men serving in the C.E.F., who did not make a special effort to see Canada's corner of the spiritual heart of the Empire during the progress of the conflict. They felt that the tomb of Canada's first great military leader of British birth, thus adorned was an inseparable link binding the Dominion to the Empire. When it became necessary for the various units to remove their colors, citizens of both the Old Country and the Dominion alike looked upon it somewhat in the light of calamity. Bishop Ryle, Dean of Westminster Abbey, voiced this feeling some two years ago when he expressed the earnest hope that the Dominion would furnish colors to adorn the monument for posterity. To the Toronto District and York County Command, F.W.V.A., and its Ladies' Auxiliary, is extended the unstinted commendation of Canadian ex-service men in re-establishing this great symbol of national unity.

ABOUT OMELETTES

Any cooked meat, liver, poultry, fish, or game, finely minced and mixed with a little rather thick sauce, may be put into the centre of an omelette before folding it. The filling mixture must be warmed in another pan before mixing the omelette.

Cooked vegetables chopped finely and warmed in butter or a little sauce or cream, may be used for filling.

Savoury omelette is made by adding chopped herbs with parsley. When making a sweet omelette, omit the pepper and use less salt. Put a tablespoonful of warmed jam on to the omelette before folding it, and if liked, add a teaspoonful of sugar to the eggs when beating them.

Forgoing a Thrill.

"I am now in communication with Cleopatra," said the medium, dreamily. "Does anybody wish to converse with Cleopatra?" "Gosh, I'd like to!" exclaimed a little man in the rear of the darkened room, "but the minute I got home my wife would know I'd been up to something."

VICTORIA HOTEL

G. E. Carter, St. John; Miss Ida Merrill, Malden, Mass.; R. M. Backadar, W. H. Teas, Halifax; Alex Campbell and wife, Summerside; J. A. Campbell, Summerside; W. R. Tinney, Charlottetown; R. M. Millett, Dartmouth; J. O. Notman, Montreal; H. J. Campbell, Truro; J. H. Webster, Moncton; E. J. Warner, Dartmouth; F. L. Whalen, Boston; Mr. and Mrs. E. D. Johnson, Springfield, Mass.; Mrs. (Dr.) Dunn, Pictou; Mrs. J. C. B. Olin, Truro; Mr. and Mrs. A. J. Mann, Halifax; Mrs. Mars, Penticton, B. C.; Miss Bell, Vancouver, B. C.; Miss Edith L. Newman, Mrs. B. F. Newman, Augusta, Me.; Rev. H. J. McKenna, Gertrude Curran, St. Teresas; J. G. MacLellan, Brooklyn, Mass.; R. E. McCullough, Washington, D. C.; J. H. Wason, Montreal; J. McCouchie, New Glasgow; E. W. Manson, Summerside; Mrs. Miles Martin, Boston; A. C. Saunders and family, Summerside; B. M. Blackier, W. H. Teas, J. P. James, Halifax; A. M. Harmon, St. John; Mrs. Laing and children, Simcoe, Ont.; E. S. Hopkins, D. S. Cameron, Ottawa; W. L. Brenton, London, N. S.; Robert C. Doyle, Amherst; G. MacKay, Moncton; Jas. Ross, Halifax; C. W. Speirs, Toronto; F. J. E. Wright, Summerside; Mrs. G. R. MacLeod, Miss Eliz. MacLeod, Montreal; A. H. Dupont, Phila. Pa.; F. V. Calhoun and family, Gaspé; L. L. Parkman, P. MacIntyre, M. D. Montague; John Fixter, Ottawa; C. A. Archibald, Truro, N. S.; Sydney Wolfe, Liverpool, N. S.; W. G. Graham, E. M. MacLeod, Halifax; G. C. Meekie, F. C. Meekie, Halifax; W. A. Creelman and wife, Truro; Mrs. Marshall, Miss Patterson, Miss E. Creelman, Truro; N. G. Church, J. E. Milligan, Summerside; J. I. Brody, Montreal; E. A. MacAdam, Boston; C. A. Meekie, Summerside; E. B. MacQuarrie, New York; M. C. Dunne, New Haven, Conn.

REVERE HOTEL

R. K. Hays, C. R. Hays, Chicago; L. B. Keith, Jas. Summers, Springfield, Mass.; W. Calkin, Geo. D. Summers, Springfield, Mass.; R. O. Buggs, Springfield, Mass.; C. Atkinson, London; J. W. Pitt, T. B. DeRoche, Emerald; C. Graham, Winslow; Annie Redmond Vernon; I. McIver, Kinkora; Mr. and Mrs. G. W. Dawson, Cape Traverse; Miss Ida Dawson, North Tron; H. J. Larkin, Alberton; J. S. Dixon, Pictou; P. Walker, Halifax; H. E. Fulman, Mt. Stewart; E. Howat, French River; J. D. Legger, Moncton; W. D. MacNeill, Summerside; Ira W. McLeod, French River; John Russel, New Castle; F. G. Fawkes, Brantford, Ont.; W. H. Whiston, Halifax; Mrs. Ethel Poirier, Halifax; L. T. Jardine, C. M. Davidson, Campbellton; C. C. Dingwall, South Lake; S. Davidson, Moncton; J. P. Hughes, Drummondville, Que.; Thos. Wark, Coburg, Ont.; E. B. Boswell, Elmer Brown, New York; Frank Simpson, Hamilton; Marjorie McPherson, Flat River; Eliz. McPherson, Eliz. Ross, Flat River; Martin A. Doyle, Tignish; Mrs. C. R. McKay, L. McKay, A. A. McKay, Bridgetown; Rev. Wm. McGowan, Bridgetown; Mrs. P. W. Welsh, Summerside; Clara Welsh, West Newton, Mass.; J. W. Whelan, Alberton; F. L. Keenan, St. John; J. W. Currie, Peakes; E. F. Best Simcoe; E. M. Dewar, Alton, Mass.; D. Matheson, Boston; O. L. Lewis, Ottawa.

QUEEN HOTEL

W. R. Oulton and wife, Alberton; Mrs. A. L. Purdy, Miss Wells, Alberton; R. A. MacLeod, Ulg; J. B. Grant, Miscouche; Mrs. J. W. Whelan, Alberta; J. J. Smith, E. Ryan, C. Flaherty, H. Toomey, D. Geary, L. Cohen, W. Gorneau, B. Phillips, A. Winsor, R. Pontoni, B. Smith, Boston Baseball Team; F. Sigsworth, City; W. H. McLean, Crapaud.

HARSTVILLE SCHOOL

The semi-annual examination of Harstville School was held on the afternoon of Wednesday, June 28th in the presence of a large number of parents and rate payers. The pupils were examined in the various subjects by their teacher, Miss Margaret Clarkin, ably assisted by Miss Jeanette Coady, the teacher of Green Bay School and others and proved by their ready and correct answers that they had been carefully instructed by their earnest and capable teacher. After the examination a very pleasing programme was rendered by the pupils consisting of recitations, dialogues and songs. This was followed by the presenting of prizes by the teacher to the following pupils: Highest standing in 4th, Class, Senior, won by Wilfred Murray. Prize for Department, Christie Nicholson. Prize for Department, Janie Nicholson. Highest standing in 3rd, Class Junior won by Eugene Murray. Highest standing in 2nd, Class won by Peter Nicholson. Highest standing in 1st, Class won by Katie McLeod. Highest standing in Primer Class won by Elmer McLeod. Prize for best pupil in Oral Arithmetic won by Donald Nicholson.

After the awarding of the prizes the pupils presented the teacher with an address accompanied by a sum of money. The teacher, Miss Clarkin, although taken by surprise made a neat and fitting reply in which she thanked the pupils and people for the many kindnesses shown her during her term as teacher in the school. Favorable remarks were then made by the Trustees and rate payers, and the conclusion of which candy was served to all present. The singing of the National Anthem brought to a close one of the most successful examinations ever held in Harstville.

DOCTOR'S ORDERS

That charming young actress, Beatrice Lillie, who is at present "starring" in "Pot Luck" at the London Vaudeville, is as lively off the stage as on, and her stock of stories must be one of the largest in London.

One of them is of a preacher who found a negro prowling round his barns one night. "This won't do you any good," he said. "You ought not to be out in the cold." "Doctor's orders, sah," said the old man. "Do you mean to tell me that the doctor ordered you to prow round my barn at night?" "Not exactly sah. But he ordered me chicken broth."

GOING TO MOVE A RIVER

Chicago, which conquers in the sign "we will now contemplate picking up a river which is in her way and carrying it out west where she wants it; not very far west—only a few city blocks—but the job will cost about \$6,000,000 and that is only one item in the complicated and costly undertaking by which 1,764 of the city's area, where more than twenty railroads handle every day 112,000 tons of freight and 200,000 passengers, must be unmanoeuvred from congestion. Drays clog the streets, commuters through the ways, and the downtown region has still to build up from an average of eight story structures to the present maximum of twenty stories with a day-time population and traffic corresponding. The city has envisaged the dreams of past boosters. Engineers are now asked to provide for the future. Chicago's appetite for freight cannot be curbed by dieting. Her daily meal will keep on growing. She needs new digestive apparatus. Transference of the river and certain other capital operations will give it to her. Freight wise she must begin life over again.

What is true of Chicago is true in one way or another of most of the principal cities of the country.—John Findley Wallace in Leslie's.

CHESTERFIELD HOUSE

The ball room at Chesterfield House, where Princess Mary will give a series of dances during the London season, was formed by converting two drawing rooms into one spacious apartment. This has recently been thoroughly redecorated and now forms one of the most handsome apartments of its kind to be found in London. It will hold a considerable number of dancers, while there is ample accommodation for supper in the adjoining apartments. The princess has always had a great liking for dancing, and it is understood that young people will be in the great majority at the dances she has planned at her town house.

A MIRAGE ON THE SIDEWALK

Mirages are not confined to the sea and the desert. Writing in Science Dr. F. W. McNair describes one that he saw on the sidewalk in a city. "I was walking eastward on a cement sidewalk on a street running nearly east and west, and moving up a moderate grade that joins a nearly level stretch of walk. On reaching a point that brought my eye slightly above the level portion and at which normally the level stretch would have been seen in its entire length, but much shortened, I observed instead what appeared to be a stretch of clear dark water covering the entire width of the walk and brilliantly reflecting moving persons and other objects in sight beyond it. "The sky was clear, the air cool, the sun high. It was about 3 p. m. local time. There was a moderate breeze. The angle of observation was very small, probably not above three degrees. A step or two either east or west, and the water was gone, but within the proper limits the illusion was definite and continuing. The Weather Bureau report for the day indicates that approximately thirty feet above the spot where the mirage was observed the air temperature was about 60 degrees Fahrenheit and the humidity about 63 per cent."

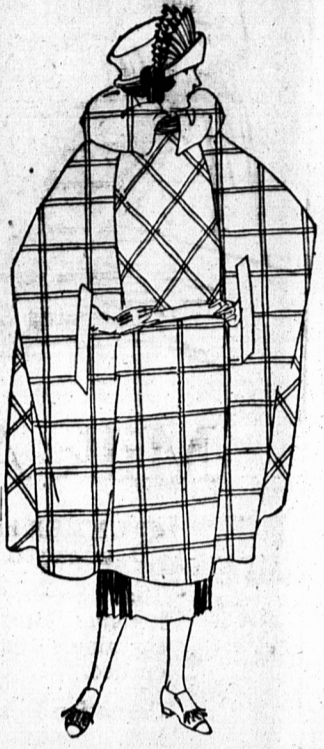
STRANGE PARTNERSHIPS

Animals not only associate with each other, but they sometimes form strange partnerships and mutual aid societies. Mr. Ernest Ingersoll, in his recently published "The Wit of the World" gives an instance of a strange partnership between a flock of starrings and the rhinoceros. "An animal stupid, short-sighted, and easily approached from any direction that does not carry a warning scent to its sensitive nostrils." But the rhinoceros feeds and sleeps in peace under the watchful care of a flock of starrings, who flutter about him or run up and down his back picking off the various ticks and grubs that would keep him itching or perhaps work real harm, and which to them are excellent morsels. Moreover, they are supernaturally keen as watchmen, as hunters well know for many a fine rhino, says Mr. Ingersoll has got away because the rhinoceros-birds made haste to wake their patron by pecking at his head and screaming in his dull ears until he took warning.

JULY CLEARANCE

Monday, July 17th Continues The July Clearance sale of ladies ready-to-wear goods. There will be offered the most attractive range of suits, blouses and dresses in Charlottetown. The newness of the garments, their perfection of style will have added the attraction of GREATLY REDUCED PRICES

Some of the lines shown are further specified in the remainder of this advertisement. Read it—come early—it is to your profit.



One third Off New Coats

You have seen these coats—you know that there is no line so new—so smart—so attractive to be had in P. E. I. as these. And now—while they are NEW—while there is plenty of wearing time for them—they are

REDUCED ONE THIRD

Polo Coats—Navy and Black Tricotine Coats—Misses' and Children's Coats.

You Can Choose from these lovely Dresses at one quarter off

There are dainty dresses of Canton Crepe—of Crepe de Chene—of Silks and Serges and Tricotines. These dresses are beautifully made—they are tastefully finished, they are attractive in every way.

Saturday morning you can choose from among them at

25 PER CENT. OFF

One third off Middy Blouses One third off Skirts 25 per cent off 25 per cent off House Dresses Blouses

25 per cent off Ladies' and Children's Rain Coats

Sale for Cash Only

MOORE & McLEOD LTD. 119-121 Queen St. Charlottetown

Serge and Tricotine Suits

one third off

This assortment of lovely suits in many good styles—new models, beautifully made garments.

ONE THIRD OFF

\$20.00 Suits at \$13.33 \$25.00 Suits at \$16.67 \$30.00 Suits at \$20.00



Sale for Cash Only

We own and offer, subject to prior sale \$50,000 City of Charlottetown, P. E. I. 5 1/2 per cent 20-year Bonds. Due 1st July, 1942 Interest payable 1st January and 1st July at Charlottetown, P. E. I. St. John's, N. B. Montreal, Que. Halifax, N. S. Price 101.52 and accrued interest to yield 5 1/2 per cent. Further particulars on request. JOHNSTON AND WARD Members: Montreal Stock Exchange—Toronto Stock Exchange 171 St. James St., Montreal Moncton Direct Wire Connections Sydney, N. S. St. John's, Nfld.

Great Slaughter Sale OF GOODS SLIGHTLY DAMAGED BY FIRE AND WATER Beginning Monday, July 17th. and Ending July 24th. We will sell our stock of Dry Goods, Boots and Shoes, etc., at GREATLY REDUCED PRICES Emerald Co-Op. Farmers Ltd.

CASTORIA For Infants and Children IN USE FOR OVER 30 YEARS Always bears the Signature of Dr. J. C. Watson