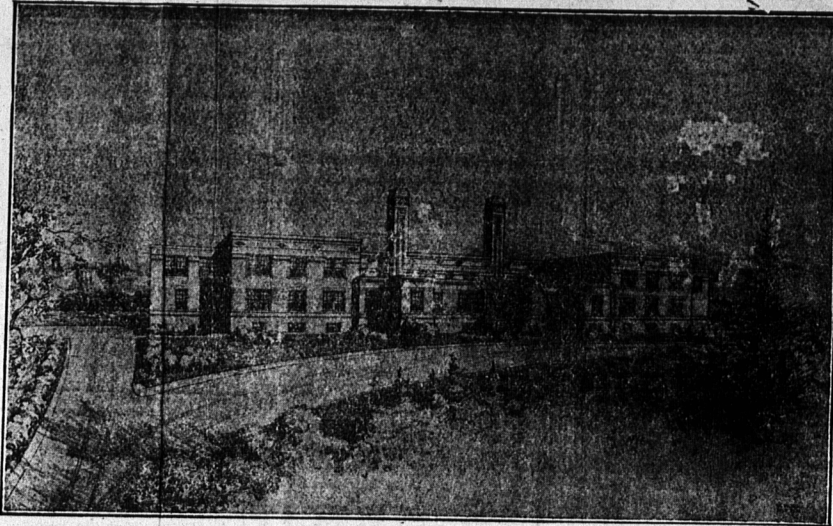


PRINCE EDWARD ISLAND HOSPITAL

**Program 'Arranged'
For Formal Opening**
*New Hospital Equipped In Most Modern Fashion Will
Accommodate 104 Patients*

Open For Inspection Today



Continued on Page 5)

The new Prince Edward Island Hospital which is today to be dedicated, and formally opened to the public is located on the south side of Brighton Road, opposite Greenfield Avenue. As the erection of the building was the outgrowth of the necessity for greater hospital accommodation, and more up to date equipment than was available in the old hospital, the new institution has been built to house comfortably 104 patients and possesses all the appointments which one would expect to find in the most modern hospital. Convenience in the arrangement of the various departments in relation to one another, the endeavour to make the interior finishing as home-like and pleasing as possible, the addition here and there of the unexpected detail on which often depends the matters of absolute comfort, and unqualified satisfaction for doctors, nurses, and patients, are everywhere noticeable. The location of the building indicated that similar principles governed the committee in its choice of a site.

A close-up view of the exterior is necessary to a proper appreciation of the new hospital. The building is low, two storeys in height with a lower floor slightly below the ground level, and is rectangular in shape. The material used in exterior construction is buff laprairie tapistry brick, interspersed with black headers, and Wallace sandstone trim. Two ventilating towers with a smoke-stack in one are symmetrically arranged near the centre of the building. The windows, which are nullioned, admit an abundance of natural light, are equipped with counter-balanced silding sashes, and have three thicknesses of glass in each for protection against cold and heat.

The concrete driveway branches to the left, to the ambulance entrance at the east end of the building, and to the right, to the delivery entrance at the west end. A transverse drive connects the two branches, leaving a circular lawn area in the centre, and meets the sidewalk leading to the main entrance.

Provision has been made for a large lawn area, as the hospital is 240 feet from the street. It is planned to plant shrubbery and flower beds in front of the building in the near future. Two light standards are located near the street and one in the lawn area. There is also a hydrant to the building, for fire protection.

The lobby to which access is given by the main entrance has walnut coloured wainscoting, and terrazzo and asphalt, tile floor. To the left of the lobby are the general and the superintendent's offices, in the former of which is located the interchangeable switchboard for housephones. To the right are the spacious reception rooms, with the Carruthers Library adjoining.

Running east from the offices is the doctor's corridor. On the right is the doctor's locker room, nurses work room, anaesthetic room, and X-ray viewing room. On the north side of the corridor are the two main operating rooms with grey-green walls of tile and plaster, glass instrument cases and metal saline cabinets. The rooms are lighted with powerful concentrated lamps.

The doctors' scrub-up sinks are located in the corridor. Adjoining the operating rooms is the utility room in which will be available hot and cold sterile waters, and instrument and utensil sterilizers. In the nurses work room are three large sterilizers, and other necessary equipment. Adjoining is a second operating room for fractures and minor operations.

At the east end of the doctors' corridor adjacent to the ambulance entrance and doctors entrance is the emergency operating room, the interns room and stretcher space.

is the special diet kitchen, equipped with electric stoves, refrigerator and tray rack.

The kitchen is lighted by skylights immediately over the major parts of the machinery.

The main refrigerator room is located off the kitchen passage in the front of the building and toward the west end. Here is a large mechanical general refrigerator, operated by the brine system, meat refrigerator and a large storage pantry.

Adjacent to the kitchen are the dining rooms for the nurses, the staff, and the help. Next is the nurses and housekeepers sitting room and office. Beyond there, off the kitchen corridor, are the delivery entrance, the service entrance and the freight hoist.

Immediately south of the lobby is the dispensary, a room for visiting nurses, and centrally located, the elevator hall. The latter gives access to the elevators, and to the private rooms, and contains the nurses station.

From the elevator hall the main corridor runs east and west through the centre of the building. On the south side of the corridor are fourteen private and four semi-private rooms.

In the north side are utility rooms, baths, toilets, etc.

Second Floor
At the south-east corner on the second floor is the nursery, babies bath, utility room, isolation section, and other necessary departments. This section has a corridor of its own and is shut off from the remainder of the building by glass separating doors. The nursery is a particularly bright and cheery room, and has special coloured linoleum on the floor.

In the north-east corner is the maternity section, which has terrazzo floors and tile walls. It is a complete unit in itself, and is also cut off from the main corridor. The section has a labour room and two delivery rooms. The adjoining utility room has the latest equipment, latest sterilizers and hot and cold sterile water.

In the nurses work room is a large dressing sterilizer and hence it will not be necessary for nurses working in this department to go to the first floor. The general colour scheme is light cream and buff.

Immediately adjacent to the maternity section are two four bed wards.

The main corridor on the second floor corresponds in position to that on the first, and gives access to twelve private rooms, three semi-

private rooms, two three-bed wards, two boys and girls wards with three beds each, a visiting nurses' double room, bathrooms and toilets. There are four four-bed wards at the west end, and also two three-bed wards or sun rooms, a diet kitchen, and a nurses work room.

The rooms and wards are spacious and well-lighted, and are finished in four different colours, two shades of green, gray, and beige. The bed

IT'S THE RECORD THAT COUNTS
Some of the Jobs Done in the MARITIMES—

NEW BANK OF NOVA SCOTIA, Halifax, N. S.	NURSES HOME Amherst, N. S.
KING'S UNIVERSITY Halifax, N. S.	ADDITION TO THE PINES Digby, N. S.
INFECTIOUS DISEASE HOSPITAL Halifax, N. S.	KING'S COLLEGIATE SCHOOL, Windsor, N. S.
SHUBENACADIE INDIAN SCHOOL, Shubenacadie, N. S.	UNION STATION St. John, N. B.
AMHERST HOSPITAL Amherst, N. S.	PRINCE EDWARD ISLAND HOSPITAL Charlottetown, P. E. I.

Awarded Contract for New Falconwood Hospital.
ALL FURRING, LATHING, STUCCO, PLASTERING AND
ORNAMENTAL WORK DONE BY—
J. J. CAMPBELL
PLASTERING CONTRACTOR

Jas. E. Harris
Associate Architect
for the
**Prince Edward
Island Hospital**
Hughes Building

BRUCE STEWART & CO.
LIMITED
Installed the
Plumbing, Heating, Ventilation Systems
In the New
Prince Edward Island Hospital

**MOTORS,
ELECTRICAL WIRING
&
FIXTURES**
Installed By
**Palmer Electric
Limited**
Electrical Contractors
173 GRAFTON ST.,
Charlottetown, P. E. I.
Phone 55. P. O. Box 503.

The Prince Edward Island Hospital
HAS BEEN
"HERMETICALLY SEALED"
AGAINST
COLD, DRAFTS and DUST
—BY—
CHAMBERLIN METAL WEATHERSTRIPS
Installed and Serviced by
EDWIN H. COOK
CHARLOTTETOWN
R. R. 6
Caulking Compound Jobs a Specialty.

**A. F. BYERS
& COMPANY, LIMITED**
ENGINEERS and CONTRACTOR
1226 University Street
MONTREAL, QUE.
A. F. BYERS, President
NORMAN STEWART, Sec. Treas.

Simon P. Paoli Simon P. Paoli, Jr.
L. M. POOLE & CO.
Paoli's Wharves
Charlottetown, Prince Edward Island
—DEALERS IN—
Pine, Spruce and Hemlock Boards,
Planks, Studding, Laths, Scantling,
Palings, Shingles, Flooring, Sheathing,
Cedar Posts, Fencing, Bricks,
Lime, Beaver Board, Etc.

**LINOLEUM FITTING
and FINISHING**
at the
**NEW PRINCE EDWARD ISLAND
HOSPITAL**
was done by
HEMPHILL & CUDMORE
Furniture Repairs & Upholsters
219 Kent St. Phone 644.

Distributors of **YALE** Locks & Hardware
ALL FINISHED HARDWARE
of "YALE" make
WAS SUPPLIED TO THE
**NEW
PRINCE EDWARD ISLAND
HOSPITAL**
—BY—
**The ROGERS HARDWARE
CO., LTD.**