

TWO GODS

The following article by Chauncey Depew is particularly applicable to day in view of the Kaiser's speeches the past few days:
"The God of battles is appealed to daily by the contending hosts, but there are two Gods. The poet Heinrich Heine, in the famous prophecy eighty years ago, said that Germany would resurrect from their graves the stone gods of their ancestors and the hammer of Thor would smash the weakness represented by Christian cathedrals. When the commander of the U-boat which sank the Lusitania and drowned its passengers, when the commander of the U-boat summoned to his deck the survivors of the Belgian Prince, and then submerging hilariously, leaving them in the ocean, both were praised and decorated with the Iron Cross, and their acts were proclaimed as proofs of God's help; when Belgium suffered unpeopled horrors, when the villages of Northern France were destroyed, their orchards cut down, their men killed, their women outraged and deported into slavery, it was claimed, that all this was done by the help of God and in partnership with Him, that God was again the stone God of the German forests. When the other day the British army captured Jerusalem, and after a lapse of six centuries brought the sacred places under Christian rule; when they sacrificed thousands of lives to win by the bayonet rather than the shell, which would desecrate hallowed temples and tombs, they restored to the world the spot where Christ died for the brotherhood of man. The Christ, whose doctrine uplifting the world for two thousand years has given to us all the blessings which we enjoy, it is that God under whose banner of the Cross we fight, under whom we are united, and with whose blessings we will win."

BIRTHS

GARNHUM—Very suddenly at the home of her grandparents, Mr. and Mrs. Murdoch McLean, Georgetown on May 21st, Emma Garnhum, aged six, daughter of Mr. and Mrs. Noah Garnhum.

MARRIAGES

DYMENT-EASTER—At the house of Mr. and Mrs. J. H. Murray, May 29th by Rev. Robert Murray, Mr. John Clifford Dymont and Miss Alice, daughter of Mr. Archibald Easter, of Knutsford.

Minard's Liniment Lumbermen's Friend

FOR SALE

Or trade for working horse—Colonel Sam, foaled 1914 by Sablewood, Dam Tully Bird, bred by W. G. Church, Lytleford, N. S. Apply to, PHILLIP GALLANT, Summerside. 4971-5-23M1wk.

For Sale

Schr. Stella, 15 tons, newly topped. Fitted with 15 H. P. Mianus Engine. Working on 15 H. P. Mianus Engine. In good running condition will sell cheap or trade small for our requirements. Apply, WM. LESLIE & CO., Grand Entry, Magdalen Islands. 4978-5-14M2wks.

Dissolution of Partnership

Charlotte, May 6, 1918 To whom it may concern. This is to certify that the partnership existing between the undersigned under the name of "Leigh & Fitzgerald" has been this day dissolved by mutual consent. All persons owing this firm will please make payment to the undersigned, Geoffrey Fitzgerald, who will also pay all his claims against the firm, he being hereby authorized to close the firm's business, and all contracts entered into by it. Dated this day May 6th A. D. 1918. A. E. LEIGH G. D. FITZGERALD

NOTE—The business will be carried on by the undersigned G. D. Fitzgerald. 6033-5-23M31.

Mail Contract

SEALED TENDERS addressed to the Postmaster General, will be received at Ottawa until Noon, on Friday, the 5th July 1918 for the conveyance of His Majesty's Mails, on a proposed Contract for four years, six times per week each way, between Iris Post Office and Hopefield Railway Station from the 1st October next. Printed notices containing further information as to conditions of proposed Contract may be seen and blank forms of Tender may be obtained at the Post Offices of Iris, Hopefield and at the office of the Post Office Inspector.

JOHN F. WHEAR Post Office Inspector Charlotte, 22nd May 1918. 6065-5-27M31.

DUNHOLM 2.05 1-4

Can. No. 538 American No. 48769 Will make the season Tuesday and Friday at P. Hughes' stable, Charlotte, except Fridays 31st May and 14th June and 28 June, when he will be in Kensington at Tyndale Semple's stables arriving there Thursday noon remaining till Friday noon will leave Charlotte on Friday 24th at 2 o'clock for Tho. Gleason, Cherry Valley, stopping at W. Lawton's, Pownal from 4 till 5 o'clock arriving at Theo. Gleason's at 6 where he will stay till noon Saturday, returning by Pownal at W. Lawton's from 2 to 3 o'clock. This route will be continued fortnightly.

For further information apply to D. W. WHITE York Point 6016-5-23wfm2wks.

Commodore Ledyard No. 34709

ENROLLMENT No. 11 Will make the season 1918 at the owner's stable Montague, Terms:—Five dollars a time of first service and ten dollars additional when mare proves in foal. Commodore Ledyard foaled in 1901 was sired by Admiral Dewey the son of Bingen and Nancy Hanks. Commodore's dam was Lady Elyse by Jackdaw. Hence, it will be seen that no horse stands higher in point of breeding. As a sire, he stands without peer in the Maritime Provinces. In fact he has produced more race horses than all the other stallions confined standing for service today on P. E. Island. He is the sire of Bob Mac, 2374, Hilda S, 216, Orwell Belle, 219, Iona Girl, 217, Rex Light 2174, and 19 others in the 230 list, besides a host of others that have trotted in better time than standard time but were successful in having their time suppressed. Commodore is now 17 years old and was never in such good condition as at the present time. He is at the age at which all great sires have transmitted their greatest number of trotters, as it is an unquestionable fact that our greatest sires beget more speed between 15 years and 22 years than they do before that age. Anyone owning a like mare that wishes to get a colt with speed or a superb driver will run less risk of failure by breeding to Commodore than in using those unproved sires that are the reputation to their owners' ability as boosters.

ELLIS' PHARMACY LTD. 6026-5-11M1.

MAYOR TODD, 2.15 1-2

MAYOR TODD, 2.15, needs no introduction to the horse breeders of P. E. I., his breeding is of the highest, coming from the Bingen family on his sire's side and the Alcyon and McKinney family on the dam's side. As a trotter nothing need be said. Those who saw him race can testify to his ability to trot; his colts—all have some speed, and there are a few youngsters that can trot fast. His colts have won more prizes in recent Exhibitions than the get of any other Standard Bred Stallion on P. E. I. He will make the season on the following route in charge of the veteran John O'Brien, Bonshaw. Leave Ch'town Monday morning, May 29, to Angus Cameron's, at noon; then to Neil McKenzie's, Canoe Cove, for supper; then to John O'Brien's, where he will stand till Wednesday morning, May 22, leaving there for Patrick Hogan's, Westmoreland, at noon; then to Newton Dawson's, over night; leaving there Thursday morning, May 23, to Harry Muttart's, Mans, noon; Daniel McPhee's, Long Creek, over night; Wednesday 24th, to Donald McLean's, noon; John O'Brien's, Bonshaw, over night; Thursday, 9th, Allan Ferguson's, Hampton, at noon, Matthew Callbeck's, Trvon, over night; Friday, 10th, to Artemas Cameron's, Augustine Cove, at noon; Harry Muttart, Cape Traverse, over night; Saturday, 11th, Thomas Hammel's, noon, Aeneas Murray's, where he will remain till Monday, May 13th, noon; to George Cahill's, Beque, over night; Tuesday, 14th, to Roy Burns, Lower Freetown; noon; to John Trainor's, Kinkora, over night; Wednesday, 15th, to Bradalbane at noon, Robert Bagnall, Hazel Grove, over night; Thursday, 16th, Wilfred Drummond at noon, then to owner's stables over night; Friday, 17th, at Francis W. Hughes, Grafton St., then at owner's stable till Monday, 20th, noon.

The above route will be continued every two weeks, health and weather permitting. Terms and conditions by applying to Aeneas Murray, in charge. James F. Roper, Hammond Kelly, Owners. Mares at owners' risk. 6077-5-27M1w 5084-5-20M1wk

Leave Ch'town Monday morning, May 29, to Angus Cameron's, at noon; then to Neil McKenzie's, Canoe Cove, for supper; then to John O'Brien's, where he will stand till Wednesday morning, May 22, leaving there for Patrick Hogan's, Westmoreland, at noon; then to Newton Dawson's, over night; leaving there Thursday morning, May 23, to Harry Muttart's, Mans, noon; Daniel McPhee's, Long Creek, over night; Wednesday 24th, to Donald McLean's, noon; John O'Brien's, Bonshaw, over night; Thursday, 9th, Allan Ferguson's, Hampton, at noon, Matthew Callbeck's, Trvon, over night; Friday, 10th, to Artemas Cameron's, Augustine Cove, at noon; Harry Muttart, Cape Traverse, over night; Saturday, 11th, Thomas Hammel's, noon, Aeneas Murray's, where he will remain till Monday, May 13th, noon; to George Cahill's, Beque, over night; Tuesday, 14th, to Roy Burns, Lower Freetown; noon; to John Trainor's, Kinkora, over night; Wednesday, 15th, to Bradalbane at noon, Robert Bagnall, Hazel Grove, over night; Thursday, 16th, Wilfred Drummond at noon, then to owner's stables over night; Friday, 17th, at Francis W. Hughes, Grafton St., then at owner's stable till Monday, 20th, noon.

The above route will be continued every two weeks for five rounds. For terms and conditions apply to JOHN O'BRIEN, in charge, or HAMMOND KELLY, owner. Mares at owners' risk. 5084-5-20M1wk

Synopsis of Canadian-Northwest Land Regulations

THE sole head of a family or any male over eighteen years of age, may homestead a quarter section of available Dominion land in Manitoba, Saskatchewan or Alberta. Applicant must appear in person at the Dominion Lands Agency or Sub-Agency for the District. Entry by proxy may be made at any Dominion Lands Agency but not Sub-Agency on certain conditions. Duties—Six months residence upon and cultivation of the land in each of three years. A homesteader may live within nine miles of his homestead on a farm of at least 80 acres, on certain conditions. Habitual non-residence in or receipt where residence is performed in the vicinity. In certain districts a homesteader in good standing may pre-empt a quarter-section alongside his homestead. Price \$100 per acre. Duties—Six months residence in each of three years after earning homestead patent; also to acres extra cultivation. Pre-emption patent may be obtained as soon as homestead patent, on certain conditions. A settler who has exhausted his homestead right may pre-empt a quarter-section in certain districts. Price \$30 per acre. Duties—Must reside six months in each of three years, cultivate 30 acres and erect a house worth \$50. The area of cultivation is subject to reduction in case of rough, scrubby or stony land. Live stock may be substituted for cultivation under certain conditions. W. W. CORY, C.M.G. Deputy Minister of the Interior N.B.—Unauthorized publication of this advertisement will not be paid for.

A LIFETIME OF SUFFERING

Prevented by "Fruit-a-tives" The Wonderful Fruit Medicine

By MASONNEUVE ST. HULL, QUE. "In my opinion, no other medicine is so good as 'Fruit-a-tives' for Indigestion and Constipation. For years, I suffered with these dreaded diseases, trying all kinds of treatments until I was told I was incurable. One day a friend told me to try 'Fruit-a-tives'. To my surprise, I found this medicine gave immediate relief, and in a short time I was all right again!" DONAT LALONDE 50c. a box, 6 for \$2.50, trial size 25c. At all dealers or from Fruit-a-tives Limited, Ottawa.

DUNHOLM 2.16 1-4

DUNHOLM 2.16 1/4 will make the season at the owners stable 114 Kent St., Charlottetown and the following route leaving Charlottetown for Eldon via Pownal and Cherry Valley, stopping at Dingwell Jenks, May 27, thence to Eldon, Monday night, Tuesday Point Prim, stopping at D. B. McLeod at noon, back to Eldon same day, Wednesday to Henry Bremick, Louis, Lot 60 over night, Thursday noon at A. D. Martin, Grand View; Thursday night to A. F. Bruce's, Valleyfield, Friday at Samuel Bruce's, Uxg, Friday night to Callum Bruce's, Vernon River, returning to Charlottetown by way of 48. This route will be continued every two weeks during the season. Dunholm is a Bay Stallion weighing 1125 lbs. in racing condition. is a beautiful mannered horse, any woman can drive him, but Hammond Kelly can drive him faster. When he drove him at Summerside last year he won the free-for-all trot and set a new track record for Summerside of 2:17 1/4. Dunholm started last season in 11 races, winning 8 first moneys and only for an accident at New Annan track in which he cut him self in the front foot would have ended the season unbroken. E. L. HARRINGTON, Owner. 082-5-27M3wks.

Imported Clydesdale Stallion THORNDALE 15166

ENROLMENT No. 7

This well known stallion, champion of the Maritime Provinces, winning highest honors at Halifax and Charlottetown, will make the season as follows:—Will leave Charlottetown Monday morning, May 6th, to George Green's, Kingston, over night; leaving there Tuesday morning, 7th, to Michael McManus, noon; Daniel McPhee's, Long Creek, over night; Wednesday 8th, to Donald McLean's, noon; John O'Brien's, Bonshaw, over night; Thursday, 9th, Allan Ferguson's, Hampton, at noon, Matthew Callbeck's, Trvon, over night; Friday, 10th, to Artemas Cameron's, Augustine Cove, at noon; Harry Muttart, Cape Traverse, over night; Saturday, 11th, Thomas Hammel's, noon, Aeneas Murray's, where he will remain till Monday, May 13th, noon; to George Cahill's, Beque, over night; Tuesday, 14th, to Roy Burns, Lower Freetown; noon; to John Trainor's, Kinkora, over night; Wednesday, 15th, to Bradalbane at noon, Robert Bagnall, Hazel Grove, over night; Thursday, 16th, Wilfred Drummond at noon, then to owner's stables over night; Friday, 17th, at Francis W. Hughes, Grafton St., then at owner's stable till Monday, 20th, noon.

The above route will be continued every two weeks, health and weather permitting. Terms and conditions by applying to Aeneas Murray, in charge. James F. Roper, Hammond Kelly, Owners. Mares at owners' risk. 6077-5-27M1w 5084-5-20M1wk

COLONEL WALTZ

CAN. NO. 1561 AMERICAN NO. 61581 Sire: Waltz 12532, by Anderson Wilkes, 4197 out of Laviana, Vol 5 P. 224 A.T.R. Dam Princess Virginia B. 1560—Vol 18 p. 779. A.T.R. by Colonel Cochrane 26514. 2nd Dam Hippolette by Alladin, 2255. 3rd Dam Lula Knox by General Garfield. 4th Dam Katie M. by Dick Turpin. Colonel Waltz is a bright bay stallion very handsome and a good size for a four year old. Last year as a three year old showed the best pacing ever shown on the island from a green colt. He will start the season 21st of May, leaving owner's stables, Farmington, by St. Pater's Road to Montreal, stopping on way at for dinner, at James Fitzgeralds, Bonnell Rear over night. Then by Bonnell to Alex. Stewart's, Milburn, for dinner. Then by Foresthill to Mount Hope and home to owner's stables Thursday, and will leave again on Saturday for Souris. Will stand at Keefe's stables, opposite J. G. Sterns store. Fee \$30 dollars for season. Payable Nov. 1st at owner's risk. 5069-5-18M41pd.

A Harvester's Diary

(Continued.)

Los Angeles, Cal., Feb. 15, 1918. We were invited out to dinner at the homes of three different Islanders in San Diego and spent three very pleasant evenings. I said good-bye to my hospitable friends, Mr. and Mrs. J. S. Last night went on board the Southern Pacific Steamship Company, boat Yale, which sailed for Los Angeles harbor, Wilmington, after midnight, I shall remember with pleasure my sojourn with them as long as I live. I have begun to use the return part of my ticket. "The Admiral Line" are known as "The Admiral Line." A first class return ticket from Victoria B. C. to San Diego costs fifty four dollars, with fifty-five cents war tax added. This includes berths and meals both going and returning. Before starting to return one has to go to the Co's. office and get the ticket officially stamped with date and name of boat he sailed on. If he wishes to stop at a port of call he gets a stop over check from the purser and must again get his ticket officially stamped before resuming the voyage on another boat. The Yale reached Wilmington about ten this morning. I immediately started for Los Angeles on electric train and took a room in the Huntington Hotel, the one I stayed at two days on my way south. Feb. 16—At 1:30 this afternoon I took a through car for Mount Low at the Pacific Electric stations, Sixth and Main Streets, Los Angeles—return fare \$2.00. Leaving the city behind the route lay through more open spaces where are beautiful homes surrounded by ample grounds. In sweeping curves we crossed the intervening hills to Pasadena. From Oroneta we went via Oak Knoll to the home of millionaires, Beyond Pasadena along the way are stately homes and beautiful scenes of mountains and valley. The car after labouring up and up, curving around shoulders of mountains and skirting the precipitous sides of canyons suddenly halts in the green cool depths of Rubio Canyon at the foot of the "great incline" (2200 feet above sea level). The length of the incline is 3,000 feet. One standing at the top is 3,500 feet above sea level and 1,300 above Rubio Canyon in direct ascent. Two cars are used on the incline each of which holds thirty persons. The seats are built on three levels, each deck higher than the one below. One car ascends while the other descends; an automatic clutch half way up the incline enables them to pass each other. The cars are pulled up and lowered by a steel wire cable operated by powerful machinery at the top. This endless steel cable to which the cars are permanently attached, tested to 100 tons is never needed to exceed 5 tons. There is also a still larger stationary cable which works through an automatic clutch underneath the car as an additional safeguard. The cars run on three rails. As we ascend we pass through gorges blasted from imperious rocks and over at least one big trestle. The higher we go the wider grows the view looking in the beautiful San Gabriel valley. At the top of the incline we enter a specially built electric car to finish the journey to "Ye Alpine Tavern" five miles by the road. One car crosses 15 trestles, rounds 127 curves and climbs 1,500 feet to its stopping place in front of the Tavern 5,000 feet above sea level. At one place on the road the car can look down the precipitous side of a canyon 2,700 feet deep, while above are towering masses of rocks. At one place the car makes a big horse shoe curve and emerges from the canyon almost directly overhead. Crossing the Circular Bridge one feels as though the car was suspended in the air. From the outer side he can look down hundreds of feet. "Ye Alpine Tavern" nestles in a tree-embowered glen of exceeding beauty and affords every comfort a tourist could wish for. A wood fire

burned in a large old fashioned fireplace at the far side of the large lobby, for the air is cool at this altitude, and rows of comfortable chairs invited the visitors to rest. Above the fireplace is the motto of the post: "Ye Ornament of a House is Ye Guest who doth frequent it." A. U. S. Post Office is maintained at the tavern. More than forty electric lighted cottages nearby afford opportunity for those who prefer to do light house-keeping. An up-to-date store is kept to supply their wants. Amusements are many and varied. A "trail" 2 1/2 miles in length runs from Alpine Tavern to the summit 1,100 feet above. Some hired ponies add rode to the top and some walked up. A young Frenchman from France and I walked to the summit together. I found him quite an interesting chap. He intends to enlist soon. We did not find the tramp up the zig-zag trail very wearisome in the bracing mountain air. There was no snow. From the summit, Mount Nelson, where the big new telescope is being installed, seemed only a little way off but is six miles. We found the atmosphere a little smoky but on clear days it is said one can see for 200 miles. See him mountain ranges in far Mexico, islands bathed by summer seas, beautiful vistas of valleys, foothills and mountain masses, with all the variety of nearer scenes and yawning canyons close at hand. One feels like shouting for very gladness. In fact some nearby girls did shout lustily being far from city conventions. HARVESTER.

Ask for Minard's and take no other.

War Garden Bulletin

PRACTICAL DAILY GUIDE FOR VACANT LOT AND BACKYARD GARDENERS ENLISTED IN GREATER PRODUCTION CAMPAIGN. Issued by the Canada Food Board in collaboration with experts on the staff of the Dominion Experimental Farm.

SWISS CHARD.

There is one vegetable not yet mentioned in this series and very little known to Canadians, that should really take a prominent place in the war time garden, that is to say, Swiss Chard. It is a succulent vegetable, easy to grow, easy to cook, easy to can. No vegetable gives more bountiful returns for a small amount of labour or offers a greater variety of uses. A row twenty feet long planted about this time will give an abundant supply for a family of five for the whole season if only the outer ribs are cut out each time and the remainder of the plant is left to grow. With the price of asparagus out of reach of ordinary mortals, Swiss Chard is really an excellent substitute. It can be served as a hot vegetable with sauce, or as a salad with French dressing or mayonnaise. The young leaves can be cooked in the same way as spinach and the largest ribs cut in small pieces and cooked like celery. Or again, they can be cut in five-inch pieces, boiled for from twelve to fifteen minutes and chilled before serving.

Had ship's anchor fall on my knee and leg, and knee swelled up for six days I could not move it or get help. I then started to use MINARD'S LINIMENT and two bottles cured me. PROSPER FERGUSON

BONSHAW TIME TABLE

MOTOR BOAT SRATHGARTNEY Leave Bonshaw Tues. 28 10:30 a.m. Leave Ch'town Fri. 31st 5:30 a.m. Fri. 1:30 p.m. 2wks.pd.

Notice to Owners of Motor Cars

No car is permitted to be operated upon any highway or street in this Province without having affixed thereto the Markers with its registration number thereon. The new markers for 1918 will be ready for delivery in a day or two. In the meantime new cars may be registered and supplied with temporary Markers on application at Provincial Secretary's Office. For cars already registered old Markers may be temporarily used.

ARTHUR NEWBERRY, Asst. Provincial Secretary. 5045-5-23ME21.

Farm for Sale

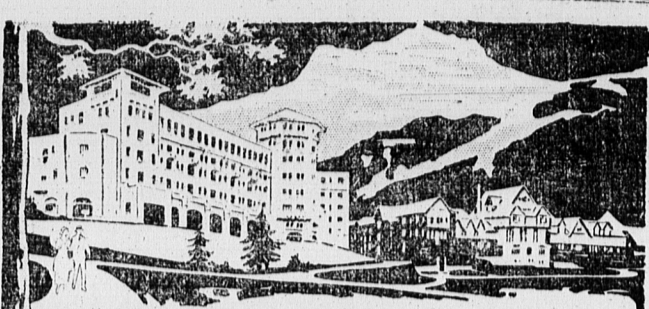
50 acres of land for sale by public auction on Saturday June 1st. One Mare, Barrister, 10 years old, one Horse 9 years old, 8 Cows with calf due to freshen last of May, one year old Heifer, one year old Bull, one Binder, Frost & Wood nearly new, one Hay Rake, one Seeder, one Hay Rake, one Gang Plow, one Single Plow, one Disc Harrow, one Spike Harrow, one Spring Tooth Harrow, one Potato Digger, one Cart and 7 wheels, one Tract Wagon, one Driving Wagon, Two Box Sleighs, Two Wood Sleighs, Three Sets Working, one Set Driving Harness, Quart Potatoes and Oats, Forks, Shovel and a lot of other articles too numerous to mention. Apply PATRICK TRAINOR, Auburn. 6067-5-24C11M41pd.

Smith—"Hello, Jones, old man! I suppose you are going to name that youngster after that rich old uncle of yours." Jones—"I don't think we will." Smith—"Great Scott, man! Why not?" Jones—"Because the wife has decided to name it after that rich old aunt of hers."

Visitor (at glance)—"I want to talk to Mr. Brown." Attendant—"What Mr. Brown?" Visitor—"I cannot remember his first name, but he's only lately deceased." Attendant (formally a department storeworker)—"Please show the gentleman some of the latest shades of Browns."

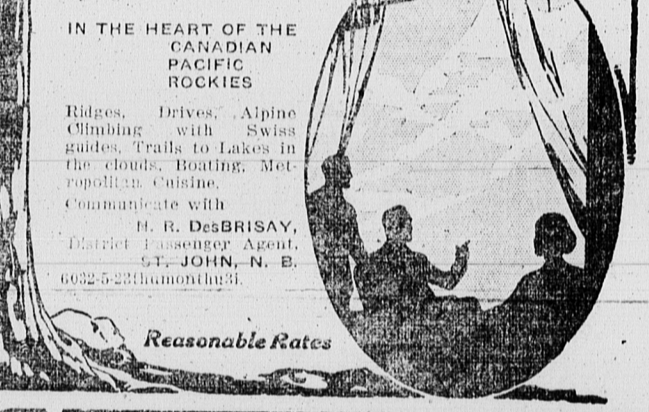
BEN BEY CIGAR 10¢ Hit for the last puff

Smith—"Hello, Jones, old man! I suppose you are going to name that youngster after that rich old uncle of yours." Jones—"I don't think we will." Smith—"Great Scott, man! Why not?" Jones—"Because the wife has decided to name it after that rich old aunt of hers."



REST AT THE CHATEAU LAKE LOUISE

Amid swiss scenes in the Canadian Pacific Rockies—windows framing million dollar pictures of Peaks and Glaciers. "In the lake, ever changing, is Beauty herself, as nearly visible to mortal eyes as she may ever be. The water, beyond the flowers, is green, always a different green. Then a little wind awakes in the distance and ruffles the surface, and by magic, covering it with a myriad of tiny wrinkles, till the lake is milky emerald, while the rest still sleeps. And at length the whole is astrid and the sun catches it and Lake Louise is a web of laughter, the opal distillation of all the buds of all the Spring."



IN THE HEART OF THE CANADIAN PACIFIC ROCKIES Ridges, Drives, Alpine Climbing with Swiss guides, Trails to Lakes in the clouds, Boating, Metropolitan cuisine. Communicate with H. M. Davison, Agent, 6032-5-23M1M1wk.

CANADIAN PACIFIC TICKET OFFICE 78 GREAT GEORGE ST. PASSENGERS FOR Montreal, Toronto and all Points in the Canadian West and on the Pacific Coast, should call on or communicate with— H. M. Davison, Agent

CANADIAN PACIFIC RAILWAY TRAVEL VIA ST. JOHN Daily except Sunday Connections from Port Borden

CANADIAN GOVERNMENT RAILWAYS PRINCE EDWARD ISLAND

Timetable In Effect, May 1st, 1918

Table with columns: Trains Outward—Read Down, ATLANTIC STANDARD TIME, Trains Inward—Read Up. Rows include stations like Charlottetown, Hunter River, Emerald Jct., Borden, Summerston, Port Hill, O'Leary, Alberton, Tignish, Mt. Stewart, Cardigan, Montague, Georgetown, Murray Harbor.

ALL THE ABOVE TRAINS RUN DAILY, SUNDAY EXCEPTED. A. HAYES, General Manager (Eastern Lines), Moncton, N. B. H. H. MELANSON, Passenger Traffic Manager, Moncton, N. B. W. T. HUGGAN, District Passenger Agent, Charlottetown.