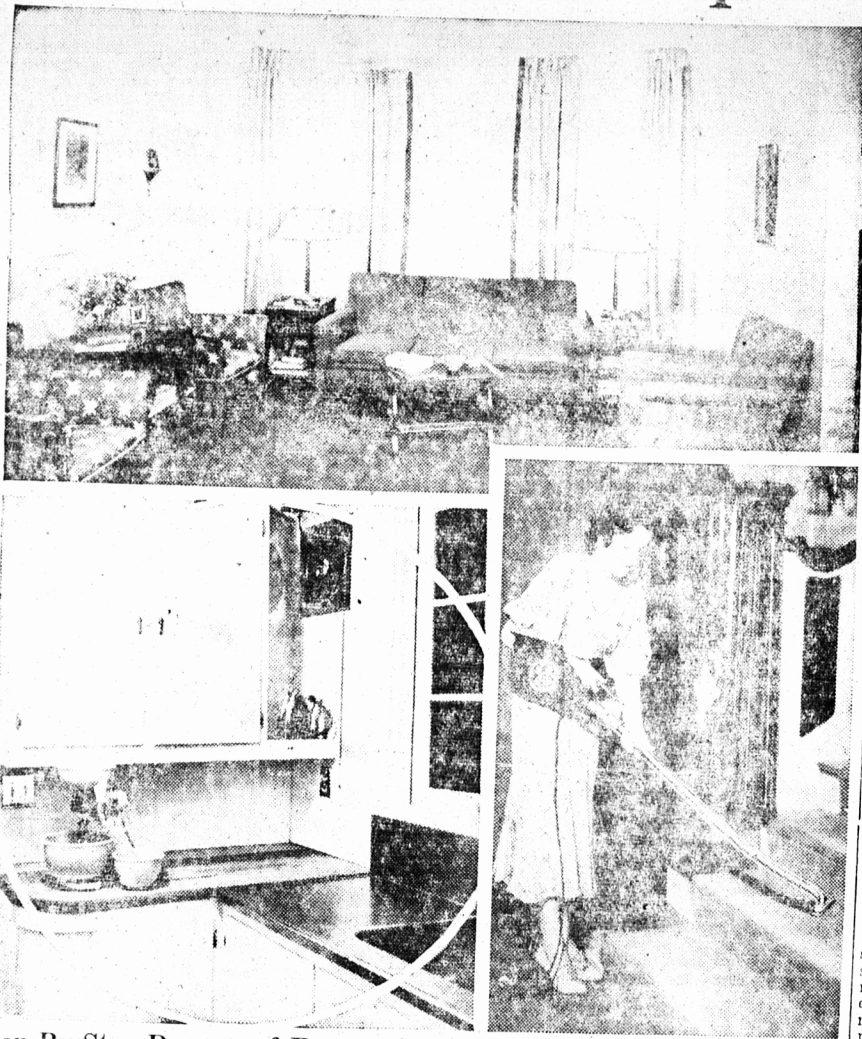


1937 IS HOME IMPROVEMENT YEAR

The Year For Putting Men Back To Work

Simple To Modernize If Wiring Is Adequate



Step-By-Step Process of Renovation Started By Many — Wiring a Feature of Home Improvement Plan

By E. T. BURNS

Canadian General Electric Home Bureau

Home modernization to most means the addition of more or less equipment to enable them to keep house electrically. In nearly all of Canada's urban areas, where the Home Improvement Plan is functioning, electric current is available to bring an army of servants into the home. The process of renovation, therefore, begins with the provision of adequate wiring. This has been recognized in the regulations which make wiring improvements eligible under the government's loan plan.

Today, in the modern home, electricity provides automatically controlled heat to cook, appetizing meals, automatic cold to preserve perishables, automatic dishwashing to lighten the housewife's burden, automatic air-conditioning to improve the health of the whole family, and a host of other conveniences to make home an even more comfortable and happy place in which to live.

If full appreciation of the many services rendered by these modern electrical workers is to be realized, first thought must be given to the adequacy of the existing wiring of the home. In most cases the wiring is quite sufficient to take care of the load imposed by toasters, irons, refrigerators, washing machines and other appliances. However, in some instances, the load imposed by the electric range and water-heater will not be expensive from a power

consumption standpoint, is none the less too great for the existing circuits and service. In this event it is necessary, when considering modernization, to arrange that the service to the home be made such as will take care of present loads and provide an adequate margin for future requirements.

Plan Enough Outlets

Since all electrical appliances must, of necessity, be plugged into, or attached to, sources of potential electrical energy, it is of utmost importance that convenient outlets be located throughout the home at points where these appliances may be used. This means an adequate number of outlets — outlets in the living-room to take care of portable lamps at either side of easy chair, and both ends of chesterfields; outlets at several points for vacuum cleaner; outlets for radio at whatever points it might possibly be located; outlet for an electric clock over the mantel; and so on throughout the kitchen, dining-room, bedrooms and basement. — Everywhere, plenty of outlets to take care of all possible future requirements.

Once provision has been made for adequate wiring, the progress of modernization becomes a simple one. The full advantage of many modern electric appliances may be gained through complete installation of these appliances. First, by careful survey, best suited for the individual requirements. Or, if preferred, modernization may be effected by following the step-by-step plan, via the purchase of one appliance at a time, bearing in mind always the ultimate goal of a

Home modernization is simple when attention has been paid to the adequacy of the wiring. This point is emphasized by home planning experts. The above illustrations portray a few of many roles electricity plays in the home of today. The upper picture directs attention to lighting effects, while the lower left shows a number of labor-saving devices in a modern kitchen. When appliances in a modern kitchen are rendered by the up-to-date vacuum cleaner as shown in the lower right reproduction. In addition to operating a host of appliances, electricity also provides air conditionally controlled heat and cold in the modern or modernized home.

completely-equipped modern electric home. It is surprising how many people have already started the step-by-step process of renovation, through the purchase of a range or refrigerator and other smaller appliances.

Few of these people realize, however, that through the purchase of these appliances they have gone a long way toward the ultimate goal of complete modernization; that they need only invest the money saved, through the use of their range or refrigerator, in other appliances; that each piece of electric equipment pays for itself and provides capital for additional equipment.

Step by Step

Assume that complete electrical modernization of an existing dwelling has been taken to provide for adequate wiring as already outlined. What equipment should be considered? Attention should first be turned to the basement. Here is space for a child's play-room, perhaps, or an antiquated heating system to be replaced by unit type air-conditioning equipment. It may be that an attractive basement-room could be equipped as a laundry.

Consider next the kitchen with its antiquated stove. Its inefficient ice-box, its sink, pantry and work-table, all arranged about the room without thought to the number of steps the housewife must make in the preparation of a pie or cake; without thought to the back-breaking strain of working at a sink that is too low, the firing lever over a hot, bothersome stove.

How different the picture can be made. The old ice-box replaced with an electric refrigerator; no more worry over dripping, ice-making, spoiled foods, constant cleaning and, in some cases, trips to the cellar or back-porch in winter. The electric refrigerator, maintaining proper temperature of between 40 and 45 degrees F., preserves food properly, thereby saving the housekeeper a surprising amount of money.

In the scientifically-planned kitchen, electric refrigerator, electric range, sink, electric dishwasher and working surfaces, are arranged with cabinet-space so that the housewife's steps are kept to a minimum. The refrigerator is located as near the service entrance as possible. A work surface is provided for the delivery of produce so that it may be sorted and distributed to predetermined storage centers.

For convenience sake, sink, dishwasher and all working surfaces should be 36 inches above the floor so that preparation and cleaning requires no bending. A convenient exhaust fan should be provided to remove all cooking odors and smoke produced from frying operations. If possible, a window should be provided over the sink, though when a dishwasher is used this is not necessary, for but very few minutes each day are spent at the objectionable task of washing dishes.

Lighting Is Important

Passing next to the living room and dining-room — Modernization of these two rooms may be very effective. In the former, lighting is of paramount importance. There should be ample light free from glare; the room should be brightly lighted, eliminating contrast; the quality of the light should be good, eliminating heavy shadows. In the latter, the intensity of light is not so important, but, as already mentioned, outlets should be provided in the dining-room as well as in the living-room to take care of radio, coffee-maker, waffle-iron, and a set of other small appliances. In the bedrooms and bathrooms, suitable lighting should be provided

Well Planned Play Room Is Great Aid in Child Character Training

A child's room should be carefully planned to provide assistance in character building, promote pride of ownership and a sense of order. These traits if cultivated during impressionable years, particularly between the ages of 10 and 13, will be productive of much benefit later in life.

Attention paid to the particular needs of the smaller members will save time of the older people. The child's room must be practical, sound-proof, and walls finished in washable material and floors covered with linoleum, cork, rubber, or other material easily kept clean and free from dust. Sunshine, fresh air, and satisfactory ventilation are essential. An adjoining sun porch has many advantages.

If the room is a combination play-room and bedroom, low shelves and cupboards should be built in to take care of toys, books, and games. Color should be extensively used, adequate heating and a cheerful atmosphere provided at all times. A blackboard will permit the use of bright crayons and provide amusement and possibly encourages attempts at drawing. Wall coverings are obtainable in many varieties from which pencil marks and other defacements may be readily washed and even scrubbed. Furniture should be simple, durable and of a size to suit the occupant. Runners, curtains, hangings must be able to withstand many washings. If possible, a special bathroom should be installed with necessary equipment of reduced proportions, but should be family friendly. If a special bench might be provided at the washstand to make the washing of small hands easier and a towel rack placed within convenient reach.

Linoleum On Walls

There is an unmistakable trend toward the increased application of wall covering materials to wall decoration. Walls covered with linoleum, or other resilient material, are rapidly gaining favor with architects, decorators and home-builders as a distinctly attractive and practical method of wall decoration.

at dressing-tables, mirrors and beds, as well as good general illumination. Lights should be opened and closing of doors should be provided in clothes-closets, and outlets should be located to take care of curling tongs, sunlamps, heating pads, electric alarm-clocks and possibly small portable-radios.

And so, when modernizing the home, each room should be carefully studied to ensure provision being made the myriads of labor-saving electrical devices both large and small. Care should be taken that correct lighting be installed in every room. There should be no dark stairways, doorways nor garage entrances; safe lighting should be available at the flip of a switch. Pains should be taken that every provision be made for reducing labor, increasing comfort and bettering the health of every member of the family.

Color Harmony By Two Means

When painting and decorating a room it is well to remember that color harmony may be attained in two ways — by the use of contrasting colors or by analogy.

Harmony by analogy is achieved through the use of related tints and shades of the same color — the use of cream on the walls, for instance with a lighter tint of cream for the ceiling and still another shade of cream for the trim.

The use of three tints or shades of green on the walls, ceiling and trim also produces harmony by analogy.

Bright colors of a complementary nature introduced into such schemes by draperies, pictures, table scarfs and furniture upholstery will prevent the general effect from being dull or uninteresting.

Light Colors in Small Room

As a rule, light colors should be used in a small room. They tend to make the room seem larger and less crowded. Light-weight fabrics should also be used, such as chintz, linen, cretonne and silk. Heavy fabrics in draperies and upholstery material may be used in the large room, where there is no danger of creating a cramped appearance.

Bay Window Make Room Attractive

The bay window once again is coming back into its own. Many a commonplace room has been turned into a room of charm and individuality with the addition of such a window. It adds both to the interior and exterior of a home.

Aside from being an interesting feature, a bay window may be important and practical as well. It may serve to increase the apparent size of a room or increase the window area. With provisions for flowers and plants it may become a miniature conservatory. With a built-in seat it may conceal heat-radiation, and with glass shelves it may provide display space for a hobby.

Built-In Ventilator Routs Kitchen Odors

Heat from the kitchen during the summer raises the temperature and adds discomfort to all the rooms of the house. Combined with cooking odors the atmosphere becomes doubly unpleasant.

With a built-in ventilator that carries the warm air out of the kitchen by means of an automatic fan, the condition may be considerably improved. The fan is mounted directly in the wall and protected by a covering concealing the blades. It operates at three speeds and draws warm air and odors out of the kitchen. It is easy to clean, weather-resistant, and has a shutter arrangement on the outer wall which adds to its neat appearance.

START UNUSUAL PROBE

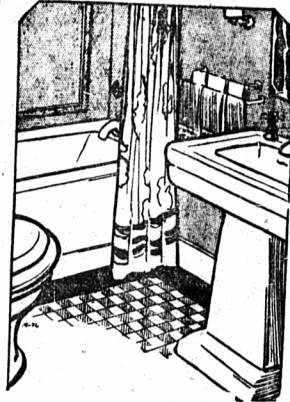
(By The Canadian Press)

BLACKHEATH, England — Aimed at compiling a cultural map of the British Isles, a campaign of mass-observation on has enlisted support of 400 volunteers — every day, persons, trained by anthropologists and psychologists. Reports are handed in monthly.

Minard's Liniment removes stains.

Tightening Doors

French doors that open in are frequently difficult to make watertight. About the only way to make them so is to have them carefully weatherstripped. Using a four-inch brass saddle or sill with an interlocking metal strip on the bottom of the doors.



The Greatest Improvement For Your Home Is a Modern Sanitary Bathroom

Our long experience, up-to-date methods, and thorough attention to details will ensure you lasting satisfaction.

Protect the Health of Your Family

Consult us for any and all Plumbing changes in your home. Kitchen sinks, Set-tubs, Domestic Water Heaters. Extra faucets for lawn, and garden hose, car washing, etc., and Hot Water Heating Systems.

Also Ranges for Coal, Wood or Oil. We also sell a guaranteed oilburner for ranges on easy terms to suit purchaser.



FRED H. TRAINOR

80 Grafton St. Opposite Prince Edward Theatre Phone 393-J

WANT THE COMFORT OF A MODERN HEATING SYSTEM?

HOME IMPROVEMENT PLAN clears the way

IMPERIAL G. & B. OIL HEAT

is

Completely Automatic

SAFE, CLEAN, ECONOMICAL.

the most modern asset you can add to your home

Before building, enquire about the MONO-FLO forced circulation system, with ARMSTRONG circulator.

ALL INSTALLATIONS CAREFULLY ENGINEERED

PALMER ELECTRIC

155 Great George Street — Phone 1444

ASPHALT SHINGLES

Mineral Surfaced Asphalt Shingles come in many non-fading colors and blends. They possess a high degree of insulation value, keeping heat IN the home in winter — OUT in summer.

Long-lasting — low priced — easy to apply

Fire Resisting

ASK TO SEE SAMPLES AND GET QUOTATIONS ON YOUR ROOF

—at—

The Rogers Hardware Company Limited

Cooperating with the HOME IMPROVEMENT PLAN

Distributors for Barrett and Building Products

ROOFINGS

Solving Your Paint Problem Is As Easy As A. B. C.

Always Buy

CROWN DIAMOND PAINTS

ENAMELS & VARNISHES.

.....

"DUROLAVE"

That new Kind of Water Paint—the kind that comes in the form of a soft paste; the kind that is really washable. 10 beautiful shades, and white.

5 lb. Tin — — — 90c

PROWSE BROS. Ltd.

EXCLUSIVE CROWN DIAMOND CITY REPRESENTATIVE

"BRANTFORD" ASPHALT ROOFINGS and SHINGLES

If you are considering re-roofing we will take pleasure in showing you the many attractive homes in Charlottetown roofed with many blends of beautiful, fire resistant, colorful

Brantford Asphalt Shingles Made in the Maritimes for Maritime Conditions

FENNELL & CHANDLER

WHOLESALE & RETAIL HARDWARE DEALERS

Brandram-Henderson, and Canada Paints

Canada Cement, Snowflake Lime, Wall Board, Dry, and Tarred Sheathings

Glass, Fire Brick, English and Canadian White Lead

Yale, and Peterborough Locks and Hardware