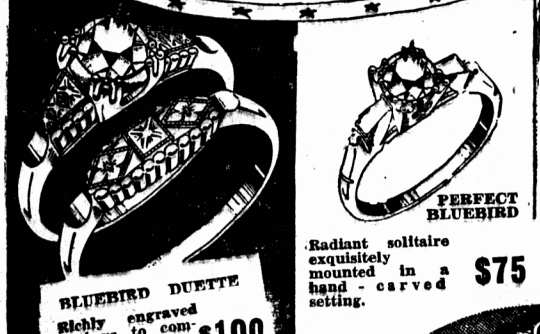


Wellner's The Friendly Christmas Store!



THE BEST WAY TO SAY "Merry Christmas..." with Wellner's Jewelry

Yes, you'll find many distinctive gift suggestions at this popular store.



PERFECT BLUEBIRD BLUEBIRD DUETTE Richly engraved with brilliant-cut diamond. \$100

LORIE For Ladies Smartly styled and precision built for dependability.

BULOVAS Guaranteed From \$24.75 FOR MEN, WOMEN For the gift that pleases choose a Bulova. Distinctive styles for men and women that are guaranteed reliable.

Lovely Compacts Large and beautiful... Charmingly fashioned for her.

WELLNERS Jewelers Since 1868

LUMBER WANTED For Kings County Hospital

SEALED TENDERS to be marked "TENDERS FOR LUMBER" and addressed to the King's County Hospital, Montague, P. E. I., will be received up to December 20th, 1945, for the following quantities of Spruce Lumber:

Section A. 400 pcs. 2" x 10" x 15.5' D2E 200 pcs. 2" x 10" x 8.5' D2E

Section B. 36 pcs. 2" x 8" x 9' D2S 180 pcs. 2" x 8" x 15.5' D2E 90 pcs. 2" x 8" x 9' D2E

Section C. 6000 L.F. 2" x 6" D2S2E 1250 pcs. 2" x 6" x 9' D2E

W. C. T. U. NOTES

BROADCAST ACROSS THE WATERS (Federal Council Bulletin for November)

"On Rally Day Sunday a stranger appeared at the Port George Presbyterian Church. New Year's Glee and told this story. During the grimmest days on the Anzio Beach he had found half buried in the sand and covered with filth and blood a scrap of paper. Not much was left of it but a bit of poem and a name and a few messages.

"If radio's slim fingers Can pluck a melody From night and toss it over A continent or sea; If songs, like crimson roses Are culled from this busy air, Why should mortals wonder If God hears prayer?"

IS THERE HONOUR IN THE GOVERNMENT?

An honourable man always fulfils his promise. This, we feel sure, is a proposition that will meet with universal consent. Does not the same statement apply to the Government?

The Women's Christian Temperance Union have been given the assurance that a full-time Temperance teacher will be appointed, at a salary of \$2,000 and \$1,000 for expenses, to go to all the schools in Prince Edward Island and teach temperance. Why the delay in making this appointment? We understand that applications have been sent in by many competent and desirable applicants. It is now less than a month till Christmas, and the winter months are not a very good time in which to appoint a province-wide itinerant, with severe weather and bad roads in prospect. If this appointment is not made until after Christmas, it will be nearly over. Procrastination is the thief of time. The last information we have is that the Government will reply to a member of the "Guardian" staff, that "no appropriation has been made for this purpose."

There is another promise also, for the fulfilment of which we are waiting. This promise is so written into the very constitution of things that it is taken for granted and is a part of the Government's policy. It is that when the Government asks the people by means of a plebiscite what is their will on any question, they will carry out that will when determined to the letter. This promise also waits to be fulfilled. The recent amendment to the Prohibition Law is a direct infraction of the spirit of that promise. If the Government are not honourable and straightforward in their dealings with the people, they are not setting a good example, and they can't expect that the people will consider them satisfactory as representatives. We are waiting for them to make good these promises. —Edith Sterns.

As a member of the W. C. T. U. I have been very much impressed by the splendid Christmas articles written by our Provincial President, Miss Edith Sterns for the "Guardian's" W. C. T. U. column. Surely she is the true follower of our beloved leader, Frances E. Willard. Women and men too of this type are sorely needed in our province today. I am to say the least, glad to be a member of the organization of which she is President. Mrs. William Clark, North Wilshire, P.E.I.

THE MAN OF MUNICH AND THE MAN OF GALILEE

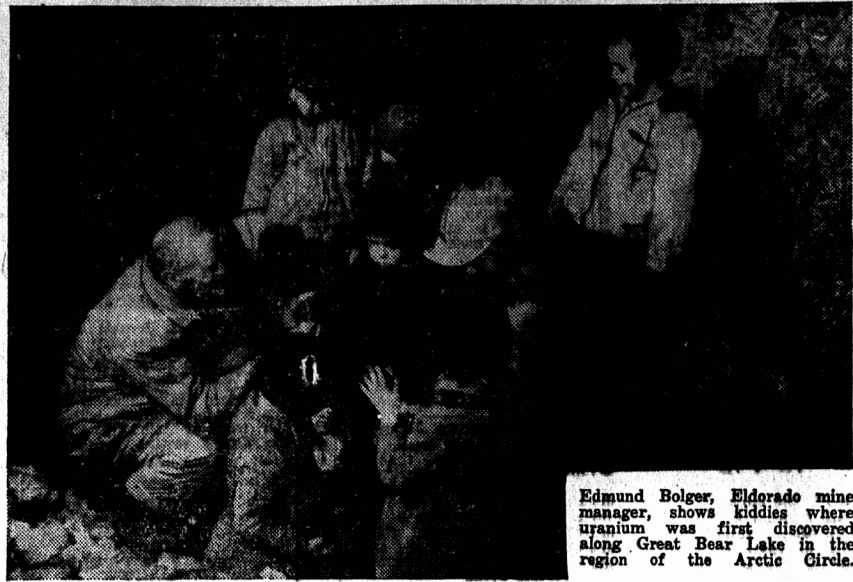
(From an address by Field Marshal Smutts delivered in Capetown. Speaking from larger and wider experience and reflection than perhaps his brilliant articles written in the past, he wishes to say that fundamentally the world has no need of a "New Order," or a new plan, but only of the historical Christian idea. Our Christian civilization is based on eternal order and endles plan in the message of Christ.

Many new messages and messengers will appear in the days of great tribulation. Let us hold on to the eternal Message. Let us follow the light that once shone before us, the greatest light that has ever arisen on the human horizon. In the twilight of today I see on that horizon not the man of Munich but the Man of Galilee. I see Him going round villages and His stricts teaching and spreading His message of the New Kingdom, healing the sick and suffering. And His message is "Overish in love your fellow men, irrespective of race or language, cherish and keep the Divine idea in your heart as the highest good." This is the message for the Church of today and for all times—joyful tidings, London, England.

IF MUST BE OF THE SPIRIT IF WE ARE TO SAVE THE FLESH

"We have had our last chance. If we do not now devise some greater and more equitable system, Armageddon will be at our door. The problem basically is theological, and involves a spiritual resurgence and improvement of human character that will synchronize with our almost matchless advance in science, art, literature and all material and cultural developments of the past two thousand years. It must be of the spirit if we are to have the flesh." —From the address of General Douglas MacArthur, after receiving the surrender of the Japanese on U.S.S. Missouri, Tokyo Bay, Sunday, Sept. 2, 1945.

Distance, Not Weather, is Main Hardship at Isolated Eldorado Rich Uranium Deposits Discovered After Hazardous Exploration



Edmund Bolger, Eldorado mine manager, shows kiddies where uranium was first discovered along Great Bear Lake in the region of the Arctic Circle.

Some of the married women work at the Eldorado Company. Mrs. Charles Beles is a stenographer in the mine office. Mrs. Henry Howard works as an assistant in the mill laboratory. Mrs. Robert Powell, a trained nurse, is a hospital assistant and Mrs. Amor Thorgilsson is assistant postmaster and storekeeper. The others are fully occupied looking after their homes and babies. They have few complaints about life in the sub-Arctic other than the general regret that there is "no place to go" and that radio reception in this northern latitude is not so good. They keep busy and happy and, like women in all small communities, create a social life of their own. They give little teas and parties, all belong to the Port Radium branch of the Red Cross, which raised \$1,000 last year.

The wrappings of the presents which arrive from "outside" do double duty as Christmas. Most of the gifts exchanged are home-made. Mrs. Howard's presents—pottery pieces which she made from local clay baked in the ovens of the assay office—were the admiration of the camp last year. Christmas trees are scarce, but the stunted little spruce of the region do nicely. Their brown cones are painted in bright colors. A string of lights on the community hall tree astounded a group of wide-eyed Indian visitors last season. The Indians couldn't understand the "candies" didn't set the tree on fire.

The Christmas program this year will differ little from that of last season. A Christmas party and tree for the youngsters, in the recreation hall. Special Christmas dinner for the men, in the cook-house dining hall. Air express charges bring the cost of the party to \$4 at Port Radium, but there will be Christmas poultry in every home. And on Christmas Eve, according to tradition, there will be a party at Manager Ed Bolger's house with a good deal of visiting around thereafter. But Christmas Day will not dawn—for there is neither dawn nor daylight at that time of year. The day will merely arrive by the clock.

At Easter the women of Port Radium hold their own version of an Easter parade. They don their best parkas and stroll on the rocky slopes above the settlement. Last Easter the community was visited by a priest. This was a big event, and after mass an Easter breakfast was served at the home of Mrs. Howard, a non-Catholic. She made waffles for her guests and the menu also featured fresh eggs flown from Edmonton on the occasion.

There is neither church nor school at Port Radium. Like scores of youngsters on isolated ranches and in the remote places of Alberta and the Territories, the children of Port Radium study the correspondence courses sent out by the Alberta Department of Education. Although there is no school there is education; and although there is no church there is religion. If there is one thing that strikes the visitor most forcibly it is the essential decency of the settlement, the scrupulous respect for the rights and feelings of others.

There are none of the cliques and petty feuds that so often develop among isolated groups when people know each other too well, the people get along together. Quarrels are rare; malicious gossip is unknown.

In 1929 Gilbert LaBine was managing director of Eldorado Gold Mines, a private company originally established to operate a gold mining property in northern Manitoba. This find was petering out and LaBine, an experienced prospector, set out to look for another property. At Hunter Bay, a northwesterly reach of Great Bear Lake, he staked claims on a copper discovery, planning to return the following year. As he flew south from Hunter Bay at the end of the season he saw "gossans", masses of oxidized rock that indicated mineralization in the Echo Bay region, and decided to check the area on his way back to Hunter Bay the following year. In March, 1930, he picked up E. C. St. Paul, an old friend and fellow prospector, at Red Lake. On the 28th of that month the two men flew from Fort McMurray to the head waters of the Cassell River. The plane made two flights to land their 1600 pounds of supplies and a small sectional camp. The two prospectors made their own sled, then set out to follow the shoreline of Great Bear Lake, to work north through the Echo Bay country to the original stakings at Hunter Bay.

In the meantime Charles LaBine, president of Eldorado, Shirley Cragg, a company director, and a man named Seaberg were to await the break-up, then start from Waterways by canoe with supplies, to meet LaBine and St. Paul at Hunter Bay in early summer.

A sociologist might point out that the population is hand-picked. One enters Port Radium only by authority of the Eldorado management. Good health, cheerfulness and the temperament to cope with abnormal conditions of life in the sub-Arctic are among the necessary qualifications. There is more to it than that, however. The people are dependent on each other. They sense that the little bits of backyard gossip and selfishness are more dangerous in an isolated settlement than elsewhere. Otherwise, life in Port Radium would be intolerable. So there is goodwill and tolerance, the religion of the Golden Rule.

If this aspect of life in Port Radium seems treated at undue length the writer has no apologies. It is one of the dominant impressions of the area. Perhaps there is an analogy. The atom is split when disruptive forces are greater than the binding forces. So it is with a community, with the world. People are beginning to realize in these first months of the atomic age that the world community cannot afford to continue a dog-eat-dog existence any longer. That world brotherhood is no longer a distant ideal but an immediate necessity. Port Radium may be a little object lesson in human relations.

Edmund Bolger, Belleville-born mining engineer who manages the Eldorado Mine, says that he did not know what use was being made of the pitchblende concentrates from Eldorado until the secret was revealed in August. "I only knew that the job was important. We were promised top priorities on men and materials. I didn't take that too seriously at first but when I found that the priorities really worked I knew we were part of something big. Maybe some of us did a little guessing. If so, we didn't dare talk about it."

Ed Bolger says Eldorado has one in eight men several years to the lake made travelling difficult and the two men equipped themselves with steel creepers to hold their footing on the slippery ice. Occasionally they had to descend around enormous pressure cracks. Sometimes they prospected as far as ten miles inland. By the time they reached Conquer Bay on May 1st their prospecting had been without result. By the time they reached Echo Bay on May 16th, St. Paul had been stricken snow-blind by the dazzling monotony of ice. They pitched camp in the lee of the bay and St. Paul remained in their tent while LaBine explored the shoreline.

Within an hour LaBine had discovered silver on a small island near the jutting promontory now known as LaBine Point. Then he went across the ice to the point to investigate a picturesque showing of stained and colored rock. It was there he discovered a vein of pitchblende, heavily impregnated with silver. He went around the point and there he discovered an even more spectacular vein of that same silver-bearing pitchblende ore.

As remarkable as the discovery itself was the fact that LaBine had recognized it. Few prospectors could have identified the pitchblende readily, but it happened that LaBine had once prospected some radio-active deposits in Lanark county in Ontario, and this had led him to make a study of uranium ores.

LaBine and his helper staked two claims, not wishing to use up all the staking privileges of their license, and feeling that there might be more deposits in the thirty miles between Echo Bay and Hunter Bay. They found nothing in those thirty miles. They did, however, find themselves caught up in a prospecting rush to the Hunter Bay area. Big mining companies were sending parties in search of uranium. LaBine and St. Paul promptly went to their own and with only a take-down canoe to buck the treacherous waters of Great Bear Lake, with Charles LaBine and his party delayed somewhere on the Mackenzie, they couldn't get back to Echo Bay. They heard news that rival prospecting parties were exploring down in the Echo Bay region. It wasn't until mid-July that LaBine was able to engage a freelance pilot, W. J. McDonagh, to bring him back to the scene of the find. There he found out of the big outfit prospecting parties camped on the point.

The rival prospectors had seen LaBine's boundary posts. They kidded him about his "silver" find and went away without staking anything for themselves. LaBine and St. Paul promptly went to their license in staking eight more claims. When the other members of their party arrived in August they worked feverishly. The samples they brought out for analysis when they flew out to Port McMurray in September showed that 100 milligrams of radium, worth \$7,000, could be recovered from one ton of the pitchblende ore.

Even then, LaBine found that the world wouldn't believe him. People scoffed at the radium story. A promoter's myth! As for copper and silver, how could it be mined at a profit 1,400 miles from railroad? Not until Hon. W. A. Gordon, then Minister of Mines—a Halifax neighbour of LaBine—sent in Hugh S. Spence to report on the discovery the following year, did the world believe.

"Beyond any question," reported Spence in his preliminary report, the deposits at LaBine Point constitute a very valuable source of radium. The two main veins can be expected to yield at least several thousand tons of high-grade ore. Underground exploration can be expected to materially increase the tonnage.

That settled it. The world believed. And Eldorado has justified LaBine's faith ever since.

(The next installment of this series will tell how the Eldorado Company conquered obstacles of transportation and marketing, how Canada took over the property as part of the secret research project in the development of atomic energy.)



Gilbert LaBine, president, Eldorado Mining and Refining, a Crown company.

The two prospectors worked their way northward. There were bays in Great Bear Lake more than twenty-five miles deep, unmarked on any map. Glare ice on the lake made travelling difficult and the two men equipped themselves with steel creepers to hold their footing on the slippery ice. Occasionally they had to descend around enormous pressure cracks. Sometimes they prospected as far as ten miles inland. By the time they reached Conquer Bay on May 1st their prospecting had been without result. By the time they reached Echo Bay on May 16th, St. Paul had been stricken snow-blind by the dazzling monotony of ice. They pitched camp in the lee of the bay and St. Paul remained in their tent while LaBine explored the shoreline.

Within an hour LaBine had discovered silver on a small island near the jutting promontory now known as LaBine Point. Then he went across the ice to the point to investigate a picturesque showing of stained and colored rock. It was there he discovered a vein of pitchblende, heavily impregnated with silver. He went around the point and there he discovered an even more spectacular vein of that same silver-bearing pitchblende ore.



Port Radium's isolated store, recreational centre, library and post office is run by Mr. and Mrs. Amor Thorgilsson.

Advertisement for Elco Bridal Wreath, featuring a diamond and the text 'THE WATCH WORD FOR FUTURE'.

Advertisement for Designs Prints in Spare Time, featuring a woman and the text 'NEW YORK, Nov. (CP) - Lettie Vera, Rumanian actress who stepped from a part in Broadway's "Merry Widow" to a Hollywood contract, is designing textile prints'.

Advertisement for Aderna Jewellery, featuring a woman and the text 'C. B. BOEHNER Watchmaker & Jeweller Montague'.

Advertisement for high-style resort collections, featuring a woman and the text 'LONDON (CP) - Fifty veterans of the Matabele War of 1896 held the annual reunion banquet here.'

Advertisement for Webster, featuring a man and the text 'LONDON (CP) - Phil L. Geon Pelling, prisoner-of-war in Germany for 8 1/2 years, has landed his first professional stage role in which he plays the part of a brutal German soldier.'

A large comic strip titled 'TILLIE THE TOILER' with multiple panels showing characters and dialogue.