

Advertising Rates Payable in Advance

Minimum Charge for Any Advertisement 25 Cents
Central Guardian locals, 5c per word; Western and Eastern locals 2c per word; Announcements and Coming Events 3c per word; Classified 3c per word; In Memoriam Notices 70c per inch; Lists of Floral and Spiritual Offerings, Cards, etc., 10c per line; Letters of Condolence 70c per inch; Wedding engagements 40 words for \$1.00 and 10 cents for every additional 3 words. Notices of Thanks and Appreciation, 70c per inch or 4c per word. Lists of Subscribers 10c per cent per Address and Presentation \$1.00. Other rates on application.

For Sale

FOR SALE - ANTIQUES. 62 Prince Street. L-368-8-15-31.

FOR SALE - FITCHER PUMP, invalid's chair, dresser, chairs, etc., 246 Fitzroy. L-356-8-15-31.

FOR SALE - BICYCLE GOOD REPAIR. Apply Eric Adams, New Brunswick. L-361-8-16-11.

FOR SALE - ONE HYDRAULIC hoist with a four yard steel box. Apply 141-14-31.

FOR SALE - TWO PURE BRED AYRSHIRE Bulls age 18 months, two second hand binders, one 6 H. P. Engine. Apply P. V. Robbins, Morell. L-490-8-13-31.

Miscellaneous
LEAVING FOR BOSTON AUG. 18, can take two passengers. Call 300-15-4 ask for Mr. Lomeragan. L-555.

To Let
TO LET - HOUSE WITH MODERN conveniences and garage. Hilbert Frizzell, St. Avaris. L-597-8-16-19-21.

Men Wanted
EVERY DAY CARRIES ITS OWN expenses. To cover these you need a steady income. With a Family Agency you pocket cash profits every day and at any time you are free to give up and return your unsold goods for credit. For free details and catalogue: Family, 578 St. Clement, Montreal. N-321-2.

Auction Sale
DESIRABLE FARMING PROPERTY
To be sold by auction on the 21st of August at Hope River, 2 1/2 acres farm land, formerly known as the Peter L. Traub property. This farm has good forest land as well as excellent cleared fields. The property contains a large barn and four barns all in good condition. Auctioneer J. P. Bradley. THE EASTERN TRUST CO. L-578-8-15-61.

Mortgage Sale
There will be sold by Public Auction in front of the Court House in Souris in King's County in Prince Edward Island on Saturday the twenty-fourth day of August, A. D. 1940 at the hour of twelve o'clock noon ALL THAT TRACT piece or parcel of land situate lying and being on Lot or Township Number Forty-seven in King's County in Prince Edward Island, bounded and described as follows, that is to say: Bounded on the North by the Gulf of St. Lawrence; on the East by land now or formerly owned by George McDonald; on the South by land now or formerly in possession of Alexander Beattie; and on the West by land in possession of Stephen McDonald, formerly in possession of Mrs. Alexander McDonald, and containing SEVENTY-FIVE acres of land a little more or less and being the farm known as the "Sandy Alan farm" formerly in possession of Catherine McDonald.

NOTICE
All arrears of School Taxes in Canoe Cove School District, if not paid on or before August 30, will be handed to an attorney for collection by order of Trustees. L-607-8-31.

Mortgage Sale
There will be sold by Public Auction in front of the Court House in Souris in King's County in Prince Edward Island on Saturday the twenty-fourth day of August, A. D. 1940 at the hour of twelve o'clock noon ALL THAT TRACT piece or parcel of land situate lying and being on Lot or Township Number Forty-seven in King's County in Prince Edward Island, bounded and described as follows, that is to say: Bounded on the North by the Gulf of St. Lawrence; on the East by land now or formerly owned by George McDonald; on the South by land now or formerly in possession of Alexander Beattie; and on the West by land in possession of Stephen McDonald, formerly in possession of Mrs. Alexander McDonald, and containing SEVENTY-FIVE acres of land a little more or less and being the farm known as the "Sandy Alan farm" formerly in possession of Catherine McDonald.

Mortgage Sale
THERE WILL BE SOLD BY Public Auction in front of the Law Courts building in Charlottetown on Monday, the 19th day of September, A. D. 1940, at the hour of Twelve O'clock Noon, ALL THAT TRACT PIECE OR PARCEL OF LAND situate lying and being on Lot 33 in Queen's County in the Province of Prince Edward Island, bounded and described as follows, that is to say: COMMENCING at a stake set in the south side of Mathieson's Creek in the northwest angle of land in possession of Alex. Mathieson & Son, William Lane, and thence running south along said Alex. Mathieson's Creek to land in possession of Isaac Cudmore, now Joseph J. Younker, and thence north along the boundary line to land in possession of Mrs. Mary Dart, now George Mathieson, thence north along the boundary line to land in possession of Mrs. Mary Dart's land to Mathieson's Creek, and thence eastward along various courses, of said Creek to the place of commencement, containing fifty (50) acres of land a little more or less.

Mortgage Sale
The above sale is made pursuant to the power of sale contained in an Indenture of Mortgage dated the 21st day of September, A. D. 1923 and made between Percy Carr of Oyster Bed Bridge in Queen's County aforesaid, farmer and Annie Carr, his wife, of the one part and Donald R. McDonald of Orwell Cove in Queen's County aforesaid, Farmer, of the other part, default having been made in payment of principal money and interest secured thereby.

Mortgage Sale
For further particulars apply at the office of H. E. MacPherson, R. C. Riley Building, Charlottetown. Dated this 7th day of August, A. D. 1940.

Mortgage Sale
CHARLES McDONALD, LEO McDONALD, Executors of Estate of Donald R. McDonald. L-421-8-9-16-23-31.

STOCK QUOTATIONS

N. Y. Stock Exchange

Table of N.Y. Stock Exchange quotes including Am Radiator, Am Tel Tel, Am Water, Anaconda, etc.

Montreal Stock Exchange

Table of Montreal Stock Exchange quotes including Am Radiator, Am Tel Tel, Am Water, Anaconda, etc.

Banks

Table of Bank quotes including Canada, Commerce, Montreal, Royal, Nova Scotia.

Montreal Curb

Table of Montreal Curb quotes including Abitibi Com, Abitibi Pfd, A Oil, etc.

Produce Prices

Table of Produce prices including Butter, Eggs, Graded shipment, etc.

IN THE PROBATE COURT

The 30th day of July, A.D., 1940. In re Estate of Helen Augusta Aasen late of Souris in King's County in the said Province, widow, deceased, testate.

GRAIN

CHICAGO, Aug. 15-(AP)—Wheat prices tumbled about a cent a bushel today, establishing new seasonal lows at levels unequalled here in almost a year.

FAMINE In Europe?

NEA Washington Survey's Facts, Figures Show It's Possible—If Not Imminent

WASHINGTON, August—Famine in Europe is possible—if not imminent. That is the one logical conclusion after many conversations with relief organizations and government officials here in Washington.

FINANCE

By Frederick Gardner. Associated Press Financial Writer. NEW YORK, Aug. 15-(AP)—The stock market kept its eye on recovery ground today despite a prediction of the air battle over Great Britain which some expected might bring a quick decision in the conflict.

Market At A Glance

(By The Canadian Press) Toronto and New York—Stocks closed higher. Montreal—Utilities and golds high; papers and other industrials lower.

GRAIN

CHICAGO, Aug. 15-(AP)—Wheat prices tumbled about a cent a bushel today, establishing new seasonal lows at levels unequalled here in almost a year.



Six famine factors: British blockade stops foodstuffs.



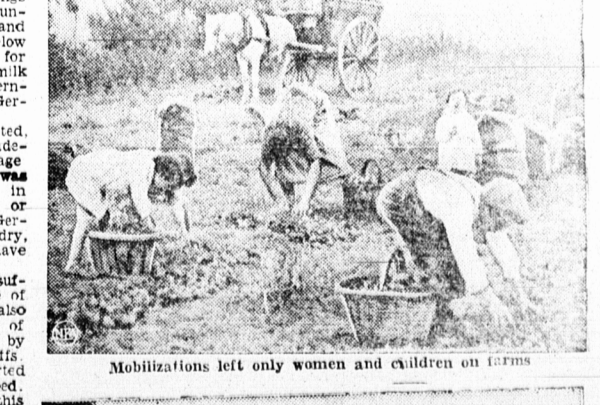
Germany live off and milk countries they invade



Crop-destroying floods followed record cold winter



Ravages of war destroyed crops in the field.



Mobilizations left only women and children on farms



Transport destruction handicaps distribution of food.