

When you varnish

use



GLIDDEN HIGHEST GRADE GREEN LABEL BRAND Florette

The Rogers Hardware Co Ltd

CAN LIBERALS MAKE PROHIBITION EFFECTIVE? JUDGE BY THEIR PAST RECORD

The Liberals under that staunch Prohibitionist, the Hon. J. H. Bell, were in power from 1919 to 1923.

Read what the Rev. Geo. C. Taylor had to say of the Liberal administration of the Prohibition Act when he spoke in First Methodist Church on January 4th, 1922, the third year of the Bell Regime.

REV. G. C. TAYLOR

"Drunkenness and crime, always found together, have never been so rampant in my knowledge of P. E. I. as now," the Rev. Mr. Taylor declared emphatically.

"I have lived here almost twelve years and without any doubt there has never been such a condition of things along the lines of drinking—such looseness and such heinousness of crime.

"There was a period here when people said, 'Why do we keep a jail?' But that time is past. Not only do we keep a jail but we continue to keep it full.

"Property is no longer safe.

"It is true that a man's place of business or his dwelling is no longer safe.

"They steal even from the Churches now-a-days.

"Law breaking goes on of the most violent sort and very few are the convictions and very few the arrests even."

MR. G. F. HUTCHESON

Mr. G. F. Hutcheson, then a member of the Prohibition Commission, said:

"The question raised by Mr. Inman was whether education or legislation was the better method of dealing with this important question. He thought education should come first, followed by legislation. He happened to hear the address of Mr. Taylor, and while it might appear a little extreme in parts, on the whole it had his approval. He was afraid he could not agree with those who said we had reached a much higher standard—he was afraid that the moral standard had been on the retrograde, and there must be a reason for it. It was for those who had the welfare of the community at heart to discover the reason and have the baneful influence removed."

REV. G. W. F. GLENDENNING

Speaking on Sunday, January the 8th, 1922 in Zion Presbyterian Church the Rev. G. W. F. Glendenning, of the First Methodist Church, who was a member of the late Prohibition Commission, emphatically supported the statements of the Rev. Mr. Taylor in regard to the prevalence of drunkenness and crime generally in the city, under the Bell Government, and maintained that clergymen had a right to speak their mind upon these subjects. Mr. Taylor had delivered his much discussed address at the Week of Prayer in the Methodist Church last week, he said, at the earnest request of the Ministerial Association and he, (Mr. Glendenning) had specially requested him to speak from his pulpit. "Whatever may be the opinion of Laymen," proceeded Mr. Glendenning, "the Ministerial Association are substantially behind Mr. Taylor in regard to his denunciation of the moral conditions prevailing."

REV. H. D. RAYMOND

One year later, in the 4th year of the Liberal Government regime, on January 12th 1923, the Rev. Mr. Raymond of St. Paul's Church speaking in the Baptist Church said:

"Prince Edward Island boasts that it is the first Province of the Dominion to adopt the Prohibitory Law.

"When a thousand miles from here the speaker had heard the Island spoken of in terms of the highest praise on this account.

"But what do we find when we live here?—a state of conditions which is a shame and a disgrace to any Province or any country.

"You will find drunkenness more common here in the City of Charlottetown than you will find it in any city in the Dominion of Canada, and no apparent attempt to check it.

"I do not know what instructions are given the police nor do I know how well the instructions are carried out but I do know something of the difficulties which face those who try to enforce the law

"I say to you that the conditions of life in this city and Province in regard to the drink traffic are a blot on the landscape of the Dominion."

This is how the clergy found the Liberals administered the Prohibition Law when they were in power under the Hon. J. H. Bell.

What are the conditions likely to be should Mr. Saunders, with his cheap liquor policy, get into office?

The Spicy Nasturtiums

A bowl of flaming nasturtiums on an antique table is in character with the furniture. It is an old-fashioned plant, a favorite dating back to the great-grandmothers of the present generation. Its gorgeous colorings and also some of its soft, delicate shades, together with the spicy fragrance and the shield-shaped leaves with the stem in the middle, make a handsome bouquet without the addition of other flowers or greenery.

creamy whites with rose, yellows, oranges, flames, scarlets and other shades, with many handsomely blotched varieties. The dwarf nasturtium for beds and edgings and the tall, or climbing varieties, to sprawl over fences or to be trained on porches or to drop from window boxes are ideal subjects. The climbers have been described as "not climbers, but very long plants." This is accurate. They cannot climb, having no tendrils, or twining habit, but the stem continues to lengthen out, and if a climber is wanted, it must be tied to a support from time to time. It is by nature a rambler and a sprawler.

strain of climbing nasturtiums is notable for the brilliancy of its flowers, which are somewhat smaller than the standard type. The strain stands rich soil better than the others, and responds with extra length of vine. The dwarf Chameleon is unique in having no two flowers on a plant precisely alike, all being blotched and marbled. Cloth of Gold, with brilliant yellow foliage, is often used as a foliage plant. The intense scarlet flowers with the brilliant yellow foliage makes an intense bit of color in the garden.

APRON POCKETS.

To prevent the catching of your apron pockets on door-knobs as you pass, make the pockets on the under side of the apron, near the black maroon to sulphur and es with fringed flowers. The Lobbed edge.

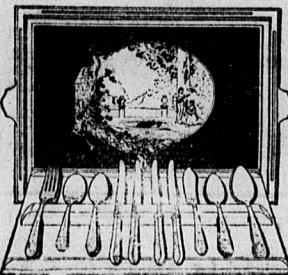


The "Foursome"

COMMUNITY PLATE

KEEN competition—down to the final putt! Then from the velvet-green of the links to the gleaming damask of luncheon or dinner table, and the hospitable convenience of the new Foursome in COMMUNITY PLATE—the economy silverware service for four.

Twelve Spoons, four Forks, four De Luxe Stainless Knives, Butter Knife and Sugar Spoon all complete, in a gorgeous peacock-blue Serving Tray. Five exquisite Community patterns to choose from, all considerably priced.



22 Pieces

\$28.00 Complete with Tray

W. W. WELLNER, LIMITED. Jewelers Since 1868

Professional Cards

McLEOD & BENTLEY J. A. Bentley W. E. Bentley, K. C. Barrister and Attorney-at-Law Office: 180 Richmond Street MONEY TO LOAN Charlottetown, P. E. I.

McDonald & McPhee B. A. J. A. McDONALD H. F. McPHEE B. A. Barristers, Attorneys, Etc. Money to Loan.

Mark R. McGuigan B. A. BARRISTER, SOLICITOR, ETC. Money to Loan. Cameron Block, Charlottetown, P. E. I.

Dr. C. C. Archibald Graduate of N. Y. Post Graduate Medical School and Hospital Practice limited to Eye, Ear, Nose and Throat Testing Eyes and supplying Glasses Office, Bayer Building Great George Street Office Hours—9 to 12.30, 1.30 to 5.00.

BOSTON by Steamer

INTERNATIONAL LINE Fare from St. John \$10, from Eastport or Lubec, Me., \$9.

Every Wednesday steamer leaves St. John 9.00 A. M. Atlantic Time, Eastport 1.30 P. M., Lubec 2.30 P. M. Eastern Time, arriving Boston Thursday 10.00 A. M. Daylight Time.

Every Saturday steamer sails direct from St. John to Boston. Leaving St. John 7.00 P. M., Atlantic Time, due Boston Sunday 2.00 P. M. Daylight Time.

Connections at Boston with direct steamer to New York Reduced rates for automobiles accompanied by passengers EASTERN STEAMSHIP LINES

Goody for Kellogg's! It's matchless flavor and crispness! Flavor that's never been equaled! And Kellogg's are fine for everybody. With milk or cream—and add fruits or honey. Serve them for breakfast, lunch—for the children's evening meal. Made by Kellogg in London, Ontario. Oven-fresh in the inner-sealed red-and-green package. At hotels, restaurants. On dining-cars. Sold by all grocers. Kellogg's CORN FLAKES

LAYING LINOLEUM. Cementing linoleum is much better than the old way of tacking it down. The first cost may be more, but linoleum cemented in place will wear many years longer than that which is tacked. Water-proof cement makes the seams water-tight and this keeps the linoleum from becoming rotten along the seams. A lining of felt under the linoleum makes the floor warmer and softer to stand on and even the surface of boards. Linoleum cemented over felt can be taken up without injury.

THE SLEEK EXULTS



MY LUCKY DAY

She says to me "This is so SUDDEN," and what does she mean "Sudden"? Here's yours truly been fiddlerin' it out for weeks past, losin' sleep, appetite and AVOIRDUPOIS dopin' out how, where, and in what manner to spring the flaming QUESTION, and she says "This is so sudden."

But she says, "Yes, honey, I will," and this is my LUCKY DAY.

When you look at me, and then look at her, you might think she had BATS in the BELFRY, to take a chance like that—I'm not arguin' the point. All I say is, if you're aimin' to become somebody's sweet lovin' POPPA, you've got to say it with GANONG'S.



Ganong's CHOCOLATES

Sold By T. F. White H. L. Worthy Coffin & Co. Alec. McPherson