

The Western Guardian

—IT PAYS to buy in this Province

—MEN'S UNION KNIT GREY SOX, sold previously at 23c, on sale special 2 pairs for 35c. SINCLAIR & STEWART LTD. 1253-6-27M2E11

—CLOSED.—The store of R. T. Holman, Limited, will be closed all day next Monday, July 2nd (Dominion Day). 1251-6-27ME21

—WOMEN'S FANCY COLLARS, assorted styles, selling at manufacturer prices 15c and up to \$1.00 each. SINCLAIR & STEWART LIMITED. 1253-6-27M2E11

—SUDDEN DEATH.—Mr. Hugh MacKay, of Kensington, received the sad news by telegram on Saturday last, that his sister, Mrs. Frank Gibbon, had died suddenly at her home in Boston. Mrs. Gibbon had lived in Boston for about twenty years. K

—SCHOONER REPAIRS.—The schooner Marguerite, Capt. Doucette, is fitting up and renewing rigging, preparatory for sailing to the Miramichi, where she will load a cargo of lathes for New York and on the return trip will bring back a cargo of anthracite coal. H

—FOUND OLD COINS.—However it may fare with other war productionists at Summerside, says the Island Farmer, Mr. Fred Wright has already raised something worth while whilst digging up a piece of land which had not been cultivated in the memory of the oldest inhabitant. In fact, he thought at first that he had hit upon Captain Kidd's long sought treasure. It may be so yet; but, despite the usual Summerside eye for cash, he has only yet unearthed two coins. They are, however, curiosities and may or may not be worth a lot of money as such, though not negotiable through the ordinary channels of finance. They are of copper, a good deal larger than the ordinary cent. There is on one what looks like a pine tree, but nothing else is decipherable. On the other it is possible to make out the words "Public Accommodation," and the date, "1815." Owner, we presume, may have same by proving property and paying for this ad.

—LUMBER.—The three masted schooner Cora M. Miller, master, sailed north on Tuesday to take on a cargo of lumber for the port of Stanley Bridge. H

—WOMEN'S WHITE CANVASS PUMPS, leather heel, braided bow. Cash value \$1.65 special for this week per pair \$1.39. SINCLAIR & STEWART LIMITED. 1253-6-27M2E11

—MEETING OF AUTOISTS.—A special meeting of the Prince County Automobile Association was held at Summerside on Monday evening. Mr. Creelman MacArthur presiding. The committee appointed to look after the marking of the roads reported that the government would see to this, and was instructed to keep in touch with the work and see that it was carried out. Mr. MacArthur reported as to the work done on the roads last Wednesday and stated that similar work was needed to be done on roads east and west of Summerside. It was moved by Dr. Tanton and unanimously resolved that the Association pledge itself to assist the government officials, Sheriff Wright and Chief of Police Oakes, in the prosecution of all lawful complaints against all owners or drivers of cars, irrespective that they be members of the Association. A discussion took place regarding tourist motor traffic and it was proposed to present all visitors arriving with autos with a copy of the laws regulating the running of cars in this province. The Secretary was instructed to co-operate with the Provincial Association at Charlottetown to endeavor to obtain the lowest rates possible on autos owned by tourists coming to and leaving the province on the boat; also to write the government for full information regarding tourists' licenses.—Farmer.

—THE NORTHUMBERLAND.—The Northumberland docked at 9 o'clock Tuesday evening the cargo consisted of two cars lime, one car cans, six cars way freight, four autos, including a Studebaker and a Mitchell, also a band of two wagon loads of Gypsies with their equipment. Part of the outward cargo Wednesday morning was twentythree head of cattle shipped by Mr. E. Wedlock, Hunter River, to the Halifax market. H

—WESTERN PERSONALS
—Mr. Pope L. MacMahon who has been attending Laval University, has returned to his home in Kensington for the summer holidays. K
—Mr. Frank Long, of Long Bros., Charlottetown, who dealt extensively in hides and wool, visited Kensington in the interests of his business. K
—Mrs. William Craig returned to Summerside on Tuesday after an absence of four months in New Glasgow, N.S. H
—Miss Mabel McDonald, Mill Valley and Miss Margaret Elliott, Elliott Mills, were visiting in town on Tuesday. H
—Mr. and Mrs. Hubert Reeves, of Preetown, Mr. and Mrs. John McLure, Bradabane, and Mrs. M. McInnis, Pleasant Valley, were in town Tuesday. H
—Mr. Robert Dunphy of Kensington, mail carrier on the Kensington-Malpeque route, was stricken with appendicitis on Friday last. He is being attended by Dr. E. G. Gillis, and hopes to be about again in the near future. K
—Mr. William H. Murphy, of Boston, returned to his home in Sea View on Monday night, called home by the illness of his mother. Mr. Murphy had been absent from P. E. Island for sixteen years. He is shipper in the United States Leather Co.'s wholesale house, on Atlantic Ave., Boston. K

DR. DE VAN'S FRENCH PILLS A remarkable Remedy for Women. 50 a box of three for \$10. Sold at all Drug Stores, or mailed to any address on receipt of price. THE SCOBELL DRUG CO., St. Catharines, Ontario.
PHOSPHONOL FOR MEN. Restores Vitality; for Nerve and Brain; increases "gray matter"; a Tonic—will build you up. 50 a box, or two for \$5, at drug stores, or by mail on receipt of price. THE SCOBELL DRUG CO., St. Catharines, Ontario.
Sold by George E. Hughes

—MR. W. K. MCGOUGAN is Guardian representative in Summerside. 4950-3-22M31.

—FUNERAL TO-DAY.—The funeral of the late Mrs. Herbert Hogg will take place today (Thursday) from her home at Kelvin, to the Kensington Cemetery. H

—SHINGLES.—The schooner Sarah P. Ayers, Capt. Cain, arrived from Gaspe, P. Q., on Tuesday with a cargo of shingles for Mr. R. J. McNeill, Tyne Valley. H

—HARD COAL.—The schooner White Bird, Capt. Trombly, has finished discharging cargo and sailed for Point du Chene to load hard coal for the port of Alberton. H

—BIG VALUES IN BOYS' SUITS for this week. Norfolk Tweeds up to 28 at \$3.95, larger sizes to 33 special at \$4.95 per suit. SINCLAIR & STEWART LIMITED. 1253-6-27M3E11

—THE STORE OF R. T. HOLMAN, LIMITED, Summerside, will be closed each Wednesday afternoon at 1 o'clock during the months of July and August. 1253-6-27ME31.

HOLMAN LTD. SUMMERSIDE, P.E.I. ESTAB. 1857 THE BIG MAIL ORDER HOUSE

HOLMAN'S CATALOG

Brings the Store to Your Door

Charming New Style Middies and Wash Suits Lowly Priced



Study Every Style

Make Your Choice Now

CHARMING MIDDY BLOUSE
No. 1301—A decidedly smart style in a Woman's White Middy, made from a good grade special middy cloth, three-quarter sleeves, fitted with belt, has navy and white or cadet and white striped sailor collar, with cuffs and pocket trimmed to match. This is one of the noblest styles shown this season. Sizes 34 to 42. Price 1.45

Nothing Nicer For Summer Wear

Quality is in a Class by Itself

No. 1302—A very pretty style of Women's White Middy, made of a special grade serviceable middy cloth, with navy blue sailor collar white braided trimming on collar and pockets; three-quarter sleeves, sizes 34 to 42. Price.....\$1.15

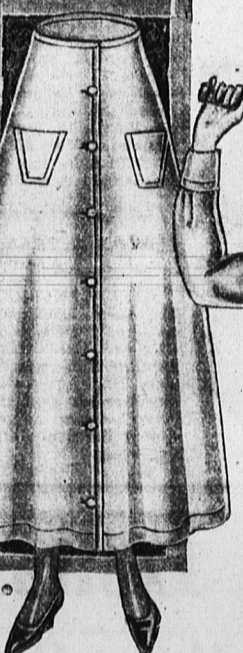
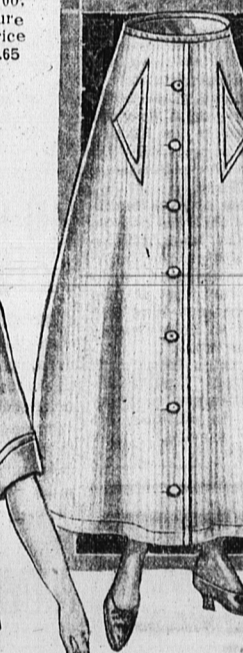
No. 1250—A special quality in a Woman's All-White Middy buttoned all way down front, closed with white pearl buttons, fitted with belt; has long sleeves, deep collar, and is in every way a trim tidy garment. Sizes 34 to 42. Price.....\$1.45



No. 1304—Special price on Women's White Middy. Special quality middy cloth striped sailor collar in navy and white or cadet and white 3/4 sleeves. Sizes 34 to 42. Price. .88c

No. 1306—A very pretty style of middy cloth, fitted with belt, has fancy pockets and straps from shoulder to belt at front. Pearl button trimming 3/4 sleeves. Sizes 34 to 42. Price. \$1.35
No. 709—Women's white Pique Wash Skirt, made same style as No. 703, waist measure 23 to 28, length 37 to 40. Price \$1.35

No. 791—Out size white Pique Wash Skirt for stout women same style as No. 700, without pockets, waist measure 30 to 36, length 40 to 42. Price.....\$1.65



No. 1303—Extra good value in a woman's All-White Middy, good quality middy cloth, finished with deep sailor collar, three-quarter sleeves, two pockets trimmed with pearl buttons, sizes 32 to 42. Price.....98c
No. 1303 1/2—Same as above with long sleeves sizes 34 to 42. Price.....\$1.10

No. 700—A very pretty and serviceable quality White Pique Wash Skirt, buttoned down front with white pearl detachable buttons. These buttons may be removed for washing. This skirt is also finished with two neat style pockets; will be found decidedly serviceable for summer wear. Waist measure 23 to 28, length 37 to 40. \$1.65

No. 703—Women's white Repp Wash Skirt, buttoned down front and closed with detachable pearl buttons that may be removed for washing. This is a sensible, serviceable garment at a low price. Waist measure 23 to 30, length 37 to 40 Price \$1.10

No. 705—Women's white Repp Skirt finished with two neat pockets, buttoned down front and closed with white pearl buttons that can be removed for washing. This material will wash and give good wear. Waist measure 23 to 30. Price.....\$1.25

No. 1241—Women's All-White Middy, a splendid quality middy cloth, fitted with deep sailor collar, breast pocket, long sleeves laced at sides. Sizes 34 to 42. Price.....\$1.10
No. 1241 1/2—Same style as above, 3/4 sleeves, sizes 34 to 42. Price each. .98c

Hay Hay

We have just received into Warehouse Several Cars of Choice Hay which we offer at the following low prices
In Ton lots, \$18.00 per ton
In 1-2 Ton lots \$19.00 per ton
By the Bale \$1.00 per 100 lbs.

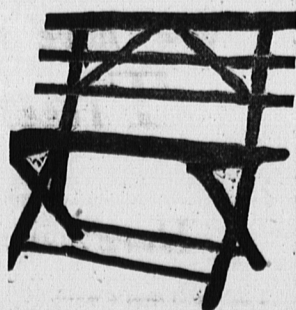
We have just received another shipment of Straw, also Feed Oats, Bran, Middlings, Oil Cake, Cornmeal, Cracked Corn, Crushed Oats, Calf Meal, Scratchd Feed for Poultry & C. all at lowest prices. All goods delivered at Railway, Steamers or any part of the city free.

Carter & Co. Ltd.

Queen Street Warehouse
1223-6-26ME11.

A LOW FACTORY

Price Folding Seats **99c**



Here is a Value that You Should Grasp Immediately

Mail or Phone Your Order Without Delay

A smashing low price for a very limited time on good quality FOLDING LAWN SEATS.
This particular style would cost more today from the factory in car lots than price at which we are selling them.
It will pay you to get all that you think you want while this price is in effect—and don't delay—don't hesitate; while we have more than 60 on hand we cannot guarantee how long these will last, as the price and quality of the chairs will create a phenomenal demand
Made of best selected beech stock, frames painted and varnished; slats securely screwed to frames; length 3 1/2 feet; folding style—will suit verandah or lawn. Sold by many stores at \$2.00—our special sale price, each99c.
There is only one way to make sure of securing some of these at the price quoted, and that is to send us your order promptly.

R. T. HOLMAN Limited

SUMMERSIDE
1246, 6-27M3E21.

Women's Summer Dresses and Girl's Middies

No. 783—A very low price on a Woman's Wash Coat Dress, made of plain Zephyr in sky, pink or Copenhagen, finished with black and white diagonal trimming on the edges of the coat, belt, collar, pocket and sleeves. Sleeves are three-quarter length, the circular collar is closed with white pearl buttons. Sizes for 16 to 18 years women's sizes 43 to 42 in bust measure \$2.98

No. 640—A dainty new style in a Woman's or Misses' straight line pleated Wash Dress. This style is one of the season's very latest models. Finished with deep belt of fancy white satin stripe pique, pointed patch flare pockets also finished in white to match belt. Has square sailor collar of same material as belt. Long sleeves finished with cuffs also trimmed with white to match belt and collar. Closed at front with large white pearl buttons. Colors rose and white, Copenhagen and white, tan and white; also shown in plain white with rose trimming. For ages 16 to 18 years; also women's sizes, bust measure 34 to 40 inches. Price.....\$3.65

No. 503—A thoroughly up-to-date style in a Woman's fine Zephyr Voile Wash Dress. The effect is new and nobby. Dress comes in three colorings, black and white narrow stripe, sky and white or pink and white. Finished with hemstitched Grenadine girde, has wide sailor collar with wide shapely revers; cuffs, girde and pocket effectively trimmed to match. Long sleeves. This is a decidedly new model, and the material will give the very best service and satisfaction. Sizes 36 to 40. Price.....\$3.95

Girl's Middy 49c
W600—Girl's Middy Blouse of white drill finish English Cambric, large sailor collar edged with plain blue, short sleeves with cuffs which are trimmed with plain blue to match; blue lacing at front. Sizes for ages 5 to 10 years.49c

Girl's Middy 75c
No. 250—A popular style white Middy Blouse for girls, made of fine drill material. Has patch pocket on front, sailor collar of blue and white stripe, also plain blue or plain white collar; finished with lacing at front. Three-quarter sleeves. For ages 6 to 12 years. Price.....75c

HOLMAN'S---The Island's Biggest, Best and Busiest Store

1250-6-28ME21
FLOUR, SUGAR, EGGS AND BUTER EASIER. Sugar Market, However, is Firm Despite Decline— Cheese Holds Steady.
TORONTO.—The following comment on the market situation as regards foodstuffs appears in the Canadian Grocer:
With a sagging tendency in the wheat market during the week flour was in a weaker position. Demand for this commodity is light in the face of the fluctuating market. Some Ontario mills are shipping flour into the United States and this is keeping them fairly busy. Demand for millfeeds is lighter on account of the excellent grass pasture for stock at present. Sugar declined 15c. per hundred
Local demands is still very light. Reports of the sinking of 40,000 tons of sugar in ten days by submarines has put a measure of firmness in the market by reason of the fact that supplies have been decreased by that much. The rainy season has now set in on the island of Cuba and production of raw sugar will diminish from this time forward.
Butter and eggs were in easier market, in the latter commodity considerable declines being recorded, due to the unexpected increase in production. Cheese held steady at recent prices, but there was a disposition on the part of dealers to pay slightly more to the factories for their output. Demand for poultry is light and prices on live hens and spring chickens have been easier in consequence.