

DURING OUR January Clearance Sale

A large number of our Specials were completely sold out, we have decided to clear out all balances, with a few more specials added at still lower prices. This special effort will last

ONE WEEK ONLY ENDS SATURDAY JAN. 22nd

Get in on these values:-

Balance of all Ladies' WINTER COATS 1/2 PRICE

Balance of all Ladies' SUITS, Clearing LESS 1-3 OFF

Balance of all Children's COATS, Clearing LESS 1-3 OFF

Balance of Teen-Age DRESSES, \$17.95 to \$14.95 clearing for \$9.95

Balance of Ladies' DRESSES further reduced, \$11.95 to \$16.95, for \$6.95

Balance of Ladies' Flannel HOUSE COATS, clearing LESS 25%

Balance of WOOL COATING and DRESS GOODS, assorted colors, 54 in. wide, clearing LESS 1-3 OFF

See our table of Soiled Goods, consisting of Kiddies' Kimonos, Jackets, Blouses, Skirts and Sweaters; also Ladies' Sweaters and Snuggies, clearing at 1/2 PRICE

Balance of Kiddies' DRESSES—wool, plaid, rayon, and corduroy 1-3 OFF

CRETONNE SPECIAL, assorted patterns. Regular value up to \$1.25 Clearing for 75c Yard

TOWELS, striped Hand Towels, clearing for 55c A Pair

BEDSPREADS, colors rose and blue. Reg. \$3.95 for \$2.95

Remnants of Curtaining Cretonnes, etc., at Greatly Reduced Prices

SPECIALS FROM MEN'S AND BOY'S DEPT.

Men's Mackinaw COATS, navy blue, fur collar, and assorted plaids—Out they go less 25% DISCOUNT

Men's STATION WAGGON COATS, clearing LESS 1-3 OFF

Balance of Boys' SNOW SUITS, clearing for only \$7.95

FUR ROBES—Special Montana Robes, clearing at Special Prices

Balance of Heavy Horse Rugs LESS 1-3 OFF

Plastic STAIR TREADS, 9 x 18 inches. Special 12c each

DRAPERY MATERIAL, 48 inches wide, assorted designs and colors. Worth up to \$2.25 per yard, clearing at \$1.29 a yard

Heavy Quality Net Ruffled CURTAINS, 42 in. x 2 1-4 yds. Regular \$6.00 for \$3.25

LOOK FOR THE RED TICKETS—SPECIALS ARE MARKED THAT WAY

PROWSE BROS. Ltd.

FOR GOOD VALUES

OUT OUR WAY

By J. R. Williams



DON'T TELL ME A DOG HAS GOT ANY BRAINS--HE BUILDS HISSELF UP ONTO A BIG HIGH PEAK AN' THEN EXPECTS TO HIDE WHUT HE'S DOIN' ON TH' SLY!

WELL, DON'T SOME BIG PEOPLE DO THAT?

JR WILLIAMS 1-10 THE MONUMENT

THE EASTERN GUARDIAN

AGENTS: MONTAGUE: Harold F. Landry, Albert Aitken, Mrs. Byron Stewart, Miss Harriet Clair. GEORGETOWN: Waldon Lavers. AGENT SOUBIS: Francis Cheverie

The Guardian may be bought at any of the following places in Montague: Miss S. A. Llewellyn; Mrs. O. J. in Georgetown: The Post Office; in Soubis: Condon's and Florence Roper; in St. Peter's: The Post Office.

Mr. William Ives, insurance agent was a recent business visitor to Montague where he called on his many friends.

Mr. and Mrs. Henry MacLaren, Charlottetown, were visitors to Montague on Friday where they visited friends and relatives.

His many friends will regret to learn that Mr. Sandy Reynolds, owner of Sandy's Tailor service, Montague, is a patient in the Prince Edward Island Hospital.

Red Cross classes in first aid are being resumed at the Montague High School under the direction of Mrs. H. Cudmore. The classes were begun before the Christmas holidays, but were discontinued during the holidays. The course is for instructors certificate, and at the conclusion of the course those who pass successfully, may teach first aid to any group deserving the knowledge. The course comprises both practical and theoretical knowledge, and films depicting various matters on the course are used. Approximately twelve are taking the course which will conclude in a few weeks.

The 25th. annual meeting of the Montague United Church was held in the church on Wednesday evening with a good attendance. The meeting opened with a devotional period led by Rev. A. S. Adams. Rev. Adams reviewed briefly the work of the past year, and congratulated the board of stewards for the work they had accomplished. Mr. Charles Fraser acted as chairman of the meeting and Dr. L. A. Johnston, the Secretary, read the minutes of the last annual meeting, which were adopted as read. The following reports were given:

- Report for Session — Rev. A. S. Adams
C. G. I. T. Report — Barbara Mahon
Sunday School — Charles Fraser
W. M. S. — Mrs. E. G. MacKinnon
W.M.S. (Whim Road) — Mrs. H. Vickerson for Mrs. Moar.
Y. P. G. — Mrs. Charles Fraser.
Ladies Aid — Mrs. Horace Fraser.
Ladies Aid (Whim Road) — Mrs. M. MacLaren for Mrs. Campbell.
Ladies Aid (Lower Montague) — Mrs. J. Storey.
Lower Montague Sunday School — Mrs. Les MacDonald.
Baby Band — Mrs. Lester MacLeod.
Lower Montague Church — Mr. Vernon Rose.
Missionary Band — A. Hume.
Financial Report — A. Hume.
Choir — Mrs. Russel MacDonald.
Mission Band — Mrs. E. G. MacKinnon for Marilyn Llewellyn.
Mr. Douglas Coffin and Mr. George Nicholson were elected as plate collectors, and Mr. Charles Fraser and Mr. G. Lake were elected as ushers. A number of members were extended votes of thanks in recognition of their fine work during the past year. On the whole the year was most successful, and many repairs and alterations being done to the church, such as a new lighting system, repainting of the church, a new church shed, and many other items. The meeting was brought to a close when the ladies served a delicious lunch. Following the lunch a social hour of singing songs was enjoyed.

CHATEAU SINISTER

By Leslie Beresford
From a nearby village, they luckily caught "bus" for Falmouth, and there established themselves at an hotel near the harbour. They had still many hours to wait. O'Hara calculated before the car with Hussein and Caryl had covered the same distance by road. So they dined needfully, trying not to feel too heavily the stress of impatience and anxiety as to the outcome of this mission which had brought them. It was agreed between O'Hara and Rittenberg that they could take no pre-arranged course, must act entirely on the spur of the moment, as circumstances allowed.

NEW MONT ROSA EVERBEARING RUNNERLESS DWARF BUSH STRAWBERRY

Fruit from seed the first year; easily grown Bush form, about two feet high. No runners. Hardy perennial. Bears abundantly from early summer till killing frosts. Fruit is more luscious than the common strawberry, rich in vitamins, and makes it highly ornamental as well as valuable in vegetable, fruit or flower garden, borders, etc. A showy plant too. Though smaller than commercial strawberries Mont Rosa is the largest fruiting of any variety we know from seed, surpassing the popular strawberry and similar fruit in size both form and exquisite flavor place it in a class by itself for every home garden. Seed supply is limited. Order early. (Pkt. 25c) (3 pkts. \$2.00) postpaid. FREE OUR BIG 1949 SEED AND NURSERY BOOK. DOMINION SEED HOUSE, GEORGETOWN, P.E.I.

FARMERS and HOUSEHOLDERS

We can supply your every need in machinery, barn, and household plumbing. We have now in stock deep and shallow-well water systems, both gas and electric driven. Pressure tanks of all sizes. Galvanized Pipes, Galvanized and Brass fittings. Complete stock of bathroom fixtures and plumbing supplies. Beatty water bowls. Barn equipment. Enterprise stoves and rangers. Coleman Oil Burning heaters. Call in and inquire about your plumbing job. All work guaranteed.

MacLeod and Greene

Montague



Money Orders

... THE SAFE, SURE WAY TO SEND MONEY

MONEY transfers can be obtained conveniently and quickly by Canadian Bank of Commerce Money Orders. Inexpensive, and readily made safely and easily when transacting your other Bank business—at any of our branches. Money Orders. Inexpensive, and readily made safely and easily when transacting your other Bank business—at any of our branches. Next time you send money, send its part of the world, they may be equivalent—a Canadian Bank of Commerce Money Order.

THE CANADIAN BANK OF COMMERCE

CHARLOTTETOWN BRANCH—R. S. P. JARDINE, Manager.

for Hussein to find us here. He'll never have expected that." "Nor will Caryl," O'Hara commented. "If it hadn't been for the tip you gave us, Virginia, we couldn't have suspected in the least that she could be with Hussein." "I can't understand now why she should be with him," he added. "I don't see how it can be of her own free will. Some way or another, he's forced her into it. Either he's—so to speak—hypnotized her, or—she's said or threatened to do something that's literally cowed her into coming here with him." "I can tell you this, Michael," Virginia broke in on his petulant puzzled tones. "Caryl's never been frightened of him for her own sake. Time and again she's told me that, both in the Chateau and in London. If she was scared of him at all, it was in case he harmed other people on her account." "That's probably it," Rittenberg nodded. "Now I remember, after I'd told her about Andrew Payne being really alive, she seemed suddenly to change her whole attitude. She said she was going to get in touch with Hussein, he was the whole thing out with him. It wasn't long after that, he came through on the phone and she asked him to join us out at 'Riverside'."

"And there he must have put in some good work with that suave tongue of his!" O'Hara muttered viciously. "I noticed that there was some obvious sort of understanding between them. I only wish I'd guessed then what it might mean. No doubt he persuaded her to this trip, letting her understand he knew about Payne, too, fooled her with some promise."

ATTENTION POULTRY PRODUCERS

For Sale—Between Feb. 10th. and Feb. 24th., large quantity of day-old Cockerels, New Hamps and Hybrids, suitable for American market. Price 8c each. Considerable quantity can be raised as capons at contract price. Apply: Central Egg Grading Station, Charlottetown or Wheatley Bros., Charlottetown, P.E.I.

BABY CHICKS

NOW is the time to order your Baby Chicks for this season.

RECORDS show that February and March Chicks have been the most profitable in past years. They will be this year.

OUR U. S. A. market connections are your assurance of satisfactory prices for Poultry meat in 1949. Eggs are always highest from September to December. Only early hatched Pullets can produce them at that time.

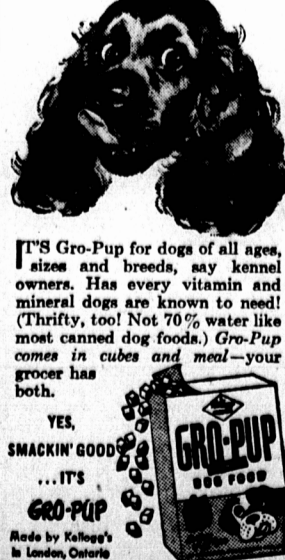
OUR new Hatchery is now prepared to give you the highest quality Chicks that can be obtained. Some of our flocks have been highest winners at P. E. I. Exhibitions for many years. We can supply all popular breeds and cross-breeds at the following prices—Pullets 32c; Mixed 17c; Cockerels 8c.

REMEMBER: Our Chicks are STRONG, HEALTHY and STURDY. They LIVE, GROW, LAY and PAY. Contact our office at once.

ISLAND CHICK HATCHERY

Box 192 71 King St. Phone 780-J Charlottetown

"Smackin' good... it's GRO-PUP"



It's Gro-Pup for dogs of all ages, sizes and breeds, say kennel owners. Has every vitamin and mineral dogs are known to need! (Thirty, too! Not 70% water like most canned dog foods.) Gro-Pup comes in cubes and meal—your grocer has both.

YES, SMACKIN' GOOD... IT'S GRO-PUP Made by Kalgro's in London, Ontario