

How Old Is Your Will?

The big merchant princes of Canada and the United States realize as a matter of business the importance of making their Wills, thereby directing the distribution of their estates both before and after death.

History has told us that these same men have appointed trust companies as their executors. Why? Because the returns by reason of experienced, efficient and economic handling will be greater.

Changing conditions from time to time make it necessary to redraw a Will, possibly adding thereto a young child as beneficiary or eliminating therefrom one who has become deceased.

Is your Will up-to-date? If not, have it redrawn at once. This Company's officers will be glad to render any possible assistance.

DOMINION TRUST COMPANY

The Perpetual Trustee
PAID UP CAPITAL
and undivided profits over \$3,000,000
TOTAL ASSETS
Controlled by Company \$18,896,000
AND
Trustees for Bondholders \$26,518,000
Advisory Board
W. H. Aitken Hon. Chas. Dalton
Frank R. Hertz
H. M. Davison,
Manager.
Morris Block Charlottetown

Amateurs

Get your photos finished at

Cook's Studio

Dainty New Styles for Dressy Women

Here from New York—by express and by parcel post—have arrived some of the most beautiful distinctive models in women's boots that you have ever seen at ALLEY'S—and that means a lot.

You'll be especially pleased with these.

Pat. Vamp Buttoned, Black Brocade Back, new Spool Heel.....\$6.00

Pat. Vamp Buttoned, Black Cloth Top new Kidney Heel.....5.00

Pat. Buttoned with turn sole, Red Satin lining a light dressy boot.....5.00

Pat. Vamp Pump Black Brocade Back new heel and toe.....5.50

Alley & Co

New Silk Waists at Stanley Bros. 2643-5-27M3i

LIME

Landing today per Schr. John Millard 400 Barrels St. John Lime.

C. Lyons & Co.

To The Amateur Photographer

We have placed in our studio two new washers for films and prints. These with our up-to-date methods we can give you best results.

Bayer Studio

107 Queen St. Ch'town Artistic Photography, Enlargements, Developing and Printing for Amateurs, Picture Framing &c.
THE ACORN STUDIO
SOURIS
2345-5-131p61dM

New English Dogskin Gloves for ladies 90c pr. at Stanley Bros. 2643-5-26M3i

Expert Optical Service

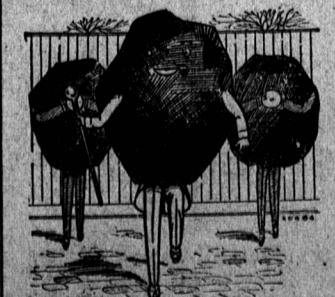
Our business is to examine eyes. We aim to give our patrons the benefit, the most modern and approved methods of examination.

That our services are appreciated, is evidenced by the large increase in this year's business.

We guarantee to give you the best results obtainable by the use of properly fitted lenses.

G. F. Hutcheson

99 Grafton St. Optician



Our Coal Is In The Lead

We are now ready to grant orders for cargoes of coal, to be delivered by steamer or schooner, during the coming season. Parties requiring same are requested to book their orders with the undersigned, who are Selling Agents for Dominion Coal Co. coal for P. E. Island.

Buntain Bell & Co

Wholesale and Retail Coal Dealers Agents for Dominion Coal Co. Ltd. Agents for Black Diamonds, S. C.

THE EASTERN GUARDIAN

FOXES FOR SALE. Apply to George Keefe, Souris. 2426-5-19M4t

T. GORDON IVES is Guardian Agent in Montague.

THE MORNING Guardian can be obtained in Souris at H. J. Mahon's.

THE MORNING DAILY Guardian can be obtained at W. A. Johnston's, Montague.

MR. ED. D. FEEHAN Guardian representative in Souris will gladly receive subscription and advertising matter at the office of undertaken.

SUBSCRIBERS should renew a week or two before the time they have paid for has expired and thus not miss an issue, as all papers are discontinued promptly on expiry date.

MONTAGUE PRESBYTERIAN. Rev. Mr. Back, of Georgetown, will preach in the Presbyterian Church, Montague, on Sabbath the 30th, at 3 o'clock, in the afternoon. The regular pastor, Rev. D. Wright, is in Nova Scotia, and will not be home for the 30th, but will go first to the Assembly.—B.

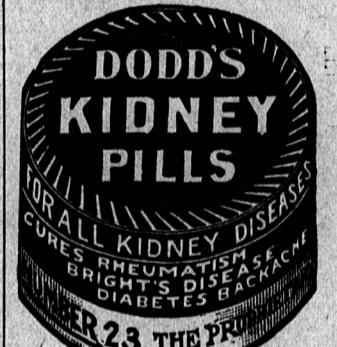
HOTEL ARRIVALS

REVERE HOTEL

M. D. McLeod, Halifax; E. Stewart, Sydney; S. Pineau, North Rustico; R. M. Shaw, Boston; J. H. Quirk, Sydney; K. E. Jamieson, Canada; N. S.; T. M. Howatt, Coleman; M. G. Dawson, New York City; T. L. Dawson, Coleman; Father Chasson, Rustico; M. L. Fraser, Summerside; G. Del Smith, Monton; W. C. McDonald, St. John's; W. H. Follock, Toronto, Ont.; D. Shreanan, Pembroke; B. C. C. H. Good, New Glasgow; N. S.; J. P. Smith, Kinross; J. Mullins, De Sable; J. H. Lord, Edmonton, Alta.; D. Stelle, Summerside; H. J. MacCormac, Hillsboro; Frank Howatt, Cape Travers; M. Guinness, Detroit, Mich.; Calvin Howatt, Victoria; Gordon W. Dawson, Cape Travers; F. H. Delaney, Magdalen Islands.

HORSE NOTES.

Saturday morning when John Cameron, the genial Great George Street, barber, went into the stable, he found that his carriage mare, Lou Creston, had presented him with a foal. This youngster was sired by Prince Marjor, the green Moko stallion owned by J. H. G. Murphy, and is the first get of his on the island, although it is expected that six more will arrive soon. This son of Lou's is a beauty, with a nice legs, strong back and a beautiful head. He certainly has the breeding too, being closely related to Lou Dillon. This Harvester, Creston and is a grandson of the famous Moko, who sired such good ones as Brenda York 2:04, Ferino 2:05, Native Belle (3) 2:06, Susie N (3) 2:09, and Silver Silk (4) 2:08.



Reliable watches, Accurate clocks, Artistic Jewelry, Up to date silverware, &c. &c. at C. W. Patterson's Cor. Gt. Geo. & Grafton Sts.



The World-Wide Fox Exchange Montague P. E. Island Offers for sale: Options on Western Foxes (Island born). Options on Class A Foxes. Stock in Fox Companies that will pay a dividend this season. Correspondence solicited.

PEOPLES THEATRE TONIGHT

Bethulia a peaceful little walled town guarding a rocky pass leading to Jerusalem is besieged by the Assyrian hosts under Prince Holofernes. All half reduced by starvation and thirst amid heartrending conditions the devoted widow Judith, arrays herself in splendid attire and by her woman's wit and witchery decimates the enemy's ranks into an unguarded moment when with her own hands she liberates her people.

This is the story in short, although in the telling of it some of the most remarkable heights of dramatic art and amazing spectacular effects are introduced. All the best players of the Biograph and affiliated companies, a host of 500 armed men, three hundred horses, chariots, \$25,000 worth of walled fortifications, and an engine of war and a wealth of Jewish costumes give the drama a vividness and substantial effect hardly to be imagined as other than the real thing.

Judith of Bethulia is a classic. It is Biblical and therefore of unusual educational value. The exquisite scenes in the peaceful villas of Judea prior to the invasion quickly transformed into bloody battle grounds when the Assyrians swept down on the fold, the tyrannies of the oppressor and the fortitude of the Bethulian people present a picture story that grips the heart and rivets attention. Clergymen, artlovers, literate folk, and all who like better more elevating entertainment, should not fail to see this triumph in motion pictures tonight and Saturday at the People's Theatre. Five cents to all.

FOX STOCK QUOTATIONS

FURNISHED AND CORRECTED DAILY BY THE FOX EXCHANGES AND INVESTMENT COMPANIES LTD.

Par	Asked
Alberton Dark Silver	100 110
A. E. McLean Co Ltd.	100 115
Belmont	100 100
Beech Wood	50 55
Barkers	100 110
Brighton	100 110
Belfast Fox Co.	50 70
Beech Hill	50 60
Charlottetown	100 175
Carruthers	100 130
alton	100 90
Diazis Pedigreed Foxes	100 150
original	100 100
New Issue	100 125
Dominion	100 125
Inpire	100 105
Eastern	100 105
Freeland	40 60
ur Producers Ltd.	100 100
Great Canada Norther	100 100
Howatt-Dalton	100 100
Ives	100 125
Milton Patch Fox Co.	50 50
Montague	500 750
Mount Edward	100 100
Massachusetts	100 110
North Milton Pedigreed Foxes	100 100
North Trvon Co.	100 125
North Shore	100 100
Provincial	100 105
Park Farm	100 105
Prince Roy	100 125
Freina	10 10
Regal	100 100
R. J. McNeill Co.	5 5
Rayner International	100 105
Rogers Payton	10 15
Record	100 125
Rosemont	100 100
Smith	100 100
Sea River	100 130
Samson	200 200
Souris Black Fox Co.	100 125
Spring Park Fox Co	100 190
Silver Tip	500 1,500
Steele	100 125
Taylor	100 100
Three Rivers	100 115
Tuplin Irving	100 100
rout River	40 45
Inton	50 65
New Haven	25 25
O'Leary Patch	10 10
Crystal	50 55
Prince Albert	100 115

STOCK MARKET

NEW YORK STOCKS

May 28th, 1914.

	High	Low	Close
Atchafson	97 1/2		97 1/2
Am. Beet Sugar	23 1/2	23 1/2	23 1/2
Am. Smelters	63 1/2	63 1/2	63 1/2
Amal. Copper	73 1/2	73 1/2	73 1/2
Brooklyn K. T.	93 1/2	93 1/2	93 1/2
Canadian Pacific	199	198	198 1/2
Chesapeake and Ohio	52 1/2	52 1/2	52 1/2
Erie	29 1/2	29 1/2	29 1/2
Mex. Petroleum	64 1/2	64 1/2	64 1/2
Miss. Pacific	117 1/2	117 1/2	117 1/2
Pennsylvania	111 1/2	111 1/2	111 1/2
Reading	165 1/2	165 1/2	165 1/2
Southern Pacific	94 1/2	94 1/2	94 1/2
St. Paul	101 1/2	101 1/2	101 1/2
Union Pacific	158 1/2	158 1/2	158 1/2
U. S. Stee	63 1/2	63 1/2	63 1/2
Utah Copper	57 1/2	57 1/2	57 1/2

MONTREAL STOCKS.

	High	Low	Close
Brazilian Traction	78 1/2	78 1/2	78 1/2
Canada Cement	28 1/2	28 1/2	28 1/2
Detroit	67 1/2	67 1/2	67 1/2
Dom. Steel Corp'n.	22 1/2	21 1/2	22 1/2
Min. & St. P. (Soo)	126	125	126
N. S. Steel & Coal	57	57	57
Quebec Ry	15 1/2	15 1/2	15 1/2
Richellen & Ont.	97 1/2	97 1/2	97 1/2
Spanish River Com.	9	9	9

OOTTON

	High	Low	Close
Spot—14.50 up 20.	1441	1423	1438
May	1329	1308	1327
July	1278	1269	1273
October	1287	1279	1282
December			

GRAIN AND PROVISIONS.

	High	Low	Close
May Wheat	99 1/2	99 1/2	99 1/2
July Wheat	88 1/2	86 1/2	87 1/2
May Corn	70 1/2	70 1/2	70 1/2
July Corn	67 1/2	67 1/2	67 1/2
May Pork	1970	1970	1970
July Pork	2025	1982	1982
May Lard	972	962	962
July Lard	980	972	972

Canadian Cottons, Ltd. S. P. O.

First Mortgage Bonds Net earnings for past three years approximately three times Bond interest. Rental received from lease of Mount Royal Mill last year over 90 p. c. of Bond interest.

Annual Report on Request ROYAL SECURITIES CORPORATION, Ltd. Bank of Montreal Bld., St. John N. B. H. C. Flood, Manager. Phone M. 2720 Montreal, Toronto, Halifax, Quebec, Ottawa, London, Eng.

Curtain Nets

An assortment second to none in all qualities of white, cream and ecru. Plains and fancys, Bungalow Nets etc. Plain Scrim Satin edge 28c, 32c yd. Plain Marquisette .45c yd. Fancy Nets 23c, 35c to 60c yd. Fancy Bungalows 20c, 40c yd. 30 inch White Madras Finished both edges 28c, 30c yd.

Stanley Bros

The always busy Store

FOR SALE Trotting Bred Stallion Sired by A. G. I. 2,271, dam a producing daughter of Almont Wilks; 4 years old, absolutely sound and kind, fine style, good trotting action, can show 2.25 speed, dark bay, weight 1150 lbs. For further particulars, write, wire or phone. W. S. McKie. 2695-5-29-Mif.

“Shot 1-1 rib Jerseys for summer wear for ladies at Stanley Bros. Particularly suited for golf and tennis players. 2643-5-27M3i

“DID YOU get a Thermos Bottle yet? You will find it a great convenience for the baby, the sick-room, picnics, fishing trips, etc., there's nothing like it. See the lunch kit. E. A. Foster, Central Drugstore. 2658-5-28M3i.

CHARLOTTETOWN MARKETS

Oats (white)	40c.
Oats (black)	45c.
Straw (per ton)	\$6.50
Hay Loose (per ton)	\$17.00
Eggs (per doz.)	19 to 20c.
Print Butter (per lb.)	28 to 30c.
Chickens (each)	60 to 90c.
Tub Butter (per lb.)	25c.
Potatoes (per bus.)	50 to 55c.
Turnips (per bus.)	25c.
Hides	11 1/2c.
Calfskins	13c.
Beef (lb)	10 to 20c.
Beef (quarter)	9 to 11c.
Pork (lb.)	8 to 10c.
Sausages (lb.)	14 to 16c.
Fresh Herring	15c.
Young pigs (per pair)	\$7.00 to \$12.00
Beets	6c.
Onions (lb.)	5c.
Carrots and turnips (doz.)	20c.
Lobsters (per lb.)	15c.

If You Want a "Roomer"

Advertise for one. There are hundreds of men and women who will pay good rent for a comfortable room with good surroundings. Put an adv. in the "classified" columns of The Guardian—You reach a multitude. 1839-4-8metf

Canada Fox Exchange
Canada Fox Exchange

Fox Stock For Sale

1914 Dividend Payers

Shares in the Howatt-Dalton Silver Black Fox Company.

Shares in the Mount Edward Silver Black Fox Company.

Shares in the Massachusetts Silver Black Fox Company.

Shares in the Beechwood Fox Company.

Shares in the Freeland Silver Black Fox Company.

Canada Fox Exchange and Investment Company Ltd.

Stamper Block, Charlottetown, P. E. I. 2685-5-29ME2i.

Canada Fox Exchange
Canada Fox Exchange