

Our Joke Column
SOME SUPPOSITION.



"This is a cold day for July."
"This isn't July. What's wrong with ya?"
"I know it, but supposing it was it would be pretty cold."

TIT FOR FAT.



Those pearls make a lovely birthday gift. Thank you so much. But I have a confession to make. This isn't really my twenty-fourth birthday. I've always lied about my age. Her Husband—That's all right. Those aren't genuine pearls.

HIS ENVIRONS DIDN'T AFFECT HIM.



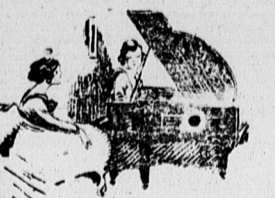
She—I'm sure the surroundings are the deciding factor in character development.
He—Not always. I've known an old fellow who for twenty years rode a water sprinkling cart, yet he was a chronic whiskey ace.

GUARDING HIS OWN.



The Sire—Young man, I demand to know your intentions toward Nora, the cook.
The Son—Oh, just kidding her a little, that's all.
The Sire—All right. Flirt with her and keep her contented, but don't you dare to marry her and take her away from us.

TO DISTINGUISH HER POSITION.



Mrs. Cuddleton—I don't approve of a wife drawing a salary as her husband's housekeeper. That would make a servant of her.
Mrs. Hiram Bower—Not exactly. She wouldn't have to give him a week's notice of her intention to leave.

A LA MODE ON ALL OCCASIONS.



Valer (waking his noble master in the middle of the night)—Pardon me, sir! There's a burglar in the dining-room!
Master—Good! Very good, Perkins; bring my revolver—and let me see what shall I wear? Ah, yes! I'd better show up in my sport suit!

THAT KID AGAIN.



Jimmy (coming running)—Oh, Mrs. Johnson, an automobile ran over your husband on the bridge!
Mrs. Johnson—Oh, mercy! Is he dead?
Jimmy—No; he was sitting under the bridge, fishing.

Hints for the Motorists

BY ALBERT L. CLOUGH

A SIMPLE OIL TEST

Answer: It is better to put pistons back in exactly the positions that they have been running in, because they and the rings have worn to conform with the cylinder bore, which we can account for the failure of your pistons to come down to lowest travel point is that the piston-pin bolts in them are offset that is, not bored through the axis of the piston. If the clearance of the connecting rod with the bottom edge of the cylinder bore had been made very slight, we can see how this offset, if reversed, would cause extra heavy bodied oil is used in engines with loose pistons, as being less likely to seal the plugs, but it is hardly an expedient that is to be recommended.

MAGNETO WON'T START ENGINE

M. W. S. writes: I cannot start my Ford engine on the magneto, although it starts readily on battery and runs all right on magneto, when once started. I have had the coil-units tested and the coil-box connections gone over. What is the matter?
Answer: Probably the magnets have become weak or there is too much clearance between the magnets and coils and the magnets. Possibly the magneto contact needs cleaning. If there were serious trouble with the coil-units or any other of the system, the engine would not run on magneto. When the magneto is somewhat lacking in power, it fails to deliver a spark at the slow speed at which it can be handcranked, but functions well enough at speeds at which the engine turns it. Too wide point gaps at the coils make starting on the magneto difficult, but you say that you have looked after the coils. We suggest that you take your car to an electric service station and have the strength of the magneto tested, by the use of the instrument devised for the purpose, and that you have the magnets recharged, if this proves to be necessary.

REPLACING PISTONS IN CYLINDER BORE

G. T. R. asks: Does it make any difference whether in replacing a piston, it is returned half way around? I had my pistons out to fit new wrist pins, but when I put them back, two of them would not come down on lower center. When I turned them around they worked all right.
R. G. asks: Is there any simple way in which the ability of an oil pump to retain its lubricating properties, under the heat conditions found in an engine, can be tested? Should the quality of the cylinder oil used depend upon the season of the year and upon whether the pistons are tight or loose?
Answer: A sample of first rate cylinder oil, exposed to a temperature of around 400 degrees Fahrenheit, for 15 minutes, should suffer no change except that its color is likely to be darkened noticeably while a sample of inferior oil, subjected to the same treatment, generally becomes almost black and, upon standing for a time, is found to have deposited black sludge. The sample should be contained in a small bottle, placed in sand, packed in a metal receptacle, heat being applied to the latter and a thermopne thermometer used to measure the temperature. If engine temperature is properly controlled, the same grade of oil may be used in all seasons. Sometimes

The Scored Cylinder

A cylinder bore is mirrorlike in smoothness and a few scratches spoil it. A PERFECT CYLINDER bore and its piston, when continuously lubricated, both tend to wear very much in service and, for a time at least, they fit better and better, so that compression improves and the undue escape of oil between them is prevented, but if conditions arise, which prevent the maintenance of a film of suitable oil between the surfaces of piston and cylinder wall, so that the metal of one part rubs directly upon the metal of the other, smooth sliding action ceases and portions of the two parts "die into" one another, roughening, scratching and grooving their surfaces. Often the metal of one part enters that of the other so deeply that the piston cannot be moved in its bore and the engine stops, stuck fast. Both piston and cylinder bore, if badly scored, become unserviceable, as they cannot be made to fit tightly and gases and oil escape excessively between them. A scored cylinder cannot be made to hold compression and therefore is weak and wasteful of fuel. Pistons cost little to replace, but cylinders are expensive and the scoring of one cylinder of a block of four or six, demands the replacing of the whole block—a very costly matter—unless possibly the score can be repaired or, unless, as an alternative, the cylinders are all bored out and oversize pistons are provided for them. Cylinder scoring is therefore one of the most serious accidents that can befall an engine and is to be guarded against only by the avoidance of lubrication failures and of a few other untoward happenings, among which are the following: The too tight fitting of new pistons, which when expanded by the heat of running,

Traffic Development and Rate.

Series No. 3

A pioneer railway such as the Canadian National that has its lines projected across and with a number of branches into new territory in a country like Canada can only expect to at first obtain traffic in such natural products as the country will produce with the least expenditure of capital. Forest products, agricultural products, animal products in their simplest forms, and minerals will initially provide the tonnage and only such quantity of merchandise and manufactured goods will be handled at the early stages of development of the natural resources requires. If a railway is to be successful on the basis of operating for profit it will however eventually require a return from handling its traffic that will provide for the following:

1. The cost of moving the business (Transportation Expenses).
2. The cost of soliciting the business, and other Traffic Expenses, accounting, General and Miscellaneous Expenses.
3. The cost of maintaining its equipment (Motive Power Rolling Stock).
4. The cost of maintaining the roadway and structures.
5. Interest Charges—return on money borrowed.
6. Dividend—return on money invested.
7. Surplus—for further development of the property and other purposes.

The reason items 3 and 4 are placed after item 2 is that a portion of these expenditures may for a time be deferred. The rate structure on this continent has been built up on the basis of fixing rates that would enable the traffic to move. Therefore, in practice a great deal of traffic moves even on profitably operated railways at rates that admittedly will not contribute to all of these seven items. Excluding special coalroads it is probably true to say that coal and some food products could not move if they had to pay a rate that would in itself contribute to even the first five items. Quite naturally it is the high-class freight that is expected to support items 5, 6 and 7 on a railway of transcendent proportions. The low-class freight while covering item 1 may not cover more than a part of items 2, 3 and 4 unless handled in great volume. It is obvious that the Canadian National Railways in the initial years of its development will not obtain much traffic that will contribute to item 5, 6 and 7 and it may not handle enough to have the first four items fully covered. As a matter of fact in 192 the traffic returns of the Canada

Continued on Page Thirteen

squeeze out the oil and scaten in cylinder bore; the too fast or harruling of a new engine, the pistons and cylinders of which have not become smooth in service; the slipping of a wrist-pin so that on its ends projects out of the piston and rubs against the cylinder wall sufficiently to cut a groove in it; a thing likely to occur if it is fastened and allowing abrasiz material to remain by the cylinders after grinding valves.

LEAKING BATTERY

C. K. M. writes: This winter when the weather became cold, I took my battery into the house. A few weeks ago, I noticed some liquid on the floor, and I think that it is some of the acid that has leaked out. Does this mean that the battery has been injured?
Answer: Loss of liquid from a battery that is setting quietly on the floor, indicates almost certainly that one or more of the hard rubber cells has been cracked. The escape of electrolyte will in time expose the plates in the cracked cells to the air and injure them and the acid will destroy the battery box. We fear that you did not protect this battery from the cold soon enough and that one or more of the cells froze and cracked, although the cracking may have been due to a mechanical injury. The quicker you take this battery to a service station and have it repaired the better it will be. Even if it were injured, it would be bad judgment to let it stand all winter without recharging or other attention.

REPLACING BATTERY IGNITION WITH MAGNETO

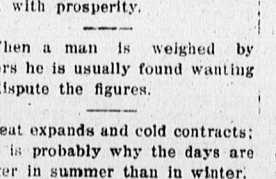
C. E. McA. writes: I wish to install a magneto on my car in place of the battery ignition system, with which it is equipped, but I cannot find any place to locate a magneto nor any means of driving it. Can you give me any help in this matter?
Answer: The magneto manufacturer carefully work out the problem of installing their machines on all cars equipped with battery systems and in many cases are prepared to furnish replacement fittings, so arranged as to make possible such installations. We suggest that you take your case up with the manufacturer of whatever magneto you decide to use, supplying information as to the make and model of your car. It is more than likely that they have your problem already solved, and can furnish you with the fittings required for the change that you propose.

Pointed Paragraphs

No man is as good or as bad as he is said to be.
Half the things people say are regretted later.
Some men find it easier to get drunk than sober.
Some people seem to enjoy hoping for the worst.
As a rule worthless people have the best dispositions.
The man with a lobster appetite as often a prune income.
City soil is said to be superior to country soil for wild oats.
Society women give functions for the purpose of getting even.
The woman who drives a man to drink has no need of a whip.
After a woman says: "There's no use talkin'" she keeps right on.
When trouble drives a man to drink it drives him to more trouble.
The individual who keeps his mouth shut seldom lives to regret it.
Most women work for their husbands, while some others work them.
Every knock one man gives another is intended for a boost for himself.
Some men used to make a rye ace every time they faced a bartender.
A man always remembers his enemies, but he sometimes forgets his friends.
Self-made men do not show up well when compared with tailor-made women.
A hero is a man who can listen to an after-dinner speech without looking bored.
Happy marriages usually result when love is mixed with a little common sense.
Don't waste time finding fault with yourself; that's what your friends are for.
Marrying an heiress is almost unsatisfactory as any other get-rich-quick scheme.
Religion, as a rule, flourishes in connection with adversity and with prosperity.
When a man is weighed by others he is usually found wanting to dispute the figures.
Heat expands and cold contracts; that is probably why the days are longer in summer than in winter.
When a woman says that she has seen better days, it means that she knows cut glass when she sees it.
A Kentucky Journal mentions a "yawning oil well" in that state. Somebody must have been boring it.
Men who think they know it all never take time to investigate the actual worth of their supposed knowledge.
Early to bed and early to rise o most city people would be a surprise—yet many are healthy, wealthy and wise.
A Kansas farmer having heard of a man who successfully raised 2 bills wrote to his congressman for some of the seed.

CORNS

Lift Off with Fingers



Doesn't hurt a bit! Drop a little "Freezone" on an aching corn. Instantly that corn stops burning. Then shortly you lift it right off with fingers. Truly! Your druggist sells a tiny bottle of "Freezone" for a few cents, sufficient to remove every hard corn, soft corn, or corn between the toes, and the calluses, without oozing or irritation.

CHEVROLET

"For Economical Transportation"



- Chevrolet complete line consists of the following models:
- "Four-Ninety" Roadster
 - "Four-Ninety" Touring
 - "Four-Ninety" Coupe
 - "Four-Ninety" Sedan
 - "F B 20" Roadster
 - "F B 20" Coupe
 - "F B 40" Sedan
 - "F B 50" Touring
 - "Four-Ninety" Light Delivery
 - "T" One-Ton Truck, Chassis
 - "T" One-Ton Truck, Express Body
 - "T" One-Ton Truck, Express Body and Eight Foot Top

CHEVROLET "Four-Ninety" Model when delivered to a purchaser is a complete car—nothing to buy to make it serviceable or convenient.

Standard equipment includes every essential found in higher-priced cars.

Compare the power and equipment of this model with other cars selling for more money.

Chevrolet "Four-Ninety" value becomes more apparent through comparison with other automobiles.

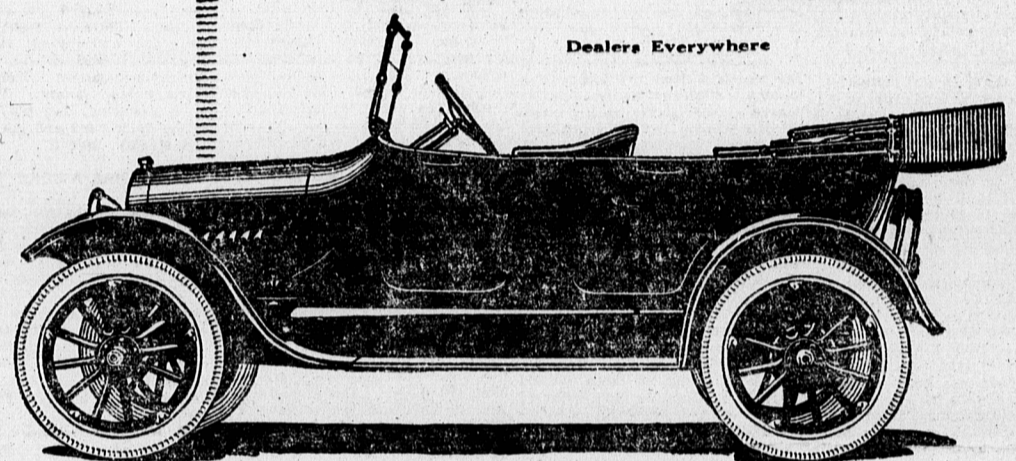
Here are some of the "Four-Ninety" features:—

- | | |
|---|-------------------------|
| Transmission: Selective type hand control | Electric lamps |
| Three speeds—forward and reverse | Demountable rims |
| Speedometer | License holder |
| Tire carrier | Electric starter |
| Side curtains | Complete tool equipment |
| | Extra rim |
| | One-man top, top cover |

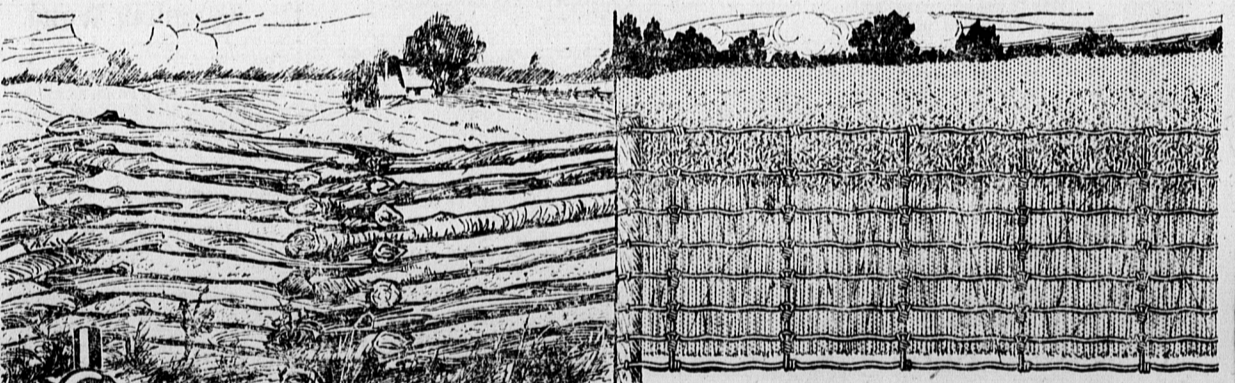
CHEVROLET MOTOR COMPANY OF CANADA, LIMITED

Oshawa, Ont. Winnipeg, Man.

Dealers Everywhere



Chevrolet "Four-Ninety" Touring Car



Turning Two Acres of Weeds into Two Acres of Crop

The average 100-acre farm has from 600 to 800 rods of fence. The old snake fence requires a width of at least six feet. If you have 800 rods of snake fence on your farm you have nearly two acres of valuable land covered by that fence, and those two valuable acres are producing weeds instead of crop.

By tearing down your old snake fences and putting up a Frost Fence you turn those two acres of weeds into two acres of crop, for you can plow or drive a mower within nine inches of a Woven Fence, and use a scythe right under the lowest wire.

FROST FENCE

Frost Fence Wire is made in Canada to withstand the extremes of heat and cold of Canadian summers and winters. Frost Fence galvanizing is permanent. The Frost Tight Lock never slips.

Frost Steel and Wire Co., Limited, Hamilton, Ontario

Manufacturers of Galvanized and Bright Wire, Hay Wire and Bale Ties, Woven Wire Farm and Ornamental Fences. Galvanized Gates, Manufacturers' Wire Supplies. Write for Catalogue.

J. H. GILL, Dealer, Charlottetown, P. E. I.

Smoke
T&B
Put up in all sized packages