

STOCK QUOTATIONS

N. Y. Stock Exchange

Stocks	Close
Am C and F	30
Am Tel Tel	16 1/4
Amalgamated	25
Asaconda	17 1/4
Baldwin Loco	33 1/8
Banking Av	87 3/8
Beaumont	26 3/8
Chrysler	37 3/8
Gen Edison	35 1/4
Gen Elec	50 5/8
Gen Motors	28 5/8
Gen Nor Pfd	34 1/4
Genecott	39 1/4
Mont Ward	15 1/4
N Y Central	20 3/8
Nor Am Corp	38
Phar R R	17 1/4
Phar Pet Co	36 1/4
South Pac	36 1/4
Std Oil N J	42 1/4
United Air	22 3/8
U S Rubber	69 1/8
U S St Co	36 1/4
Vanadium Corp	108 1/4
West Elec	—
Woolworth	—

Montreal Curb

Stocks	Close
Abitibi Com	90
Abitibi Pfd	7 3/8
Asbestos	15 3/4
B A Oil	18
Beauharnois	5 1/2
Bathurst A	12 1/2
Don A	6 1/2
Fraser	9 1/4
Fraser V T O	—
Ford A	17 1/4
Imp Oil	10 1/2
Int Pete	14 1/2
Price Com	13 1/2
Price Pfd	—

Banks

Stocks	Close
Canada	151
Commerco	277
Nova Scotia	165
Royal Bk	—
Montreal	—

Montreal Stock Exchange

Stocks	Close
Bell Tel	156 1/2
Brazilian	6
Can Cement	6 1/2
Can Car Found	8 1/2
Can Car Pfd	21
Can Pacific	6
Can Steamship	4
Celanese	30
Dist Seag	24 3/4
Dom Steel B	9 1/2
Dom Textile	83
Gen Steel Wares	6 5/8
Int Nickel	37
Lake Woods	17
Massey Harris	3 1/4
McCull Front	3 1/2
MIL Power	29 1/4
Nat Brew	29 1/2
Nat Steel Car	43 3/4
Noranda	58 3/4
Power Corp	7 3/4
Quebec Power	18
Shawinigan	18
St of Can	3
St Law Com	—
St of Can Pfd	16 1/4
St Law Pfd	—

FINANCE

By Frederick Gardner
Associated Press Financial Writer

NEW YORK, Oct. 31—(AP)—The stock market today stepped out of October with a rallying swing that carried leading steels and other industrial favorites up 1 to more than 3 points.

Bell Telephone, Walkers and Bradman Fraction, in the Canadian group, showed improvements of 7-8 of a point and less. Losers included International Nickel, Lake Shore and Marconi.

The Associated Press average of 48 stocks ended with an advance of 1/2 of a point at 84.8. A month ago the composite stood at 84.4 and a year ago at 81.3.

Turnover was the largest in the forenoon. There were subsequent downturns, but volume amounted to 1,343,960 shares, a peak since June 12 last. It compared with 674,070 yesterday.

Prominent on the bulge were U. S. Steel, which touched a new 1940 top; Bethlehem, Douglas Aircraft, Sperry, United Aircraft, Wright International, Lockheed, Western Union, American Telephone, Great Northern, N.Y. Central, Standard Oil of N.J., Kennecott and International Harvester.

Insect Control Greenhouse Plants

Like other branches of systematized knowledge, the widespread range of the science of entomology is not generally known. Entomology deals not only with the investigation and measures of control of insects destructive to field and garden crops, fruit and greenhouse crops, forest and shade trees, but also of insects harmful to stored products, to farm and other animals, and to human beings.

The name of insects is legion and each variety entails extensive ramifications of form, practical, theoretical, and laboratory. Hence it is that the recitation, illustration, description, and methods of control of insects affecting greenhouse plants alone, as recently revised by Dr. Arthur Gibson, Dominion Entomologist, and W. A. Ross, Division of Entomology, Science Service, Dominion Department of Agriculture, requires nearly 100 pages to present a comprehensive view of these insects, a mere platoon in the interminable battalions of insect invaders.

Roses, chrysanthemums, carnations, snapdragons, cucumbers, lettuce, and many other plants, as every greenhouse keeper knows, are attacked every year by various kinds of leaf-eating, sucking, or other insects. The loss amounts to many thousands of dollars annually. Much of the loss may be prevented by following the remedies given in

Produce Prices

MONTREAL, Oct. 31—(CP)—Produce Market prices here today, as reported by the Dominion Department of Agriculture, follow:

Butter: first grade creamery prints, jobbing price, 30-30 1/2; first grade solids, jobbing price, 11-11 3/4; Quebec no 1 pasteurized, current receipt price, 29; Quebec no 2, 28; Quebec no 1 pasteurized, fresh and regraded, wholesale jobbing price, 29 3/8; Quebec no 2, 28 5/8.

Cheese: Western white, current receipt price, 13 11/16-7-8; colored, current receipt price, 13 3/4-14 1/16; white and colored, wholesale jobbing price, 14; Quebec white and colored, current receipt price, 13 3/4; wholesale jobbing price, 14.

Eggs: graded shipments in used free cases, selling price, A—large 42; A—medium 40; A—pullets 30; B 27-28; C 19 1/2-20.

Potatoes: Que white no 1 75's 55-70; 2, 45-55; NB mountain, no 1 75's .70-.85; PEI cobbles, no 1 75's .70; PEI mountain, no 1 75's .75.

Market At A Glance

(By The Canadian Press)

Toronto and New York—Stocks closed higher.

Montreal—Utilities and golds lower; papers and other industrials higher.

Winnipeg—Wheat 1-8 cent higher to unchanged.

New York—Cotton, rubber and coffee higher; sugar lower.

WORLD GIRL GUIDES

TORONTO —(CP)—Mrs. Leigh White, Director of the World Guide Association Bureau of London, is visiting various cities of Canada and the United States in the interests of "World Guiding."

General Charles de Gaulle broadcast an appeal to French-Canadians for help to save "the soul of France."

The bulletin "Insects Affecting Greenhouse Plants." Every known insect attacking greenhouse plants is dealt with, control methods recommended and in most cases illustrations have been made from life by Frank C. Hennessey, Artist, Entomology Division, Science Service, Dominion Department of Agriculture. The King's Printer, Ottawa, has copies for sale at 25 cts. each.

Advertising Rates Payable in Advance

Minimum Charge for Any Advertisement 25 Cents

Central Guardian local, 5c per word; Western and Eastern local 3c per word; Announcements and Coming Events 3c per word; Classified 3c per word; in Memoriam Notices 70c per inch; Lists of Floral and Spiritual Offerings, Cards, etc., 5c per name; Letters of Condolence 70c per inch. Wedding engagement 40 words for \$1.00 and 10 cents for every additional 3 words. Notices of Thanks and Appreciation 70c per inch or 4c per word. Lists of Subscriptions 10c per inch. Address and Presentation \$1.00. Other rates on application.

Male Help Wanted

MALE HELP WANTED. DUE TO transfer and promotion of one of our men, a man over 40 preferred. Apply after 10 A.M. Friday morning, November 1st, at the Charlottetown Hotel. Ask for Mr. Paul Leger. L-966-10-31-21.

Salesmen Wanted

CALENDAR AND ADVERTISING Specialty salesman. Exclusive territory, highest commissions, good selling line. Apply Box 521, London, Ont. L-S. W. 10-29-01.

Miscellaneous

CAN FILL LARGE ORDERS IN grease. Clinton Morrison, Belt Dealer, Fredericton Station. L-968-10-31-31.

To Let

FO LET — HOUSE MCGILL Avenue. All modern conveniences. Reasonable rent. Phone 1206-J. L-967-10-31-31.

Lost

LOST — RED SPARE WHEEL AND Tire. Notify Knud Jorgensen, Fredericton. L-1000-11-1-11.

Agents Wanted

MEN OVER 40 FOR RAWLEIGH Route which just became available. Good opportunity for willing workers. Apply Rawleigh's, Dept. M-1-470-140-K, Montreal, Canada.

For Sale

APPLES AT S. F. REEVES', Southport. L-969-10-31-61.

FOR SALE — BATTERY RADIO, Victor, 194 Cumerland St. L-969-11-1-11.

FOR SALE — NEW BUNGALOW, All modern conveniences. Apply 10 Felling Street. L-243-9-16-01.

FOR SALE — SLIGHTLY USED Engine Oil, suitable for house or office, no dust or ashes. T. W. Bentley. L-981-11-1-11.

FOR SALE — PONY SEVEN years. 600 lbs. Broken and pony foal. Apply, Claude Smith, East Royalty. L-881-10-30-31.

FOR SALE — PURE BRED Oxford Down Ram Lambs, Government Graded; also Holstein Cow to freshen soon. Apply Walter McKenna, Bradabang. L-927-10-30-11.

PROPERTY FOR SALE—100 acre farm of late John William McLeod, Ulg. Apply to Shaw McMillan, Alberry Plains or McLeod & Bentley, Charlottetown. L-848-10-28-31.

Wanted

WANTED ELECTRIC REFRIGERATOR. State price and condition. Write ABC Guardian. L-948-10-30-31.

WANTED — TWO PASSENGERS to Montreal next week. Phone Box 464, Summerside. L-994-11-1-11.

GRAIN

WINNIPEG, Oct. 31—(CP)—Trading interest in the wheat pit at the Winnipeg grain exchange was at a low ebb today and prices closed 1-8 higher to unchanged. The October future went off the board at 70 5-8 cents a bushel, while December wheat was posted at 71 5-8 and May at 75 7-8.

Buenos Aires prices were 1 5-8-1 1-8 cents higher at noon.

MINING

Stocks	Close
Aldermac	15
Anglo Cdn	60
Aunor	197
Bankfield	9
Bidgood	15 1/2
Big Miss	4 3/4
Bralorne	10.00
Brouhan	83
Buff Ank	430
Cal Edm	430
Cal Edm	155
Calmont	24
Canal	56
Cdn Mal	210
Haribo	190
Cent Pat	9 1/2
Chester	133
Cochenour	78
Davies	15
Denison	3 1/2
Dome Oil	23
Duquesne	6 3/4
East Mal	320
East Crest	5
Eldorado	34
Falcon	265
Fed Kirk	4
Francoeur	38 1/2
Gillies Lake	4
Gods Lake	35
Golconda	16
Gold Gate	11
Goodfish	1
Gunnar Gold	38
Halnor	1
Harb Rock	106
Haribo	5
Hollinger	12 7/8
Home Oil	218
Howey	29
Hud Bay Min	27 1/4
Jack Wa	23 1/2
Kerr Add	315
Kirk Hud	20
Kirk Lake	96
Lakeshore	19 1/2
Lamague	490
Lays Cad	6
Leitch	53
Little L L	215
Macassa	345
MacLeod	248
Malsale	113
McKenzie	112
McWatters	28
Min Cpn	78
Moneta	59
Naylor	24
Noranda	58 3/4
Normal	36
Nor Star	90
Okalta	90
Omega	16
Palmita	7
Parman	125
Paymaster	4
Pick Crow	295
Plyer	220
Powell	110
Prairie Roy	9
Premier	85
Preston	280
Sant Ant	235
Sensler	38
Sheep Ck	90
Sigma	175
Siscoe	50
Sladen	49 1/2
Steep Rk	161
Straw Lake	4 3/4
Sturgeon	19
Sud Basin	130
Sullivan	60
Sylvanite	260
Tack Hugh	315
Township	12
Upper Cda	142

Notice to Truckmen

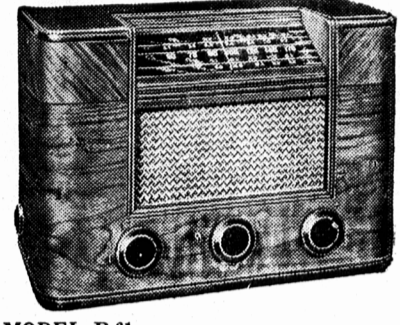
Truckmen are requested to furnish themselves with a truckmen's license not later than October 31st. After this date the names will be handed in to the City Court for collection.

J. A. FULLERTON,
City Clerk.
L-785-10-26-51.

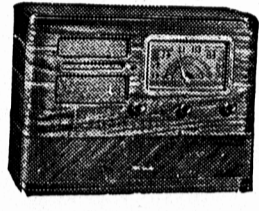


WITH **RCA Victor**
"HOLMAN'S BRING THE WORLD TO YOUR FIRESIDE"

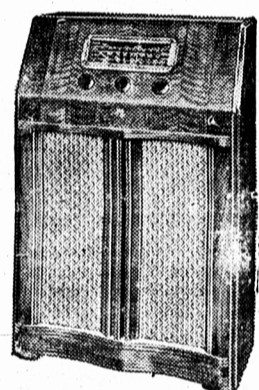
THE NEW 1941 RCA
VICTOR BATTERY SAVER
RADIO BRINGS A FINER
WORLD OF ENTERTAINMENT INTO YOUR HOME!
AND AT HOLMAN'S
YOU'LL FIND A MODEL TO
SUIT EVERY PURSE
AND TASTE!



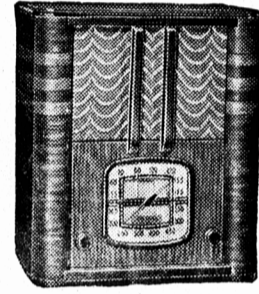
MODEL B-61
A smartly styled battery table set with new type Band Spread Overseas Dial, set at convenient angle for full vision tuning, makes short wave tuning easy, low drain tubes, plug-in connection for Record Player, beautiful walnut cabinet. \$69.85
Complete with batteries — — — \$69



MODEL B-60
Quickly convertible to an all-electric radio when electricity comes to your home. Simply replace batteries with a low cost power unit which plugs into your light socket. Tuning range 540 to 1720 kcs. Automatic control of volume, safety on-and-off indicator saves batteries. plug-in connection for Record Player. Low drain 1.4 volt — — — \$49.95
tubes. Complete — — — \$49



MODEL B-70
A new short and long wave Battery Console set with Band Spread Overseas Dial, short wave as easy to tune as local, improved continuous tone control, automatic volume control, uses 1-2 volt "A" battery and 1.4 volt tubes for low drain and economical operation, smartly styled cabinet of heart walnut veneers, 37-3/16 inches high. \$94.85
Complete with batteries — — — \$94



MODEL B-62
An outstanding value because of low battery drain, superb tone and quality, distance booster for increased sensitivity, exquisitely finished table style cabinet, new easy-to-read dial. \$34.95
Complete with batteries — — — \$34.95

EASY TERMS

See The NEW **RCA Victor** Battery Saver RADIOS At

HOLMAN'S 2 BIG STORES
SUMMERSIDE & CHARLOTTETOWN

Ventures 275
Vermilata 3 3-4
Walt Amu 370
Wendigo 28
Wrt Harg 625

UNLISTED
Foothills 58
Oakisko 4 7-8
Pend Ore 170
Temisk 4 7-8

TORONTO, Oct. 31—(CP)—Stocks registered a strong advance in today's Toronto exchange market and turnover of 349,000 shares was the heaviest in eight sessions.

Dominion Stores traded 600 shares and gained a fraction and the close was up narrowly for Fanny Farmer and Loblaw A and National Grocers pfd firming 1 1/2.

The strong spots in the steels included Canadian Car, Dominion Foundries, National Steel Car, Page-Hersey and United Steel and International Petroleum was a gainer in the oils.

Gains of a point or more were netted by Bathurst Power A, Bell Telephone, Canadian Celanese and Simpsons pfd.

Home Oil traded 15,000 shares and advanced 23 cents to 2.18. Okalta gained 10 cents to 90 and Anglo-Canadian, Calmont, Precita, Foothills and Davies improved a few

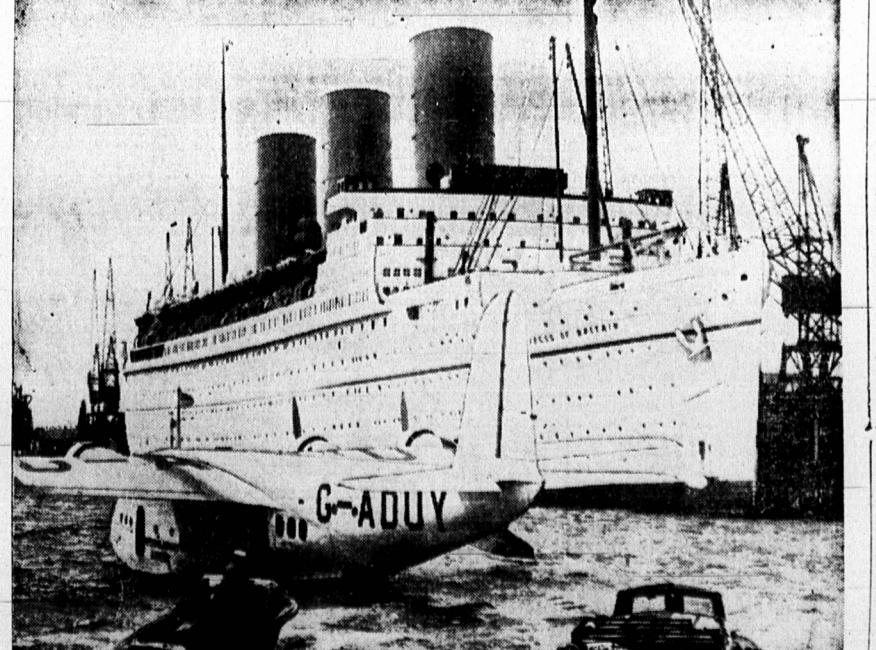
cents. Calgary and Edmonton advanced 5 cents.

A gain of 3-4 for Noranda was the main adjustment in the senior list. Pend Oreille and Walt-Amulet added 10 cents and Steep Rock, Sud-

bury Basin and Sherritt added 2 to 5 cents.

San Antonio advanced 15 cents to 2.35. Powell-Roux and Kerr-Addison gained 10 and gains of about 5 cents were netted by Aunor, Buf-

falo-Ankerite, Central Patricia, East Malartic, Macassa, McKenzie, Preston, Sylvanite and Teck. Hughes, Brouhan firming 2 3/4 to 63 on turnover of 20,000 shares and Upper Canada gained 3 cents to 1.42.



The Canadian Pacific liner, Empress of Britain, has been lost as the result of enemy action, the admiralty announced in London, stating she was attacked by enemy aircraft and set afire. Salvage operations began, but while the Empress was in low she blew up and sank. Of the 643 persons aboard, 598 had already been landed in Britain, on Oct. 28. "Resolute and efficient handling of the ship's aircraft defenses" contributed to the high proportion saved, the announcement said.

Professional Cards

- MORRELL & CO.**
D. F. ARCHIBALD
Chartered Accountants
Eastern Trust Building
Charlottetown
- McLEOD & BENTLEY**
W. E. BENTLEY, K.C.
J. A. BENTLEY, K.C.
C. F. BENTLEY, LL.B.
Barristers and Attorneys-at-Law
MONEY TO LOAN
280 Richmond Street
- M. ALBAN FARMER**
B.A., LL.B.
BARRISTER, SOLICITOR, ETC.
Canadian Bank of Commerce Bldg.
MONEY TO LOAN
- ALEX W. MATHESON**
BARRISTER, SOLICITOR, ETC.
Money to Loan Collections
Office: 30 Great George St.
- EYES EXAMINED**
and
GLASSES FITTED
J. S. TAYLOR
OPTOMETRIST
Office Hours 9-12 — 2-5.30
Evenings By Appointment
New Location
Cor. Kent and Queen Sts.
Opposite Rex's Grocery