

Drugs

WE HAVE BUT ONE GRADE—THE BEST

We look after them while they are in stock—they are reliable.

When they are to be compounded the work is done by a Registered Druggist.

When you pay for them you are always pleased with the price—it is invariably right.

JAMIESON'S Drug Store

Advertising Rates—Payable in Advance

Minimum Charge for Any Advertisement 25 Cents

Central Guardian local, 50 per word; Western and Eastern local 30 per word; Announcements and Coming Events 30 per word; Classified 30 per word; In Memoriam Notice 70 per inch; Lists of Firms and Special Offerings, Cards, etc. 50 per name; Letters of Condolence 70 per inch; Wedding engagements 40 words for \$1.00 and 10 cents for every additional 10 words. Notices of Thanks and Appreciation, 70 per inch or 40 per word. Lists of Subscriptions 40 cents per inch. Address and Presentation \$1.00. Other rates on application.

For Sale

FOR SALE — 1-38 FT. LOBSTER Boat with 6 Cylinder Dodge Engine. Lloyd Inman, Bordier, 7-12-41.

TRACTOR AND THREE FURROWED plough for sale reasonably. Edson Bayner, Clermont, 7-14-41.

FOR SALE — GENERAL PURPOSE horse. He's a dandy. Write G. Guardian, 7-11-41.

FOR SALE AT ROSE VALLEY, store, house and lot. Apply John McDonald, 7-11-41.

FOR SALE — CHEVROLET COUPE. Apply George Cahill, Kings-ton, 7-14-41.

CAR RADIOS FOR SALE. LOUIS MOSE, New Annan, 7-14-41. FOR PHOTOS see Enman's, 7-14-16-18-21-23.

Female Help Wanted

WANTED — COOK, GENERAL TO take position Pembroke, Ontario. 2 adults to cook for. Railway fare paid. References necessary. Phone 955 or apply in person to 83 Queen Street, 7-14-41.

TWO GIRLS WANTED FOR general housework. Apply Mrs. LaRose, 4 Prince Arthur Street, Amherst, Nova Scotia, 7-14-41.

War—25 Years Ago Today

(By The Canadian Press) JULY 14, 1917 — Dr. George Michell succeeded by Bethmann-Hollweg as German chancellor. King George V and Queen Mary returned to the armistice in 10-day Russian repulse Austrians west of Kalkoff and captured Novitska.

Keep Minard's in the home.

Professional Cards

McLEOD & BENTLEY
W. B. BENTLEY, K. C.
J. A. BENTLEY, K. C.
Barristers and Attorneys-at-Law
MONEY TO LOAN
154 Prince Street

Morrell and Company

D. F. ARCHIBALD
Chartered Accountants
Eastern Trust Building
Charlottetown

H. F. McPHEE B.A., K.C.

NOTARY &c.
BARRISTER SOLICITOR
Miley Building
Charlottetown

BELL & MATHIESON
MONEY TO LOAN
Pameron Block, Charlottetown
P. E. Island

PALMER & HASLAM
A. J. HARRIS, B.A., LL.B.
BARRISTER, ETC.
Bank of Nova Scotia Chambers
Charlottetown P. E. I.
MONEY TO LOAN
Phone 85 P. O. Box 13

MacGUGGAN & TRAINOR
MARK R. MacGUGGAN, K. C.
C. ST. CLAIR TRAINOR, K. C.
Barristers, Solicitors
MONEY TO LOAN
Office: Over Provincial Bank
Richmond Street, Charlottetown

EYES EXAMINED

AND
GLASSES FITTED
J. S. TAYLOR
OPTOMETRIST
New Location
Corner Kent and Queen Sts
Opposite St's Grocery
Evenings By Appointment
Phone Residence 1015

STOCK QUOTATIONS

MINING

(Canadian Press)
TORONTO, July 13—

MONTREAL STOCK EXCHANGE

Stocks	Close
Bell Tel	137
B.C. Power A	21 1/2
Bldg Prod	12 1/2
Can Cement	4 3/8
Can Car Pfd	25
Can Ind Al A	3 1/4
Can Pacific	5 1/2
Cons Smelt	35
Dist Seag	23 1/4
Dom Coal P	10 1/2
Dom Bridge	23 1/8
Dryden	4 1/4
Int Nickel	30
Massey Harris	3 3/8
Mtl Power	21 3/4
Nat Brew	25
Nat Steel Car	29 7/8
Noranda	42 3/4
Power Corp	4
Shawinigan	13
St. Law Com	115
St. Law Pfd	10 1/4
St of Can	60
St of Can P	68

New York Stock Exchange

Stocks	Close
Am C and P	25 3/4
Am Tel Tel	114 5/8
Anacosta	26 1/2
Baldwin Loco	11
Bendix AV	30 1/2
Beth Steel	85 3/4
Chas Ohio	31
Chrysler	63
Con Edison	13 1/4
Gen Elec	27 1/8
Gen Motors	39 1/8
U S Rubber	18 3/4
U S St Co	49 5/8
Vanadium Corp	16 3/8
West Union	29 7/8
West Elec	71 1/2
Woolworth	—

Montreal Curb

Stocks	Close
Abtibi Pfd	4 7/8
Asbestos	17 1/2
B & O	15 1/2
Beauharnois	9 5/8
Don A	30
Ford A	18 1/2
Hir Walker	41 1/2
Home Oil	210
Imp Oil	8 7/8
Int Pete	13
Price Com	7 1/2
Price Pfd	—

Finance

NEW YORK, July 13—(AP)—Leading stocks edged downward in today's market without being subjected to any real selling pressure. The Associated Press average of 60 stocks was off 2 of a point at 37. Transfers of 278,840 shares compared with 425,415 in the preceding full session. Canadian issues were weaker. Distillers Securities lost 1-8, Dominion 1-2 and McIntyre and Walker 3-4 each, while International Nickel gained 1-8 and Canadian Pacific, Brazilian Traction and Lake Shore were unchanged.

Among losers were U.S. Steel, Bethlehem, General Motors, American Telephone, Santa Fe, Great Northern, Standard Oil (N.J.), Sears Roebuck, United Aircraft, Sperry, Anacosta, Cerro De Pasco, Westinghouse, Consolidated Edison, Johns Manville and U.S. Gypsum. Chrysler ended up a shade. Along with Goodrich, Boeing, Deere, Philip Morris, Du Pont, Dow Chemical and International Nickel.

Toronto Exchange

TORONTO, July 13—(CP)—Stocks recovered part of their early losses in the final hour today. Turnover was below the week's average at 95,000 shares. The drift was downward from the opening and at the close Hollinger was down 20 to 7.55, Kerr Addison 10 to 3.91, Amcor 15 to 51. Base Metal sectors moved in light volume at losses of 1-4 to 1-2 for Noranda and Consolidated Steel. Industry's lost 21 in the index early on weakness in the utility, steel and paper groups. Biltz Amcor Oil was down 7-8 to 15 1-4. B.C. Power A, Fanny Ferner, Ford A, Imperial Oil and Walkers improved moderately on light demand.

Produce Prices

MONTREAL, July 13—(CP)—Canadian Commodity Exchange. Butter spot: Que (92 score) 33 7-8, traded, sales, 1,700 boxes at 33 7-8. Eggs spot: Eastern A-large 33 1-2-34; A-medium 31 1-2-32; A-pullets 28 1-2A; E-B 28 1-2-29; E-C 25 1-2-28. To arrive: butter, unquoted. Futures: butter, July 33 7-8-34, Aug. 34 3-1-8, Sept. 34 3-3-34 1-2, Nov. 25 2-5 1-8; eggs, July 32B. MONTREAL, July 13—(CP)—Produce prices here today as reported by the Dominion Department of Agriculture follow: Eggs: graded shipment selling A-large 34; A-medium 32 1-2; B 28 1-2-29; C 25 1-2. Butter: first grade creamery prints, jobbing price, 35 1-2-38; first grade solids, 1-lbbing pic, 35 1-2-38; current receipt Que no 1 pasteurized 33 5-8; no 2 32 5-8; wholesale, Que no 1 pasteurized 34 1-8; no 2 33 1-4-33 3-8. Cheese: current receipt, western and Que, white, 19 5-8 FOB Montreal, wholesale, western and Que, White 20 first grade FAS Montreal. Potatoes: 75 lb bags new Que 2.10-2.25; Ont 2.50.

Montreal Exchange

MONTREAL, July 13—(CP)—Trading direction was mostly downward today on the stock exchange and curb market. Losses ranged to more than 3 points but were generally fractional. Bell Telephone slipped 3 1-8 in utilities on the stock exchange and Power Corporation and B.C. Power "A" dropped less than amounts. Quebec Power posted a gain, C.P. R. did better in carries. In industrials Dominion Bridge, Canadian Cuy preferred fell back a little and Industrial Alchco "A" was a small gainer. Consolidated Smelters and Noranda dropped fractions in pivotal metals and International Petroleum gave ground in oils. Celanese preferred dipped 3-4 in miscellaneous issues appearing. Total sales: 12,100 shares; Industrials, 5,500; Mines, 6,500; Bonds \$1,000.

Currencies

NEW YORK, July 13—(CP)—The Canadian dollar and the pound Sterling closed unchanged in relation to the United States dollar in today's final foreign exchange dealings. Sterling was quoted at \$0.4 and the Dominion currency at a discount of 9 15-16 per cent. (Ottawa Foreign Exchange Control Board rate 9.09-9.91 per cent discount.)

Banks

Stocks	Close
Canada Commerce	143
Nova Scotia	220
Royal Bank	147
Montreal	—

Markets At A Glance

(Canadian Press) Toronto—Industrial and mining stocks slightly lower; junior oils steady. Montreal—Utilities, papers and golds lower; other industrials unchanged. New York—Stocks closed lower. Winnipeg—Wheat unchanged.

Stocks

Stocks	Close
Aldermas	8 1/2
Aunor	100
Bobjo	10 1/2
Bonetal	15 1/4
B A Oil	12
Erik Dom	41
Broulan	95
Cal Edm	85 1/2
Cent Pat	68
Chenier	35
Cons Smelt	130
East Malartic	43 1/4
Eldorado	245
Falcon	20
Frankour	2 1/2
Gold Eagle	1 3/4
Gold Gate	7 1/2
Gunnar	755
Hollinger	210
Home Oil	2 1/4
Homes	23 1/2
Hud Bay	9
Imp Oil	30
Int Nickel	13
Int Pete	390
Kerr Add	43
Kirk Lake	850
Lake Shore	5
Lapa Lad	52
Lelich	2 1/2
Loblaw	120
MacLeod	149
Malartic	56 1/2
McKenzie	23 1/2
Moneta	10
Naybob	42 3/4
Noranda	67
Normetal	55
Obrien	25
Okalta	15
Ont Nickel	2 3/4
Pacalta	17
Paymaster	90
Perron	165
Pick Crow	133
Pioneer	4 1/8
Powell	45
Premier	165
Preslon	18
Quemont	2
Roche	17
Royalty	157
San Ant	18
Senator	30
Siscoe	107
Slave Lake	1
Steep Rock	125
Straw Lake	140
Sud Basin	150
Sylvanite	50
Teck Hu	75
Toburn	70
Upp Cda	400
Ventura	10 1/2
Vermilata	209
Virg Harg	—

UNLISTED

Foothills	75
Oil Sele	2 1/4
Total sales	95,000.

Livestock

MONTREAL, July 13—(CP)—Calf and hog prices were steady to 25 cents higher on the Montreal livestock market today. But cattle and lamb prices were slightly lower. Cattle receipts were 609, calves 1,599, sheep 976, and hogs 294. The few early sales of cattle were at \$10.75 for medium to medium good steers, and up to \$10.75 for medium, Good heifers sold from \$9.50 to \$10.50 and medium from \$8.50 to \$9.50. Good cows were \$8.25 to \$8.50 with one top cow at \$9, medium sold from \$7.50 to \$8.25 and common butchers from \$6.50 to \$7.25. Bulls ranged from \$7 to \$9.50. Calves were strong to 25 cents or more higher than last Monday. Good quality veals made \$13 to \$13.50, medium kinds \$11.25 to \$13 and common light veals down to \$10. Drinkers were \$8 to \$9.50 and drivers and light grassers in mixed lots were \$7.50 to \$9 mostly \$8 to \$8.50. Yearlings \$6 to \$7. Lambs were lower. An odd sale of lambs was made at \$14 for good kinds with culls out at \$12. One small lot of 34 lambs was sold to a local butcher at \$15.50 flat. Sheep were firm \$5 to \$8. Hogs were 25 cents higher selling at \$16.25 for B-1 dressed. Grade A drew \$1 per hog per unit with discounts on old grades. Sows were \$10 to \$11 live weight.



OLD HOME WEEK

AND
PROVINCIAL LIVE STOCK EXHIBITION
CHARLOTTETOWN

AUGUST 11, 12, 13, 14, 1942

THE MARITIMES GREATEST HOLIDAY

UPWARDS OF \$10,000.00 IN PRIZES, PREMIUMS, PURSES and AWARDS
AN OUTSTANDING ENTERTAINMENT PROGRAM
9 VAUDEVILLE ACTS including 2 of the WORLD'S GREATEST THRILLERS
GRAND GALA REVUE with Beautiful GLAMOROUS GIRLS, SINGING COMEDIANS and BEAUTIFUL LADY SINGER.
INTERNATIONAL STAR DANCING TEAM
REVUE FEATURED WITH GORGEOUS COSTUMES, ATTRACTIVE SETTINGS AND MODERN LIGHTING EFFECTS
BIG UP TO DATE MIDWAY WITH NEW ATTRACTIONS including LATEST MECHANICAL RIDES on MAIN FAIR GROUNDS
OVER 100 of the Best Horses in the Maritimes battling for honors on 4 afternoons with VAUDEVILLE ACTS interspersed.
Attractive Evening Shows with Vaudeville, SINGING, GRAND GALA REVUE with Magnificent Lighting, Effects, FIREWORKS, ETC.

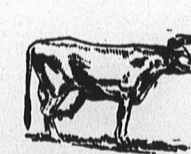
Provincial Live Stock Exhibition

Featuring PRINCE EDWARD ISLAND'S finest

HORSES
ROADSTERS
CLYDESDALES
PERCHERONS and
DRAFT



CATTLE
DAIRY BREEDS
AYRSHIRES
HOLSHTEINS
GUERNSEYS
JERSEYS



BEEF BREEDS
SHORTHORNS and
Other Beef Breeds.



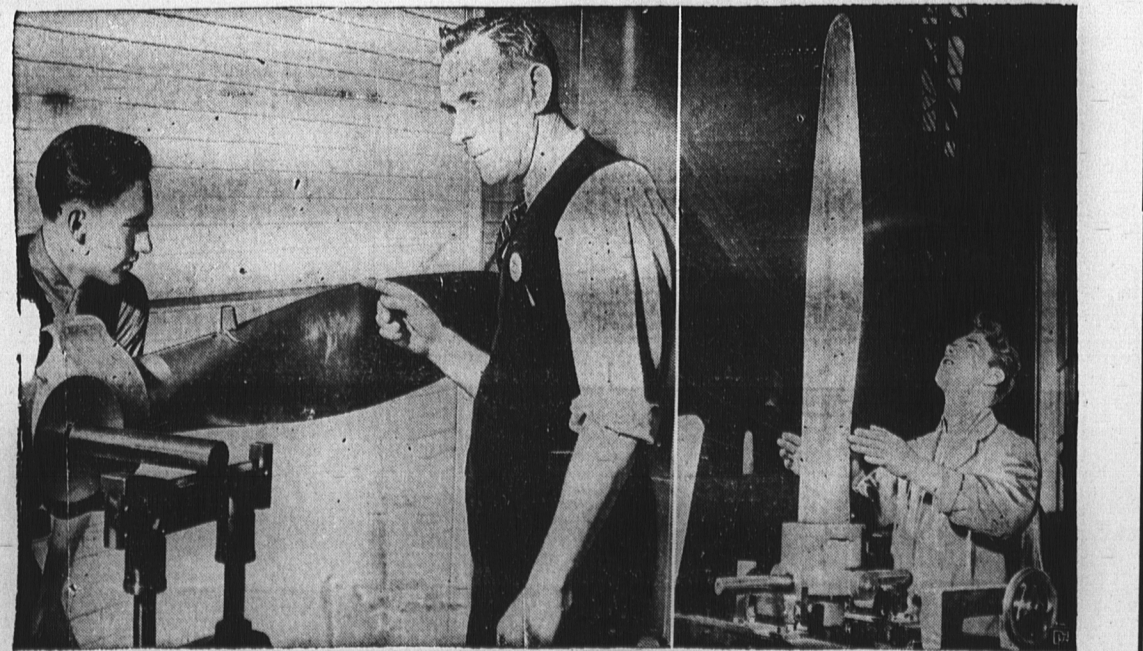
SWINE
YORKSHIRES.



SHEEP
OXFORDS
SHROPSHIRE
SOUTH DOWNS
HAMPSHIRE



POULTRY
PRODUCTION CLASSES
TURKEYS GEESE.
Plan this for your Holiday Week. Write your friends. Com
Provincial Exhibition Association
Charlottetown, PRINCE EDWARD ISLAND
J. W. BOULTER, Secretary.



Since the start of this war Canadian industry has tackled and solved many problems of production and, as a result, many items never before manufactured in Canada are now being turned out in large quantities. One of these is the constant speed propeller, which is a mechanical work of art requiring rigid balance tests in all stages of its manufacture. In the photo at right a technician checks the balance of a blade in upright position, while, at left, a completed metal airscrew undergoes its final inspection. Small cork and lead weights are used for the final test. If perfect balance has been achieved their weight is sufficient to start the propeller in rotation. A new plant, built and fully equipped in less than one year, is now producing metal propellers by the hundreds.