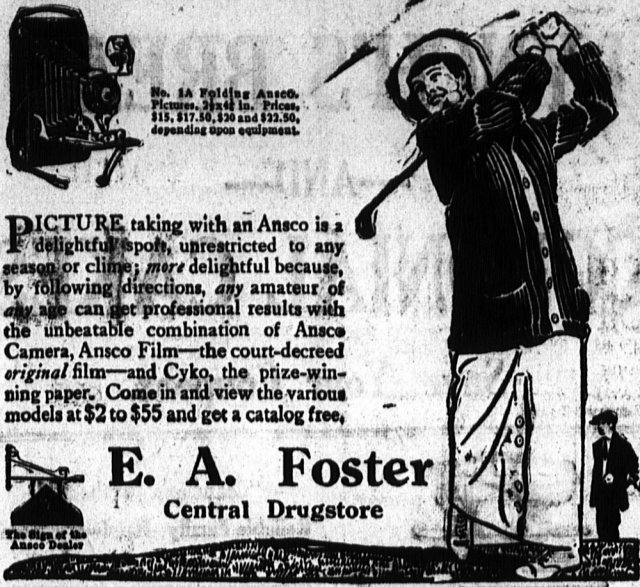


# ANSCO CAMERAS & FILM



PICTURE taking with an Anso is a delightful sport, unrestricted to any season or climate, more delightful because, by following directions, any amateur of any age can get professional results with the unbeatable combination of Anso Camera, Anso Film—the court-decreed original film—and Cyko, the prize-winning paper. Come in and view the various models at \$2 to \$55 and get a catalog free.

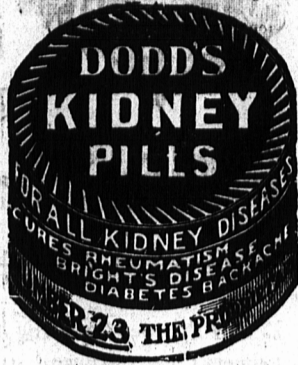
**E. A. Foster**  
Central Drugstore

## CENTENNIAL OF P.E. ISLAND'S FIRST SUNDAY SCHOOL

(Continued from page two.)

Rev. J. B. Strong returned to Charlottetown, for a second pastorate. It had an enrollment of 138 and an average attendance of 92. The school continued in the chapel for about thirteen years holding two sessions each Sunday until the building was enlarged and a school room provided. This was done in 1847 and an annex, fronting on Richmond Street, was added to the building where the Sunday School and the social services of the Society were held. The Superintendents this period were—John S. Bremner, George Moore, George Beer and John T. Thomas. With an enlarged place of worship and a Sunday School room, the school began to grow and five years later a second school was opened on Grafton Street west near the corner of Pownall Street. These schools were continued in Charlottetown under the name of the Prince Street Sunday School and the Grafton Street School for twelve years until the opening of the present brick church in 1864 when both schools were again united. At this time the enrollment of the Prince Street School was 298 and the average attendance 204, and the Grafton Street School had an enrollment of 137 with an average attendance of 90, making a total enrollment of 435 children in the Sunday Schools in connection with this Church.

ment with its improved equipment and seating was amply sufficient to accommodate the thirty-six classes that met each Sabbath within its spacious walls. There were also large rooms for the men's Bible classes taught by Mr. William Heard and Mr. James Hodgson, the Women's class taught by Mr. James Moore and the juvenile class taught by Miss Julia Duchemin. This school had in 1865 (the first year in the new room) an enrollment of 362 scholars, 330 members of the Bible Classes and 46 officers and teachers—a total school of 438. Messrs W. E. Dawson and Bert Moore were the first Superintendents in the new room. The school continued its sessions in the basement for forty-seven years until the



### ADVANCE IN RAW MATERIAL

To give the public some idea of the advance in price on raw materials the following is taken from The Canadian Music Trades Journal, re the advance in price in material used in the construction of Pianos:

MATERIALS.	INCREASE PER CENT
Copper	175
Spelter	450
Brass Tubing	180
Soft Steel	93
Sheet Copper	116
Roll or Commercial bronze	133-13
Clear Spruce	30
Walnut, Oak, Mahogany	75
Other Hardwoods	100
Chemicals	40 to 600
Tuning Pins	125
Music Wire	100
Hinges of all kinds	100
Brackets, bolts etc	100
Tracker Bars, each	120
Brass Hinges	400
High Speed Drills	100
Wrapping Paper and Boxes	100
Making an average advance of 172 per cent, since August, 1914.	

opening of the Heartz Memorial Hall in 1911.

Much might be said of the Sunday School operations in connection with the Methodism of Charlottetown during the period of its occupation of the basement and of its removal four years ago to this beautiful Hall with its grand appointments and improved facilities for carrying on the work of this noble institution whose organization we celebrate today. But time does not permit.

The century that has just closed upon this Sunday School records the faithful work of hundreds of earnest teachers who have gone to their reward, but "live again" in lives made by their presence. Thousands of scholars too, have passed out from the different classes, through these years to illustrate the principles and emulate the example of the Great Master whom they were here taught to love and serve.

"Our father's God, from out whose hand The centuries fall like grains of sand, We meet today, united, free, And loyal to our land and Thee, To thank Thee for the era done, And trust Thee for the opening one."

Oh make Thou us, through centuries In peace secure, in justice strong; Around our gift of freedom draw, The safeguards of Thy righteous law; And, cast in some diviner mould, Let the new cycle shame the old."

## DEATH LIST IN WESTERN TORNADO NEARLY HUNDRED

KANSAS CITY, June 6—Eighty-three lives were lost, hundreds of persons were injured and enormous property damage was done through a

large section of Arkansas and in Missouri, Illinois, and Mississippi last night by tornadoes, according to incomplete reports received today, with parts of the storm belt, especially in Arkansas, still to be heard from.

Incomplete tabulations show the following casualties: Arkansas, 57 dead; Mississippi, 11 dead; Illinois, 1 dead; Missouri, 11 dead.

You will like its Fine Granulation

Buy your sugar in these neat 2- or 5-lb. cartons, which you can place directly on your pantry shelves. Just cut off the corner and pour out the sugar as you need it.

### Lantic Sugar

comes also in 10 and 20-lb bags for housewives who like to buy in larger quantities "The All-Purpose Sugar"



2 and 5-lb Cartons  
10 and 20-lb Bags

The most stylish foundation for the up-to-date costume is a D & A or a La Diva corset.

Save money and improve your appearance by selecting a D & A or a La Diva, which are made in Canada by highly-skilled operatives, in one of the finest corset factories in the world. Every corset is guaranteed. At best dealers, everywhere.



### CANADIAN GOVERNMENT RAILWAYS

Commencing, Tuesday, June 13th, westbound.  
Sun day, June 11th, eastbound.

## 4 NATIONALS 4

NEW trains via NEW route through NEW country, making NEW links between the Atlantic and the Pacific Connection from Halifax, Sydney, St. John, with

QUEBEC—COCHRANE—WINNIPEG.

Quickest Time Shortest Route

"WESTERN-NATIONAL" "NATIONAL-ATLANTIC"

(Observation Sleeping Cars)

Dp. Quebec 2.00 p. m. Tue., Thur., Sat Dp. Winnipeg 5.15 p. m. Sun., Tue., Thu.

Ar. Cochrane 4.10 p. m. Wed., Fri., Sun. Dp. Cochrane 7.15 p. m. Mon., Wed., Fri.

Ar. Winnipeg 4.30 p. m., Thu., Sat., Mon. Ar. Quebec 9.10 p. m. Tue., Thu., Sat.

TORONTO WINNIPEG.

The "NATIONAL" west-bound The "NATIONAL" east-bound

(Through Sleeping Cars)

Dp. Toronto 10.45 p. m. Tue., Thu., Sat. Dp. Winnipeg 5.15 p. m. Sun., Tue., Thu.

Ar. Winnipeg 4.30 p. m., Thu., Sat., Mon., Ar. Toronto 12.05 p. m. Tue., Thu., Sat.

WESTERN CANADA, PACIFIC COAST, YUKON, ALASKA.

For further particulars apply nearest Canadian Government Rys. Ticket Agent.

### CANADIAN GOVERNMENT RAILWAYS PRINCE EDWARD ISLAND

TIME TABLE IN EFFECT MAY 8th, 1916.

Trains outward—Read down				Trains inward—Read up				
P.M.	Noon	A.M.	Dept.	Charlottetown	Arr.	P.M.	P.M.	A.M.
3.45	11.50	7.35	Dept.	Charlottetown	Arr.	11.40	10.15	10.20
5.00	1.15	8.30	Dept.	Munter River	Arr.	10.36	9.20	9.03
5.45	2.06	9.02	Dept.	Emerald Jct.	Arr.	9.59	8.48	6.15
6.22	2.49	9.27	Dept.	Kensington	Arr.	9.27	8.23	5.30
7.00	3.30	9.50	Dept.	Summerside	Arr.	9.00	8.00	4.50
8.10	12.15	Dept.	Summerside	Arr.	8.45	5.05		
9.08	1.57	Dept.	Port Hill	Arr.	7.48	3.31		
9.57	3.32	Dept.	O'Leary	Arr.	7.03	2.07		
10.38	4.40	Dept.	Alberton	Arr.	6.19	12.65		
11.15	5.40	Dept.	Tignish	Arr.	5.45	12.00		
Tues & Sat. Tues. Mon Wed. & Thurs. & Sat. Friday				Tues. Sat. P.M.				
8.55	8.55	6.30	Dept.	Emerald Jct.	Arr.	8.35	7.50	
9.30	9.50	7.35	Dept.	Cape Peaverve	Arr.	8.00	7.00	
P.M. A.M.				P.M. A.M.				
9.00	6.50	Dept.	Charlottetown	Arr.	9.45	5.50		
9.10	8.40	Dept.	Mt. Stewart	Arr.	8.35	4.10		
9.36	9.17	Dept.	Morell	Arr.	8.07	3.24		
9.57	9.47	Dept.	St. Peters	Arr.	7.44	2.50		
6.09	11.15	Dept.	Souris	Arr.	6.40	1.25		
7.10		Dept.	Elmira	Arr.	5.30			
A.M. Dept.				A.M. Dept.				
4.15	8.50	Dept.	Mt. Stewart	Arr.	8.35	3.50		
5.04	10.00	Dept.	Cardigan	Arr.	7.40	2.39		
5.25	10.30	Dept.	Montague	Arr.	7.16	2.10		
6.00	11.10	Dept.	Georgetown	Arr.	6.40	1.30		
Sat. only				Daily Sat. ex Sat. only & Sun.				
P.M. A.M.				P.M. A.M.				
3.10	3.10	Dept.	Charlottetown	Arr.	10.10	9.45		
4.25	4.55	Dept.	Vernon River	Arr.	9.27	8.31		
5.55	7.05	Dept.	Murray Harbor	Arr.	6.30	7.00		

## Bringing Up Father

