

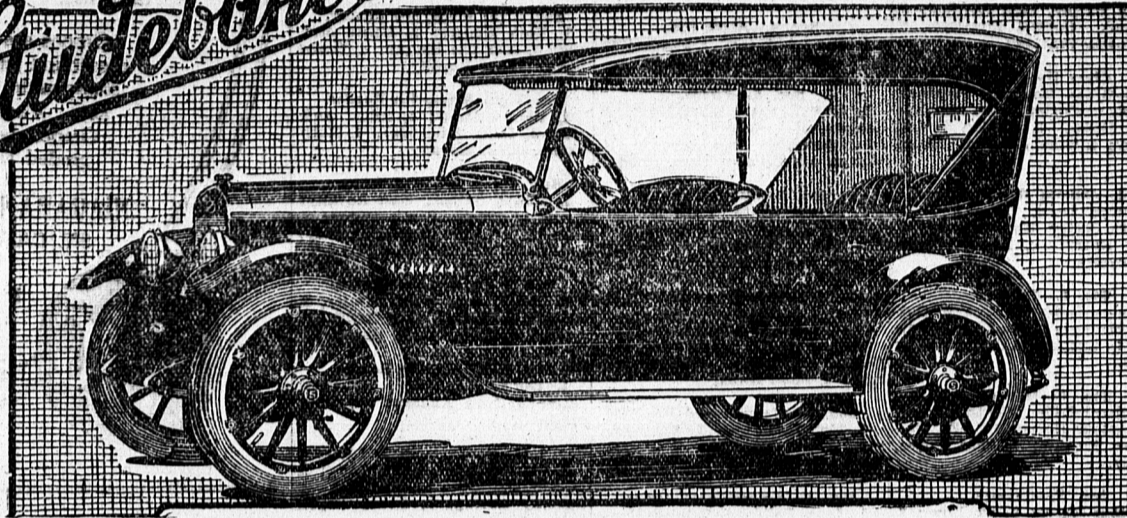
THE STUDEBAKER

The Highway Aristocrat---World's Greatest Light Weight Automobile

The Light-Six is manufactured by a 70-year old concern—the world's largest six-cylinder cars

This is the Car The Guardian has selected as First Grand Prize in the Great Campaign.

"Built-in-Canada"
Studebaker



Someone must win this beautiful \$1595 Studebaker. It is now on display at A. Horne and Co., Show Rooms, Charlottetown.

The Light-Six averaged 26.5 miles to the gallon of fuel in fourteen world-wide tests.

THE STUDEBAKER LIGHT-SIX

SPECIFICATIONS OF TOURING CAR

SEATING CAPACITY—Five passengers.

WHEELBASE—112 inches.

WEIGHT—2,550 pounds.

MOTOR—Six cylinder, 3 1/4"x4 1/2", cast en bloc, with upper half of crank case integral; aluminum detachable head; 40 horsepower; three-point suspension; valves set at an angle of 20 degrees silently operated by bell-crank construction; three timing gears driven by silent chain, with convenient outside adjustment; "10" connecting rods; 4 bearing crankshaft; connecting rods and crank shaft machined on all surfaces.

LUBRICATION—Splash and positive distribution.

COOLING SYSTEM—Centrifugal pump circulating system, with thermostatic control; tubular radiator; four-blade fan.

GASOLINE SYSTEM—Vacuum feed with 12-gallon tank in rear, hung from a protecting shield.

CARBURETION—Improved horizontal feed carburetor, mounted at top of motor, with warm air connection from exhaust manifold; horizontal and short intake manifold cast in detachable head with internal hot spots.

ELECTRIC SYSTEM—Double unit generator and starter; Bendix drive.

IGNITION—Battery; semi-automatic spark control.

ELECTRIC LIGHTS—Large headlights with improved deflecting lenses; speedometer light; tail light.

CLUTCH—Single disc, dry plate type.

TRANSMISSION—Amidship separate unit mounted on sub-frame; three speeds forward and reverse. Thief-proof transmission lock.

GEAR RATIO—4.55 to 1.

PROPULSION—Tubular propeller shaft with two flexible disc, universal joints.

REAR AXLE—Improved semi-floating; spiral bevel gear drive; full taper roller bearing equipment.

DRIVE—Hotchkiss.

SPRINGS—Front and rear semi-elliptic; front 35x2 inches, 7 leaves; rear 50x2 inches, 7 leaves, underslung.

TIRES—Cord, 32x4 inches, non-skid on rear.

BRAKES—Foot brake, external contracting, 14 1-16 x 2 inches; emergency brake, internal expanding 13 3/4 x 1 3/4 inches.

LOCKS—Built-in, thief-proof transmission and ignition lock.

FENDERS—Heavy pressed steel, oval-crown design.

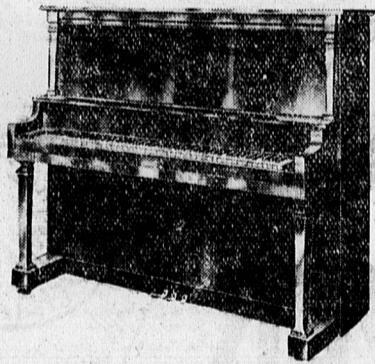
UPHOLSTERY—Genuine leather, French plaited.

TOURING CAR TOP—One-man Gypsy type, large bevel plate glass window in rear; curtains open with doors.

EQUIPMENT—Rain vision slanting windshield; electric horn; cowl lights; electrically lighted walnut-finished instrument board, on which are mounted carburetor choke, light and ignition switch, oil indicator, speedometer driven from propeller shaft, ammeter, fuse box, ventilator in cowl; combination robe and hand rail across back of front seat; outside and inside door handles; carpet-covered foot rest in tonneau; gasoline gauge on tank in rear, complete set of tools; tire carrier in rear with extra rim.

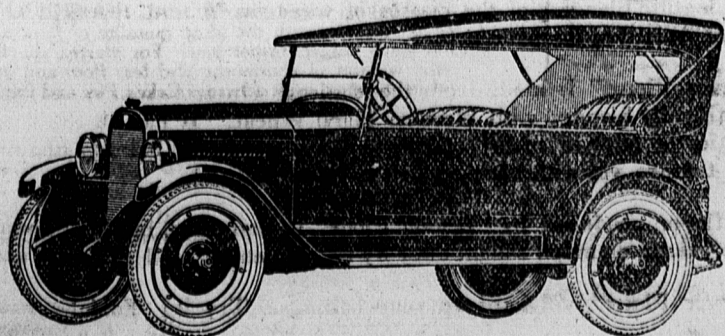
Have you voted for your favorite candidate to win this great Studebaker. Don't delay. Your subscription earns the maximum in votes right now.

ENNIS & CO., UPRIGHT GRAND PIANO



Now on Display at Miller Bros., Music Store. A splendid Prize for someone

THE GOOD MAXWELL



Beautiful \$1385 Maxwell Touring is Second Grand Prize. See it at Colin Stewart's, Summerside.

THE FREE PRIZES AND HOW THEY WILL BE AWARDED

FIRST GRAND PRIZE.—A five passenger STUDEBAKER "Light Six" touring car, valued at \$1595.00, and purchased from A. Horne & Co., Charlottetown. This splendid car is now on display. Call in and see it.—Then, win it.

SECOND GRAND PRIZE.—A five-passenger MAXWELL touring car, valued at \$1385.00. Purchased from Colin Stewart, Maxwell dealer, Summerside. Call and see it today. Mr. Stewart will be glad to show you this beautiful car.

THIRD PRIZE.—A beautiful Ennis & Co. \$400 upright Grand Piano, purchased from Miller Bros.' Music Store, Great George St., Charlottetown.

FOURTH PRIZE.—A magnificent \$150 Chesterfield, purchased from Holman's, Ltd., Summerside. A wonderful prize. Call and see it.

FIFTH PRIZE.—RADIO RECEIVING SET. The winner of this prize will be fortunate indeed. Purchased from Rogers Hardware Co., Charlottetown.

SIXTH PRIZE.—\$100 worth of merchandise from Prowse Bros., Ltd., Charlottetown. A splendid reward for some one.

SEVENTH PRIZE.—\$60 Classic Kitchen Cabinet. Purchased from Holman's Ltd., Summerside.

EIGHTH PRIZE.—\$48 Sewing Machine. Purchased from Miller Bros., Great George St., Charlottetown.

TEN PER CENT CASH COMMISSION Prizes will be awarded to all candidates who continue actively in the contest and fail to win one of the regular prizes. EVERY ACTIVE CANDIDATE IN THE GUARDIAN COMPETITION WILL BE A WINNER. YOU CANNOT AFFORD TO LET THIS WONDERFUL OPPORTUNITY PASS YOU BY. BE A WINNER. ENROLL YOUR NAME AT ONCE FOR ONE OF THE BIG PRIZES.

NOTE.—If the first Grand Prize is won by a candidate, living in district Number One, the second Grand Prize, which is a Maxwell Touring Car, will be awarded to the candidate having the highest total of votes in District Number Two, or vice versa, and the balance of the prizes will be awarded to the candidates having the next highest total of votes.

DISTRICT NUMBER ONE COMPRISES THE CITY OF CHARLOTTETOWN AND THE TOWN OF SUMMERSIDE.

SEE THIS AT HOLMAN'S LTD., SUMMERSIDE



\$60.00 Kitchen Cabinet is the seventh prize—A prize worth real effort. Boost for your candidate

MR. READER:—

If you promised to help a candidate win one of the big prizes, "make good" on your promise now. Clip out the coupon below, fill it in and send it direct to the Guardian or to your candidate. The most votes are given now. Get your subscription in by next Saturday night.

HELP YOUR FAVORITE WIN THE STUDEBAKER

Campaign Dept. _____ Date _____

The Guardian

Find enclosed \$..... in payment of my subscription to The Guardian for one year. Credit votes in the great contest to

(Name of your favorite candidate)

Is subscription new or renewal?

Signed

(Name of Subscriber)

Address

A renewal or old subscription for one year earns 15000 votes.

A new subscription earns 25000 votes if paid before Sept. 30th.

DO IT NOW. HELP YOUR CANDIDATE

LESS VOTES AFTER SATURDAY