

THE CENTRAL GUARDIAN

IT PAYS to buy in this Province.

SEE THE SPECIALS at Holman's Sample Rooms Wednesday and Thursday of this week. 6073-6-3ME11.

MEETING G. W. V. A. Thursday evening, June 5th at 8 o'clock. 6056-6-2M4L.

REAL HOLMAN'S AD in this issue regarding their Wednesday and Thursday specials. 6073-6-3ME11.

POST OFFICE HOLIDAY—This being a public holiday the delivery wickets in the Post Office will be open only between 7 and 8 p. m.

CAR FOR HIRE—First class Overland car for hire. Paddy McQuaid, stand McLehlan Bros. Phone 250. House phone 411-J.

COME HERE FOR KODAKS.—Brownie Cameras, Films, and all photographic supplies. We will be pleased to show you our assortment. Johnson & Johnson. 6048-5-31M3I.

CORRECTION RE NEW ANNA RACES AUG. 20.—In referring to the entries published a few days ago the entrance fee should have read "Five per cent to entrants. No deduction from money winners."

WOOL WILL BE RECEIVED at the Grading Stations at Charlottetown and Summerside between June 23rd and July 1st. Twice for tying fleeces and full information in regard to above may be secured by applying to Secretary Sheep Breeders' Association, Charlottetown. 6053-6-2Mmonwed1.

PROMOTED.—Lieutenant A. Wyllie Allan, M. C., son of Lieut. Colonel J. R. Allan, Covehead, officer commanding 82nd Regiment, who went overseas with A Company, 105th Battalion has been promoted to the rank of Captain. Captain Allan transferred from the 105th Battalion while at Shorncliffe in 1916 to a Machine Gun unit and went to France in 1917. It is expected that he will return home about the middle of this month.

NURSING SISTER RETURNS.—Miss Edna Chappelle, daughter of Mrs. T. L. Chappelle, Prince Street, arrived home Friday night after serving as a nurse for over a year with unit No. 45 of Richmond, Virginia, in France. Miss Chappelle's unit was situated in front of the base, a few miles behind the lines. She expects to spend the summer here. Her many friends will be delighted to see her home again and enjoying the best of health, after her arduous experiences.

IMPORTANT.—For the guidance of motorists it may be stated that the restrictions with respect to closed roads on certain days of the week and the Sunday regulation hours remain the same as last year and will be strictly enforced. Excepting in the City and Towns which have adopted the Daylight Saving time the old time is still in force in all parts of the Province. Car owners are again reminded that no Motor Vehicle will be permitted to be operated without being equipped with non-glare lenses and markers for the current year. 6088-5-29M1wk.

JUST ARRIVED—shipment of Nitrate of Soda, which we are selling at lowest prices. Order early as we have only a limited quantity for sale. A. Home & Co. 6075-6-3Mts.EFri11.

IF YOU WANT Sodas with the right flavor, come to us. Johnson & Johnson, Druggists. 6048-5-31M3I.

NOW IS THE TIME for sheep dip. We handle Terro's, the best on the market. Carvell Bros. 6040-5-31M2.

LEAVE YOUR ORDER at Holman's Sample Rooms for the Wednesday and Thursday special. 6073-6-3ME11.

JUST ARRIVED two cars of lime and two cars of slag. Lowest prices from cars. P. J. Noy & Co., Hunter River. 6056-6-2M3L.

WE HAVE JUST RECEIVED a nice line of sample pipes, which are selling cheap. If you are in need of a good pipe, we can save you money. Johnson & Johnson, Druggists. 6048-5-31M3I.

SECOND HAND CARS.—We have one Ford five-passenger well equipped—good order. One Heavy six-cylinder McLaughlin, good cars at a right price. See them. J. Stanley Wedlock.

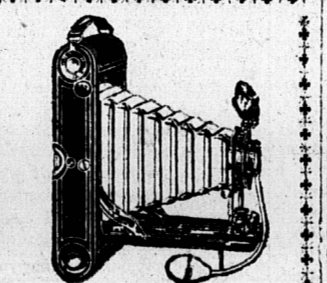
WHITE ROSE GASOLINE.—Autoists and others who prefer "White Rose" can procure it either wholesale or retail at Poiré & Thompson's Ltd., Montague. 6076-6-2Mtt.

FIREWOOD.—For the open fire place in suitable lengths, good and dry, just the thing for these cool evenings. Also soft wood for kindling, delivered promptly at the lowest prices. A. Pickard & Co. Phone 240.

ROCKY POINT FERRY.—A change went into effect on the Rocky Point service yesterday. There is now an earlier boat in the morning leaving Charlottetown at 7.30 and Rocky Point at 8.00 and a later boat in the evening leaving Charlottetown at 6.30 and Rocky Point at 7.00.

EXPERIENCES AMONG THE ESKIMOS.—Inspector C. D. LaNauze, of the Royal North West Mounted Police will give an account of life among the Eskimo in the Arctic Circle in St. Pauls Parish Hall Thursday, 5th, 8 p. m. The Inspector has travelled extensively among those people while on police duty and has many interesting stories about them.

Minard's Liniment Co., Ltd. Gents.—I have used your Minard's Liniment in my family and also in my stables for years and consider it the best medicine obtainable. Yours truly, ALFRED ROCHAV, Proprietor Roxton Pond Hotel and Livery Stables.



Nature has much in store for us—especially at this season. You can make happiness a habit by spending your spare hours out-of-doors, and studying nature with an AUTOGRAPHIC KODAK OR CAMERA with this camera you can catch the charms of the woods, fields and streams and preserve them for future information and inspiration.

You will find the purchase of such a camera the best investment you ever made.

It will yield enjoyment now and for years to come.

If you wish the pleasure of taking pictures without the work attached, then let us do the developing and printing. WE GUARANTEE PERFECT SATISFACTION. Our line of Photo Supplies is very complete.

COME IN AND HAVE A CAMERA TALK.

JOHNSON & JOHNSON The Quality Druggists Corner Kent and Prince Streets

PICKARD & Co

HAVE VESSELS WITH Sydney Screened Coal

Discharging every day this week

Orders will be filled promptly

HARD COAL.—Chestnut size, for Baseburner, at A. PICKARD & Co's.

KINDLING WOOD—Clean and dry. RING 240.

HARD WOOD—For the fireplace at PICKARD & Co's

Womens Mahogany High Cut Bal NEOLIN SOLE 120 Pairs—ALL SIZES. This is the latest style and color and has a nice medium sport rubber heel. \$4.95. Womens Black Kid High Cut Bal Sport Heel—Leather Sole 100 Pairs all sizes. Either above boots have toe caps and if you are not satisfied you can get your money back. POSTAGE FREE MORRIS-SMITH-BEER

EVERYBODY'S DOING IT CHEW HICKEY'S BLACK TWIST Hickey & Johnson Tobacco Co Ltd.

The Imperial Fox Biscuit A balanced ration for foxes supplying every thing needed for nourishment and growth of the animals. Fox feeders can largely reduce their meat bill by liberal feeding of these TRIED—AND—PROVED FOX BISCUITS. We can fill ton orders at reasonable cost. ROSS & MACMILLAN Manufacturers, Charlottetown.

S. S. Service Between Pictou N.S. and Eastern Ports of P.E.I. for Season of 1919 Via S. S. Harland MONDAY—Leaves Montague, P.E.I. 7 a. m. Lower Montagu 7.45 a. m. Georgetown 8.15 a. m. Murray River 11 a. m. Murray Harbor North 12 o'clock arriving at Pictou, N. S. about 4 p. m. WEDNESDAY and Saturday—Leaves Pictou on arrival of noon train from Halifax calling at Beach Pt., Georgetown, arriving at Montague 5.30 p. m. THURSDAY—Leaves Montague at 8 a. m. calling at intermediate ports on way to Cardigan returning to Georgetown same evening and remaining over night. FRIDAY—Leaves Georgetown at 6.30 a. m. Murray Harbor South 8.30 a. m. arriving at Pictou 1 p. m. Run by Daylight Saving Time. For further particulars write, wire, or phone to WILLIAM MCLURE, Pictou, N. S.

EASTERN STEAMSHIP LINES, INC. INTERNATIONAL LINE—RESUMPTION OF FREIGHT AND PASSENGER SERVICE ST. JOHN AND BOSTON Steamship "CALVIN AUSTIN" will leave St. John every WEDNESDAY at 9 a. m., and every SATURDAY at 6 p. m. (Atlantic time.) The Wednesday trips are via Eastport and Lubec, due Boston 10 a. m. Thursdays. The Saturday trips are direct to Boston, due there Sundays, 1 p. m. FARE \$8.00. STATEROOMS \$2.00 up. Direct connection with Metropolitan steamers for New York via Cape Cod Canal. Freight rates and full information apply to A. C. CURRIE, Agent, St. John, N. B. 6122-5-7metf.

Acadia Coal Co. ALBION and ALLAN SHAFT MINES SCREENED LUMP. SCREENED NUT RUN MINE. Increased labor facilities afford prompt delivery and quality more free from slate. Albion Run Mine for Furnace. Albion Nut for Kitchen. CARVELL BROS SELLING AGENTS



See our display of fishing gear—Everything that the fisherman requires and all moderately priced.—Our assortment of flies were selected by an expert and we guarantee them to get the fish.—Look us over. THE TWO MACS 148 Great George St.

Moore & McLeod Ltd. 119-121 Queen Street Charlottetown



Tuesday, June 3rd Commences The June Sale of White Wear

THIS GREAT SALE WILL OPEN AT JUST THE MOMENT THAT YOU WANT THE GOODS that are shown in it. We have been preparing for months for this event. New goods have been bought and made ready—and bought in practically every case at prices far below the present figures. You are now invited to visit the display on the second floor—look through it—we'll not press you to buy—but you'll want to buy if you see the display.

See These Corset Covers

LADIES white cotton Corset Covers and embroidery edged with lace and drawn with silk ribbon. Sizes 34 to 44. Price 60c. ANOTHER Corset Cover made of strong white cotton, very prettily trimmed with fine val insertion and lace. Sizes 34 to 42. Price 85c.

STILL another Corset Cover of finer material, with a pretty yoke of fine insertion, edged with lace and drawn with a silk ribbon, has a short sleeve made of insertion to match yoke. Size 34 to 42. Price \$1.15. Other prices 65c, 69c, 75c, 95c, \$1.00, \$1.26, \$1.35, and \$1.45.

Camisoles pink and white, made of silk and crepe de chene, short sleeves and no sleeves. Sizes 34 to 42. Prices ranging from \$1.25, 1.35, 1.50, 1.75, 1.95, 2.25, 2.50, to 3.00.

Chemises—and Envelope Chemises

ENVELOPE Chemises made of fine nainstook, has a deep yoke of val insertion and pretty embroidery edged round neck and arms with lace to match. This makes a very dainty garment. Sizes 36, 38, 40. Price \$1.50. ANOTHER line of Chemises Made of strong white cotton, embroidered scallop, has a pretty spray worked in solid design. Sizes 36 to 42. Price \$2.00. Other prices, \$2.25, 2.50, 2.75, 3.00, 3.50, 4.50.

Silk Chemises, Flesh and White. Price \$4.00 and \$4.95

Corset Cover and Drawer Combination

CORSET COVER and Drawer Combinations, made of strong white cotton, embroidered round neck and arms with a small scallop, drawn at the waist with tape. Sizes 36 to 40. Price \$1.75, \$1.95, \$2.25. Ladies' White Cotton Drawers, has a four inch frill edged with lace. Sizes 23, 25, 27. Price 50c.

HERE IS ANOTHER garment of finer cotton finished with a frill of embroidery, very neatly and strongly made, both styles. Sizes 23, 25, 27. Price 69c. ANOTHER line of Drawers made of strong white cotton has fine pin tucks and finished with an eyelet embroidered flounce. Both styles. Sizes 23, 25, 27. Price 69c.

Silk Bloomers, flesh and white. Price \$2.35 & 3.75. STILL another range of fine nainstook finished with three inch swiss design, making a very dainty garment. Sizes 23, 25, 27. Price \$1.50. Other Prices, \$1.25, 1.35, 1.50, 1.85 and 2.25.

Pretty Petticoats

WHITE UNDERSKIRTS, made of strong cotton has a tucked flounce edged with embroidery. Sizes 34, 36, 38 and 40. Price 85c. LADIES' white and flesh brassiers and bandeau, hooked front and back. Styles to fit all figures. Sizes 32 to 44. Prices 45c, 60c, 75c, 85c, \$1.00, 1.15, 1.25, 1.35, 1.50.

HERE is another skirt of much finer cotton has a very deep tucked flounce with a row of insertion and lace to match. Length 34, 36, 38, 40. Price 1.95. ANOTHER skirt of finer cotton has a deep flounce of eyelet embroidery, length 34, 36, 38 and 40. Price \$1.25. FLESH colored wash silk underskirt has two flounces of fine shadow lace. Price \$6.25.

Other Prices, \$2.15, 2.25, 2.95 and 3.50.

Neat-Dainty-Nightgowns

LADIES' GOWNS made of strong white cotton kimona sleeves, finished round neck and sleeves with torchon lace. Slip over style. Sizes 58 to 60. Price 65c. GOWN of fine cotton slip-over kimona style, embroidered round neck and sleeves with neat scallop has a very pretty front worked in eyelet and solid embroidery. Sizes, 56, 58 and 60. Price \$1.50.

STILL another with a "V" shape yoke of fine nainstook, a very pretty design forming an empire effect. This gown is sleeveless giving a new, pretty and cool effect to the garment. Sizes, 56, 58, 60. Price \$2.15. Another Gown made of finer cotton has deep yoke front and back composed of lace and insertion, finished with edging to match and drawn with a wash silk ribbon. Sizes 56, 58 and 60. Price \$1.00.

Other Prices \$2.25, 2.50, 2.75, 2.95, 3.15, 3.50 and 4.25. BUTTON front, long sleeves, embroidery trimmed. All sizes. Prices \$1.25, 1.35, 1.50, 1.75, 2.00, 2.25, 2.75 and 3.00.

Silk Gowns, flesh and white, \$4.50, 4.95, 6.00, 6.26.