

BALTIMORE

DENTAL ROOMS

Brown Block Victoria Row.

DRS. WRIGHT & LODGE

Graduates of the Baltimore College of Dental Surgery.

SAVE YOUR TEETH

Unill quite recently whenever a person had the toothache, his friends one and all immediately gave him the sage advice, "Go and have it pulled." We extract teeth when necessary by the most painless method yet discovered and replace them with a plate or with crown and bridge work. BUT OUR PRINCIPAL BUSINESS IS SAVING AND FILLING TEETH. If you have a cleft palate give us a call. We can refer you to cases in this province that we have treated with wonderful success.

Moderate Charges. Satisfactory Work.

Permanent Branch at Montague, N.S.

Dr. WRIGHT in Charge

12, Tues, Thur, Sat, wif.

SWEDA ACQUITTED OF MURDER CHARGE.

EDMONTON, N. W. T., July 16.—(Special)—Nils Johnson, the Sweda whose trial for murder has been in progress here, was acquitted last night. The evidence against him was very weak.

ALWAYS GROWS WORSE

If not Corrected Dyspepsia Gradually Increases in Pain and Distress.

There is a Sure Remedy—Dodd's Dyspepsia Tablets Always Cure—Prompt Relief and a Permanent Restoration Follows Their Use.

Some diseases come and go, that is they are worse at certain times and under certain conditions, than others.

But Dyspepsia sticks. It always remains until absolutely driven out by a satisfactory remedy.

And it always increases in torture and distress if not controlled or corrected.

Cases have been recorded in which it has apparently disappeared for a time after a careful course of dieting, but these are rare, indeed, and in every such case it has returned with redoubled force.

Once its bonds are riveted on you, you are its slave till death or till you find an absolute remedy.

Dodd's Dyspepsia Tablets offer you a complete emancipation from the terrors of this monster of disease.

Check it at once by Dodd's Dyspepsia Tablets and persevere in the treatment till you are free.

If not immediately corrected you may be sure it will continue to grow worse and worse. It is easier to cure your stomach trouble now than it will be next week, next month, or next year.

Don't pass it off. Begin a treatment of Dodd's Dyspepsia Tablets to-day.

Many a man and woman postpones any treatment for these Stomach diseases in the false hope that they will leave of their own accord.

The first case of this kind has yet to be recorded. Dyspepsia must be treated to be got rid of.

Strong, vigorous, prompt, and persevering measures must be taken to successfully grapple with such a stubborn foe.

Dodd's Dyspepsia Tablets are made for this purpose and they never fail.

ACADIA UNIVERSITY AND ITS AFFILIATED SCHOOLS.

In our advertising columns will be found the announcements of the educational institutions at Wolfville, conducted by the Baptists of the Maritime Provinces. These institutions began their work seventy years ago, and have made a most honorable record. They are at present in a higher state of efficiency than ever, and are enjoying a high degree of prosperity.

Horton Academy is a residential school for boys and young men, offering a choice of four courses styled, respectively, the college matriculation course, the scientific course, the general course, and the business course. It has a large staff of competent teachers. Horace L. Brittain, M. A., the Principal, is reputed to be highly successful in his handling of boys. The Academy Home is heated by hot water, and lighted by electric light, a very comfortable and home-like residence. This school was the pioneer in Manual Training in the Maritime Provinces and has a finely equipped manual training building.

Acadia Ladies' Seminary had a particularly successful year last year under the able direction of the Rev. H. T. DeWolfe, B. A., as Principal, and Miss Evelina K. Patten, as Vice-principal. The Seminary possesses a spacious and imposing building, modern in its appointments, and perfectly adapted to its purpose. The staff is large and has been carefully selected. The literary department has enjoyed the reputation of special excellence, and will continue to be a strong feature. The musical department has been put under the control of a male director holding a European diploma, who will be assisted by other teachers of the highest competency. A Domestic Science department will also be opened in the autumn, under the direction of a graduate from the domestic science department of the provincial Normal School. We are informed that applications for rooms in the residence should be made early, as the space is likely to be inadequate to satisfy all applications.

Acadia University is one of the foremost educational institutions in the Provinces. Its staff of eleven professors is made up of an able body of Christian men, specialists in the departments of instruction, and interested in the building up of Christian character and the development of moral strength in the students, not less than in imparting knowledge to them, and developing in them mental power. Graduates of Acadia are admitted to the senior year of the Harvard arts course without examination. The mathematical and scientific work open to students under the arts degree amply qualifies a student to enter the third year of the McGill course in applied science, or that of the Massachusetts School of Technology. A student who has taken his arts at Acadia therefore not less than a student who has taken his arts at McGill, can in two years more add to his B. A. degree the McGill B. Sc. Wolfville, where these three institutions are situated, is in the midst of one of the most charming districts in the Maritime Provinces, and is a quiet residential town, peculiarly favorable to wholesome living on the part of the students. The institutions, though controlled by the Baptists, are not denominational in the sense of inculcating Baptist tenets. They are positively Christian in aim and spirit, but young people of all denominations are each year found in attendance. Read the advertisements.

GEYSER 800 TO 900 FEET HIGH. WELLINGTON, N. Z., July 15.—Tremendous explosion have occurred at the Waimangu geyser at Rotorua, a height of 800 to 900 feet being reached. Rotorua, the scene of geyser activity, is the terminus of the railway from Auckland. Apart from the healing qualities ascribed to its hot springs, Rotorua enjoy the reputation of being a fashionable resort.

SMALLPOX IN ST. JOHN. ST. JOHN, July 16.—There is a case of smallpox on Exmouth street, a Boston lady who arrived a few days ago being the victim. The house is strictly quarantined.

BUSINESS BOOM WITH UNION TRADE. Come, come to the Union Store where everybody is going and get your summer suit. Prices very moderate; satisfaction guaranteed or your money refunded. Cloth sold by the yard cheaper than any store in the City. Come and see us and be convinced. Terms cash. JAS. CALLAGHAN.

WANTED.—A girl for general housework. Apply to Mrs. Charles McGregor, Longworth Avenue. 7-19 d 1 pd

LOST.—In Charlottetown on June 30th, a lady's black shopping bag with initial "W" worked on each side and containing purse with owner's name written on lining. Finder, will leave at this office and be rewarded. 7-19 d 1 w 11 pd

WANTED.—A refined woman, over twenty-five, for a high-class position. Experience as a teacher or saleswoman desirable. References. Y. Box 122, City. 7-17 31 pd

TO LET.—A house situated on Weymouth Street, nearly opposite Mr. Chas. Palmer's residence with sewerage, bath, etc. Possession given at once. Apply to S. F. Blanchard, Barrister, etc. 7-11 d 11

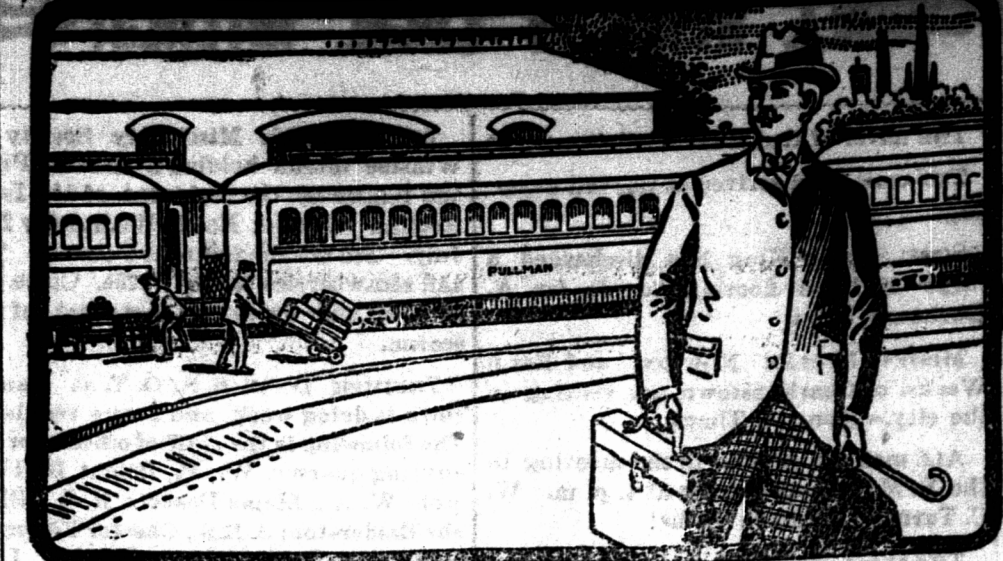
FOR SALE.—House and Lot on Cumberland Street, adjoining the residence of L. L. Beer, Esq. Apply to Wm. Vessey at Fenwick & Chandler's. 7-11 d 11

Summer boarders can be comfortably accommodated at Victoria, Cranston. Delightful grounds with shady trees, good bathing, fishing and within short walk of wharf. Apply here for particulars. 6-25 d 11

WANTED.—At Hillsborough House, the residence of the Master of the Rolls, a cook. Application to be made to Mrs. G. W. Hodgson, Grafton Street. 7-11 d 11

WANTED.—A good reliable man to take charge of a farm near the City. Apply to John Wheatley. 6-23 d 11

FOR SALE.—The North American Hotel, centrally situated on Kent Street. Apply at this office.—10 d 11



Travellers and Tourists

Traveling from place to place are subject to all kinds of Bowel Complaint on account of change of water, diet and temperature.

Dr. Fowler's Wild Strawberry

is a sure cure for Diarrhoea, Dysentery, Colic, Cramps, Pains in the Stomach, Seasickness, Cholera, Cholera Morbus, Cholera Infantum, Summer Complaint, and all Fluxes of the Bowels in Children and Adults.

Its effects are marvellous. It acts like a charm. Relief is almost instantaneous. Does not leave the Bowels in a constipated condition.

Coke Dandruff Cure

As a Hair Tonic, is cleansing and invigorating. It does marvellous work in stimulating the hair to a renewed growth.

DANDRUFF is the root of all hair trouble. Get rid of it at once, and save your hair before you become bald. We guarantee **Coke Dandruff Cure** to cure. Price 50c. and \$1.00 a bottle at all druggists.

A. R. BREMER CO., Limited, Toronto, Chicago, New York, London, Paris

All Patents look alike

but there are good patents and "other" patents. But gentlemen, with **Sovereign Shoes** we can give you as broad an assurance of wear and service as can be given on any patent leather, and broader than on most. Only leathers of the highest repute are used in their manufacture. They embrace patent kid, patent colt, patent and enamel calf skin with soles as you like them. Low cuts \$3.00 to \$5.00. High cut \$4.00 & \$5.00.

Look for the price on the sole.

For Sale by **MORRIS & SMITH, Charlottetown**

How Are You

Going to keep cool this summer, if you do not wear one of our light weight Suits? They are a triumph of tailoring art: Stylish, Dressy Comfortable, perfect in Cut Fit and finish, and distinctly moderate in price. In elegant Serges, Cheviots, colored Worsteds, Stripes and high class fabrics of various patterns \$15. to \$25.

FASHIONABLE, SEASON-ABLE, SERVICEABLE. Light colored and light weight, Oxford Tweed. Suits we make for \$13.00 have no superior in their class, the Suit par excellence for the money.

D. A. BRUCE. Tailor, Furnisher and Hatter.

Where the Public Is Always Pleased

Is the place for you to buy. We have in our store-rooms the greatest display of finished work in Monuments, Headstones, Tables, &c we have ever offered to the public.

All kinds of Marble, including Brandon, Italian, Aspiranza, Light and Dark Blue, also Freestone and Red and Grey Granite, all of which we offer at bottom prices. Designs furnished for any description when requested.

E. F. PURDY, Kent Street, Charlottetown. 3-3 Wed. Sat. & w 3m.

MAMMOTH TEA PARTY

—AND—
Demonstration
Under the Auspices of
C. M. B. A. Tignish
—ON—
Wednesday, July 23rd.

Branch No 261 C. M. B. A. will hold a grand Tea Party on the beautiful church grounds, Tignish, on July 23rd prox. Everything will be provided for the entertainment of the thousands who will be present on that day. Tignish is famed for the size and success of its tea parties and the committee are sparing no pains to make the present Grand Tea even eclipse its predecessors. A special train will be run from Charlottetown and an opportunity is thus afforded people from the east to see this most lovely part of our province at a nominal figure, and see it too, in its loveliest garb. Tignish boasts of the finest ecclesiastical buildings in the province which in themselves will repay a visit. All the ordinary amusements at gatherings of this kind, besides many novel features will be provided, and the visitors can be assured of a pleasant outing.

Remember the date, then, July 23rd. Come and bring your friends with you. The following are train arrangements.

STATION	FARE	TRAIN DEPARTS
Charlottetown	\$1.25	5:30 a.m.
Royalton Junction	1.25	5:45 "
Wilton	1.25	5:57 "
North Wiltshire	1.25	6:14 "
Hunter River	1.25	6:24 "
Fredericton	1.15	6:37 "
Elliotts	1.15	6:43 "
Bradford	1.15	6:49 "
Emerald	1.15	6:51 "
Cape Traverse	1.15	6:59 "
Albany	1.15	6:06 "
Kinkora	1.15	6:19 "
Fredericton	1.15	6:24 "
Kensington	95	7:19 "
New Annan	95	7:31 "
Summerside	95	7:40 "
Misouche	95	7:45 "
Wellington	95	7:53 "
Richmond	95	8:33 "
Norham	75	8:37 "
Port Hill	75	8:48 "
Ellerslie	75	8:53 "
Conway	75	9:04 "
Portage	75	9:11 "
Coleman	75	9:31 "
O'Leary	60	9:41 "
Howland	60	9:46 "
Bloomfield	45	9:57 "
Stimdsal	45	10:12 "
Alberton	55	10:22 "
St. Louis	20	10:30 "
De Bois	20	10:30 "
Tignish	Arrive	11:00 "

Returning special train will leave Tignish at 5:00 p.m.

Excursion return tickets will be issued from stations east of Royalton Junction at one way second class fare good going by regular afternoon trains July 22nd, return by special train to Charlottetown on 23rd, and from Charlottetown by regular trains on 24th.

P. C. MURPHY, Secretary
7-21-14-16-18-19-21-22

NOTICE TO THE PUBLIC!

I have decided to place my team at the disposal of the public at reasonable rates, to convey passengers to or from all boats and trains, to or from any part of the City. Orders will be carefully attended to. Telephone 241.

P. S. BROWN,
Reveré Hotel, Kent St.
July 16 th

STERN'S

Fashionable Liverv

Fashionable Liverv means stylish rigs; that they are rubber tired, drawn by live and well groomed horses; that we have every style of wagon and carriage that a man of reason could ask for—in fact rigs that compare favorably with those from the finest private stables in town. Our turn-outs haven't got that "Liverv stable-rig" stamp about them.

This is very reasonable weather for driving—roads are excellent and the air bracing. Use telephone if you like—100.

STERN'S
GREAT GEORGE STREET.

Hyndman & Co.

Insurance Agents.
Charlottetown, P. E. I.

FIRE, MARINE, LIFE AND ACCIDENT
Representing the leading British Companies.

Cow-Ease

IS GUARANTEED TO KEEP THE FLIES OFF

THE MAXIMUM IT CAN

If it is used as directed. It does not gum the hair or blister the skin. If your dealer does not have it we will send a gallon can, prepaid, for one dollar.

Carpenter-Morton Co., Boston, U. S. A.

DODD & ROGERS
Wholesale Distributors
Ch'town, P. E. I.

RIPANS

The Modern Dyspepsia Cure. I can't praise Ripans Tablets too much, for they are wonderful. I would not be without them in the house. My husband recommends them to the workmen, and a great many of them have tried them and they say they are the greatest thing they ever saw.

Druggists. The five-cent packet enough for an ordinary occasion. The family bottle, 50 cents, contains a supply for a year.

'Cape Breton Ads.'

ROSS & ROSS, Barristers, Solicitors Notaries. Money to Loan—Straight Loan Banking and Loan Company. Offices in Ross Block, Sydney C.B.

L. L. GULLIVAN Real Estate, Broker. Rents collected. Loans negotiated. Victoria Block, P. O. Box 276, Sydney, C.B.

BURCHELL & MCINTYRE, Barristers, Solicitors, Notaries, &c. Sydney, C.B. CHARLES J. BURCHELL, M.A.L.L.B. ARCHIBALD A. MCINTYRE, B.A.L.L.B.

FRED MOSELEY, H. P. DUCHEMIN, C. L. MOORE. MOSELEY, DUCHEMIN & MOORE, Barristers, Solicitors and Notaries. SYDNEY, CAPE BRETON, N.S. Offices: Ross Block, Charlotte St. Telephone 380. Box 502. 4-11-dw 1 yr.

Archibald & Co. General merchants, Ship Brokers and Coal Agents. Agents of North Sydney Marine Railway. "Pro Patria" North Sydney C.B. 4-12 dw 1 yr.

W. R. TOBIN, Barrister, Solicitor and Notary Public. Commissioner for Newfoundland, Ontario and Quebec. Glace Bay, C.B. 14 d&w

JOSEPH SALTER'S SONS COAL. We sell Port Hood, New Campbellton, Reserve, Old Sydney, Gowie & Greener's. Best Terms and Lowest Prices. Marine Insurance. Charters for Vessels always on hand. North Sydney, Cape Breton. 4-12 dw 1 yr

C. SIDNEY HARRINGTON, Q. C. CHARLES F. FURBER, L. L. B. JOSEPH F. FOLEY, L. L. B. H. C. DOUGLAS, MORLEY HALE, B. A., L. L. B. DOUGLAS & HALE Barristers, Solicitors, &c. GLACE BAY, N.S. 4-12-dw.

W. CROWE Barrister, Solicitor, etc. Sydney, C. B. 4-15 d w

G. L. MURPHY & CO. Sydney, C. B. COMMISSION MERCHANTS, ETC. Wanted to purchase 1000 young pigs. Write stating price, etc. to P. O. Box 37. 4-15-dw 1 yr.

HARRINGTON & FULLERTON Barristers, etc. Cable Address, Harrington, Halifax. OFFICES, HALIFAX AND SYDNEY, C. B. Halifax Offices, ROY BUILDING. Sydney Offices, ROSS BLOCK. Correspondence relating to Cape Breton should be directed to Sydney, C. B.

FIRST AID TO THE INJURED POND'S EXTRACT

FOR BURNS, SPRAINS, WOUNDS, BRUISES, ANY SORT OF PAIN.

Used Internally and Externally.

CAUTION: Avoid the weak watery Witch Hazel preparations, represented to be "the same as" Pond's Extract, which easily sour and often contain "wood alcohol" or irritant externally and, taken internally, a poison.

Allen's Lung Balsam

The best Cough Medicine.

ABSOLUTE SAFETY should be the first thought and must be rigorously insisted upon when buying medicine, for upon its safety depends one's life. ALLEN'S LUNG BALSAM contains no opium, in any form and is safe, sure, and prompt in cases of Croup, Colds, deep-seated Coughs. Try it now, and be convinced.

P. E. I. RAILWAY

On and after Monday, June 16th, 1922, the trains of this railway will run daily (Sunday excepted) as follows:

Trains Outward.		Stations.		Trains Inward.	
No.	Time	No.	Time	No.	Time
1	5:00 P.M.	1	5:00 P.M.	1	5:00 P.M.
2	5:30 P.M.	2	5:30 P.M.	2	5:30 P.M.
3	6:00 P.M.	3	6:00 P.M.	3	6:00 P.M.
4	6:30 P.M.	4	6:30 P.M.	4	6:30 P.M.
5	7:00 P.M.	5	7:00 P.M.	5	7:00 P.M.
6	7:30 P.M.	6	7:30 P.M.	6	7:30 P.M.
7	8:00 P.M.	7	8:00 P.M.	7	8:00 P.M.
8	8:30 P.M.	8	8:30 P.M.	8	8:30 P.M.
9	9:00 P.M.	9	9:00 P.M.	9	9:00 P.M.
10	9:30 P.M.	10	9:30 P.M.	10	9:30 P.M.
11	10:00 P.M.	11	10:00 P.M.	11	10:00 P.M.
12	10:30 P.M.	12	10:30 P.M.	12	10:30 P.M.
13	11:00 P.M.	13	11:00 P.M.	13	11:00 P.M.
14	11:30 P.M.	14	11:30 P.M.	14	11:30 P.M.
15	12:00 P.M.	15	12:00 P.M.	15	12:00 P.M.
16	12:30 P.M.	16	12:30 P.M.	16	12:30 P.M.
17	1:00 P.M.	17	1:00 P.M.	17	1:00 P.M.
18	1:30 P.M.	18	1:30 P.M.	18	1:30 P.M.
19	2:00 P.M.	19	2:00 P.M.	19	2:00 P.M.
20	2:30 P.M.	20	2:30 P.M.	20	2:30 P.M.
21	3:00 P.M.	21	3:00 P.M.	21	3:00 P.M.
22	3:30 P.M.	22	3:30 P.M.	22	3:30 P.M.
23	4:00 P.M.	23	4:00 P.M.	23	4:00 P.M.
24	4:30 P.M.	24	4:30 P.M.	24	4:30 P.M.
25	5:00 P.M.	25	5:00 P.M.	25	5:00 P.M.
26	5:30 P.M.	26	5:30 P.M.	26	5:30 P.M.
27	6:00 P.M.	27	6:00 P.M.	27	6:00 P.M.
28	6:30 P.M.	28	6:30 P.M.	28	6:30 P.M.
29	7:00 P.M.	29	7:00 P.M.	29	7:00 P.M.
30	7:30 P.M.	30	7:30 P.M.	30	7:30 P.M.
31	8:00 P.M.	31	8:00 P.M.	31	8:00 P.M.
32	8:30 P.M.	32	8:30 P.M.	32	8:30 P.M.
33	9:00 P.M.	33	9:00 P.M.	33	9:00 P.M.
34	9:30 P.M.	34	9:30 P.M.	34	9:30 P.M.
35	10:00 P.M.	35	10:00 P.M.	35	10:00 P.M.
36	10:30 P.M.	36	10:30 P.M.	36	10:30 P.M.
37	11:00 P.M.	37	11:00 P.M.	37	11:00 P.M.
38	11:30 P.M.	38	11:30 P.M.	38	11:30 P.M.
39	12:00 P.M.	39	12:00 P.M.	39	12:00 P.M.
40	12:30 P.M.	40	12:30 P.M.	40	12:30 P.M.
41	1:00 P.M.	41	1:00 P.M.	41	1:00 P.M.
42	1:30 P.M.	42	1:30 P.M.	42	1:30 P.M.
43	2:00 P.M.	43	2:00 P.M.	43	2:00 P.M.
44	2:30 P.M.	44	2:30 P.M.	44	2:30 P.M.
45	3:00 P.M.	45	3:00 P.M.	45	3:00 P.M.
46	3:30 P.M.	46	3:30 P.M.	46	3:30 P.M.
47	4:00 P.M.	47	4:00 P.M.	47	4:00 P.M.
48	4:30 P.M.	48	4:30 P.M.	48	4:30 P.M.
49	5:00 P.M.	49	5:00 P.M.	49	5:00 P.M.
50	5:30 P.M.	50	5:30 P.M.	50	5:30 P.M.
51	6:00 P.M.	51	6:00 P.M.	51	6:00 P.M.
52	6:30 P.M.	52	6:30 P.M.	52	6:30 P.M.
53	7:00 P.M.	53	7:00 P.M.	53	7:00 P.M.
54	7:30 P.M.	54	7:30 P.M.	54	7:30 P.M.
55	8:00 P.M.	55	8:00 P.M.	55	8:00 P.M.
56	8:30 P.M.	56	8:30 P.M.	56	8:30 P.M.
57	9:00 P.M.	57	9:00 P.M.	57	9:00 P.M.
58	9:30 P.M.	58	9:30 P.M.		