

Pimples Itched So Could Not Sleep. Healed by Cuticura.

"My face was covered with pimples and blackheads. The pimples were rather small, hard and red, and spread to my neck. They itched so badly that I could not sleep at night, and when I scratched them they scaled over and were very sore. The trouble lasted about a month. My doctor recommended Cuticura Soap and Ointment so I purchased some, and after using one cake of Cuticura Soap and one box of Cuticura Ointment I was completely healed." (Signed) Miss Cleghorn, 472 Main St., Toronto 13, Ont., July 8, 1929.

Soap 25c. Ointment 25c. and 50c. Sold everywhere. Sample each free. Address Canadian Depot: J. T. Wain Company Limited, Montreal.

\$1.00

Your Dollar Buys More At **HOLMAN'S**

APRIL 14th. to 26th.

- 25 inch Mama Doll. \$1.00
- 2 Vases, colored glass, 8 inch by 11 inches high, per pair \$1.00
- 3 Fancy Milk Pitchers, about 1, 2 and 3 pint size, set of three for \$1.00
- 7 Pink Band Cups and Saucers for \$1.00

CROCKERY DEPARTMENT

HOLMAN'S

SUMMERSIDE — CHARLOTTETOWN

Paint — Paint

The Sherwin-Williams Paint

MADE BY

The Largest Paint Organization

in the

British Empire

ONLY ONE QUALITY

THE BEST

We have re-stocked a full line of this justly celebrated PAINT and have put in a complete stock of painters requirements including Linseed Oil, Turpentine, Driers, Fillers, Colors both ground in oil and dry, Murex, Ochres, Metallic Oxides, Carbon paint, Roofing preparations, Glass, Putty, Brushes, Sandpaper, etc.

BOUGHT RIGHT and PRICED RIGHT to be Sold for CASH ONLY.

Find us with these goods in our FORD SERVICE STATION, North end of bridge near the Railway Station.

POOLE & THOMPSON LTD.

Central Guardian

BUYING POTATOES. — Geo. H. Toombs & Son. 3044-4-14-31.

JUST ARRIVED—A car of the famous Frost Wire Fencing. Carter & Co., Ltd. 3070-4-15-31

GARDEN PEAS, plant as early as possible. American Wonder for early. Stratagem and Telephone are good varieties for later sowing. Carter & Co., Ltd. 3070-4-15-31

SECURE YOUR TICKETS for "Climbing Roses" the Easter Monday Play at Reddin Bros., The Two Macs and Victor Coyle's. 3061-4-15-31.

IMPERIAL PUPPY FOOD is required by growing Fox Pups. 3097-4-16-41

COUPONS EXCHANGED for "Climbing Roses" the Easter Monday Play at the Prince Edward Theatre on Friday, April 18th at 9.30 A. M. for both performances. 3061-4-15-31.

"CLIMBING ROSES" coupons will be exchanged at the Prince Edward Theatre Friday morning, April 18th at 9.30 A. M. for both performances. 3061-4-15-31.

TO ENSURE RAISING FOX PUPS to maturity, start feeding Imperial Puppy Food early and continue regularly throughout the season. 3097-4-16-41

PROF. FLETCHER offers for sale his Sherlock-Manning Piano in excellent condition, also a DeForest Crossley Electric Radio in use only a few months. 4-18-31.

S. S. HARLAND—Owing to heavy freight on East River this week end, it will not be possible to take up the West River service until the following Saturday. 3139-4-17-31.

FEED IMPERIAL PUPPY FOOD regularly for health, normal development of your foxes. Fresh stock always procurable from Imperial Blount Co., Ltd., City, and leading P. E. I. distributors. 3097-4-16-41

PASSION WEEK AT ST. JAMES CHURCH.—Services every evening this week except Saturday at 8 o'clock, with additional service on Good Friday afternoon at 3 o'clock. Addresses by Rev. R. Moorehead Legate, B. D. 3034-4-14-31.

R. H. HUGHES, DISTRICT MANAGER Manufacturer Life Insurance Co., and general agent for fire, sickness, accident and automobile insurance, has moved his office to the Cameron Block, 150 Richmond Street. 3169-4-18-11.

EASTER SERVICES AT THE BAPTIST CHURCH.—All services throughout the day, at the Baptist Church will be of deep interest. Dr. Vincent preaches at the morning worship, taking as his theme "Is it Nonsense?" At the evening service he will speak on "The Night After the Resurrection," following up the series of addresses on dramatic night scenes from the Bible which have been so impressive and helpful. The morning anthems are Berridge's "Easter Morn," Turner's "O Death Where is Thy Sting?" Easter evening the music will include Gault's "They That Sow in Tears," Turner's "Christ is Risen," Gault's "List the Cherub Host", with obligato by Mrs. Roper and Mr. Dingwell. The mixed quartette, Mrs. Roper, Mrs. Henderson, Mr. Quigley and Mr. Dingwell will sing Bohm's "Great is Thy Love." The Sunday School session will be of particular interest.

Visitor From South Australia

At present visiting his cousins Mr. and Mrs. L. L. Jenkins, North Wiltshire, is Mr. Guy W. Halcombe, Judge of the County Court and S. A., of the City of Adelaide, South Australia. Judge Halcombe crossed the Pacific to Vancouver where he stayed and saw the city, conferring with Judge Shaw, who is an Islander. Judge Halcombe's visit is partly official and partly on pleasure, he having been instructed by the South Australian Government to report on the conduct and running of courts in this country. He obtained a great deal of useful information from Judge Shaw, and is adding to his store while visiting here. Yesterday, accompanied by Mr. Jenkins, Judge Halcombe visited Charlottetown and interviewed Chief Justice Mathieson and other Judges of the Supreme Court. Judge Halcombe was also advised to investigate the administration and enforcement of temperance legislation in Canada, and pursuant thereto in Alberta and Ontario he interviewed the authorities, including chiefs of police, all recording the opinion that Government Control

was more satisfactory and workable than Prohibition. He visited Banff for the purpose of seeing the Rocky Mountains, and he is enthusiastic in his admiration of the grandeur of its scenery, saying Banff was simply grand and the scenery magnificent. It may be mentioned that his itinerary so far has included Chicago, Detroit, U. S. A., and Toronto, Niagara Falls, Ottawa, Montreal and Quebec where he saw Wolfe's Monument and the Monument of Montcalm. He leaves St. John, N. B., on 23rd inst for England, where he will visit other relatives, and Oxford University, where he was educated, making a round the world tour home via the Suez Canal.

In Memoriam

MRS. GEORGE R. HOOPER

On the afternoon of March 8, Milton sustained the loss of one of its highly respected citizens in the homegoing of Mrs. George R. Hooper. Six weeks prior to her death, Mrs. Hooper became ill with pleurisy. All in the way of medical assistance and careful nursing was done for her, and hopes for her recovery seemed bright. On the morning of her death, Mrs. Hooper's recuperative condition was good, but only a few hours intervened, however, before her condition became one of much concern, and in a few minutes she passed on. Mrs. Hooper is survived by her husband, and the following five sons: Heath of Portland; Robert at home; James at Strasbourg, Sask.; Harold, of Detroit; Percy of North Milton, and one daughter, Marion.

The funeral took place from her late residence at North Milton on March 15th. A short service was

held at the home, thence to St. John's Church, where the full service was conducted by the Rector, Rev. C. F. Johnson. Interment was made in St. John's Cemetery. The pall bearers were Hammond Carter, Ira Rodd, Henry Coles, Hammond Hooper, C. E. MacKenzie and Ernest Coles.

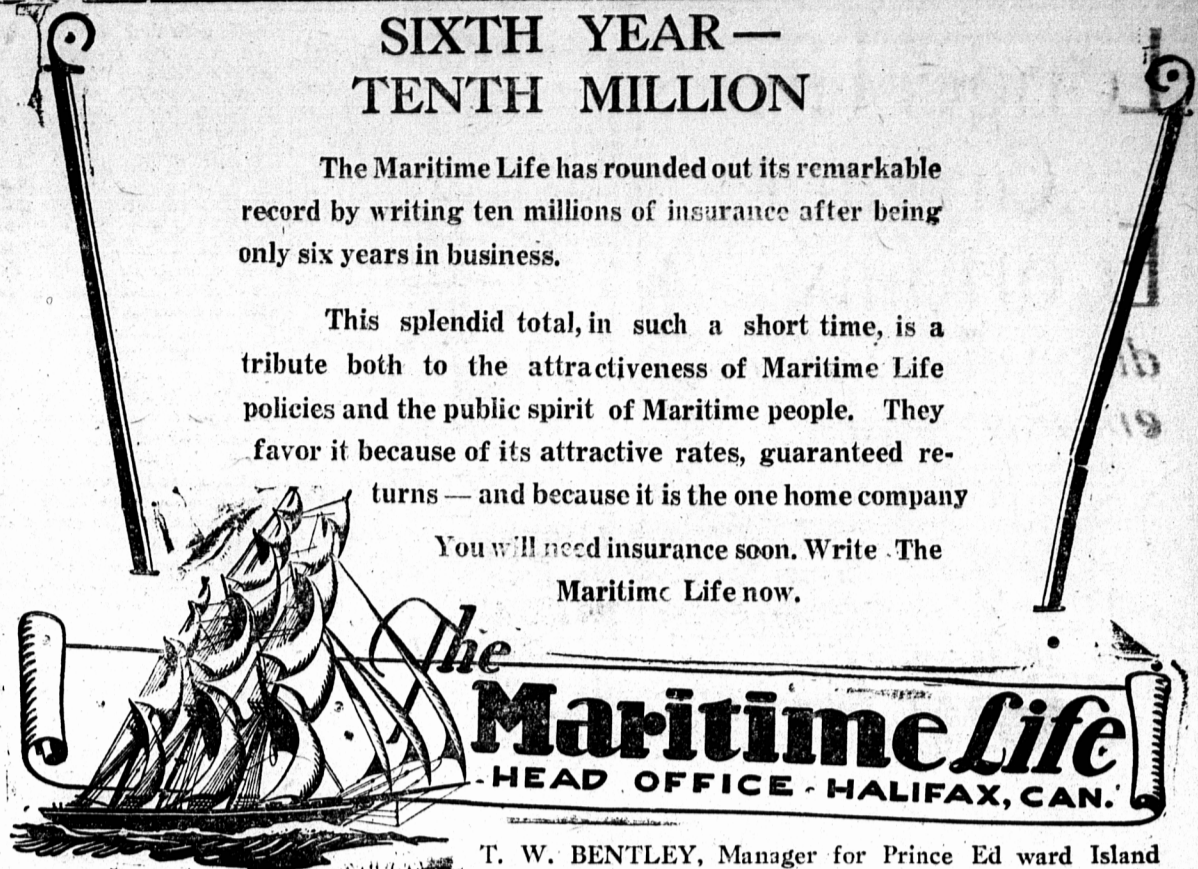
Floral tributes—Crescent, The fam-

SIXTH YEAR — TENTH MILLION

The Maritime Life has rounded out its remarkable record by writing ten millions of insurance after being only six years in business.

This splendid total, in such a short time, is a tribute both to the attractiveness of Maritime Life policies and the public spirit of Maritime people. They favor it because of its attractive rates, guaranteed returns — and because it is the one home company

You will need insurance soon. Write The Maritime Life now.



T. W. BENTLEY, Manager for Prince Edward Island

Crude, uncanny tribal worship Of the quaint northwestern red men Ugly faces, as from nightmares, Make Lon Chaney's mug look winsome

As they grin atop each other In the totem pole's queer carving, Grin and squat like toads infernal, With the varnished complexions And their dental revelations.

By the glaciers of Alaska Rear the totem poles of worship.

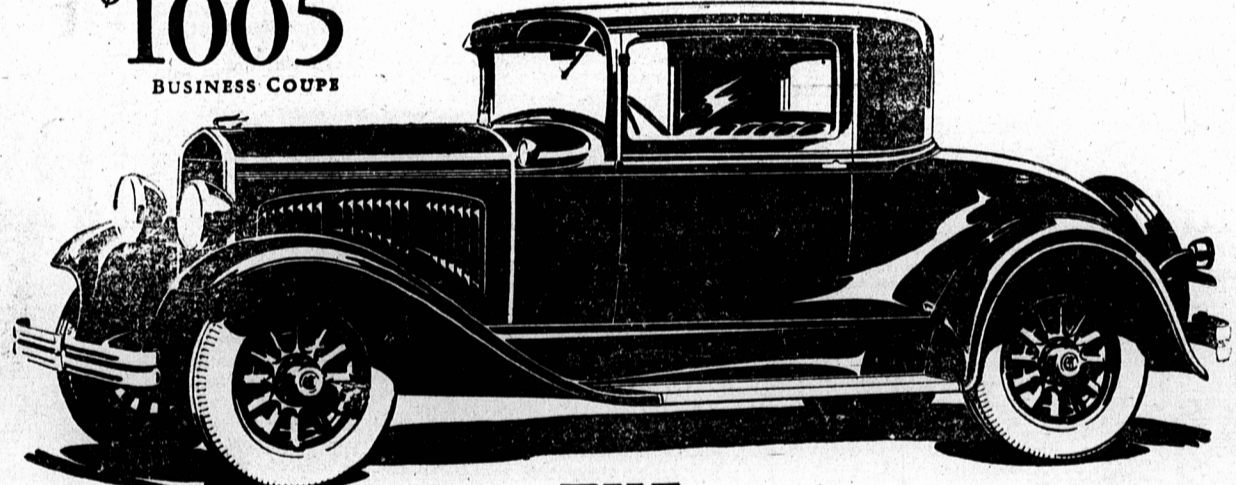
Blear-eyed, hook-nosed, most goos-awful, While on top some wild whang-doodle, Goofer-bird or jabberwocky Makes the whole doggoned ensemble Something human eyes don't treasure.

—"Hit or Miss" in the Chicago Daily News.

LOWEST-PRICED SIX EVER TO BEAR THE CHRYSLER NAME

\$1005

BUSINESS COUPE



THE NEW CHRYSLER SIX

Another great triumph of great engineering

There is no reason—now—why anybody should be denied the thrill and pride of owning a Chrysler.

The new Chrysler Six comes to the public at a price that almost anyone can afford—a splendid tribute to the Chrysler ability to turn out extraordinary values.

It is a typical Chrysler creation from rim to roof—by long odds the finest motor car ever to appear in the field of lower-priced sixes.

You recognize at once all the subtle touches of smart Chrysler designing.

You can't miss the solid substance of Chrysler quality and the precision of Chrysler craftsmanship.

Here at amazingly low price are the great advantages of Chrysler engineering—such advantages as weather-proof internal-expanding 4-wheel hydraulic brakes; a 62-horsepower high-compression engine mounted on rubber; Iso-therm pistons; low-sprung perfectly-balanced chassis; special-type spring shackles and shock absorbers; small base wheels with large balloon tires; and typically Chrysler-styled bodies of new design and construction.



4-DOOR SEDAN, 3-WINDOW.
Business Coupe . . . \$1005
Touring . . . \$1055
Coupe . . . \$1055
Roadster . . . \$1055
All prices f. o. b. factory including standard factory equipment (freight and taxes extra)

Such a car at such a price is hardly believable, yet here it is. We repeat: There is no reason—now—why anybody should be denied the thrill and pride of owning a Chrysler.

CORNEY BROS.

224 Great George Street

Telephone 421



Man!

Look up at this skyscraper, the size of the good twist you swap a few cents for when you ask for

HICKEY NICHOLSON

— "BLACK TWIST" — CHEWING

4-Door Sedan \$715; Coupe, \$735; Roadster, \$760; 2-Door Sedan, \$755; De Luxe Coupe, \$775. All prices f. o. b. factory including standard factory equipment (freight and taxes extra.)

PLYMOUTH

NOW ONE OF THE LOWEST-PRICED CARS IN THE WORLD

PLYMOUTH

CHRYSLER MOTORS PRODUCT

SOLD BY CHRYSLER DEALERS EVERYWHERE

\$735

And up, f. o. b. factory