

TO THE FARMER

Farmers and others interested are invited to contribute to The Farm, The Dairy, The Turf, and Good Roads departments of The Guardian, either by question, correspondence or otherwise. Answers will be given by experts to all questions of general interest and space will be given to any articles that will in any way help to advance Prince Edward Island interests.

Contributors are asked to have their articles at this office early each week, as only a short emergency item can be handled as late as one p.m. Wednesday. All received after that hour cannot appear until the following week.

THE SCHOOL AND THE HOME

Contributions for this department should be addressed to
President Teachers' Association
Guardian's School and Home
P. O. Box 198, Charlottetown.

MORAL TRAINING IN SCHOOLS.

(The Western School Journal.)
Professor Dewey tells of a swimming school in Chicago where youths are taught to swim without going into the water. They are repeatedly drilled on the movements which are necessary for swimming. One of the graduates of this school, when asked how he managed when in the water for the first time, laconically replied, "Sank." Mr. Dewey goes on to say that the teaching of morals in schools much resembles this. It is necessary for teachers to realize that the only

way to prepare pupils for social life is to make them engage in social life. To form right social habits apart from an existing moral situation is to teach children to swim by going through the motions outside the water.

Very frequently in schools there is no social situation. The pupil is simply asked to keep quiet, to conform to certain rules which are more or less arbitrary. He is not asked to consider the school as a social organization of which he is a part, and for whose well-being he is in part responsible. Indeed, it is not too much to say that frequently the teacher finds himself taking note of the pupil's failure to live up to the conventional standard of school requirements. He should be attending to growth, development—the power that is shown to adapt individual life to the life of the community.

"The child should have exactly the same motive for right doing and should be judged by exactly the same standard in school as the adult in the wider social life in which he belongs." It follows from this that emphasis must be placed upon construction and giving out, rather than on absorption and mere learning. In the former the child lives for others, in the latter for himself. The school should provide opportunities for working out something for the good of the whole. He should be led to accept cheerfully what others bring for him. If this principle were applied to oral reading it would mean that the pupils should very often select for themselves that which they are about to express before their fellows. Were the same principle applied to history it would mean that work should be co-operative, rather than would be a division of labor, "each should live for all, and all for each."

In moral training and instruction the teacher must have in mind the welfare of society as a whole. The school must be a miniature society. In it must be expressed justice, self-sacrifice, generosity, kindness to others, practical co-operation in work. The spirit of the school must be the spirit of society as it should be. A good question for every teacher is this: "Would it be a good thing if the spirit of my school were made universal?"

THE FARM

CULTIVATION OF BLACKBERRIES.

A fruit which is not appreciated as it might be is a blackberry, often called thimbleberry. An American bulletin on small fruit culture has this to say of this fruit:

The blackberry is undoubtedly the most profitable of the brambles. They are easily cared for, especially in localities where they do not require covering in the winter. The method of pruning the canes is like that of the black raspberry and since the plant producer suckers, the method of propagation is like that of the red raspberry and the suckers should be cut out the same as suggested with the red raspberry.

The requirements for a good location of a blackberry plantation are similar to those of the raspberry, except that more care must be taken not to select a place where the soil is too rich in nitrogen. The blackberry grows later in the fall than the raspberries and if grown on rich soil will not stop soon enough to thoroughly harden the canes for winter, and winter killing may result.

Although the blackberry is quite free from disease, the same spraying recommended for the raspberries will be found beneficial. Orange rust is frequently found in blackberry plantations. Plants affected should be cut out and burned as soon as found.

For the varieties that require covering during the winter the following method is best: Plow a furrow towards the plants in fall to keep them from being bent over too sharply. Then bend the canes over at right angles to the row and cover with two or three inches of soil. With a fork loosen the roots a little on the opposite side, to relieve the strain. In spring, as soon as the frost is out of the ground, the canes should be raised with a fork.

SOUR MILK FOR CHICKENS.

(Selected.)

Almost every poultryman who has had experience in the raising of artificially-hatched chickens has more or less trouble with white diarrhoea. One of the main causes of death among chicks is this disease, says N. E. Chapman, a United States poultry specialist.

It is very prevalent, and investigations have shown conclusively that the original source is often from parent stock. Many chicks have the disease when hatched, and others contract it from them through feed and forage in infected litter or grounds. This transmission from chick to chick is common during the first three or four days, and this is the period of great danger, especially among chicks of low vitality.

Poultry raisers should feed sour skim milk constantly, at least after chicks are a few days old, as a preventive of this dread disease, and to stimulate their growth. It also increases egg production in the laying flock. Numerous experiments have demonstrated that skim milk and curds, or cottage cheese, are among the most stimulating feeds for poultry of all kinds, except very young chicks. Many claim that sweet milk is much safer until the chicks are at least a week or ten days old. There is a constant supply on nearly every farm, and it should be universally used for the farm flock.

REARING GOSLINGS.

Under ordinary conditions it is not difficult to rear a brood of goslings. When the goslings are a few days or a week old, it is no uncommon thing to tether the goose on some good feeding spot where she can get in the shade if necessary. The tethering prevents the old goose from wandering too far and thus tiring and exhausting her newly-hatched family. Goslings should always be protected from rats. The number of goslings destroyed annually by rats is enormous, and at many times special protection is necessary.

Feed four times daily till they are fourteen days old; after that feed three times. For the first eight days use nothing but stale bread, broken fine, then mix with a little cornmeal and bran, and moisten the whole slightly. Goslings do not like sloppy food, neither does it agree with them. Another good feed for a starter is one-third each of cornmeal, middlings and bran, baked in an oven. Water should be given in fountains and the goslings should not be allowed to swim or take a dip until they have their new coat of feathers.

Aquiri 2.271-4

(Pure Bred Certificate No. 51)

The greatest bred of all the stallions. A great young sire. Futurity bred all over, and the sire of colt trotters of size and substance. Will have a grand lot out at the races this year. Watch them. They are the kind you want, Kaldah, sister of Aquiri is the dam of Baden 2.051, the largest money winner in 1912 and the premier winner, in regular racing events, of all time. Baden's winnings for 1912 amounted to \$35,775 and a Gold Cup valued at \$500.00 for \$30,000. Service Fee \$15.00. Russian Noblemen Prince Viazamski and he was afterwards sold to the J. M. NICHOLSON
202 Kent St.,
Charlottetown.

March 28th/22 year.

THE DAIRY

SOILING FOR THE DAIRY COW.

(By Wm. J. Reid, B. S. A.)
In sections where the dairy cow is the most prominent source of revenue, the question of soiling or growing green crops for feeding during the summer months is of importance. The practice may be adopted in a complete or partial way, that is, it may extend throughout the full pasture season or only when the pasture is insufficient to maintain the herd at the highest possible milk flow.

By a complete system the herd will be dependent on the crops grown and fed in the stall and will only need sufficient acreage to ensure proper daily exercise. Such a system will apply to a very extensive method of cultivation. Its general adoption in this country, where land is so plentiful, and, relatively so cheap, is too remote to warrant a lengthy discussion. However, it has been practised with success in thickly populated countries.

Partial soiling is an important part of a reliable system of dairying. To realize its value is to observe that it is an effective practical way of supplementing the pastures during the dry part of the summer season. By its adoption a supply of succulent food will be on hand when the grass has lost its feeding value and in no other way can the cows be kept at a maximum milk flow with so small an outlay.

Soiling will enable the dairyman to grow more food per acre than any other system. Where pasturing is the full practice the first injury comes from the animals eating off the young plants before they have attained substance or strength. This is quite noticeable where cows are allowed to go on a pasture too early in the spring thus never allowing it to produce as much fodder as if it had been allowed a reasonable start. Less injury and waste comes when cows are fed in the stable than when they are pastured or fed in a paddock.

Then the cows may be kept in much better condition when there is an abundance of green food to be fed at the discretion of the feeder rather than depend on the season and soil to furnish sufficient pasture grass. During the months of dry pasture, intense heat and troublesome flies the cows can be stabled in the heat of the day and will be kept in condition as well as producing more milk than those left to the mercy of the bad influences. Much of the energy that should go to the production of milk is often expended by the cows as they search for a satisfying meal over a large area of scanty pasture, or, as they seek a comfortable spot where the flies and heat are less troublesome.

In sections where intensive farming is in operation soiling is credited with increasing the production of milk 100 per cent by the fact that more animals may be kept and the individual production greatly increased.

The prevalent objection held against a system of partial soiling is that it increases the labor of the farm. This is certain to a limited extent, but if the advantages in the improved conditions of the stock and increased production are considered the question is easily solved. We also know that many cows are being kept that are not capable of paying a profit above the feed consumed and these were discarded and the same labor given to the few kept, which would be of a reliable quality, that is now given to the full herd, the result would be less agitation over the labor involved and more genuine business satisfaction.

During the early part of the pasture season the grass is usually capable of supplying the cows for one month and a half. However, there are seasons when it is advisable to feed early, or, if sufficient pasture has not been allowed, the first crop is sown. This can be used from June 25th to July 20th, and will take approximately one acre for every ten cows.

Following the clover the grain crops will be the next class fit for use. Among the combinations for soiling, as combinations are always more reliable than single grains, one consisting of 1 bus. peas and 2 bus. of oats has always given satisfactory results. Also one consisting of 1 bus. peas, 1 bus. vetches and 2 bus. oats has given good results. The improvement in quality of fodder over the first. Either of these combinations should be sown in plots as early in May as possible. Each plot should be sufficient to feed the herd one week, or about 1/2 acre for every ten cows and the plots should be sown one week apart. As many plots should be sown as will feed the herd from July 20th to August 25th, or even September 1st, if the season is open.

The crops that follow grain will be turnips and corn. The turnips can be sown during the last week of May and will be ready for feeding by August 25th. It will take 1/2 to 1 of an acre to feed ten cows one week and as this is one of the reliable winter foods it can be fed continuously after August 20th, if practicable. Corn is one of the reliable crops for feeding as a substitute for or with roots. It should be sown the last week of May to June 10th, and will be ready for feeding by September 1st. For each ten cows 1/2 of an acre should be sown for each week's feeding.

In judging the advisability of adopting such a system as compared with maintaining the herd on pasture the following comparison of the return per acre for each crop will be of value.

PASTURE.
1 to 3 acres will feed 1 cow for 5 mos. or 150 days.
1 to 3 acres will feed 10 cows for 15 days.
CLOVER.
(10 tons green fodder per acre.)
1-3 sq. rd. will feed 1 cow 1 day.

1 acre will feed 1 cow 286 days.
1 acre will feed 10 cows 28 days.

OATS & PEAS.

(11 tons green fodder per acre.)
1/2 sq. rd. will feed 1 cow for 1 day.
1 acre will feed 1 cow for 320 days.
1 acre will feed 10 cows for 1 month.

CORN.

(20 tons green fodder per acre.)
1-3 sq. rd. will feed 1 cow for 1 day.
1 acre will feed 1 cow for 570 days.
1 acre will feed 10 cows for 2 mos.

ROOTS.

1-5 sq. rd. will feed 1 cow for 1 day.
1 acre will feed 1 cow for 856 days.
1 acre will feed 10 cows for 2 1/2 mos.

The comparison of these same crops will be changed if the average yield per acre of any district is different from the figures given. The daily consumption of the average cow is 70 lbs. green fodder, from which we can readily judge the economy of growing and feeding the crops that supply food for the longest time.

THE MARKETS

HALLAMS WEEKLY MARKET REPORT. HIDES, SKINS, WOOL, JUNK.

BEEF HIDES are coming to market in fair supply, tanners are buying on a conservative basis, owing to the easy leather market. City Butcher Hides, green flat, 12 1/2c per lb. Inspected Hides No. 1 13c, No. 2 12c. Country Hides, flat, cured, 1st Fair, 12c, 12 1/2c. Given, 11 1/2c. **CALFSKINS** are moving as fast as received, deliveries being normal City skins green, flat, 16c. Country part cured 17c, cured 17 to 19c according to condition and take-off. Deacons or Bob Calf \$1.00 to \$1.50.

HORSEHIDES are in fair demand at full quotations. City take off No. 1, \$3.50 to \$4.00. Country take off No. 1, \$3.50 to \$4.00. No. 2, \$2.50 to \$3.50. **SHEEPSKINS** are moving freely at current prices. City take off according to size \$1.50 to \$1.85. Country 50c to \$1.75. Spring Lambskins 20 to 35c. Peltis or Shearings 20 to 40c.

WOOL the market is in a healthy condition, large quantities being marketed, growers and dealers realizing on their holdings at the present high prices. Some mills are showing a little more interest and stocks are being absorbed as fast as are justified by the present general market conditions. Washed combed fleeces (coarse) 24c to 25c. Washed clothing fleeces (fine) 27 to 28c. Washed rejections (burry, chaffy, etc.) 20 to 21c. Unwashed fleeces combed (coarse) 16 1/2 to 17c. Unwashed fleeces clothing (fine) 18 to 19c.

TALLOW Of colored goods are accumulating, while the better grades are moving freely. City rendered solid in barrels, No. 1, 6 to 6 1/2c. No. 2, 5 1/2 to 6c. Cake No. 1, 7 to 7 1/2c. No. 2, 6 to 6 1/2c.

HORSE HAIR. Farmer or pedler stock in fair supply at current prices. Farmer pedler stock 36 to 40c.

OLD RUBBERS, JUNK, ETC., is absorbed as fast as received at full quotations. Rubber Boots & Shoes according to trim 7 1/2 to 9c. Auto tires, 7 to 8c. Bicycle tires, 3 to 4c. Lead, heavy 3 1/2 to 4c. Tea lead 2 1/2 to 3 1/2c. Brass, heavy 9 to 10c. Light 6 to 7c. Copper, heavy 11 to 12c. Light 10 to 10 1/2c. Zinc 2 1/2 to 4c.

PLAN FOR A LARGER MILK YIELD.

What virtue is there in heredity when it comes to abundant milk production per cow? Many a dairyman notices a cow is good, her heifers may turn out to be good milkers, sometimes they do not. What is the trouble? Apart from such considerations as feed, care and health, look for one moment at the possible value of the sire.

It has been noted many a time that the cows bred to a particular bull have dropped good milking progeny; that bull CAME FROM GOOD MILKING ANCESTRY. There is the virtue of heredity worth thousands of dollars to our dairying industry. The melancholy reflection is that scores of these good milkers can be traced to sires that have been sold for beef long before their real value had become known.

Every dairyman who is doing anything at testing his individual cows, and all progressive dairymen appreciate the far reaching benefits of such study, knows that it would be worth at least 1,200 pounds of milk extra per cow to secure the right bull. All members of cowtesting associations should cooperate in the purchase of good pure bred sires, changing them round after two years in one section, and prove thereby the immense value of heredity in their own herds.

THE TURF

HORSE NOTES.

The racing at Johnston's River was considered fairly good. The track was in very poor shape.

Moth Miller, the speedy Banita 4 year old, seems to be the 1913 sensation. His easy rolling gait, good manners and a whole barrel of "fast stuff" will no doubt hang a 2.18 mark to his credit this fall, should his owner wish it.

P. S. Brown's Aquiri colt is going splendidly, a nicely gaited chap, too.

Iona Girl is right on the job this summer. Tong is looked upon as our biggest winner on the mainland if she

keeps it the way she is now.

One trotter we all look upon as a sure 2.20 marker is the black Tom Medium gelding, Alfred K. He is a "bear" on the brushes and his racing down the "river," was hair raising for such a green one.

The Rexall Girl seems a general favorite with the racing fans. She's game and is always making an effort.

Oakley H. is the best trotting prospect for 1913. Such an easy gaited trotter, steady and fast, hasn't been seen around here for a long while. It's no trouble for Oakley to real a half in 1.10 any day.

Zealot was some game pacer at the river races, and a little more work—and less feed—will show him well up in the summaries this fall.

Dr. Jack Nicholson's Aquiri 2.27 1/2, is staked for some very important races this coming fall. Well if he is quite liable to bring over some of this very same important stake money.

Princeton 2.17 1/2 was the sire of the champion, "Islander" of Southern France, the past winter. This is some credit to such a grand Island sire as Princeton.

Fred Cameron seems to be getting the hang of REXLIGHT. The speedy son of Commodore Ledyard and Parkona, raced a pretty half in 13 Saturday with one of the quarters in 35.

The 2 year old class "stake" for the fall races have been converted into mile heats instead of halves. This ought to bring out a good bunch of two year olds, especially the much handicapped trotters.

One hears quite a bunch of comments on the classes destined for this fall. No doubt the pacers are being treated quite liberally, but it seems to be more pacers start than trotters at our fall meets.

Geo. R. is reeling off some nice halves at the track those days. This speedy son of Parkside Jr. is bound to be well up in the summaries this fall.

Some good work outs took place at the Charlottetown Track this week. Iona Girl, Devilish Dorothy and Hilda S. each stepped a mile in 2.21.

The Rexall Girl has a new owner or rather half owner Hammond Kelly is the lucky man. He stepped her a half easily in 1.08 1/2 last quarter in 32 seconds. Look out for her in Summerside she's the goods.

J. W. Riley has handed over his stallion Prince Crescens to Trainer Fred Cameron to prepare for the stallion stake this fall.

By the way stallion owners are reminded that the final and only payment on the stake is July 5th. \$20 is the amount.

The friends of J. P. Irving are very

sorry to learn that he is ill. We hope that he will be around again shortly.

Hammond Kelly has purchased a half interest in Moth Miller from Arthur Godkin.

Peter Conroy has received a good prospect in a green pacer from the West.

Ginger 2.20 will make his debut this season at Summerside July 1st.

Jack Irving's races on July 17th will draw a good list of entries as the purses are good. The Daniel A. McLeod 2.19 trot and pace will be for a purse of \$250. The 2.24 class will be \$150 and the 2.30 pace \$150. All are mile heats.

George Crescens 2.24 1/2 is said to be working nicely for trainer Dannie Steele. He will be a tough nut to crack in the stallion race.

The Todd Mac colt owned by Dr. J. T. Jenkins of this city is entered in the 2 yr. old futurities at Brocton, Mass., Devilish Dorothy is also entered in the 2.19 class trot.

Margaret Druin (2) 2.15 1/2 is said to be stepping very fast in her three year old form this spring she is a sister of Petrello the 2 year old pacer owned by McKinnon and Irving and at present in Cape Traverse.

Alfred K. the trotter owned by the MacKinnon Drug Co. and bred and raised by Alfred Kehoe fairly electrified the spectators by his bursts of speed. If he gets straightened out he is a 2.20 trotter.

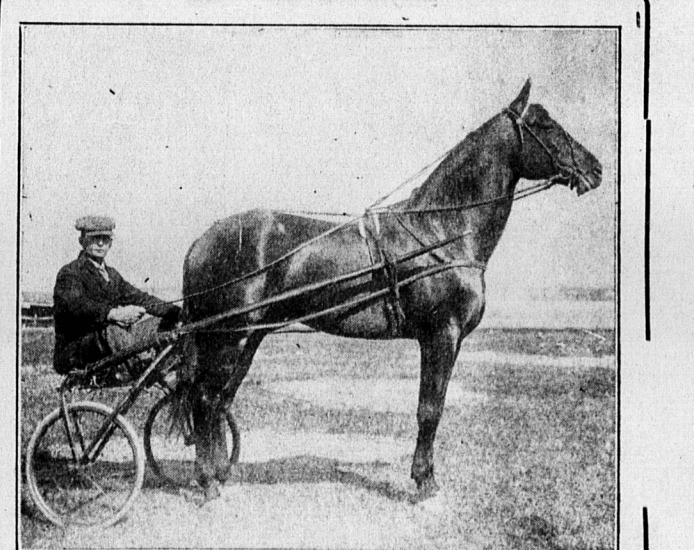
Cherry Ripe 2.21 is recovering splendidly after his recent treatment for sprained ligament Dominion D. is laid up with a sore tendon and will not be a competitor until the fall races. He and Cherry will appear on the turf about the same time.

The early closing races have been declared off at Fredrickton and instead a series of class races have been substituted for this fall.

Don't forget Summerside Races on (Continued on Page Twelve.)



There's Nothing Better Than **SNAP**
For thoroughly cleaning baths and sinks. And it does not hurt the hands like most cleaning powders and soaps. It leaves them smooth and soft. Get a Can To-day. 15c. at Your Dealers. Save the Coupons.
Snap Company Limited, Montreal.



Mayor Todd

(47893)

Son of Todd 2.14 1-4 who sired more 210 trotters than any horse that ever lived for the the time he lived. Sired more 2.10 trotting stallions than any horse that ever lived or died.

Mayor Todd is an ideal specimen of the American trotter, handsome and fast, his service fee should be \$50.00 but to make it so that rich and poor alike, can share, his fee is placed at \$15.00 payable by note at time of first service or 10 per cent for cash.

Will be found at the stable of W.S. McKie's 254 Kent Street, Phone No 375-L.

Hammond Kelly, owner.

June 25-28-July 5

Champion Carriage Stallion of P. E. I.

(Pure Bred Enrolment No. 5 Dept. of Agri.)

BOTTOM (41816) Race Record 2,23 1-4

is a son of Bingara who sired such horses as Baden, 2.05 1-4; Belvasia 2.06 3-4; Bergen 2.06 3-4; Binvol 2.07 3-4, etc. Champion money winning sire of 1912. World's champion sire of 2.08 trotters at 11 years. Sire of 38 two year olds that have trialed in 2.30 or better, etc, etc.

BOTTOM

is a son of Kadika who is the Dam of Berka 2.14 1-4. Winner of ten races and \$2700 in 1912. Biala (3) 2.18 1-2; Brie and Bavian 1-8 in 18 sec. (as yearlings). All above records were over 1/2 mile tracks. Berka was one of the best trotters in the United States last year. All of the above are full sisters and brothers being sired by Bingara.

BOTTOM'S

FULL SISTERS and BROTHERS. Berka 2.14 1-4, Biala (3) 2.18 1-2, Bavian trial (2) 2.30 Brie trotted an 1-3 as yearling in 18 seconds, Brenta which is described as a sensational yearling in the American Horsebreeder of April 20th.

will be at Fred Cameron's Stables [formerly Hurry's Stables] Euston Street near Queen Street, Charlottetown.

A great dam is as necessary as a great sire to propagate speed. Bottom has a great dam and a great sire.

P. S.—A Postal Card will bring this catalogue.

D. A. MacKinnon, Druggist,

MEt.

Owner