

Central Guardian

ARENA—Third game City League, Bruins vs. Senators tonight. 642-2-25-11

MARSHFIELD FOR UNION—The result of the Church Union Vote was declared last evening as follows:—For Union, 43; Against Union, 40. Majority for Union, 3. The total vote was 84, one spoiled ballot.

TONIGHT BRUINS vs Senators Skating after game. Admission 26 cents. 642-2-25-11

SUMMERSIDE HIGH SCHOOL boys play West Kent at Arena Friday night. Skate afterwards. Only a quarter.—642-2-25-21

"POLLY PUT THE KETTLE ON" for all our friends are coming to the afternoon tea in Christian Church Hall tomorrow afternoon. 642-2-25-11

ISLAND REPRESENTATIVES—Mr. Nelson Rattenbury, who has been in Montreal, is to be learned, last night, going back to Ottawa, and with Mr. H. Shaw, will represent Prince Edward Island on the Maritime delegation which is to wait on the Federal Government.

CITY LEAGUE series third game Bruins vs. Senators Arena tonight. Skating after. Admission 26 cents. 642-2-25-11

AT HOME—Old fashioned eats, quaint and curious heirlooms at Christian Church at Home tomorrow afternoon. 643-2-25-11

ZION CHURCH VOTING—The hours of voting are as follows:—The poll will be open every Monday, Tuesday, Wednesday and Thursday from 7 to 8.30 p. m. and on Friday and Saturday from 1 to 3 p. m. each week, except on the closing day March 10th, when the hours will be from 3 to 5 p. m.

SEVENTEEN RACES, seventy contestants, West Kent. School Sports Arena Friday night. Admission 25 cents. 645-2-25-21

P. E. ISLANDER INJURED.—Four men were injured by the explosion of a dynamite charge in the tunnel of the Portland water district's new intake near Sebago, Portland, Maine Sunday. One, Arthur MacMillan of Prince Edward Island, is in a serious condition.

HAS BEEN TRANSFERRED.—W. A. MacDonald, for the past five years traveller for the firm of Getty and Scott, Ontario, for the province of Ontario, has received intimation that his territory will now be the Maritime Provinces including Sydney and Prince Edward Island together with Quebec.—Halifax Herald.

THE MARKETS.—There was a fair attendance at the market yesterday, the farmers reporting the roads in good condition for travelling, and the ice, though very smooth and glassy, also good. A cold yesterday at 70-73; potatoes, 20c; hay, 40-55c; straw, 40c; turnips, 15c; butter, 35-40c; eggs, 55c; chicken, 75-100.

TO GUARD NAME.—Theatres along the route of Capt. Plunkett's Dumbells Company—a route which begins next week in Vancouver and ends in St. John's, Newfoundland, on June 22—have been addressed by a Toronto legal firm warning them that any bills or advertising used for a rival organization employing the words "Dumbells" or "formerly the Dumbells" will be liable for damage.

NEW WILTSHIRE.—Miss Irene McLeod, Colville was among those attending the play "The Arrival of Kitty" in Bradalbane hall Feb. 18th.—Mrs. Roderic McKay, Bradalbane was a visitor to the city Friday.—Mr. J. W. McKenzie was at Bradalbane Feb. 18th attending the play put on by the Freeborn Dramatic Club.—Miss E. Frizzell, Rose Valley was a recent visitor to Bradalbane.—Mr. Ray Kennedy, Bradalbane has returned home from visiting friends in Springton.

BIRTHS BONNELL.—At St. John, N. B., on February 24th, 1925 to Rev. J. S. and Mrs. Bonnell a son, George Carruthers.

IN MEMORIAM

In memory of our beloved mother Mrs. Sarah Thorne, Died Feb. 25th 1924. We think of you as one who sleeps, All free from grief and pain, And that the happy day will come When we shall meet again. INSERTED BY THE FAMILY. 640

IN MEMORIAM

In sad but loving memory of our dear Mother, Mrs. S. M. MacWilliam, who departed this life February 25th, 1901. Dear is the grave where you are laid, Sweet is the memory that shall never fade, Forgotten by the world you may be, But dear to our memory you will ever be. INSERTED BY THE FAMILY.

ANNUAL MEETING

(Continued from Page 1.)

adequately take the place of the product of the cow in the human dietary. This knowledge is becoming more widely known and is largely responsible for the rapid expansion of the dairy industry.

In recent years we have been looking to the United States as a possible market for Canadian dairy produce. But it looks to us that the situation which has developed in that country during the last twelve months does not confirm that view. Conditions in that country are such that under the least encouragement production is increasing very rapidly. They are in a position to supply their own needs as the record of the past year shows. It is a matter of satisfaction to know that our annual importation of both butter and cheese have been growing less of late years. For instance in 1922 our importations were 6,078,882 lbs. In 1923 3,767,573 lbs. and in 1924 1,588,102 lbs. It is noted that the Western Provinces are now becoming large producers and exporters of dairy products. Today Saskatchewan butter is to be found on the markets of Great Britain, in the United States in Eastern Canada as well as Japan. In 1922 Canada exported only 7681 lbs. butter to Japan while in the year 1924 Japanese buyers bought 3,220,910 lbs. of Canadian butter. In referring to the world's trade in butter we note that Great Britain which imports more dairy produce than all the rest of the world combined imported in eleven months of the year 1924, 514,000,000 lbs. of butter, an increase of 1,000 over the same period in 1923.

With the accumulation of storage butter resulting largely from a greatly increased trade in Western Canada during the past season the competition and demand for higher and still higher quality becomes more insistent. And to hold our home market we must adopt a system of strict grading of both our raw and finished dairy products. All creamery butter should be sold on grade and a reciprocity of price quotations, if possible, established between this Province and our Maritime Competitors, who with us share in supplying our local trade. Price cutting may be avoided and we receive the full benefit of our home demand.

You will note by the statistics herewith submitted that we have made an increase in milk production over last year, and consequently an increased production per cow. Now I think it only fair to say that this is owing in part to the cow testing scheme which has been carried on by our dairymen more especially those who specialize in dairying activities. We trust that this important branch of the dairy industry will be carried on to a still greater extent in the years to come, so that the unprofitable cow might be eliminated. The production of our common and grade cows is not improving as our circumstances would warrant, nor in keeping with that of our pure bred herds. Competent men who have made a study of this question as to what profitable production cannot be secured by local trade, averaging lower than 6,000 lbs. Many of our best herds now greatly exceed this standard, indicating that the production of the tail enders must be unprofitably low. We have moderately priced land, and labor, fertile soil, temperate climate, a good dairy country and while the prices recently have not been in keeping with those the farmer in compelled to pay for his purchases, yet dairying has during the unsettled period of reconstruction paid its faithful followers more satisfactory returns than any other line of farming. We must however endeavor to increase our make. The percentage of production when it rises as the price falls and the only way we may contract this condition is by increased production per patron as well as per cow. double the quantity of product and many of our creameries would decrease the cost of manufacturing twenty five per cent. World wide indications point to better prices for farm products, the price of the staple food product, wheat, will in a short time be reflected in dairy and other live stock products. The countless millions of Asia are awakening to the appetizing and nourishing value of cereal and dairy foods. Let us prepare to meet this demand by endeavor to improve our quality, increase the quantity, standardize our dairy products and sell only on grade.

With the grading of our dairy products by the Dominion Department of Agriculture we are enabled more accurately to measure our progress in quality. Just here I would suggest that in future the secretaries of the different factories be required to tabulate their yearly report in such a manner that it would show the quantities of each grade of cheese or butter sold. There is now before us the problem of the relative value of No. 2 cheese compared with No. 1. It costs no more to make No. 1 cheese than No. 2 and it will bring many thousands of dollars more to the producer, while the consumer will be much more pleased if we are to meet the competition of the world we must do away with No. 2 cheese. We have also the problem of ill equipped factories. We require much more thorough inspection of our dairy factories. We hear that there is too great a tendency to deal leniently with such because the farmers in the vicinity of these factories would object strenuously if they were to be closed by the inspectors. If we are to hold our own we must bring all factories up to the standard of the best. We have also the problem of the careless maker who is turning out a product that is a menace to the fair name of Canada's dairy products. We require more thorough training of our makers before being given charge of a creamery or cheese factory. A maker should after serving the necessary apprenticeship receive a certificate of efficiency or license from a properly qualified dairy school. We have last but not least the indifferent factory patron who is even more of a menace to the reputation of Canadian cheese than the indifferent maker for his numbers are greater and he is found everywhere. We doubt if there is a factory in this Province or Canada that does not number among its patrons a number that are a detriment to the quality of that factory's product.

At the last meeting of our Association, a resolution was passed asking the incoming directorate to make every effort to formulate the best system possible to bring about a Central Organization for the purpose of marketing our dairy products as well as the purchasing of dairy supplies. A meeting of the directors was held on March 18th, at which the matter of the clearing house and storage plant for the whole Province was taken up. It was decided to get the opinion of Dr. Riddick, Dairy Commissioner, or that he would make it convenient to meet with the directors and discuss the matter with them in detail. Dr. Riddick was unable to attend, but had written to us giving us valuable information on the matter in question. A second meeting was held July 8th when it was decided to ask the co-operation of the Department of Agriculture to assist in a forward movement of the co-operative marketing of dairy products and the purchasing of dairy supplies. A committee was appointed to deal with the matter which will today submit to you certain recommendations for your consideration.

Many every member of this association has his utmost to make 1925 the best dairy year in the history of our industry.

COMPARATIVE STATEMENTS

Table with columns for Milk Supply 1923, Milk Supply 1924, Butter, and Value of Output. Includes sub-sections for Cheese and Butter.

Respectfully submitted, J. F. Profit, Secy. P. E. I. Dairymen's Association.

This report and that of our Auditor Mr. J. C. O'Brien, were on motion Mr. John Proudfoot, seconded by Mr. Chas. Stevenson adopted as read. The following committees were then appointed: Resolution Committee—Messrs. William Cain, W. J. Gibson and Wesley Keefe. Press Committee—Messrs. Rouben Macdonald and Peter Campbell.

The Secretary then read correspondence from Dr. Riddick of the Agricultural Department, Ottawa, re the establishment of a cold storage plant or central clearing house for cheese and butter at Emerald or Borden. Dr. Riddick in his letter pointed out that if the proposal involved only a temperature of 40-50°F. it would mean that ice refrigeration would be all that was necessary. If butter was to be stored, a temperature of 10° below zero would be required, and this meant mechanical refrigeration with proportionate cost. With this establishment in use prompt shipments could be made and every facility for grading would be offered. If used for meat and eggs, its use would not extend over the producing season, and that meant considerable overhead. It might, however, be used for storing potatoes during the winter.

General Quality of Cheese for the Season. The report of the grading of cheese for the past season shows that this is the only Province in Canada that did not show an increase in No. 1 Cheese. The defects were chiefly had flavors, such as NOT CLEAN, FRUITY, OFF FLAVOR? and RANCID. We had some complaints during the warm season of COARSE TEXTURE. This was due chiefly to taking over ripe and bad flavored milk, cooking high, and in some cases harsh treatment giving too much acid and not maturing sufficiently before salting. One of our largest cheese factories made 92 per cent. No. 1 cheese last season. This is a good average and goes to show No. 1 cheese can be made if we practice the proper methods.

The Future. Looking over the dairy situation as I see it from the many years I have been connected with it in this Province, I would say that in order to put it on a proper foundation we would need to have an improvement in our stables, better lighting and better ventilation. Let us consider for a moment what it would mean to us as a cheese producing Province if we had our live stock free from disease, or as we say a "Disease Free Area." Better breeding and feeding, a proper knowledge of the production per cow through the keeping of Dairy Records, a suitable place to keep milk and cream where temperature can be controlled, factory and plant kept in first class condition. Be sure that your factory is thoroughly capable of making No. 1 cheese and butter. The grading of cheese and butter and selling of grade points out where the defects are and gives those in charge of the work a chance to remedy the defects and raise the quality of our cheese and butter to the highest quality in Canada. Let each give the best service possible as this is our duty to the industry.

Respectfully yours, F. T. MORROW, Acting Inspector. This report was followed by a good deal of discussion which treated of the advantages and disadvantages of grading as it was affected by island conditions and therefore not always entirely satisfactory. Mr. Wilfred Boulter, Secretary of Agriculture, in reviewing the condition of the dairy industry in this Province, spoke of the effort that was being made to centralize it, getting the products together and making direct shipments. It had been found impossible to have direct winter shipments on the part of manufacturers and a central storage plant had not met with much approval from Dr. Riddick. However the question was one for the directors.

Another important question that had been found impossible to have direct winter shipments on the part of manufacturers and a central storage plant had not met with much approval from Dr. Riddick. However the question was one for the directors.

Another important question that had been found impossible to have direct winter shipments on the part of manufacturers and a central storage plant had not met with much approval from Dr. Riddick. However the question was one for the directors.

Another important question that had been found impossible to have direct winter shipments on the part of manufacturers and a central storage plant had not met with much approval from Dr. Riddick. However the question was one for the directors.

Another important question that had been found impossible to have direct winter shipments on the part of manufacturers and a central storage plant had not met with much approval from Dr. Riddick. However the question was one for the directors.

Another important question that had been found impossible to have direct winter shipments on the part of manufacturers and a central storage plant had not met with much approval from Dr. Riddick. However the question was one for the directors.

Another important question that had been found impossible to have direct winter shipments on the part of manufacturers and a central storage plant had not met with much approval from Dr. Riddick. However the question was one for the directors.

Another important question that had been found impossible to have direct winter shipments on the part of manufacturers and a central storage plant had not met with much approval from Dr. Riddick. However the question was one for the directors.

Another important question that had been found impossible to have direct winter shipments on the part of manufacturers and a central storage plant had not met with much approval from Dr. Riddick. However the question was one for the directors.

Another important question that had been found impossible to have direct winter shipments on the part of manufacturers and a central storage plant had not met with much approval from Dr. Riddick. However the question was one for the directors.

Another important question that had been found impossible to have direct winter shipments on the part of manufacturers and a central storage plant had not met with much approval from Dr. Riddick. However the question was one for the directors.

Another important question that had been found impossible to have direct winter shipments on the part of manufacturers and a central storage plant had not met with much approval from Dr. Riddick. However the question was one for the directors.

Another important question that had been found impossible to have direct winter shipments on the part of manufacturers and a central storage plant had not met with much approval from Dr. Riddick. However the question was one for the directors.

Another important question that had been found impossible to have direct winter shipments on the part of manufacturers and a central storage plant had not met with much approval from Dr. Riddick. However the question was one for the directors.

Another important question that had been found impossible to have direct winter shipments on the part of manufacturers and a central storage plant had not met with much approval from Dr. Riddick. However the question was one for the directors.

Another important question that had been found impossible to have direct winter shipments on the part of manufacturers and a central storage plant had not met with much approval from Dr. Riddick. However the question was one for the directors.

Another important question that had been found impossible to have direct winter shipments on the part of manufacturers and a central storage plant had not met with much approval from Dr. Riddick. However the question was one for the directors.

Another important question that had been found impossible to have direct winter shipments on the part of manufacturers and a central storage plant had not met with much approval from Dr. Riddick. However the question was one for the directors.

Another important question that had been found impossible to have direct winter shipments on the part of manufacturers and a central storage plant had not met with much approval from Dr. Riddick. However the question was one for the directors.

Another important question that had been found impossible to have direct winter shipments on the part of manufacturers and a central storage plant had not met with much approval from Dr. Riddick. However the question was one for the directors.

Another important question that had been found impossible to have direct winter shipments on the part of manufacturers and a central storage plant had not met with much approval from Dr. Riddick. However the question was one for the directors.

Another important question that had been found impossible to have direct winter shipments on the part of manufacturers and a central storage plant had not met with much approval from Dr. Riddick. However the question was one for the directors.

Another important question that had been found impossible to have direct winter shipments on the part of manufacturers and a central storage plant had not met with much approval from Dr. Riddick. However the question was one for the directors.

Another important question that had been found impossible to have direct winter shipments on the part of manufacturers and a central storage plant had not met with much approval from Dr. Riddick. However the question was one for the directors.

Another important question that had been found impossible to have direct winter shipments on the part of manufacturers and a central storage plant had not met with much approval from Dr. Riddick. However the question was one for the directors.

Another important question that had been found impossible to have direct winter shipments on the part of manufacturers and a central storage plant had not met with much approval from Dr. Riddick. However the question was one for the directors.

Another important question that had been found impossible to have direct winter shipments on the part of manufacturers and a central storage plant had not met with much approval from Dr. Riddick. However the question was one for the directors.

Another important question that had been found impossible to have direct winter shipments on the part of manufacturers and a central storage plant had not met with much approval from Dr. Riddick. However the question was one for the directors.

Another important question that had been found impossible to have direct winter shipments on the part of manufacturers and a central storage plant had not met with much approval from Dr. Riddick. However the question was one for the directors.

Another important question that had been found impossible to have direct winter shipments on the part of manufacturers and a central storage plant had not met with much approval from Dr. Riddick. However the question was one for the directors.

Another important question that had been found impossible to have direct winter shipments on the part of manufacturers and a central storage plant had not met with much approval from Dr. Riddick. However the question was one for the directors.

Another important question that had been found impossible to have direct winter shipments on the part of manufacturers and a central storage plant had not met with much approval from Dr. Riddick. However the question was one for the directors.

Another important question that had been found impossible to have direct winter shipments on the part of manufacturers and a central storage plant had not met with much approval from Dr. Riddick. However the question was one for the directors.

Another important question that had been found impossible to have direct winter shipments on the part of manufacturers and a central storage plant had not met with much approval from Dr. Riddick. However the question was one for the directors.

Another important question that had been found impossible to have direct winter shipments on the part of manufacturers and a central storage plant had not met with much approval from Dr. Riddick. However the question was one for the directors.

Another important question that had been found impossible to have direct winter shipments on the part of manufacturers and a central storage plant had not met with much approval from Dr. Riddick. However the question was one for the directors.

Another important question that had been found impossible to have direct winter shipments on the part of manufacturers and a central storage plant had not met with much approval from Dr. Riddick. However the question was one for the directors.

Another important question that had been found impossible to have direct winter shipments on the part of manufacturers and a central storage plant had not met with much approval from Dr. Riddick. However the question was one for the directors.

Another important question that had been found impossible to have direct winter shipments on the part of manufacturers and a central storage plant had not met with much approval from Dr. Riddick. However the question was one for the directors.

Another important question that had been found impossible to have direct winter shipments on the part of manufacturers and a central storage plant had not met with much approval from Dr. Riddick. However the question was one for the directors.

Another important question that had been found impossible to have direct winter shipments on the part of manufacturers and a central storage plant had not met with much approval from Dr. Riddick. However the question was one for the directors.

Another important question that had been found impossible to have direct winter shipments on the part of manufacturers and a central storage plant had not met with much approval from Dr. Riddick. However the question was one for the directors.

Another important question that had been found impossible to have direct winter shipments on the part of manufacturers and a central storage plant had not met with much approval from Dr. Riddick. However the question was one for the directors.

Another important question that had been found impossible to have direct winter shipments on the part of manufacturers and a central storage plant had not met with much approval from Dr. Riddick. However the question was one for the directors.

Another important question that had been found impossible to have direct winter shipments on the part of manufacturers and a central storage plant had not met with much approval from Dr. Riddick. However the question was one for the directors.

Another important question that had been found impossible to have direct winter shipments on the part of manufacturers and a central storage plant had not met with much approval from Dr. Riddick. However the question was one for the directors.

Another important question that had been found impossible to have direct winter shipments on the part of manufacturers and a central storage plant had not met with much approval from Dr. Riddick. However the question was one for the directors.

Another important question that had been found impossible to have direct winter shipments on the part of manufacturers and a central storage plant had not met with much approval from Dr. Riddick. However the question was one for the directors.

Another important question that had been found impossible to have direct winter shipments on the part of manufacturers and a central storage plant had not met with much approval from Dr. Riddick. However the question was one for the directors.

Another important question that had been found impossible to have direct winter shipments on the part of manufacturers and a central storage plant had not met with much approval from Dr. Riddick. However the question was one for the directors.

Another important question that had been found impossible to have direct winter shipments on the part of manufacturers and a central storage plant had not met with much approval from Dr. Riddick. However the question was one for the directors.

Another important question that had been found impossible to have direct winter shipments on the part of manufacturers and a central storage plant had not met with much approval from Dr. Riddick. However the question was one for the directors.

Another important question that had been found impossible to have direct winter shipments on the part of manufacturers and a central storage plant had not met with much approval from Dr. Riddick. However the question was one for the directors.

Another important question that had been found impossible to have direct winter shipments on the part of manufacturers and a central storage plant had not met with much approval from Dr. Riddick. However the question was one for the directors.

Another important question that had been found impossible to have direct winter shipments on the part of manufacturers and a central storage plant had not met with much approval from Dr. Riddick. However the question was one for the directors.

Another important question that had been found impossible to have direct winter shipments on the part of manufacturers and a central storage plant had not met with much approval from Dr. Riddick. However the question was one for the directors.

Another important question that had been found impossible to have direct winter shipments on the part of manufacturers and a central storage plant had not met with much approval from Dr. Riddick. However the question was one for the directors.

Another important question that had been found impossible to have direct winter shipments on the part of manufacturers and a central storage plant had not met with much approval from Dr. Riddick. However the question was one for the directors.

Another important question that had been found impossible to have direct winter shipments on the part of manufacturers and a central storage plant had not met with much approval from Dr. Riddick. However the question was one for the directors.

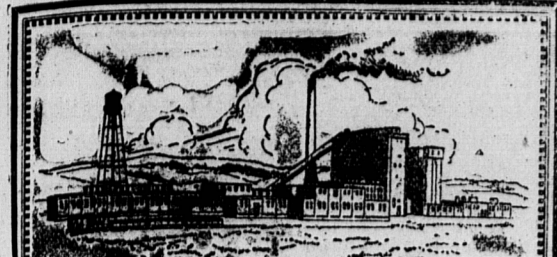
Another important question that had been found impossible to have direct winter shipments on the part of manufacturers and a central storage plant had not met with much approval from Dr. Riddick. However the question was one for the directors.

Another important question that had been found impossible to have direct winter shipments on the part of manufacturers and a central storage plant had not met with much approval from Dr. Riddick. However the question was one for the directors.

Another important question that had been found impossible to have direct winter shipments on the part of manufacturers and a central storage plant had not met with much approval from Dr. Riddick. However the question was one for the directors.

Another important question that had been found impossible to have direct winter shipments on the part of manufacturers and a central storage plant had not met with much approval from Dr. Riddick. However the question was one for the directors.

Another important question that had been found impossible to have direct winter shipments on the part of manufacturers and a central storage plant had not met with much approval from Dr. Riddick. However the question was one for the directors.



Fraser Companies

The securities of Fraser Companies are well known throughout Canada. Their wide distribution, ready market and general dependability have placed them in the top rank of industrials.

We are offering an issue of 7% Cumulative Redeemable Convertible Preferred Stock at

97 1/2 and accrued dividend, yielding 7.18%

That return, coupled with safeguards beyond the ordinary and an interesting conversion privilege, warrants your sending for details if you are seeking an attractive investment.

Write for full particulars.

Royal Securities Corporation

132 1/2 Great George Street, Charlottetown Montreal Toronto Halifax St. John Winnipeg Vancouver

PERSONALS

Miss Jean Allan left yesterday morning for Montreal where she will undergo hospital treatment.

Mr. Wm. Cain, New Perth was a visitor to the city yesterday.

Mr. Jas. McEachern, Mt. Ryan was in the city yesterday on business.

Mr. J. R. McWilliams, Belfast, was a passenger to the city on the Murray Harbor train yesterday.

Mr. R. McCallum, Dunstaffnage was a visitor to the city yesterday.

Mr. Angus M. MacLeod, City, was a passenger to Souris yesterday afternoon.

Miss Mildred Cooper of the Prince of Wales College is spending three weeks vacation at her home in Murray Harbor.

Mr. and Mrs. Michael Kilfoy wish to thank their neighbors and many friends who so kindly assisted them in their recent sad bereavement. 638-2-25-11.

CLASSIFIED ADVERTISEMENTS

One insertion 10c per line of 5 words Four insertions 35c per line of 5 words Eight insertions 70c per line of 5 words

For Sale

HAY FOR SALE—EIGHT STACKS Byrne Bros., North River. 602-2-24-21

FOR SALE—QUANTITY OF small potatoes, excellent feed. E. Foster, Marshfield.—608-2-24-41

FOR SALE—REGISTERED JERSEY Bull 2-1-3 yrs. old, first prize winner every year shown, W. H. Horne, Milton. 496-2-18-61

FOR SALE—AT LONG CREEK stock, implements and household furniture, on Thursday, March 5th. T. Henderson. 634-2-25-51

FOR SALE—TWO TOULOUSE fenders, will exchange ganders, or buy two geese. Hector MacKay, Desable. 603-2-24-41

FOR SALE—NEW FISHING boats all sizes and designs with or without engines for particular write P. A. Rooney, boat builder, Souris. 627-2-25-101

Teachers Wanted FEMALE TEACHER WANTED—For Stanley School, first or second class, \$125.00 Supplement, R. J. Anderson, Sec'y. Stanley Bridge. 591-2-23-31

WANTED—YOUNG WOMEN to train as nurses. At least one year. High School required. Monthly allowance of \$12 to \$14 with maintenance, uniforms and text books. School is accredited and offers excellent course. Advantage of training in new building equipped entirely up to date. Please make application for classes entering March 1st or September 1. Head tax will be paid if students remain. Address Besse Eiter, Principal, Training School for Nurses, the Meriden Hospital, Meriden, Conn. 560-2-21-71

Female Help Wanted WANTED—GOOD HOUSEKEEPER for small family for April and May. Must furnish good reference. Write care of Box 116, Guardian. 630-2-25-51

Lost LOST—ON SATURDAY BLACK leather pocket book containing sum of money. Finder report at Guardian Office. Reward. 595-2-23-31

Wanted PORTRAIT AGENTS—WRITE for catalogue, United Art Ltd., Brunswick Ave., Toronto. 899-1-12Mw61

WANTED—TO RENT, SMALL furnished house, or three to four furnished rooms, centrally located. Phone 191. 637-2-25-21

Queen Hotel Water Street, Charlottetown

This popular Hotel has been completely renovated and offers very comfortable accommodation to the traveling public. The table is especially good and the public are courteous-careed for. Rates \$3.00 a day.

Charlottetown Hotel Co., Ltd.

Proprietors QUEEN HOTEL

Monrell, J. J. Blakely, J. W. Heath, Miss L. A. McNeil, Miss R. E. Green, Miss Jean Gay, Miss Marion Laird, Miss Marg. Gaudet, Miss Fausta McCullough, Miss Patricia McLellan, Miss A. Saunders, Miss Cornelia White, Miss Etta Gay, Miss A. Green, Mr. and Mrs. F. L. Mac

Monrell, J. J. Blakely, J. W. Heath, Miss L. A. McNeil, Miss R. E. Green, Miss Jean Gay, Miss Marion Laird, Miss Marg. Gaudet, Miss Fausta McCullough, Miss Patricia McLellan, Miss A. Saunders, Miss Cornelia White, Miss Etta Gay, Miss A. Green, Mr. and Mrs. F. L. Mac

TOOTH BRUSH SALE -19 cts - Gives you your choice from a large assortment of brushes ranging in prices from 25c to 50c. FREE SAMPLE of Tooth Paste with each brush. MAIL ORDERS receive special attention. SEE OUR WINDOW The Hughes Drug Co., Ltd. CHARLOTTETOWN

Monrell, J. J. Blakely, J. W. Heath, Miss L. A. McNeil, Miss R. E. Green, Miss Jean Gay, Miss Marion Laird, Miss Marg. Gaudet, Miss Fausta McCullough, Miss Patricia McLellan, Miss A. Saunders, Miss Cornelia White, Miss Etta Gay, Miss A. Green, Mr