

Offers For Sale

Offers will be received for the purchase of the large store and warehouse, etc., situated on the South side of Vernon River Bridge...

Farm For Sale

That desirable and well known farm situated about half mile from Cardigan the shipping centre and one of the best produce markets in P. E. Island.

For particulars apply to T. E. Bulpitt, Cardigan or to the owner HORACE PARKER, Dickenson

SUMMERVILLE RACES

SATURDAY AUGUST 23RD PURSE \$200 PURSE Free-for-all trot and pace purse \$100 2:40 trot ...

FARM LABORERS

Excursions, August 11th and 18th, 1919

The Canadian National Railway will run two Excursions on dates given above. Fare from Summerside or Charlottetown to Winnipeg \$16.80.

Sale of Properties In Charlottetown

To be sold by Public Auction on Monday, the 15th day of September, A.D. 1919, at 12 o'clock noon on the premises, if not previously disposed of by private sale.

SCHOOL OF AVIATION

Do you want to learn to Fly? Aviators receiving big pay. We have the latest government type planes, all our equipment the very best.

DEVERE AVIATION SCHOOL

Truro, N. S.

LEMON JUICE FOR FRECKLES

Girls! Make beauty lotion for a few cents—Try it!

Squeeze the Juice of two lemons into a bottle containing three ounces of orchard white, shake well, and you have a quart of the best freckle and tan lotion, and complexion beautifier, at very, very small cost.

Horse Races at Garfield, BELFAST AUGUST 16th, 1919

There will be three classes namely: 2:35 Trot and Pace, purse \$40.00. 3 Minute Trot and Pace, purse \$40.00. Green Race Mixed, purse \$40.00.

Canadian National Railways

2 Farm Laborers 2 EXCURSIONS TO WINNIPEG

Table with 2 columns: Destination and Fare. Includes Tignish, Alberton, Ploverfield, O'Leary, Port Hill, Summerside, Kensington, Emerald Jet, North Wiltshire, Bradalbane, Elmira, Bear River, St. Peters, Mount Stewart, Georgetown, Montague, Murray Harbor, Vernon, Charlottetown, Borden.

FARM LABORERS Excursions

August 11th and 18th. Fares from Charlottetown: \$16.60 GOING, \$22.60 RETURNING.

CANADIAN PACIFIC

FARM LABORERS Excursions

AUGUST 11th AND 18th

FARES FROM CHARLOTTE TOWN: \$16.60 GOING, \$22.60 RETURNING.

Rates from other points made by adding lowest regular rates up to St. John going and returning.

H. M. DAVISON

Local Agent N. R. DesBRISAY, District Passenger Agent

WILSON'S FLY PADS

Kill them all, and the germs too. 10c a packet at Druggists, Grocers and General Stores.

Field Crop Competition

The competition in fields of standing grain which has been carried on by the Department of Agriculture for the past number of years is to be conducted again for this season on a system similar to last year.

Objects.

- 1. To stimulate an interest in the production of pure, clean seed of the best varieties of our farm crops. 2. To encourage and assist those who are engaged in growing seed grain...

Competitions.

Three competitions will be held in each county, in each of which the following cash prizes will be offered: Oats—1, \$10; 2, \$9; 3, \$8; 4, \$7; 5, \$6.50; 6, \$6; 7, \$5.50; 8, \$5; 9, \$4.50; 10, \$4; 11, \$3.50; 12, \$3; 13, \$2.50; 14, \$2.

Rules and Regulations.

- 1. A field of oats shall consist of at least five acres; of wheat, three acres; and of barley at least two acres. 2. An entry fee of one dollar will be charged, if only one kind or grain is entered, and an additional fee of fifty cents for each additional kind of grain.

SANDRA THE JEALOUS By Jane Phelps

AN UNEXPECTED LUNCH PARTY CHAPTER XXXVI

Barrett Edmonds had been gone but a very few minutes when Everett came in. I started to tell him Barrett had been calling, but before I had even mentioned his name Everett said: "Don't keep me talking, Sandra. I have to catch a train. Send Richard to me at once."

FOR SALE

Desirable farm at St. Peter's Harbor, 105 acres; \$5 acres cleared, with good buildings, well watered and all muzzel matted. Will be sold with or without crop. Apply ALBERT McEWEN, Bristol, P. O., Rural Route 180-8-11Mwfr5pfd.

ANNUAL SHOOTING MATCHES

of the Prince Edward Island Rifle Association will be held at Charlottetown Ranges Thursday and Friday, August 21st and 22nd, commencing at 8 a. m. New time. One hour before the start of each match will be given up to practise shooting.

Peace Celebration Races

In connection with the Peace Celebration, the following classes will be put on by the Charlottetown Driving Club on August 19: Class A—Trot and Pace. Class B—Trot and Pace. Class C—Trot and Pace.

Peace Celebration List of Events

The list of events on the Abegweit grounds during the Peace Celebration are: 100 yards Dash. 100 yards (Boys under 16.) 400 yards (Boys under 16.) 1 mile Run. 120 yards Hurdles. Quarter Mile Bicycle. Half Mile Bicycle. Two Mile Lap Race. High Jump. Broad Jump. Pole Vault.

NOTICE!

Returned Discharged Soldiers

Table with 2 columns: DISTRICT and NAME. Lists names of discharged soldiers from various districts like Tignish, Alberton, O'Leary, Tyne Valley, Summerside, Kensington, Hunter River, Crapaud, Mount Stewart, Vernon River, Montague, St. Peters, Souris.

said as he sat down. "I saw you coming in, and would have spoken of my desire then, but I thought one of my husbands might appear on the scene and scalp anyone who had the temerity to usurp their places."

To Be Continued

The falsest philosophy ever perpetrated is that old one of "spare the rod and spoil the child." If you want to build a boy into a man, teach him the things that make a man and every ounce of bullying within the feeling of a boy is just that much taken out of him as he grows into manhood.

FOR SALE

Desirable farm at St. Peter's Harbor, 105 acres; \$5 acres cleared, with good buildings, well watered and all muzzel matted. Will be sold with or without crop. Apply ALBERT McEWEN, Bristol, P. O., Rural Route 180-8-11Mwfr5pfd.

ANNUAL SHOOTING MATCHES

of the Prince Edward Island Rifle Association will be held at Charlottetown Ranges Thursday and Friday, August 21st and 22nd, commencing at 8 a. m. New time. One hour before the start of each match will be given up to practise shooting.

Peace Celebration Races

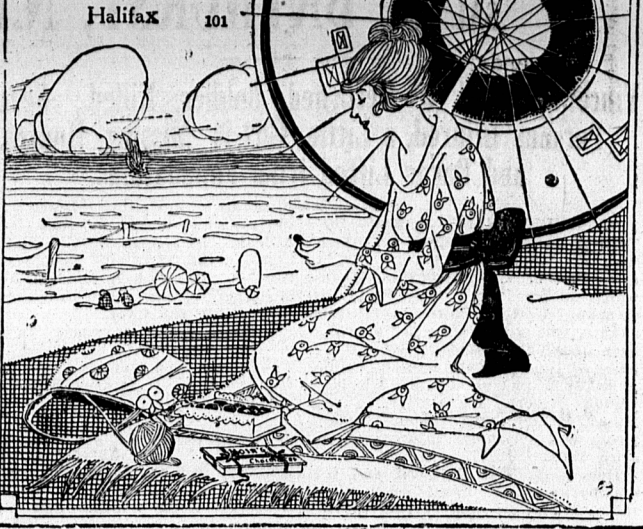
In connection with the Peace Celebration, the following classes will be put on by the Charlottetown Driving Club on August 19: Class A—Trot and Pace. Class B—Trot and Pace. Class C—Trot and Pace.

Peace Celebration List of Events

The list of events on the Abegweit grounds during the Peace Celebration are: 100 yards Dash. 100 yards (Boys under 16.) 400 yards (Boys under 16.) 1 mile Run. 120 yards Hurdles. Quarter Mile Bicycle. Half Mile Bicycle. Two Mile Lap Race. High Jump. Broad Jump. Pole Vault.

MOIR'S Chocolates

With their smooth, thick coating and centres of creams, nutmeats and jellies, make the holiday a real joy.



EARM FOR SALE Fox Breeders' Association

I offer for sale my farm containing 100 acres, 70 acres clear the rest covered with hard and soft wood, 2 good springs on farm, all new buildings convenient to churches and school and shipping, will sell with crop all in high state of cultivation, for particulars apply on premises to KENTFORD K. SCOTT, Madaw Bank, West River via Cornwall. 7490-8-6Mwfr3pfd.

CANADIAN NATIONAL RAILWAY PRINCE EDWARD ISLAND

Time Table in Effect, June 2nd, 1919 ATLANTIC STANDARD TIME

Complex time table with multiple columns for train names, directions, and times. Includes sections for Trains Outward, Trains Inward, and specific routes like Charlottetown to Alberton and Summerside.

EASTERN STEAMSHIP LINES, INC.

RESUMPTION OF FREIGHT AND PASSENGER SERVICE ST. JOHN AND BOSTON

Steamship "CALVIN AUSTIN" will leave St. John every WEDNESDAY at 9 a. m., and every SATURDAY at 6 p. m. (Atlantic time.) The Wednesday trips are via Eastport and Lubec, due Boston 10 a. m. Thursdays. The Saturday trips are direct to Boston, due there Sundays, 1 p. m. FARE \$9.00. STATEROOMS \$2.00 up.

S. S. Service Between Picton N.S. and Eastern Ports of P.E.I. for Season of 1919 Via S. S. Harland

MONDAY—Leaves Montague, P.E.I. 7 a. m., Lower Montague 7.45 a. m. Georgetown 8.15 a. m., Murray River 11 a. m., Murray Harbor North 12 o'clock arriving at Picton, N. S. about 4 p. m. WEDNESDAY and Saturday—Leaves Picton on arrival of noon train from Halifax calling at Beach Pt., Georgetown, arriving at Montague 5.30 p. m. THURSDAY—Leaves Montague at 8 a. m. calling at intermediate ports on way to Cardigan returning to Georgetown same evening and remaining over night. FRIDAY—Leaves Georgetown at 6.30 a. m., Murray Harbor South 8.30 a. m. arriving at Picton 1 p. m. Run by Daylight Saving time. For further particulars write, wire, or phone to WILLIAM MCLURE, Picton, N. S. 582-6-22MCL