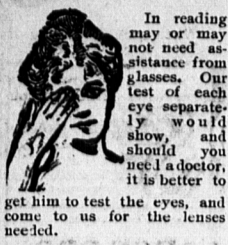


Eyes That Give you Discomfort



E. W. Taylor Jeweller, South Side Queen Square.

Notice to Students Intending to Commence the Study of Medicine.

The Medical Council of this Province desires to draw the attention of all students who intend to commence or who are now studying medicine to the clauses in the Medical Act...

Chas. F. Davison

Funeral Director and Embalmer

Office and showrooms, Prince St., opposite Baptist Church. Residence, foot of Prince St.

Dominion Atlantic Railway.

The popular Fast Line between Eastern Nova Scotia and Halifax.

The Royal Mail Steamships "Prince George" and "Boston"

The Fastest and Finest Steamers plying between the Maritime Provinces and Boston.

PROFESSIONAL CARDS

W. A. O. MORSON, K. C., C. GAVAN DUFF. Barristers and Attorneys.

SMALLWOOD, C. R. Barrister and Attorney at Law, Notary Public, etc.

Arthur J. B. Mellish, B.A. (HARVARD.) BARRISTER AND ATTORNEY-AT-LAW.

E. O. BROWN Barrister, Solicitor, Notary Public, &c.

JOHN A. MATHIESON, K. C. JENAS A. MACDONALD. Mathieson & Macdonald BARRISTERS, SOLICITORS.

MUMFORD BROS Produce Commission Merchants. MUMFORD'S BUILDING, ARGYLE ST., HALIFAX, N. S.

R. JOHN LEDWELL, M.D. Physician and Surgeon. POWELL STREET, Opposite St. Joseph's Convent.

E. B. WILLIAMS, Barrister, Solicitor and Notary. AFTER JANUARY 2ND, OFFICE—HOLMAN BUILDING.

GEORGE S. INMAN Barrister, Solicitor, Notary, etc. Money to loan. Collections made.

A. A. McLEAD, K. C. Donald McKinnon McLEAD & MCKINNON, Barristers, Attorneys-at-Law.

Eastern Steamship Co International Division

Commencing July 3, 1905, steamers leave St. John at a.m. (Atlantic Standard) on Mondays, Wednesdays and Fridays for Lunenburg, Eastport, Portland and Boston.

RETURNING

From Boston, via Portland, Eastport and Lunenburg, Mondays, Wednesdays and Fridays at 9 a.m.

S. S. AMELIA

Commencing 1st July will leave Charlottetown every alternate Saturday for Pictou, Souris, Cheticamp, Sydney, St. Pierre and Placentia, Nfld, taking freight and passengers.

Carvell Bros. AGENTS.

Commencing June 5th, "OCEAN LIMITED" via INTERCOLONIAL RAILWAY will leave HALIFAX 8:00 a.m. (daily except Sunday).

WEDDING RINGS

Our Wedding Rings stamped W. N. T. are made to our special order and are guaranteed full quality as represented by stamp inside.

PLANT LINE

The Direct Water Route From PRINCE EDWARD ISLAND TO BOSTON

W. N. TANTON JEWELER, Sunnyside.

Gasoline Engines Marine, Stationary and Portable in all sizes from 1 1/2 to 50 H. P.

CANADIAN PACIFIC Canada's National Exhibition TORONTO Aug. 26 to Sept. 14 EXCURSION FARES

Canada's National Exhibition TORONTO Aug. 26 to Sept. 14 EXCURSION FARES

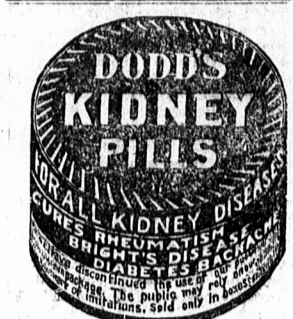
Canada's National Exhibition TORONTO Aug. 26 to Sept. 14 EXCURSION FARES

Canada's National Exhibition TORONTO Aug. 26 to Sept. 14 EXCURSION FARES

Canada's National Exhibition TORONTO Aug. 26 to Sept. 14 EXCURSION FARES

CALENDAR FOR SEPT., 1905.

Calendar table for September 1905 showing days of the week, moon phases, and high/low water.



St. Peter's School FOR BOYS AND GIRLS.

Reopens Sept. 7. Daily Session from 9 a.m. to 1 p.m.

Head Master Senior Department—William T. Suckling, B. A. (King's) Honorary graduate Ontario Business College, Belleville, Ontario's Professional Certificate, Nova Scotia.

Head Mistress Junior Department—Miss R. M. DesBray.

Information and references given on application to the Rev. James Simpson, or to Mr. Suckling, Box 1016, Charlottetown.

Our Wedding Rings stamped W. N. T. are made to our special order and are guaranteed full quality as represented by stamp inside.

W. N. TANTON JEWELER, Sunnyside.

Gasoline Engines Marine, Stationary and Portable in all sizes from 1 1/2 to 50 H. P.

Canada's National Exhibition TORONTO Aug. 26 to Sept. 14 EXCURSION FARES

Canada's National Exhibition TORONTO Aug. 26 to Sept. 14 EXCURSION FARES

Canada's National Exhibition TORONTO Aug. 26 to Sept. 14 EXCURSION FARES

Canada's National Exhibition TORONTO Aug. 26 to Sept. 14 EXCURSION FARES

Canada's National Exhibition TORONTO Aug. 26 to Sept. 14 EXCURSION FARES

P. E. ISLAND LOCAL MARKETS.

Table of market prices for various goods like barley, beef, butter, etc.

Table of market prices for various goods like herring, mutton, potatoes, etc.

CHARLOTTETOWN MARKETS. Corrected every Tuesday and Friday.

Beef (quarter) per lb. 0.06 to 0.09. Beef (small) per lb. 0.08 to 0.12.

Beef (small) per lb. 0.08 to 0.12. Mutton per carcass. 0.06 to 0.08.

Beef (small) per lb. 0.08 to 0.12. Mutton per carcass. 0.06 to 0.08.

Beef (small) per lb. 0.08 to 0.12. Mutton per carcass. 0.06 to 0.08.

Beef (small) per lb. 0.08 to 0.12. Mutton per carcass. 0.06 to 0.08.

Beef (small) per lb. 0.08 to 0.12. Mutton per carcass. 0.06 to 0.08.

Beef (small) per lb. 0.08 to 0.12. Mutton per carcass. 0.06 to 0.08.

Beef (small) per lb. 0.08 to 0.12. Mutton per carcass. 0.06 to 0.08.

Beef (small) per lb. 0.08 to 0.12. Mutton per carcass. 0.06 to 0.08.

Beef (small) per lb. 0.08 to 0.12. Mutton per carcass. 0.06 to 0.08.

Beef (small) per lb. 0.08 to 0.12. Mutton per carcass. 0.06 to 0.08.

Beef (small) per lb. 0.08 to 0.12. Mutton per carcass. 0.06 to 0.08.

INTEREST ON YOUR MONEY PLUS LIFE INSURANCE

"Guaranteed Compound Interest Gold Bond" guarantees Savings Bank Interest on premium deposits, in addition to life insurance.

EDDY'S "SILENT" PARLOR MATCH

If held tightly, Then rubbed lightly, And struck rightly, Will BURN BRIGHTLY.

SCHOFIELD BROS., Selling Agents, St. John, N. B.



S. W. CRABBE, Hardware, Paints and Oils.

City of Ghent.

From Halifax every Tuesday morning; from Charlottetown, every Thursday. Calls at Hawkesbury, Arichat, Isaac's Harbor, Sheet Harbor, Salmon River, Canso, Summerside.

Biliousness CURED QUICKLY and PERMANENTLY By Using R & G PILLS.

THEY CLARIFY THE SKIN, PURIFY THE BLOOD and REGULATE THE BOWELS By Cleansing All Disorders from the System.

TEA SETS! See our excellent values in China and Semi-porcelain Sets, from \$2.50 up to \$15.00.

CANADIAN CROCKERY CO., SUNNY-SIDE.

The Charlottetown Steam Navigation Co., Ltd

From Point Du Chene, on arrival of train leaving St. John at 10 a.m. for SUMMERSIDE, connecting there with express train for Charlottetown and Pictou.

P. E. I. RAILWAY

Table of train schedules for the P.E.I. Railway, including train numbers, stations, and times.

Trains are run by Atlantic Steamship Time, D. FORTINGER, L. J. JONES, Gen. Mgr., Can. Govt. Ry., Moncton, N. B.

ARTIFICIAL TEETH

The best of satisfaction, moderate prices. Extraction free of charge at DR. J. P. MURRAY

N. S. & N. B. HOTELS KING EDWARD HOTEL

Opposite I.C.R. Depot, Halifax. Fitted with all modern improvements, magnificently furnished. Situation and view unsurpassed in Halifax.

HOTEL AMERICAN MONCTON, N. B.

Refurnished up-to-date. New management. Grill open till 23 o'clock. Sample rooms for commercial travellers.

HOTEL BRUNSWICK MONCTON, N. B.

The Largest and Best Located Hotel in the City. Accommodating 250 guests situated in the centre of business district.

ROCKY POINT FERRY.

The steamer "ELFIN" will ply between Prince St. Ferry, Wharf, and Rocky Point daily for the season as follows:

Cape Breton Ads

ROSS & ROSS, Barristers, Solicitors and Notaries. G. L. MURPHY & CO. SYDNEY, C. B.