

THE CHARLOTTETOWN GUARDIAN

MORNING Edition - Goes into Over 3000 Homes...

CHARLOTTETOWN, PRINCE EDWARD ISLAND, CANADA, SATURDAY, AUGUST 11, 1906.

35 CENTS PER MONTH SINGLE COPY TWO CENTS

12 PAGES - Wonderful Results to all Advertisers.

DAILY FOUNDED 1858 WEEKLY (NOW TRI-WEEKLY) 1887

Devoted to the Literature, History, Folk-lore and best interests of the Province of Prince Edward Island.

THE MAGAZINE GUARDIAN

Succeeding the PRINCE EDWARD ISLAND MAGAZINE Issued Every Saturday Morning.

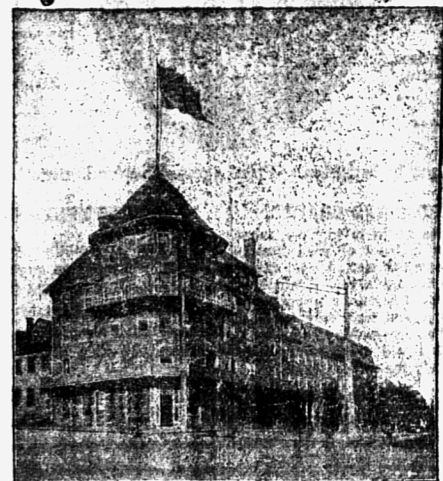


JAMES HEDLEY BREHAUT.

GUERNSEY, whence our ancestors emigrated to Prince Edward Island, is the second in size and importance of the Channel Islands, lying between England and France. It is nine miles long, its greatest breadth six miles, circumference 31 miles, acreage 14,000, and its population in 1881, 32,659. It is said to be the most densely populated place in Europe. These islands at the Norman Conquest in 1066 were a part of Normandy, and from that time until the reign of Henry the Second were alternately English and Norman, since which period their allegiance has been to the British Crown. Guernsey is said to have been given a constitution by King John, and it has complete self-government. The climate of Guernsey is very fine, and of late years the principal industry has been the raising of vegetables for the English markets. The island might be termed one huge hothouse. In our ancestors' time, however, the main reliance of the inhabitants was the wine business. Wines were brought from France and Spain in large casks and after ripening were transferred to smaller measures and shipped to points in Great Britain and elsewhere. The cause of the decline of the wine industry in Guernsey, and the consequent emigration of many of the inhabitants, among them our ancestors, is best told in the following extract from Barbet's Guernsey Guide, printed in 1842: "During the whole of the 18th century trade had considerably increased, as independently of privateering and the vast supply of brandy and tobacco to British smugglers, a considerable traffic arose from the island being, previous to the introduction of the bonding system in England, a place of deposit for wines and other foreign goods, to be afterwards legally shipped to Great Britain. The large and excellent vaults, reckoned to be one of the best in Europe, the climate of Guernsey, which was favorable for the ripening of wines, and the proximity of the island of Great Britain rendered it extremely advantageous to the British merchant as a depot by saving him a large outlay in the payment of duties levied on importations during war. The bonding system procuring him afterwards every facility of a depot at home, with the advantage of having his merchandise under his own eyes, Guernsey was of course soon deprived of a most lucrative branch of its commerce. "In 1805 the trade in spirits and tobacco, which English smugglers purchased here rather than at Roscoff or other French ports, was placed under such restrictions as, with the assistance of the local authorities, very shortly prevented any illicit commerce with the Mother Country. So extensively had the trade been carried on that in Guernsey alone there were in 1805 no less than 600 coopers employed in making small casks. The charge of smuggling so often brought against the islanders must have been founded on ignorance or prejudice. The smuggling was not carried on by natives, but by English men—these came to the island, brought their boats into the harbor or roadstead, purchased spirits from

BREHAUT A Sketch Historical And Otherwise--By J. Hedley Brehaut, Roxbury, Mass.

garet, Joseph and Charlotte—were born in Murray Harbor. A History of Guernsey, by William Berry, 1815, says that in 1598, Peter Brehaut was appointed a jurat; in 1637, John Brehaut; in 1648, Peter Brehaut, and in 1661, John Brehaut, of Porteval. It also gives an account of the deposing of John Brehaut and Pierre Brehaut as jurats on Monday, Aug. 29, 1653, and their subsequent restoration, referred to by Mr. Lee, in Barbet's Guernsey Guide. 1842. Mention is made of the residence of Mrs. Brehaut, called Richmond House, as one of the fine residences of Guernsey. Henry Brehaut's father, he who married Elizabeth Brehaut in 1762, was a captain and owned a vessel that plied between Southampton and Guernsey, called by the natives a Southampton trader. There is a tradition that he died while comparatively a young man and while his vessel was on a trip. Let us hope that he always interviewed the customs officers when landing cargoes of wine and tobacco in England. Henry Brehaut was married in 1791, to Elizabeth Pullman, of English parentage. It has previously been the belief of the writers that she was a native of Guernsey, but in view of Mr. Lee's statement that the marriage did not take place in St. Peter's Port it seems open to doubt, or perhaps they were married elsewhere on the island, Elizabeth in her youth learned dressmaking and millinery and later clerked in Vardon's store. She was very well educated as was her husband, and had attended dancing school in her youth. In 1807 the late Thomas Brehaut of the White Sands was the possessor of a silver cream pitcher marked with the initials "E. P." which was an engagement present from Henry to Elizabeth. Thomas was the oldest grandchild and the pitcher was given to him by his grandmother when he was a little boy. Henry was a cooper, as were the majority of the able-bodied men of Guernsey, and he had frequently worked at his trade in the vineyards of France and Spain. When the business began to decline at the beginning of the 19th century he and a number of his neighbors decided to emigrate to the New World, and Prince Edward Island was the place selected. With their families and all their belongings they set sail, probably from Southampton, early in the year 1806, their vessel being conveyed by a man-of-war owing to the war between England and France. It is said that Henry's capital when he left Guernsey was 300 guineas. No doubt many of his descendants would be pleased to be able to lay their hands on a similar sum today. John T. Mellish in his History of Methodism in Charlottetown, P. E. I., says that in May, 1806, seventy-three men, women and children arrived in Charlottetown from Guernsey. The diary of Benjamin Chappel, the first postmaster at Charlottetown, has the following entries in 1806: "May 15—Arrived this afternoon the ship from Guernsey. "June 3—The Guernsey people go to Murray Harbor—eight families of them." Seven of the eight families were the Brehauts, LeLacheurs, Robertsons, Tandvins, Machons, Marquands and DeJersys. Another family on the ship was Henry Brehaut's sister Elizabeth and her husband, Captain Fallow, who settled at Bay Fortune. And now a glance at Murray Harbor as it was when our ancestors settled here one hundred years ago. The first census of Prince Edward Island, taken in 1798 by order of his Excellency Governor Fan-



The "VICTORIA" CHARLOTTETOWN.

The VICTORIA

It used to be said, some years ago "The greatest need of Charlottetown is a first class hotel." The remark is never heard now.

Because the need has been supplied. It is perhaps not generally known how great was the need of this good hotel—how poor a reputation had been fastened upon Charlottetown in this regard, previous to the time R. H. Sterns opened the present Hotel Victoria, an event which marked a new era in Charlottetown's history—at any rate from the standpoint of the tourist and regular traveller. The casual reader must bear in mind that the proprietor of the Victoria has practically made a new building of the former establishment which he purchased. The additions and alterations, the renovations and improvements have entailed a lot of expense, for every convenience of the modern hotel has been installed. The proprietor has stopped short of nothing at reason required to place the hotel in a position to cater to the most fastidious patronage, and merit the good name it has acquired, and although it has seemed as if the volume of travel coming this way has hardly warranted such lavish outlay, yet the present season has brought much traffic, and there is little doubt but that travel to the island will increase year by year. One factor in the looked for increase will be the fact that the hotel stands ready to afford accommodation beyond reproach, and surely everyone interested in the Province, will, with the Guardian heartily wish the Victoria the highest measure of success. Here is what a regular guide book of the Dominion has to say of this island and incidentally of the hotel:— "How well named this beautiful island—'The Garden of the Gulf'—only those who visit it and explore the varied charms encompassed by its shores can appreciate. Not to the sojourner in her cities and towns, however, will the manifold beauties of this garden island be revealed. No one should, nor of course would, miss thoroughly 'doing' Charlottetown; the capital and seat of government, and Summerside, a close second in commercial importance; but to see the country in all its pastoral, sylvan beauty, one must leave the towns and beaten track and go into the bye-ways. You can get to P. E. I. either by way of Point du Chene, N. B. to Summerside (coming from the west) or from Pictou, N. S., to Charlottetown (coming from Boston and the east). The fine steamers of the Charlottetown Steam Navigation Company make close connections with trains of the I. C. R. at Point du Chene and Pictou, for Summerside and Charlottetown respectively. The trip across the Northumberland Straits is an enjoyable part of the journey, a pleasant change from the railway. It is 35 miles from Point du Chene to Summerside; 50 miles from Pictou to Charlottetown. Charlottetown the capital and commercial centre of the island, is a beautiful city of 12,000 inhabitants, with clean, wide streets, fine public buildings, parks, churches, well-stocked retail exporiums, and important wholesale and exporting houses. The hotels are conducted on a liberal scale and in a first-class manner, equal to any in much larger centres. The Victoria is the premier hotel of the city. It has lately been partly rebuilt, redecorated, and the most modern improvements added, bringing it into the ranks of most cosmopolitan hostleries. It is a credit to any city in point of appearance and general management. The table is generally provided with all the luxuries of the various seasons, such luxuries as are obtained in few places outside of Prince

De PROFUNDIS.

Out of the Deep, O loving Lord, These depths of loneliness, Of self despised and life abandoned, I send my choking cry abroad In bitterest distress. The casual reader must bear in mind that the proprietor of the Victoria has practically made a new building of the former establishment which he purchased. The additions and alterations, the renovations and improvements have entailed a lot of expense, for every convenience of the modern hotel has been installed. The proprietor has stopped short of nothing at reason required to place the hotel in a position to cater to the most fastidious patronage, and merit the good name it has acquired, and although it has seemed as if the volume of travel coming this way has hardly warranted such lavish outlay, yet the present season has brought much traffic, and there is little doubt but that travel to the island will increase year by year. One factor in the looked for increase will be the fact that the hotel stands ready to afford accommodation beyond reproach, and surely everyone interested in the Province, will, with the Guardian heartily wish the Victoria the highest measure of success. Here is what a regular guide book of the Dominion has to say of this island and incidentally of the hotel:— "How well named this beautiful island—'The Garden of the Gulf'—only those who visit it and explore the varied charms encompassed by its shores can appreciate. Not to the sojourner in her cities and towns, however, will the manifold beauties of this garden island be revealed. No one should, nor of course would, miss thoroughly 'doing' Charlottetown; the capital and seat of government, and Summerside, a close second in commercial importance; but to see the country in all its pastoral, sylvan beauty, one must leave the towns and beaten track and go into the bye-ways. You can get to P. E. I. either by way of Point du Chene, N. B. to Summerside (coming from the west) or from Pictou, N. S., to Charlottetown (coming from Boston and the east). The fine steamers of the Charlottetown Steam Navigation Company make close connections with trains of the I. C. R. at Point du Chene and Pictou, for Summerside and Charlottetown respectively. The trip across the Northumberland Straits is an enjoyable part of the journey, a pleasant change from the railway. It is 35 miles from Point du Chene to Summerside; 50 miles from Pictou to Charlottetown. Charlottetown the capital and commercial centre of the island, is a beautiful city of 12,000 inhabitants, with clean, wide streets, fine public buildings, parks, churches, well-stocked retail exporiums, and important wholesale and exporting houses. The hotels are conducted on a liberal scale and in a first-class manner, equal to any in much larger centres. The Victoria is the premier hotel of the city. It has lately been partly rebuilt, redecorated, and the most modern improvements added, bringing it into the ranks of most cosmopolitan hostleries. It is a credit to any city in point of appearance and general management. The table is generally provided with all the luxuries of the various seasons, such luxuries as are obtained in few places outside of Prince



INTERIOR VIEWS OF THE "VICTORIA"