



BEFORE 1947 COMPETITIONS

School - Improvement

SCORING BASIS

| | |
|--|-----------|
| 1. Exterior Repairs | 75 points |
| Exterior Painting | 100 " |
| 2. Planting and care of trees and hedges..... | 50 " |
| 3. Playgrounds, including levelling, seeding, and provision of adequate space..... | 100 " |
| 4. Sanitation (outbuildings only) | 75 " |
| Fences | 50 " |
| 5. School Sign Boards | 25 " |
| 6. Flag Pole and Flag | 25 " |
| Total | 500 " |

Rules Of Competition

- Entries close May 8th. Mail entries promptly, using form provided in this advertisement.
- Judging: (a) Initial judging will begin May 10th. (b) Final judging will begin Sept. 1, 1947. (c) Contestants must abide by the decision of the judges which shall be final.
- Entrance Fee shall be \$1.00 and must accompany all applications.
- All work done or partially done during the Spring of 1948 prior to initial judging will be noted by the judges and full credit given thereto.
- Planting of Native Trees will receive the same consideration as imported ornamentals.
- A special reduction of 20% on Nursery Stock is available to contestants by arrangement with the McConeil Nursery Co., Port Burwell, Ont., but such stock must be ordered through the Secretary of this Society.
- All Trophies are for Annual Competition only, but miniature cups will be in each case retained by the winners.
- Both Home and School Competitions are open only to those situated outside the limits of any City or Incorporated Town in Prince Edward Island.
- For the purpose of this Competition only Improvement to existing structures Homes or Schools shall be scored.
- Homes shall include all barns and outbuildings on property.

Special Rules

Eligibility Homes 1st Year:—Homes which have not been previously entered or if participating last year's Competition did not obtain over 40 points according to judges' reports
 Homes 2nd Year:—All Homes entered in last year's Competition and which obtained more than 40 points.
 Final classification of Homes will be made by the Secretary of this Society.
 Schools:—All Rural Schools are eligible regardless of whether or not they were entered in 1947 Competition.

Spray Painting

As a public service this Society has arranged with the Northumberland Spray Painting Co. for the sending of one of their most up-to-date spray painting units to the Island. This will serve both Urban and Rural residents but should be of particular value to contestants wishing to do exterior painting jobs at greatly reduced cost.
 The above Company will be advised by the Secretary of this Society of all entrants interested in this work as soon as entry forms received indicate the desire for this service.

INFORMATION AVAILABLE TO CONTESTANTS

A pamphlet entitled "Beautifying the Home Grounds", which contains valuable information on Rural Home Beautification, also an appendix prepared by the Dominion Experimental Farm, Charlottetown, listing trees, shrubs, flowers, etc., especially suitable to this Province, will be mailed automatically to all Contestants.
 In addition a list of available publications on above subject will be provided on request.

IMPORTANT

This will be the only publication of this Advertisement. Please cut out and save for future guidance.

HOME AND SCHOOL IMPROVEMENT COMPETITIONS

SPONSORED BY

P. E. I. Rural Beautification Society

\$1500 -- CASH PRIZES -- \$1500

OFFICERS

Hon. Pres.—His Honour Lt.-Governor J. A. Bernard.
 President.—Lt.-Col. E. W. Johnstone, Kensington.
 Vice-Pres.—Mr. P. W. Turner, Charlottetown.
 Secretary-Treasurer—E. D. Reid, Charlottetown, Box 218.
 Directors—Maj. J. A. MacDonald, Cardigan.
 Mr. Donald-A. MacDonald, M.B.E., Glenfinnan.
 Mr. Jas. A. MacGregor, Central Lot 16.
 Mr. E. S. Burleigh, Ellerslie.

JUDGES:—

KING'S—Mr. Walter L. Beer, Roseneath.
 QUEEN'S—Mr. J. Harry Brown, Kensington.
 PRINCE—Mr. Ralph Monkley, Miscouche.
 PROVINCIAL—Mr. Gordon C. Warren, Dominion Experimental Farm, Charlottetown.

INTRODUCTION

The Rural Beautification Competitions so popular in 1947 are being continued this year with the exception that the Community Hall Competitions have been eliminated. Once again the emphasis is on improvement. It should be noted that those with farm property in a low state of repair have the best opportunity to gain a high standing in the Competition.
 The cash prizes for Schools have been eliminated due to the fact that generous grants are given to Schools by the Provincial Government for School Improvement projects. It is the desire of the Society that districts or communities co-operate in an endeavor to have a large number of contestants. It is expected that Women's Institutes will take the initiative in this respect. Generous special prizes are offered to Communities.



HOME — MR. AND MRS. EARLE R. HOGG, WILMOT VALLEY

The above shows the home of Mr. and Mrs. Earle R. Hogg, winner of Lt.-Governor J. A. Bernard's Trophy for the most Improved Home in the Province in 1947 Competition. They also hold Hon. Thane A. Campbell Trophy emblematic of Prince County Championship.

— PRIZE LISTS —

HOME IMPROVEMENT — First Year

| KINGS CO. | | QUEEN'S CO. | | PRINCE CO. | |
|-----------------|-------------|-----------------|-------------|---------------------|--|
| 1st prize | \$75.00 | 1st prize | \$75.00 | Prizes | |
| 2nd prize | \$60.00 | 2nd prize | \$60.00 | Same Number | |
| 3rd prize | \$40.00 | 3rd prize | \$40.00 | And Value | |
| 4th-6th | \$25.00 ea. | 4th-8th | \$25.00 ea. | As for King's | |
| 7th-9th | \$15.00 ea. | 9th-14th | \$15.00 ea. | | |
| 10th-15th | \$10.00 ea. | 15th-23rd | \$10.00 ea. | | |

HOME IMPROVEMENT — Second Year

| KING'S CO. | | QUEEN'S CO. | | PRINCE CO. | |
|-----------------|------|---------------|--|---------------|--|
| 1st prize | \$40 | Same As | | Same As | |
| 2nd prize | \$30 | For | | For | |
| 3rd prize | \$20 | King's | | King's | |
| 4th prize | \$10 | | | | |

SCHOOL IMPROVEMENT COMPETITION

KING'S CO.—Most Improvement in Schools entered in King's Co. R. T. Holman Trophy
 QUEEN'S CO.—Most Improvement in Schools entered in Queen's Co. R. T. Holman Trophy
 PRINCE CO.—Most Improvement in Schools entered in Prince Co. R. T. Holman Trophy

The above Trophies will be held by winning Schools for one year only.

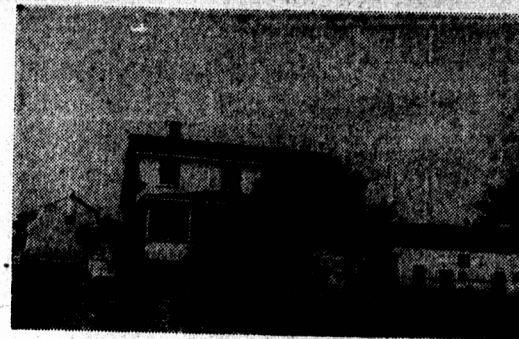
— ENTRY FORM —

RURAL BEAUTIFICATION COMPETITIONS — 1948

- Name of Contestant (or School)
- Address
- School District
- County
- Enter in Home Competition 1st year (2nd year) — (strike out inapplicable words)
- If School name sponsoring body, Women's Institute, etc.
- Eligible for Special Prizes Nos. (Use numbers used in Special Prize List in this advertisement).
- Interested in Power Spray Painting of Buildings
- Fee enclosed one dollar

CUT OUT this Entry Form — COMPLETE FULLY and mail to:—

E. D. REID,
 Secretary P. E. I. Rural Beautification Society
 Box 218, Charlottetown.



AFTER 1947 COMPETITIONS

Home Improvement

1st and 2nd YEAR COMPETITION

| | |
|--|-----------|
| 1. Repairs to, or replacement of buildings, painting, and white washing | 90 points |
| 2. Planting trees, hedges and shrubs, etc. | 75 " |
| 3. Removal of irreparable buildings, dead trees, weeds and rubbish | 50 " |
| 4. Tidiness | 50 " |
| 5. Fences around buildings | 25 " |
| 6. Lawns | 25 " |
| 7. Flowers | 50 " |
| 8. General Improvement in appearance | 60 " |
| 9. Improvement in approach to Home, including improvement to gateway, care of mailbox, provision of sign post, fences along lane leading to Home | 50 " |
| 10. General Improvement farm frontage main road, including planting trees, removal weeds, rubbish, etc., and care of fences | 25 " |
| Total | 500 " |

Special Prizes

HOME IMPROVEMENT — 1948:

- Winners 1st year Competition Homes King's Co.—Silver Cup donated by Senator J. A. MacDonald Cardigan.
- Winner 1st year Competition Homes Queen's—Silver Cup donated by Lt.-Col. E. W. Johnstone, Kensington.
- Winner 1st year Competition Homes Prince—Silver Cup donated by Hof. Thane A. Campbell.
- Most Improved Home in P. E.—Silver Cup donated by His Honour Lt.-Governor J. A. Bernard.
- TRAVEL BUREAU PRIZES:
 - Buildings:—For outstanding improvement in painting and repair buildings in each County.—Prize—Travel Tickets to Value \$40.
 - Trees and Shrubs:—Greatest achievement in the planting of Trees and Shrubs about Farm Homes in each County.—Prize—Travel Ticket to Value \$25.

- G. E. FULL PRIZES:—Highest point winner in Homes Competition in 2nd Queens north of C. N. R. Lines—1st, \$25; 2nd, \$15; 3rd, \$10.
- COL. E. W. JOHNSTONE PRIZE:—Flower Gardens—Col. Johnstone offers 1 dozen silver teaspoons (Community Plate) to the Schoolgirl in the School districts of Long River, French River, Irishtown, Seaview and Springbrook producing the best flower garden in 1948. Selection, arrangement and care of flowers shall be considered in judging.

NOTE:—Flower gardens as above must be entered by Schoolgirl but parents may also receive full credit for the same garden if Home is entered in Competition.

- FLOWER GARDEN PRIZE:—A Special Prize Collection Dahlias (18 varieties) is offered by the Dominion Experimental Farm, Charlottetown, to the best flower garden among entrants in each County.
- TIBBETS PAINT CO. PRIZE:—The Tibbets Paint Co., Trenton, N. S., offers a Special Prize of 5 gallons paint (exterior) to the contestant Home Competition in each County showing greatest improvement in repair of farm buildings.
- OUTSTANDING HOME PRIZES:—Special trophies are offered for the outstanding Home (including all buildings) at the time of final judging in each County. This prize will not be based on improvement made in 1948.

Donors of Trophies are:—

KING'S—To be announced.
 QUEEN'S..... Mr. P. W. Turner, Charlottetown
 PRINCE..... Mr. Geo. Brookins, Kensington

PATTERSON'S JEWELLERY STORE RESIDENCE PRIZE:—Offered by Patterson's Jewellery Store, Charlottetown, to the contestant in Queen's Co. showing the greatest improvement in the appearance of the Residence only.
 Prize—Chest Silverware

COMMUNITY PRIZES:—To be presented the School District in each County gaining the greatest number of points in Home and School Improvement.

Donors of prizes for each County are:—

Kings: \$25.00—H. F. MacPhee, Charlottetown.
 QUEEN'S—\$50—Garden City Dairy, Charlottetown.
 PRINCE—\$50—Simmons & MacFarlane, Summerside.

VETERANS' FARMS:—Special Prizes are offered to Veterans of Second World War who are settled on their own farms, with donors as follows:

KING'S—To be announced.
 QUEEN'S:—Henderson & Cadmore, Charlottetown. Prize—Gasoline Coat.
 PRINCE..... Island Equipment, E. Side: 1st \$20; 2nd \$20

NOTE:—This project has approval of local Veterans' Land Act officials.
 R. L. COTTON PRIZE:—Mr. R. L. Cotton offers a Special Prize to the contestant in each County showing the greatest improvement in the care of the frontage of his farm on the highway.

PRIZES ARE EACH COUNTY AS FOLLOWS

1st \$15; 2nd \$10

Additional \$10 to the Best among the Three Counties
 SPECIAL CONTRIBUTION—PHOTOGRAPHIC SERVICES

The following Studios have agreed to Photograph the prize winners in each County free of charge:

KING'S..... Garaham Photo Studio, Charlottetown
 QUEEN'S..... Craswell Studio, Charlottetown
 PRINCE..... Meyers Studio, Charlottetown