

Meet Me at the Always Busy Store

OUR ANNUAL SALE of WHITEWEAR



We have proved by long experience that the nicest and prettiest goods are amongst the very latest samples shown to us. That's the reason why our white wear sale has been left until you really need the goods. We have succeeded, owing to several fortunate purchases, in making this sale the leading opportunity to buy your whitewear at very low prices.



LADIES' DRAWERS

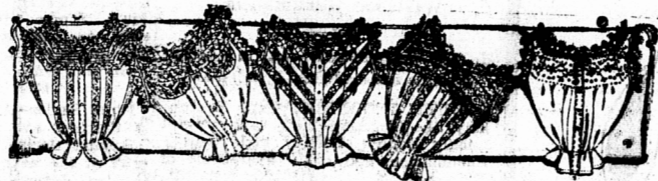
22c Fine English cotton, wide hem-pair stitched hem either open or closed.

30c Same quality of English cotton wide pair frill with large hemstitched tucks.

40c Good quality of English cambric deep frill with a band of insertion above hem.

60c English longcloth a wide frill o pair lawn with clusters of tucks.

O S Extra large and full for stout people in a number of different styles from 80 to \$1.65 a pair.



CORSET COVERS

25c Made of fine medium weight English cotton. Trimmed with torchon lace and insertion. French style.

45c Made of excellent quality English cambric. Trimmed with embroidery on neck and sleeves. Fitted style.

55c French style. English longcloth, torchon lace and insertion trimmed on neck, sleeves, and front.

75c French style. Made of fine Irish Nainsook. yoke of torchon insertion, lace, beading and ribbon on neck and sleeves

LADIES' NIGHT DRESSES

65c English cotton tucked yoke. Lace ea. trimming on neck and sleeves.

90c Fine medium cotton made with a low neck and short sleeves. Fine Embroidery forming the trimming on neck and sleeves.

\$1.00 Fine English long cloth yoke, formed of wide tucks. Insertion plait. ea. Hemstitched frilling on neck, sleeves and plait.

\$1.35 Kimmona style, low neck and short sleeves. Trimmed around neck and sleeves with wide Torchon insertion.

O S Sizes from \$1.00 to 2.25 ea. Also Empire, Princess and other makes.



Test by Real Comparison

Is more often to the point than comparison of prices and qualities that may be printed in different newspaper advertisements from day to day.

STANLEY BROS

Court such comparison at all times.

Ladies Underskirts.

65c A skirt of good weight cotton, made fairly full, wide hemstitched frill

95c A splendid skirt, cut good and full out of a special grade of cotton. Good width frill trimmed with large hemstitched tuck.

\$1.20 An extra special skirt cut very full ea. and has a round yoke, wide torchon lace and insertion frill on the flounce.

\$1.50 Skirts of English Longcloth. Deep ea. frill of embroidery trimmed with clusters of fine tucks. Round Yoke. Dust ruffle.

Petticoats 65c, 95c, \$1.25, Fine Qualities \$3, \$4, \$5 ea



Mail Order Department

The mail order department of this store is under the personal management of one of the firm. People outside this city need have no hesitation whatever about ordering goods required from us as we never substitute one article for another.

Dress Goods Dept

White Goods

Lustres 38c, 42c, 60c.
Fancy Lustre 38 in 30c.
Batiste 48", 55c, 60c.
Panama 42 in 48c.
Fancy Serge 42 in 45c.
Estamine 40 46 in 70c.
Herringbone 44 in 75c.
Heavy Herringbone 43 in 80c.
Heavy Estamine 46 in 90c.
Blanketing 52 in 85c.

Glove Dept

White Gloves

Wrist length Lisle 6 1/2 to 8 1/4 20c
Wrist length Lisle 6 1/2 to 8 1/4 2 domes 35c.
18 in Lisle 6 to 7 1/2 25c.
18 in Lisle 6 1-2 to 7 1-2 42c.
18 in All Silk 6 1-2 to 8 65c.
White Chamois 6 1-4 to 6 3-4 wash 85c.
White Glace Kid 2 domes \$1.10.

Hosiery Dept.

White Hosiery

Cotton sizes 9 to 9 1-2, 10 25c.
Finest Lisle 9 to 9 1-2 35c.
Egyptian Lisle Full Lace 9 to 9 1-2 60c.

Children's

Cotton 6, 6 1-2, 7 20c.
Lisle 6, 6 1-2 7 35c.
Lisle 7 1-2, 8, 8 1-2 40c.
Sox 4, 4 1-2, 5, 5 1-2 15c.

Belt and Frilling Dept.

White Belts

Elastic Belts 25c, 65c
Silk 35c, 65c
Wash Embroidered 10c, 15c, 25c
Wash Braided 35c
Elastic by the yard 65c yd

White Frillings

Six yards muslin in box 30c box
Net, one and two ply 12c, 16c, 20c yd
Chiffon 16c, 20c, 25c yd

Staple Dept.

Best Linen Satin Damask Unbleached

Flower Scrolls 28c
Dice 38c
Polka Dot 60c

Bleached 72 inch Conventional Scrolls 95c, \$1.05, \$1.15
Fleurde Lis \$1.25
Shamrock and Rose \$1.35
Satin Stripe, Rose \$1.65

STANLEY BROS.
132 Richmond St

The Always Busy Store

STANLEY BROS.
132 Richmond St