

USED ROUND THE WORLD

# Baker's Cocoa and Chocolate



46 Highest Awards in Europe and America

Made by a scientific blending of the best Cocoa beans grown in the tropics—the result of 126 years of successful endeavor.

WALTER BAKER & CO. LTD. DORCHESTER, MASS. BRANCH HOUSE 86 St. Peter St., Montreal, Can.



—the Brand of Excellence.

Just two kinds of soap—the genuine made from the finest vegetable oils and flower perfumes—and the imitations made from chemical perfumes and chemically bleached animal fats, to resemble, as much as possible in appearance, the genuine

## "Baby's Own" Soap

Absolutely no expense is spared to make "Baby's Own" as good a soap as can be made, yet it costs you no more than the inferior imitation.

## Dr. Slocum's Great Tonic and Disease Destroyer PSYCHINE

(PRONOUNCED SI-KEEN)

Used in Thousands of Homes in Canada

THOSE WHO don't know what Psychine is and what it does are asking about it. THOSE WHO do know what Psychine is and what it does are using it. They regard it as their best physician and friend.

- COUGHS, LA GRIPPE, Colds, Pneumonia, Bronchitis, Catarrh, Weak Voice, Sleeplessness, Nervousness, Malaria, Anæmia,
- Bronchial Coughs, Chills and Fever, Difficult Breathing, General Weakness, Female Troubles, Fickle Appetite, Hemorrhages, Night Sweats, Consumption, Catarrh of the Stomach.

All these diseases are serious in themselves, and if not promptly cured in the early stages are the certain forerunners of Consumption in its most terrible form. Psychine conquers and cures Consumption, but it is much easier and safer to prevent its development by using Psychine. Here is a sample of thousands of voluntary and uncollected statements from all over Canada:

# THE GUARDIAN'S HOME CIRCLE

## Gowns of Cloth or Velvet. By Dorothy Dale

For luncheon, bridge parties, teas and such daytime functions and for the theater, or informal evening affairs, dressy gowns of cloth or velvet are the accepted thing. The new apricot shade is very smart and is very becoming to most dark haired or auburn haired women. In New York a great many street suits of light-colored cloth are worn. The plainly tailored coats and plaited skirts are charming in these soft colorings. One pretty little suit of this kind, was of lavender broadcloth. The coat was made single breasted with curved fronts, extended to just a little below the hips, was semi-fitting and had a plain notched revers collar. The skirt was fitted, the plait being stitched down six inches or so below the hips. The hat accompanying the costume was of black color felt with the brim tilted up on the left side. The trimming consisted of three lavender plumes and lavender mauls. An ermine tie and mitt were also worn.

Velvet suits are much liked and are usually made with trimmings of ermine. The elbow or three-quarter length sleeve is usually seen in these velvet suits.

The illustrations show two very attractive frocks which would not be difficult to copy, the figure with the plumed hat showing a frock of pink cloth.

The skirt of the model was made with a plaited panel in the middle of the front, back and sides, and there was a slight sweep all around.

The bodice was made with an under blouse of net and lace, the cloth forming wide bretelle pieces over the shoulders. The sleeves had cloth sections outlined by a row of the tiny button lace, over the inner blouse sleeves of ruffled lace. The girde could be either of folded velvet or of the cloth.

The second figure shows a costume of violet broadcloth. The bodice of this



frock was almost entirely of tucked cream figured net. The high, draped girde was of the moire and was fastened on the left side of the front under two cut-steel buckles. The skirt was cut with an attached flounce, which was in one with the front breadth.

DOROTHY DALE.

## Beverages and Miscellaneous Recipes.

BY SARA CRANFORD.

Fudge.—This is a chaffing confection but can be made over the stove as well.

Take four cupsful of granulated sugar, one cupful of rich milk, one-quarter of a pound of butter, one-half a cake of Baker's chocolate, grated. Put all together over a hot fire, stirring constantly, and when it begins to thicken place the pan in another full of hot water and cook until it is easily formed into a ball when dropped into cold water; it must not be hard or brittle, however. Remove from the fire at this stage and stir until the mass begins to set. Pour into a pan to the depth of half an inch and mark off in squares. The fudge may be sprinkled with almost any kind of nuts, American walnuts being especially delicious.

Devil's Food.—Wet a half cupful of grated chocolate with a gill of milk, then beat into the mixture a half cupful of brown sugar. Turn into a saucepan and boil stirring all the time to prevent scorching until like thick cream. Set aside to cool. Cream a half cupful of butter and a cupful of brown sugar, add two beaten eggs, two-thirds of a cupful of sweet milk and two small teaspoonfuls of vanilla. Blend thoroughly, then beat in the foiled preparation, and, last of all, fold in a pint of flour that has been sifted with a heaping tablespoonful of baking powder.

Almond Loaf Cake.—Rub very smooth enough almond paste to make a small cupful. Cream together a quarter of a pound of butter and a pound of powdered sugar, and when very light beat in the well-whipped yolks of eight eggs. Beat in gradually the almond paste, and when this is well blended fold in the stiffened whites of the eggs alternately with one quart of prepared and sifted flour. Last of all, stir in a half teaspoonful of essence of bitter almonds. Bake in a loaf tin in a steady oven, covering the cake or the first 20 minutes it is in the oven. When

done and cooled, turn it out and cover with a white icing flavored with a very few drops of almond extract. Place blanched and halved almonds on top of the cake before the icing hardens.

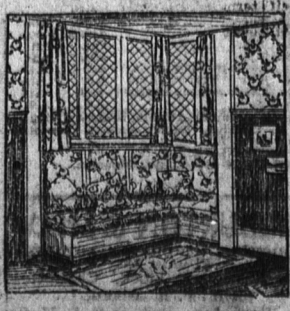
SARA CRANFORD.

## The Bedroom and its Furnishings. By Beatrice Carey

One of the first considerations in furnishing a bedroom is the treatment of the walls and floors.

A bedroom need not be large. Twelve by 14 feet makes a fair-sized room and is in good proportion. Most of the attractiveness of a bedroom depends upon the position of the windows. If the room is quite small the best effect is gained by having one large window, with three divisions, in preference to two or smaller ones.

In the illustration shown a pretty corner window treatment is given. The woodwork of the room was in white enamel, the lower part of the walls being done in plain surface old rose paper, the



and gray-green leaves. The furniture was mostly of mahogany, the bed being of brass.

The windows had tiny lattice panes, the cushioned window seat built in about the corner window being covered with cretonne matching the wall paper, the curtains being of the same cretonne. There were also inner curtains of very thin ruffled net.

These window seats add much to the coziness of a room. In many of the new houses, a great deal of the new furniture such as window seats, clothes closets or chests of drawers are often built in the walls of the house, and same idea being carried out in the dining-room

and library especially. If a bedroom has a chimney piece or fireplace which juts out into the room, the shallow recess on each side can be utilized for building in the wall, on the side a clothes closet, and on the other a chest of drawers with shelves above.

Mirrors treated as fixed wall spaces and set in flush with the surface of the walls add much to a room and are also most useful. Where a room has plenty of sunlight, a light blue wallpaper may be selected, the woodwork being in cream-white, draperies or cream-colored net in cretonne cushions and hangings of pale blue and white, or cream color, pink and blue.

There are a few general rules as to the correct relation of color values which should always be adhered to. The ceiling should be light, the side walls about two shades darker and the floor covering several tones darker than the walls.

This idea of having the furniture done in white enamel is an excellent one to follow in "doing over" an old bedroom set, which may often be completely transformed by covering the cheap stained wood with a few coats of white paint and enamel.

Bird's-eye maple is very dainty and attractive for a bedroom, but nothing is so handsome as mahogany. Wooden beds, although some very beautiful ones can be had are not considered so hygienic as those of brass or enameled iron and brass.

If you purchase a desk, select one with a very solid base, so that it will really be a practical writing table. There should always be a little low table beside the bed to hold one's water pitcher at night, a candlestick and match-holder and a book or two. The chairs should mostly be rather low and of the wide, comfortable sort. There should be at least one large rocker or lounging chair.

BEATRICE CAREY

## Could Not Speak Above a Whisper.

COLD IN THE CHEST SEEMED TO BE UNMOVABLE, BUT CURE WAS SOON AFFECTED BY

## DR. CHASE'S SYRUP OF LINSEED AND TURPENTINE

It is waste of time to use the ordinary cough mixture for serious colds on the chest, and time is of infinite value when the lungs are in danger.

The risk is too great, especially when you want to think that Dr. Chase's Syrup of Linseed and Turpentine is for sale in nearly every store that keeps medicines at all.

This letter gives you some idea of the effectiveness of this great medicine. Mrs. A. Barnum Ingersoll, Ont., writes:—"My husband had a very severe cold on his chest and got so bad he could not speak above a whisper. The cough medicines he tried seemed to have no effect and reading about Dr. Chase's Syrup of Linseed and Turpentine I sent for a bottle. In two days he was cured and very grateful for such a medicine. He says he will never be without this medicine in the house."

The very name of Dr. Chase's Syrup of Linseed and Turpentine is sufficient to explain the simple and yet powerful and well-known ingredient, of which this great medicine is composed.

While linseed sheathes the mouth, tongue and throat with a protective coating to prevent injury from hard coughing, turpentine disinfects and stimulates the ulcerated parts of the bronchial tubes and lungs and is almost specific for bronchitis.

Other ingredients, which along with these go to make up Dr. Chase's Syrup of Linseed and Turpentine, soothe the nerves, loosen the cough, and expectoration, and by thorough action on the whole system completely cure coughs and colds, bronchitis, asthma, whooping cough, and sore throat.

Dr. Chase's Syrup of Linseed and Turpentine, 25 cents a bottle, at all dealers, or Edmondson, Bates & Co., Toronto. To protect you against imitations, the portrait and signature of Dr. A. W. Chase, the famous receipt book author, are on every bottle.

The Flour of the Family

Spring wheat makes strong flour suitable for bread only—lacks the delicacy and flavour of Fall Wheat.

### BEAVER FLOUR

a blend of both, combines the best qualities of Manitoba Spring Wheat, Ontario Fall Wheat—the best family flour. Makes light nutritious bread; delicious pastry.

Dealers write for prices on all kinds of Flour, Corn, Oats and Cereals. T. H. Taylor Co., Limited, Chatham.

## No More Alcohol

As now made, Ayer's Sarsaparilla does not contain the least particle of alcohol in any form whatever. You get all the tonic and alterative effects, without stimulation.

# Ayer's Sarsaparilla

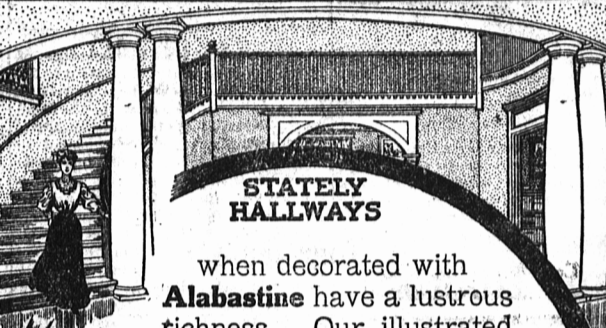
NON-ALCOHOLIC

When a stimulant is needed, your doctor will know it, and will tell you of it. Consult him freely about our remedies.

## The new kind contains no alcohol

We have no secrets to hide! We publish the formulas of all our medicines.

J. C. AYER CO., Manufacturing Chemists, Lowell, Mass.



### STATELY HALLWAYS

when decorated with Alabastine have a lustrous richness. Our illustrated book, "Homes, Healthful and Beautiful," tells why Alabastine is the most durable of all wall-coverings—how it destroys disease germs, and how you can decorate your home with Alabastine at much less cost than with any other material.

Send ten cents for a copy of "Homes, Healthful and Beautiful," with many dainty, new ideas for the decoration of your home.

Alabastine is sold by hardware and paint dealers everywhere—a 5 pound package for 50 cents. Ask your dealer for tint card. NEVER SOLD IN BULK. LTD.

# THE Alabastine Co.

12 WILLOW STREET, PARIS, ONT.

# GREAT SLAUGHTER SALE OF BOOTS, SHOES AND SLIPPERS !!

Having decided to go out of the Imported Boot and Shoe Business I hereby offer my entire Stock of

Boots, Shoes, Slippers, etc., at 20 to 33 1-3 per cent Discount

The Whole Stock Must Be Sold Sale For CASH Only

No Goods on Approval. Books Closed.

An opportunity to buy Boots and Shoes less than Factory Prices.

# J. H. BELL.

Use me gently, Strike me right, I'm a "Silent" Made for light.

I'm of use at dawn of day, And at eve I'm just as gay, Always ready with my light Burning warmly day or night

Always ask for "SILENT" PARLORS

SCHOFIELD PAPER CO., SELLING AGENTS, St. John, N. B.