

GOVERNMENT and CORPORATION SECURITIES
BOUGHT - SOLD - QUOTED
F. J. BRENNAN & COMPANY LIMITED
Members Investment Dealers Association of Canada
E. M. BAGNALL—Manager
Charlottetown
112 Richmond St. Telephone 1476

Advertising Rates—Payable in Advance
Minimum Charge For Any Advertisement 25 Cents.
Central Guardian Local 5c per word; Western and Eastern Local 2c per word; Announcements and Coming Events 3c per word; Classified 3c per word; In Memoriam Notices 4c per inch; Lists of Floral and Spiritual Offerings, Cards, etc. 5c per name; Letters of Condolence 2c per inch; Wedding Engagements 4c per word for 1st and 10c for each additional 3 words; Notices of Thanks and Appreciation, 4c per inch or 5c per word; Lists of Subscriptions, 4c per inch; Address and Presentation \$1.00. Other rates on application.

For Sale
FOR SALE—CHOICE GLADIOLI
W. B. Creed, Hignield.

Teachers Wanted
WANTED—TEACHER FOR
Bonshaw School. Supplement
\$400.00. Neil Salmon, Secretary.

Cars & Trucks For Sale
FOR SALE—1936 DODGE SEDAN.
Good condition. Malcolm Mac
Donald, Flat River.

Wanted
WANTED—TWO UNFURNISHED
rooms. Apply Box 112, Guardian.

Wanted
WANTED—ROOM BY YOUNG
man. Centrally located. Eat out.
Write 111 care Guardian Office.

Wanted
WANTED—A SECOND HAND
portable typewriter. Standard.
Reply to Box 110 care The Guardian.

Wanted
WANTED—CAR TO BORROW
for two weeks. Must be in good
condition and reasonably priced.
Apply Box 109, c/o Guardian.

Wanted
PROFESSIONAL MAN WANTS
4 or 5 room apartment or cottage.
Preferably furnished. Apply Box
108, Guardian.

Wanted
OAN ACCOMMODATE TWO
Students. Apply 17 Pleasant St.

SCHOOL & COLLEGE BOOKS
Again we are open to buy
school and college books.
Paying highest possible prices

EXCHANGE STORE
108 Richmond St.
Phone 869

SUPERINTENDENT OF NURSES
Restigouche and Bay Chaleur
Soldiers' Memorial Hospital,
Campbellton, New Brunswick.
60 Bed Standardized Hospital. Comfortable
suits in Modern Nurses Home.
Address replies to E. J. Davies,
care of above Hospital.

FOR SALE
AT ROSEBANK
Choice shore lots for summer
homes.
Apply
LESTER KEIZER
Phone 2002

Mining
(Canadian Press)
TORONTO, Aug. 10—
Sales Stock Close

2500 Akaitcho	70
1000 AP Con	74
1000 Alger	70
300 Anglo Cdn	260
1000 Apex	260
5000 Armistice	19
1500 Aubelle	19
100 Auror	800
105 Bk Mont	25 1-4
235 Bk NS	34
4500 Base Mt	22
2200 Beauclieu	1-2
3000 Bevcourt	38
1350 Bidgood	15
1000 Bordulac	32
11200 Brii Dom	22
1000 Broadbr	37
6500 Bufadison	18
100 Buff Ank	145
500 Buff Cdn	69
1000 Buff Rl	67 1-2
1500 Cal Edm	580
9000 Callian	12
500 Campbell	253
145 Bk Com	21 1-4
590 Cdn Brew	20 3-8
1200 Cdn Mal	57
1400 Caribou	105
800 Cent Pat	119
700 Chesterville	245
300 Cochenour	185
1500 Colomac	96
1500 Con Home	15
85 Con Smelt	12
2100 Conwest	117
1100 Dickenson	45
1500 Discovery	35
715 Dome	16 3-4
210 Dom Bank	14 1-2
1500 Donalds	65
2500 Dulama	18
1000 Duvay	65 1-2
500 E Mal	145
13000 Eldona	12
1000 El Sol	32
125 Falcon	415
700 Frohisher	171
170 Giant	440
2200 Globe	267
2850 Good Man	267
1000 Goldora	04 1-4
2000 Goldvue	11
2000 Goodfish	62 1-2
2000 Gulf Lead	124
1000 Hallor	61 1-4
8000 Hard Rock	22
1000 Heva Gm	10 1-2
300 Hollinger	860
825 Hud Bay	830
3000 Hud Bay	51 1-2
60 Imp Bk	35 1-2
1285 Int Nickel	33 1-2
1440 Kerr Add	13
2000 Keloro	18
7500 Kirk Gold	63
800 Kirk Lake	132
1000 Kirk Town	14
310 Labrador	560
9500 Laquerre	03
4300 L Dufault	68 1-2
200 Lake Shore	11 1-4
200 La Luz	230
1250 Little LL	71
2800 Louvicut	55
867 Macassa	225
7900 MacDonald	62 1-2
5100 MacLeod	85
1650 Maden	227
2650 Mal Gf	172
100 McKenzie	35
200 Min Corp	906
400 Mylamqu	80
150 Negus	210
1000 New Calumet	150
2500 New Marl	16
406 New Jason	38
2800 New Pacala	11 1-2
2000 Newnorth	03
1000 Nib	06 1-2
4000 Nicholson	15
250 Noranda	49 1-4
2790 Normalta	276
2000 Norpick	04 3-4
6300 North Inca	45
1805 O'Brien	172
1400 Ogama	56
200 Okalla	113
1000 Oskio	65
4000 Pac Pete	132
5100 Paymaster	34 1-2
3500 Pen Rey	13
2800 Porc Reef	41
2000 Preston	150
1000 Que Man	62 1-2
150 Que Mont	13
100 Reeves	160
2000 Richmac	14
2300 Roxana	81
40 Royal Bk	3-4
75 San Ant	345
7300 Senator	46
3200 Sheritt	235
57250 Silanco	51
700 Silver Mill	1-2
2500 Siscoe	40
2300 Springer	130
6300 Steep Ro	190
200 Sullivan	128
125 Tack Hu	256
2000 Thorburns	05 1-3
1500 Tobit	65
10400 Tran Ken	35 1-2
10400 Un Reno	145
550 Upp Can	165
100 Ventures	575
545 Wattle	800
1000 Wilsey	06 1-8
1380 Wright Har	263
220 Ykline Bear	68

New York Exchange

Anacosta	36
Am Car and F	43 1-2
Beth Steel	35 1-2
N Y Central	16 3-8
Cheese Ohio	27 1-4
Con Edison	24
Elec Auto Lite	48
Gen Elec	37 3-4
Gen Motors	62 3-8
Gen Oil	78 1-4
Std Oil NJ	71 1-4
Kennecott	56 3-8
Jont Ward	53 1-4
North Am I	15 5-8
Phil Pet	68 1-2
U S Rubber	45 1-2
Radio Corp	12
United Air	25 1-4
Vanadium Air	20 1-2
West Elec	23
West Union	20 1-2
U S Steel	77

BANKS

Commerce	21 3-8
Montreal	26 1-2
New Scotia	34 1-2
Royal Bank	25

Winnipeg Grain

WINNIPEG, Aug. 10—(CP)—
All grains today developed a
weaker tone in closing trade as
a Winnipeg Grain Exchange re-
flecting a decline in Chicago grain
prices.
Selling and hedging pressure
appeared in both oats and barley
with some shippers and processor
demand indicated in oats. Export
interests were credited with pur-
chases in barley on the decline.
The buying, however, was insuffi-
cient to turn the price upward.
Hedging sales in connection
with the new crop came in to the
futures market. Some offer-
ings also were attributed to an
American account. There was
fairly good demand from seaboard
houses on the decline but prices
closed lower.
Today's export business saw
750,000 bushels of Canadian wheat
allocated to the United Kingdom
under the Canadian wheat agree-
ment for shipment through the
Churchill, Man. Class two wheat
prices were unchanged from Mon-
day.
Cash prices:
Oats: No 2 CW 60 1-8; no ex
3 CW 71 1-8; no 1 feed —; no 2
feed 71 5-8; no 3 feed 68 5-8;
Barley: No 1 CW 6-row 1.15 1-2;
2 CW 6-row 1.15 1-2; no 1 CW
2-row 1.15 1-2; no 2 CW 2-row
1.15 1-2; no 3 CW 4-row 1.15 1-2;
no 3 feed 1.07 1-2; track 1.09 1-2;
no 2 CW yellow 1.10 1-2; no 3 CW
yellow 1.08 1-2.

CARB

SHIPPING NEWS

AT SAINT JOHN—
Arrived Tuesday
Vandalia, from Montreal
Sailed Tuesday
La Playa, for Central America.

AT HALIFAX—
Arrived Tuesday
Silver Cedar, from Newport
News
Stancourt, Cardiff
Silver Oak, Gibraltar
Sailed Tuesday
Imperial Regina, for St. John's,
Nfld.

FOR SALE

FOR SALE

FOR SALE

FOR SALE

Montreal Exchange

Albitibi	17 1-2
Asbestos	26 3-4
B A Oil	24
Bldg Prod	25 1-2
Bruck Silk	26
Bell Tel	169
Can Brew	20 3-8
Bathurst	21
Can Cement	21 3-4
Can Pacif	17 3-4
Celanese	83 1-2
Can Car Found	13 1-2
Can Car Pfd	16 1-2
Can Steam	12
Can Paper	13 3-4
Cookshutt	18 7-8
Can Vickers	40
Dom Bridge	24 1-2
Dom Coal Pfd	21
Don A	22
Dis Ser	18 5-8
Dom St B	16
Dryden	27
Fraser	58 3-4
Ford A	23 1-4
Fourin	21 1-4
Gen St Wares	15 3-8
How Smith	33
Iam Bridge	9
Hir Walker	26 3-4
Can Ind	25 1-2
Im Nickel	33 3-4
Iep Oil	16
Int Pete	13 1-2
Ir Power	43
Inter Paper	13
Imp Tob	61 1-4
L C Power	26 1-2
Con Smelt	113 1-2
Lake Woods	29
Massey Har	22
18300 Eldona	13 1-4
Nat St Car	23 1-2
Can Nor Pfd	9 3-8
Noranda	49 1-2
Price Bros	62
Shawinigan	22
St Law	11 1-4
St Law Pfd	42
Dom Textile	12 1-2
Don Tar	26 3-4
McCoy Front	26 3-4
St of Can	80
Brazilian	19 3-4

New York Exchange

Am Car and F	43 1-2
Beth Steel	35 1-2
N Y Central	16 3-8
Cheese Ohio	27 1-4
Con Edison	24
Elec Auto Lite	48
Gen Elec	37 3-4
Gen Motors	62 3-8
Gen Oil	78 1-4
Std Oil NJ	71 1-4
Kennecott	56 3-8
Jont Ward	53 1-4
North Am I	15 5-8
Phil Pet	68 1-2
U S Rubber	45 1-2
Radio Corp	12
United Air	25 1-4
Vanadium Air	20 1-2
West Elec	23
West Union	20 1-2
U S Steel	77

BANKS

Commerce	21 3-8
Montreal	26 1-2
New Scotia	34 1-2
Royal Bank	25

Winnipeg Grain

WINNIPEG, Aug. 10—(CP)—
All grains today developed a
weaker tone in closing trade as
a Winnipeg Grain Exchange re-
flecting a decline in Chicago grain
prices.
Selling and hedging pressure
appeared in both oats and barley
with some shippers and processor
demand indicated in oats. Export
interests were credited with pur-
chases in barley on the decline.
The buying, however, was insuffi-
cient to turn the price upward.
Hedging sales in connection
with the new crop came in to the
futures market. Some offer-
ings also were attributed to an
American account. There was
fairly good demand from seaboard
houses on the decline but prices
closed lower.
Today's export business saw
750,000 bushels of Canadian wheat
allocated to the United Kingdom
under the Canadian wheat agree-
ment for shipment through the
Churchill, Man. Class two wheat
prices were unchanged from Mon-
day.
Cash prices:
Oats: No 2 CW 60 1-8; no ex
3 CW 71 1-8; no 1 feed —; no 2
feed 71 5-8; no 3 feed 68 5-8;
Barley: No 1 CW 6-row 1.15 1-2;
2 CW 6-row 1.15 1-2; no 1 CW
2-row 1.15 1-2; no 2 CW 2-row
1.15 1-2; no 3 CW 4-row 1.15 1-2;
no 3 feed 1.07 1-2; track 1.09 1-2;
no 2 CW yellow 1.10 1-2; no 3 CW
yellow 1.08 1-2.

CARB

SHIPPING NEWS

AT SAINT JOHN—
Arrived Tuesday
Vandalia, from Montreal
Sailed Tuesday
La Playa, for Central America.

AT HALIFAX—
Arrived Tuesday
Silver Cedar, from Newport
News
Stancourt, Cardiff
Silver Oak, Gibraltar
Sailed Tuesday
Imperial Regina, for St. John's,
Nfld.

FOR SALE

FOR SALE

FOR SALE

FOR SALE

C.N.R. Appointments

MONTREAL, August 10 — Ap-
pointment of C. R. Murray, for-
merly general freight agent, Cana-
dian National Railway, Mon-
tré, to be assistant freight traffic
manager of the railway at headquar-
ters in charge of rates, tariffs, and
divisions, was announced here to-
day by John Pullen, general
freight traffic manager of the com-
pany.
Other senior appointments with
system jurisdiction announced to-
day by Mr. Pullen are C. L. Mc-
Coy to be general freight agent;
G. M. Douglas to be assistant gen-
eral freight agent, and A. Suther-
land to be assistant foreign freight
agent.
C. H. Garneys, formerly assistant
chief of tariff bureau, is made
assistant chief of tariff bureau for
the Central and Atlantic regions.



C. R. MURRAY

Charles Robert Murray, newly
appointed assistant freight traffic
manager, was born at Fraser's
Mountain, Nova Scotia in 1907 and
began his career in his native pro-
vince as an operator, and served in
various capacities at New Glas-
gow until his enlistment in the
Canadian Expeditionary Force in
1915. On demobilization in 1919 he
returned to railway service as an
operator and in 1921 was made a
car service operator at Toronto. In
the same year he was transferred to
Montreal as a tariff clerk in the
company's freight tariff bureau and
two years later was made
freight traffic manager and in
Toronto where he served suc-
cessively as station clerk, freight
traffic clerk and rate clerk. He
returned to Montreal in 1928 as
chief clerk in the office of the
freight traffic manager, and in
1933 became chief rate clerk. From
1937 to 1940 he served as chief clerk
to the general freight traffic man-
ager. In January of the latter year
he was appointed assistant general
freight agent at Toronto. He re-
turned to Montreal in the same
capacity the following November,
and in May 1945 was named to
the post of general freight agent.



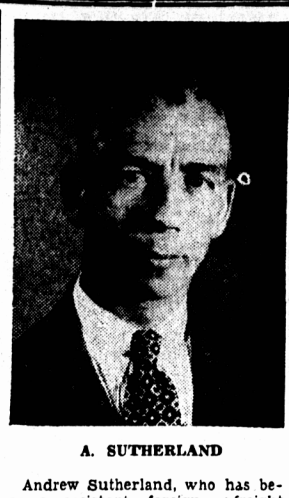
C. L. MCCOY

Charles Leslie McCoy, who has
been named general freight agent
for the company, is a native of
Moncton, N. B. He entered rail-
way service there in 1915 as a mes-
senger and served successively as
clerk and secretary until his trans-
fer to the assistant freight traffic
manager's office, Montreal, in 1926.
In 1921 he was made secretary to
the vice-president, in charge of
freight traffic at Toronto. He re-
turned to Montreal the same year
and served as a clerk in the tariff
bureau, division bureau, and the
office of the general freight traffic
manager until 1937 when he
was appointed chief clerk to the
general freight agent. Three years
later he became assistant general
freight agent.



G. M. DOUGLAS

George Mervyn Douglas, who is
now assistant general freight agent,
was born at Montreal and began
his career there in 1917 as a clerk
in the company's transportation
department.



A. SUTHERLAND

Andrew Sutherland, who has be-
come assistant foreign freight
agent, is a native of Aberdeen,
Scotland. He entered the service
of the company at Montreal in
1916. He rose through various posi-
tions to become tariff compiler in
1938 and chief rate clerk in 1943.
In 1947 he was promoted to chief
clerk to the freight traffic man-
ager.
Charles Hebert Garneys, assis-
tant chief of the tariff bureau of
the Atlantic and Central regions,
was born in London, England, in
1907. He joined the company at
Montreal and served as a clerk,
stenographer and tariff compiler
until his appointment as chief
tariff clerk in 1946.

Business Outlook Shows Progress

By FORBES RUDE
(Canadian Press Business Editor)

July took a lot of the uncer-
tainties of preceding months and
shaped them into a trend which
seems likely to govern the rest of
the year.

It confirmed a fast pace of busi-
ness, with continued shortages in
vital products. There are signs of
a catching up with demand here
and there in consumer goods, but
not enough to have any great
over-all effect.
The so-called "third-round" of
wage increases became a fact over
a wide range of industry; its most
dramatic form in Canada being the
17-cent increase given rail
employees; and, in the United
States, the capitulation of steel to
higher pay. Most price trends still
are upward, even though with some
consumer resistance and selective
buying.
While the picture is regarded
as virtually set for the balance of
the year, few forecasters care to
dip into 1949. This is not so much
because they hesitate to fore-
cast more obvious trends to their
logical development, but because
there are so many uncertain fac-
tors over the whole international
and domestic field.
Just now it looks this way:
Without extraordinary demands
there would be definite deflation-
ary influences. The extraordinary
demands are the European Recov-
ery Program and re-armament.
E.R.P. could be dismissed as an
extraordinary demand, because it
is really a support to what should
be normal demand and which, it
is hoped, will be replaced by nor-
mal demand before it runs out.

Re-armament

Re-armament, especially in the
United States but with strong re-
percussions in Canada, is extra-
ordinary because it comes on top
of E.R.P. and before even normal
domestic demand is met.

Ordinarily, barring a worsening
of international relations and a
further stepping up of re-armament,
all these things might settle
down by year-end to a position
where they would be met
without too great strain. On that
basis there might be an easing of
prices and at least changes in the
labor supply situation which could
create pockets of unemployment.
However, the heavy expenditure
of money both by industry and
from increased wages, can set off
increased demand, and the diffi-
culty of estimating how fast the
money supply will be turning over
by year-end is one of the things
that makes forecasting difficult.
One can take the view that the
present prices and wages level
is merely a normal adjustment
from controlled wartime condi-
tions. But having taken it, it is
difficult to see how the present
price-wage race can be carried any
higher when it is understood as
the present economic basis. If it

THERE OUGHTA BE A LAW!



Auction Sale

WEDNESDAY, AUGUST 18th, AT 2 P.M.

I am instructed by Mrs. S. D. Jay, 74 Cumberland Street, to
sell all her household effects consisting of: Kitchen cabinet, kit-
chen table, cupboard, oil stove, Enterprise kitchen range, Quebec
heater, dining room table and 6 chairs. Rocking chairs, studio
couch, ice chest, sideboard, settee and 4 chairs, 3-piece bedroom
suite, two iron beds,