



1897

Don't Worry About Vitamins

Of course, you need vitamins—and you can get them all in this breakfast: A glass of orange juice for Vitamin C—then a bowl of Shredded Wheat with whole milk for Vitamins A, B, D and E. A delicious breakfast, easily and quickly prepared and costs but a few cents. If you like a hot dish, pour hot milk over the biscuits.

SHREDDED WHEAT

WITH ALL THE BRAN OF THE WHOLE WHEAT

THE CANADIAN SHREDDED WHEAT COMPANY, LTD.

DAIRYING PRODUCTION OF CANADA

The total estimated production of milk in Canada in 1928 is estimated by the Dominion Bureau of Statistics at 14,813,000,000 pounds, as compared with 14,826,000,000 pounds in 1927. The total number of cows milked in 1928 was 3,226,424, as compared with 3,264,444 in 1927. The average milk production per cow is as reported by the Census of 1926 for the Prairie Provinces, while for the other provinces a figure 10 p. c. above that reported by the Census of 1921 has been used.

The production of milk by province is in pounds as follows: Prince Edward Island 182,177,182; Nova Scotia 435,111,018; New Brunswick, 435,013,650; Quebec 4,333,280,899; Ontario 5,778,477,078; Manitoba 921,835,323; Saskatchewan 1,378,703,547; Alberta 811,574,466; British Columbia 337,666,741.

The distribution of the total milk production amongst the different descriptions of dairy produce is estimated as follows: the quantities being expressed in pounds of milk: Butter, 2,103,300,000; creamery, 3,933,112,863; cheese, home-made, 4,872,661; factory 1,614,347,734; miscellaneous factory products 246,256,823; condensed milk otherwise used 5,582,018,671.

The production of butter and cheese in 1928 was, in pounds, as follows: Butter, dairy, 90,000,000; creamery, 162,577,000; total 252,577,000; cheese, home-made, 438,000; factory 144,584,619; total 582,582,619.

The total value of all dairy products is estimated to be \$297,625,347 in 1928, as compared with \$294,874,145 in 1927. Taking the items separately, the value for all Canada in 1928, with corresponding values for 1927 within brackets, are as follows: Dairy butter \$29,143,000 (\$30,439,121); creamery butter \$65,702,838 (\$65,705,944); home-made cheese \$32,000,700 (\$31,854); factory cheese \$30,494,463 (\$28,522,340); miscellaneous factory pro-



MODERN

New Hardware for up-to-date homes—combine the artistry with the dependability of durable Hardware design. May we show you Hardware in design appropriate to the character of your home's architecture? At no increase in cost. Though really worth more to you.

The Rogers Hardware Co., Limited

MAGIC LAMP REVEALS SECRETS

(British United Press)
LONDON, Feb. 11.—To assist in the task of deciphering faded manuscripts, the British Museum has installed an ultra-violet ray lamp. So far several interesting results have been achieved.

"Most of our experiments up to the present," explains E. Flower, deputy keeper of manuscripts, "have been devoted to palimpsests—documents from which the ink has been partially erased in order that they might be written over again. In the light of the lamp the original lettering shows up clearly enough for it to be read."

The lamp is equally useful for reading faded manuscripts, bringing the writing out quite distinctly. When a fragment of 14th century manuscript, its letters almost invisible in ordinary light, was held before the lamp, the writing grew clear at once.

"We shall photograph the parchments by ultra-violet ray and read them, if possible from the photographs," continued Mr. Flower. "One of the most striking examples of the value of the light has been in the reproduction of the sixth century Codex Ulfilas, now in Upsala University, Sweden."

"Written in silver on vellum this document is normally very difficult to read. When photographed by ultra-violet light however, so clearly did the lettering stand out that it was possible to reproduce the whole in facsimile."

Up to the present the museum lamp has been used chiefly for the examination of manuscripts, but experiments made with pottery indicate that it may be useful for detecting flaws or cracks.

Pieces of pottery have been repaired so skillfully as to make the cracks indistinguishable, have been examined, and the line of the joint disclosed by the lamp.

Undeveloped Land Survey

COUNTRY TRIBUTARY TO P. G. E. RAILWAY SURVEYED LAST YEAR

(By The Canadian Press)

OTTAWA, Ont., Feb. 7.—A detailed survey of some 20,000 square miles of undeveloped country in British Columbia tributary to the Pacific Great Eastern railway was made during 1929. T. S. Nash announced at the annual meeting of the Dominion Land Surveyors here today when making a report of the land surveyors committee. "The success of this Railway," he said "the present terminus of which is at Quesnel on the Fraser river, though it has been graded as far as Prince George depends upon the development of the country tributary to it and its extension to tap the Peace river country. The railway is owned and operated by the people of British Columbia."

In all the provinces of Canada there was an increasing public demand for topographical surveys and the resulting detailed maps which were so essential to the proper development of our natural resources, said Mr. Nash.

Town sites in the far north were surveyed, settlements on James Bay mapped out, oyster beds surveyed at Prince Edward Island, the boundary fixed between Ontario and Manitoba, 100,000 acres blocked out in the Peace river district. Mr. Nash's report was an impressive summary of the activity of this country in charting its resources. With the prospect of making possible the development of the country tributary to the P. G. E. surveys were made in cooperation with the Government of British Columbia, the Canadian National Railway and the Canadian Pacific Railway. For the purpose of ascertaining the extent of natural resources as well as the best route for the extension of the railway, 12 survey parties, as well as geologists, foresters, and water power engineers were sent into the field to collect the required data. The country covered includes a block between Bridge river and Chilcotin river, a block between Chilcotin river and Chilko river, both on the west side of the Fraser river in the vicinity of Quesnel Lake. The total area of these blocks amounts to some 12,000 square miles.

"North of Prince George" Mr. Nash said "a block of approximately 10,000 square miles in the vicinity of Parsnip River and Peace River valley was also surveyed and since there was available very little reliable information concerning this area, in the way of accurate maps, it was necessary to make them, since the first essential to the proper study of natural resources over a large area of country is a good detailed map to be used as a basis on which to show the resources information collected by the geologists, foresters, engineers, etc."

"Here the aeroplane was brought into service" said Mr. Nash "and in cooperating with the Royal Canadian Air Force the Topographical Survey of the Department of the Interior assisted the Provincial Government in obtaining vertical aerial photographs covering approximately 5000 square miles. To this was added another 3000 square miles by a commercial company.

"From the information collected by the surveyors, aided by aerial photographs detailed maps are presently being prepared at Victoria to accompany the report on the resources.

"The surveys of the Department of the Interior for 1929 extended over the length and breadth of the Dominion. There was mapping from the Rocky Mountains to the Maritimes. There was topographic work at Fort Smith and at Aklavik on MacKenzie river delta. A settlement was laid out on an island in James Bay, and surveys were made to govern the leasing of oyster beds in Prince Edward Island. The aeroplane was pressed into service and for the first time was the sole means of transport of a party making land surveys on Churchill river and Reindeer lake, thereby adding many weeks to the effective survey season that would otherwise have been spent in arduous toil on the portage.

"The rush of settlers into the Peace River district necessitated the resumption of subdivision surveys and two parties blocked out over 100,000 acres of farm lands for settlements largely due to the growing of prize grain in the district a few years ago and proportions that more extensive subdivision will be required for a number of years, of lands that have been examined and found eminently suitable for farming.

"A preliminary survey was made of the Ontario-Manitoba Boundary from the northern end of the meridional portion northwesterly to the eastern end of Island Lake. The geographical position of the former point has been accurately determined from geodetic points in southern Manitoba, but the position of the latter was known only from mapping operations, which were not deemed sufficiently accurate to determine the direction of a trail line 80 miles long, and an accurate astronomical determination of this position was considered necessary. Ordinarily this would have meant delaying the work one year to permit these observations to be made. To avoid this delay, the geodetic survey undertook, by making use of aeroplane transportation, to make the necessary observations at Island Lake, and to deliver the results of the computations to the party at the other end of the 80 miles line in time to correct the direction of the trail line begun at that point, if necessary. This was done, and the result of the observations of the Geodetic Survey party was found to be so close to the bearing of the trail line that the latter was carried through to the end, a distance of 80 miles without deflection, and missed its objective by only five feet. This indicates an extremely high degree of accuracy in the taking of the observations, determining the bearing of the line and in carrying the line forward as a truly straight line.

"I warn against the irritation produced by many ordinary soaps—use only Palmolive"



says **S. PESSL** of Vienna and Budapest
Whose beauty house has served aristocracy for over a hundred years

Every skin needs the deep cleansing which only the vegetable oils of palm and olive can give

"No skin can remain beautiful," says the famous Pessl, of Vienna and Budapest, "if it is not regularly cleansed with soap and water. But to say 'Use any soap' is dangerous. You should be particular in choosing a soap for your face.

"Only a pure soap—a soap made of fine, soothing cosmetic oils—will do. That is why I recommend only Palmolive."

Pessl, international authority

To Pessl's shop, across from the Opera House in Vienna, come women whose names are famous in society, the world of opera and the stage. And he advises them all to use this home beauty treatment which takes so little time and produces such gratifying results.

Massage a bland lather of Palmolive Soap and warm water gently into the skin, letting the lather get deep into every tiny pore. Then rinse away soap, dirt, make-up with warm water, finally with cold. And you'll find that your skin is wonderfully soft, smooth, protected against the many abuses of modern life.

Beware of irritation

So many soaps irritate while they cleanse. They are apt to roughen the texture of the skin and spoil its delicate coloring. Palmolive is a pure vegetable oil soap. Its color, its odor, its very feeling is that of nature's great cosmetic oils. It cleanses safely, easily.

Here Pessl is one of a great international group of beauty specialists who have discovered the facts about Palmolive for themselves and who now tell their patrons to use this soap in preference to any other. Today, there are over 18,900 such experts. Think of that! Thousands and thousands of those best fitted to know proclaim Palmolive best.

You will like Palmolive. You will be using it soon for the bath, too, since it costs even less than quite ordinary soaps. Follow Pessl's advice. Begin this very day.

"Palmolive Soap is made of pure vegetable oils. I warn my clients against the irritation produced by ordinary soaps. Those who use Palmolive show the best results after our own beauty treatments."

S. Pessl
KARNTNERSTRASSE 28, VIENNA



Pessl's salon, across from the famous Opera House in Vienna, bears the seals of many royal houses which he has served as beauty adviser.



Retail Price 10c

Consider the weight of this professional advice! 18,907 beauty experts recommend Palmolive!

ROBOT OF THE AIR KEPT SECRET

LONDON, Feb. 12.—It is rather curious that information concerning the development of new aircraft by the Royal Air Force, which is not permitted by the Air Minister to be published in Britain, should be freely circulated abroad.

It has been known in aviation circles in Britain for some time that a highly successful automatic pilot has been invented and successfully used, but no reference to it was permitted.

Now however, French newspapers have given detailed description of this apparatus, which is known as the Pilot's Assistant or the Robot pilot. This ingenious device is capable of controlling an aeroplane even more precisely than a skilled human pilot, and a flight of 400 miles has been made with a machine fitted with the robot, without the human pilot once touching the controls.

The principle involved is that of the gyroscope driven by compressed air. It can be brought into use at the will of the pilot who may leave his cockpit in the case of a large bombing or commercial machine and walk about the cabin.

According to the "Journal de L'Aviation Française" D. H. 9a Hydro-Aviation and Virginia service bombing planes have been equipped with the robot pilot, and also a Southampton Napier flying boat. It stated furthermore that a squadron of Virginia night bombers had likewise been completely installed with robots.

THE CURSE OF SNAKES

(British United Press)
LONDON, Feb. 12.—Strange stories of a witch's curse are told by Frank Hives, once a district commissioner in Africa, in his book on "Juju and Justice in Nigeria." One of the author's most uncanny experiences was that of having the "snake curse" put on him by an old woman who believed him to be responsible for her son's imprisonment.

Snakes of all sizes and varieties followed him wherever he went. He found them in his bed and in his boots. Most of them were poisonous and some were more than five feet in length.

The old woman waited for him outside his compound at Obudu and put the "snake curse" on him in front of his native servants and the whole village.

"I could have had her locked up as a crazy person," writes Mr. Hives "but after a while I could not have given the order, for I felt as though I were being hypnotized, and could only stare blankly at her."

The following afternoon Mr. Hives found a fat, brown snake coiled up on his bed. His orderly decapitated it with a machete. Within the next three days fifteen other snakes were found and killed all in places where he was likely to go. He decided to leave the station. But as soon as he reached his destination he found several snakes basking in the sun on the low mud walls as if waiting for him.

"Then when I was asleep under my mosquito curtain that night," continues Mr. Hives, "I was disturbed by a flop above me. When I raised my hand it came in contact with something heavy that was making the curtain sag almost down to my face. Cautiously I touched it again and felt the cold, clammy coils of a snake."

The victim of this uncanny curse then decided to return to Obudu and find the old woman responsible. No sooner had he arrived than he found a snake on top of his boxes. In his attempt to kill it he shot himself in the foot.

Shortly afterwards when he had sufficiently recovered, he produced his false teeth and showed them to the witch's free, doing in a menacing voice that she did not recognize the curse his teeth would haunt and bite her for the rest of her days. Luckily she believed him and he was never troubled by snakes again.

IF YOU SPIT PHLEGM YOU HAVE CATARRH

When you are sneezing, eyes running, mucus all clogged up—that's the time you need Catarrhone. The healing vapor of Catarrhone goes down the discharge, cleanses you to breathe freely again, exterminating the cold quickly. All cases of Catarrh will disappear. Pain over the eyes goes away, a weak throat is strengthened, the voice grows clear and strong, spitting, sneezing, and nasal discharge are permanently overcome. Catarrhone—today, two months' treatment \$1.00. Smaller and 50c. At all druggists.

More than 1,000,000 tons of raw sugar will be produced in Czechoslovakia this season.

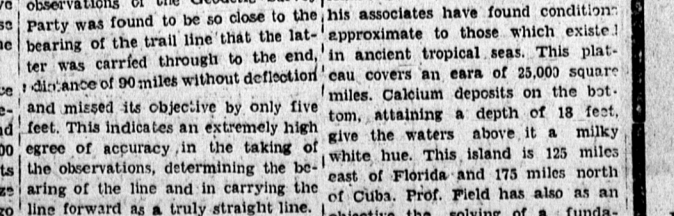
The sixtieth anniversary of the opening of the Suez Canal was celebrated recently.

Special Offer

UNIVERSAL Electric Waffle Iron ONLY \$2.00 DOWN

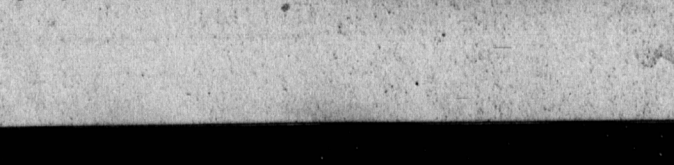
Balance \$1.80 a month for 5 months, a total of \$11. Or if you pay cash, only \$10.75.

This offer is for February only. See the iron today.



Maritime Electric Co., Ltd. of the ASSOCIATED SYSTEM

Charlottetown, P. E. I.



NERVILINE Drives Out Pain