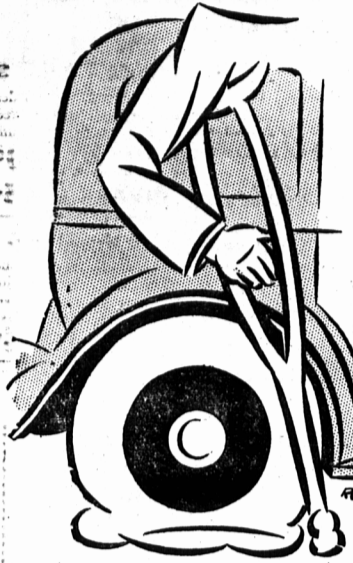


### Don't cripple your car with a makeshift tire repair



Unless you want to find yourself habitually limping along on a flat tire, don't be satisfied with anything but a permanent repair. You'll find it far more economical in the long run to bring the punctured or blown-out tire to us. We use finest Goodyear materials, Goodyear factory methods—and we guarantee the repair.

Do it NOW. Bring in your punctured spare today or tomorrow. To drive without a good spare is to court DANGER. The cost for a permanent, vulcanized repair is very small.

### A. HORNE & CO.

Central Garage  
Charlottetown Telephone 538  
EXCISE TAX EXTRA

### BLUE BUS LINE Schedule

Leaves	Arrives	Leaves	Arrives
Peter's Road ..... 7.45 A.M.	New Perth School ..... 9.05 A.M.		
M. H. North ..... 8.00 A.M.	Summersville School ..... 9.15 A.M.		
Riley Cr. Gasperaux ..... 8.20 A.M.	Vernon River ..... 9.25 A.M.		
Sturgeon Bridge ..... 8.30 A.M.	Cherry Valley ..... 9.35 A.M.		
Geo. Poole's Store, Lower ..... 8.30 A.M.	Pownall ..... 9.45 A.M.		
Montague Office, Upper ..... 8.30 A.M.			
Montague ..... 8.50 A.M.	Arrives Charlottetown ..... 10.15 A.M.		
Leaves Revere Hotel 4.00 P. M.	Arrives Peters Road 6.30 P. M.		

Parcels carried at 25c minimum charge.  
Bus will stop on signal at any point en route.  
L-8870-28-11.

### CITY BUS SERVICE DAILY EXCEPT SUNDAY

CHARLOTTETOWN LEAVES	SOURIS TIMELEAVES	ELMIRA TIME
Elmira ..... 7.15 A.M.	Charlottetown ..... 4.10 P.M.	
Souris ..... 8.10 A.M.	Mt. Stewart ..... 5.00 P.M.	
St. Peter's ..... 8.55 A.M.	M. Morell ..... 5.25 P.M.	
Morell ..... 9.15 A.M.	M.S. Peter's ..... 5.45 P.M.	
Mt. Stewart ..... 9.40 A.M.	Souris ..... 6.30 P.M.	
Arrives Charlottetown ..... 10.30 A.M.	Arrives Elmira ..... 7.15 P.M.	

Bus will stop on signal at any point en route.  
Headquarters in Charlottetown, Old Spain Tea Rooms.

### Fardy Bus Service & Taxi Service CHARLOTTETOWN to FORTUNE TIME TABLE

Leaving Charlottetown ... 4.00 p. m.	Leaving Fortune ..... 8.15 a. m.
" Hazelbrook ... 4.20 p. m.	" Dingwell's ..... 8.25 a. m.
" Keeffe's Lake ... 4.35 p. m.	" Dundas ..... 8.45 a. m.
" 48 Road ... 4.45 p. m.	" Bridgetown ..... 8.50 a. m.
" Cardigan ... 5.00 p. m.	" Cardigan ..... 9.05 a. m.
" Bridgetown ... 5.15 p. m.	" 48 Station ..... 9.20 a. m.
" Dundas ... 5.20 p. m.	" Keeffe's Lake ..... 9.30 a. m.
" Dingwell's ... 5.40 p. m.	" Hazelbrook ..... 9.45 a. m.
Arrive Fortune ..... 5.50 p. m.	Arrive Charlottetown ..... 10.05 a. m.

Headquarters in Charlottetown — DIANA TEA ROOMS, Phone 1374.  
Headquarters in Souris — LENNOX HOTEL.

### AUCTION SALE

I am instructed to sell by public auction, the farm of William K. Easter, containing 50 acres, good buildings, with or without crop, to suit purchaser. 1 mile from Whitshire Station. Also stock of pure bred Jerseys and Grade Cattle. Terms made known at sale, September 4th at 1 P. M. If not fine following day.

ALEXANDER MACRAE, Auctioneer.  
WM. K. EASTER, Owner.  
L-8904-8-29-41.

### FARM FOR SALE AT FAIRVIEW

Containing 112 acres of land nearly all clear, excellent site and located 3 1/2 miles from Rocky Point Ferry. Splendid dwelling house, front facing West River. Well watered and farmed. Churches and Schools at door. If not sold privately by Monday, September 10th, will be open on the premises at 2.30 o'clock. Priced cheap. Write or phone.

ANGUS BUCHANAN, New Dominion  
J. A. MacDONALD, Auctioneer,  
300 Sydney Street  
8894-8-21-23-26-28-30-9.

### Executor's Notice

The undersigned executors of the last will and testament of Ada Louisa Williams, late of Oyster Bed Bridge in Queens County in Prince Edward Island, formerly of North Rustico in Queens County aforesaid, widow, deceased, testate, hereby notify all persons indebted to the said estate to make payment to them at the office of A. J. Haslam, Solicitor, Brace Building, Charlottetown, and all persons having any claims against the said estate are hereby required to present the same duly attested at the office aforesaid within six months from this date.

### HAMILTON HORNE, AMASA HORNE, Executors.

### AUCTION SALE at VERNON RIVER THURSDAY, SEPT. 6th AT 2 P. M.

Cottage, barn and 1 1/2 acres of land, formerly property of the late Minnie Currie, near school, churches and railway. Terms cash.  
J. A. MacDONALD, Auctioneer.  
L-8628-9-1-31

### W. C. T. U. Notes

#### PUTTING GOD IN THE NATION'S LIFE

"Putting God in the nation's life," Bringing us back to the ideal thing; There's something fine in a creed like that— Something true in those words that ring: Sneer as you will at the "preacher's air," Scoff you will at the Bible tang; It's putting God in the nation's life That will keep it clear of the crooked "gang." We've kept Him out of its life too long, We've been afraid—to our utter shame—to put Him into our speech and song, To stand on the hustings and speak His name; We've put all things in that life but HIM— We've put our selfishness, pride and show; It is time for the true ideal to come, And time for the low ideal to go; Putting God in the nation's life, Helping us think of the higher thing; That is the kind of speech to make; That is the kind of song to sing; Upward and forward, and let us try The new ideal in the forthright way. "Putting God in the nation's life And putting Him there in a style to STAY." —Contributed by Mrs. K. A. Gaudin Stettler Alta.

#### THE MATCHLESS BOOK

In these days of depression, when faith is tested, of the limit and men's hearts fall them for fear, it is refreshing to know that God is projecting His own Word—"The entrance of Thy Word giveth light." It will never cease to function, until time shall be no more; its gospel shall be preached, me shall be convicted of sin and brought to Christ, when the British Empire and the American Republic have become the historical facts. This is the Book of Ages. It contains the mind of God, the state of man, the way of salvation, the doom of the sinner, and the happiness of believers. Its doctrines are holy, its precepts are binding, its histories are true, its decisions are immutable. Read it and you will be wise, believe it and you will be safe, practise it and you will be holy; It contains light to direct you, food to support you, and comfort to cheer you. It is the traveler's map, the pilgrim's staff, the pilot's compass, the soldier's sword, and the Christian's charter. Here Heaven is opened, the gates of Hell disclosed, Christ is its grand Subject, our good its design, and the glory of God its end. It should fill the memory, rule the heart and guide the feet.

Read it slowly, frequently, prayerfully. It is a mine of wealth, a paradise of glory and a river of pleasure. It is given you in life, will be opened at the Judgment, and be remembered forever. It involves the highest responsibility and reward, and the greatest labor, and condemn all who trifle with its sacred contents.— Evangelical Christian

#### SOME INTERESTING FACTS ABOUT BEER

(By Ralph Efor in Christian Standard.)

"From standard textbooks on brewing we learn that, as a first step in beer production, barley grains are soaked in warm water and sprouted, in which process the starch is changed to a soluble sugar known as "maltose."

#### Valuable Farm For Sale, Also Growing Crop

The undersigned will offer for sale at public auction on the premises on Wednesday, the 5th of September, 1934, at 2 o'clock p.m., unless sold by private sale in the meantime, 100 acres at Alberly Plains, Lots 48 and 49, in Queen's County, with good dwelling house and large outbuildings, property of late John A. Richards and of Phoebe D. Richards. Also at the same time and place a large quantity of hay, 2 acres barley, 4 acres wheat, 16 acres oats, 8 acres potatoes, and 2 acres turnips. This property is situated in one of the richest farming sections in the county and may be sold with or without growing crop as required. For particulars apply to McLean & McKinnon, Royal Bank Building, or to the undersigned.

PHOEBE D. RICHARDS, JOHN A. McDONALD, Auctioneer.  
L-8890-8-28-61

#### Desirable Property FOR SALE

The undersigned offer for sale 99 acres of choice land at North Rustico with a good dwelling house and outbuildings, property of the late Ada Louisa Williams. This property situated at Doyle's Cove on the North Shore, is an ideal place for summer cottages. For further particulars apply to A. J. Haslam, Barrister, etc., Brace Block, Charlottetown, or to the undersigned executors of the last will and testament of the said Ada Louisa Williams.  
HAMILTON HORNE, North Milton.  
AMASA HORNE, Oyster Bed Bridge.  
L-8921-9-1-8-16-22.

### Temperance Notes

(A column of undoubted fact and worthy opinion re the Temperance Situation. Under the auspices of the Sons of Temperance.)

#### ALCOHOL AND THE MOTORIST

"Alcohol slows down the reflex action, which is a medical term for what is an everyday, but complicated process. A driver sees a child dart out from a side road. His eye has to focus the scene, his retina passes the impression on to the brain, the brain in turn has to hold a quick court of judgment to decide whether the child and the car will collide unless something is done, and if the decision arrived at is that there is danger if impact, another part of the brain has to think out how to stop or slow the car, and then it commences the necessary muscular action to the right hand or foot which moves in response and applies the brake. Normally it takes a driver, say, a fifth of a second from the time he sees the child to the instant the brake is jerked on—if it is wanted. Now a very smart driver of alcohol—say one whiskey and soda—can in certain cases slow down that reflex action until it takes twice or even three times as long to perform as it would otherwise. Alcohol also has a direct effect—one that is optical. When you or I, my reader, drive along a road, we look straight-ahead, and focus on the farthest point we can see. Now, let a man step off the pavement, say, ten yards in front of the car. We notice the action, and our minds register it, because, although we are looking a long way ahead, our minds are attuned by custom to note subconsciously, perhaps—any movements on the sides of the roads. In other words, when normal, we can see what we are not looking at directly. The effect of alcohol is to cut down this side sight, as it were, and thus our receptive comprehension—long words, but quite simple—is very much diminished. Every motorist should realize that even the smallest quantities of alcohol have deleterious effects upon his driving. —From The Light Car and Cycle Car.

#### SO PROVED IN THE LABORATORY OF LIFE

Evangeline Booth, Commander of the Salvation Army, who knows from experience in salvaging human wrecks, says: "Drink has drained more blood; Hungre more crepe; Sold more homes; Plunged more people into bankruptcy; Armed more villains; Slain more children. Shamed more wedding rings; Defiled more innocence; Blinded more eyes; Twisted more lives; Dethroned more reason; Wrecked more manhood; Dishonored more womanhood; Broken more hearts; Blasted more lives; Driven more to suicide. And more graves. Than any other poisoned secure that ever swept its death-dealing waves across the world.

Other cereals are mixed into a wet mash of this malted barley, their starch is also changed to sugar, and additional cane sugar or glucose is added to the mash, which is then boiled for some hours in water to which a quantity of hops has been added. The result is called "wort."

#### BEER CONTAINS MORPHINE

"Hope contain oils, resins and bodies called 'alkaloids.' But they also contain morphine. The presence of morphine in hops was first discovered in 1885 by a German chemist, Williamson, who called the drug 'iso-morphine.' But Landers, another German chemist, later proved beyond doubt that Williamson's 'iso-morphine' was actually the drug morphine. Brewing experts and standard brewing trade textbooks confirm the presence of morphine in hops, and attribute part, at least, of the stupefying effects of beer to the morphine. They also tell us that hops contain a quantity of tannic acid, which medical authorities declare to be harmful to the human system. "The thin, hope-flavored syrup, wort, is strained, cooled and pumped into fermenting vats, where yeast is added. The wort is then allowed to decompose. A touch of preservative is thus in all beer. Other by-products of decomposition in the beer are small quantities of acetic acid, fusel oil, furfural and some esters and aldehydes, all harmful to the human system.

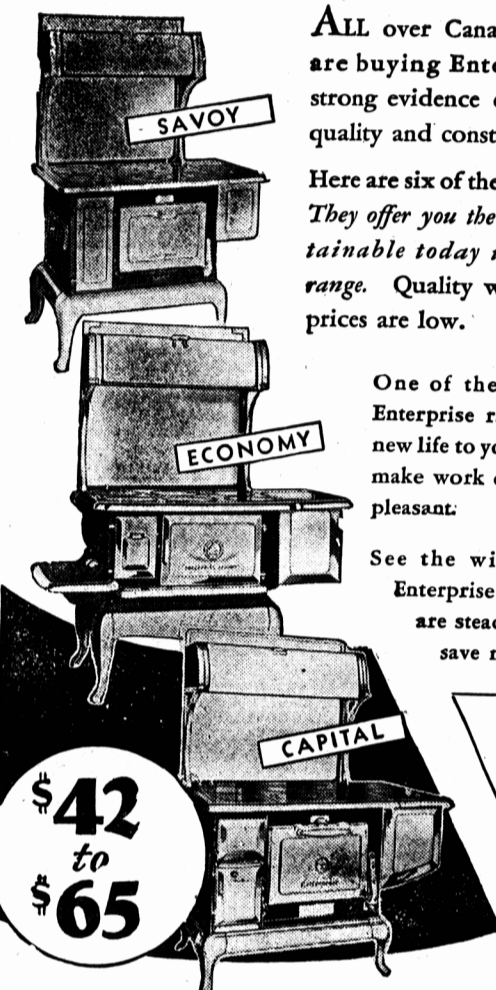
#### NUTRITIOUS AS DISHWATER

"When I was in college some years before prohibition, the professor came into the college laboratory with a peculiar amber liquid, and told us to analyze it. Had we known its nature before our analysis, we might have called it something very different. For we found to our amazement that that sample of beer was a watery compound of mucilage, alcohol, hop-bitters, carbonic acid gas and putrefied yeast cells, with quantities of morphine, tannic acid, acetic acid, fusel oil, furfural and some esters and aldehydes, and there was also a quantity of some element that we never could identify. The whole mixture was about as nutritious as common dishwater—not nearly so palatable."

#### ITALIAN DOCTORS AND WINE

"An obstacle to the digestion," Dr. Beallanti, University of Pisa, "Always unnecessary, often harmful." Dr. G. Jona, Civil Hospital, Venice. "In the majority of cases useless," Dr. Muggia, Sondrio. "Better not to drink wine at all with food," Dr. Fellizi, Pisa University.

## The Finest Range You Can Buy ENTERPRISE At a price you can afford



ALL over Canada, more homes are buying Enterprise ranges—strong evidence of their superior quality and construction. Here are six of the popular models. They offer you the biggest value obtainable today in a high-grade range. Quality was never better; prices are low.

One of these smart new Enterprise ranges will give new life to your kitchen, and make work easier and more pleasant.

See the wide variety of Enterprise ranges. Prices are steadily rising. You can save money by buying now.

\$42 to \$65

Small Down Payment \$5 and up (according to the model you choose), followed by easy monthly payments, will put an Enterprise Range in your home.

\$69 to \$98

Clip out and Mail this Coupon THE ENTERPRISE FOUNDRY CO., LIMITED Dept. 1, Sackville, N.B. Please send me full particulars about Enterprise Ranges. Name: Address: The fuel I burn is Coal ( ); Wood ( ); Gas ( ); Electricity ( ).

## ENTERPRISE for Every Cooking and Heating Need

See Complete Display of ENTERPRISE RANGES at New Lower Prices R. T. HOLMAN LTD. Summerside Island Distributors Charlottetown

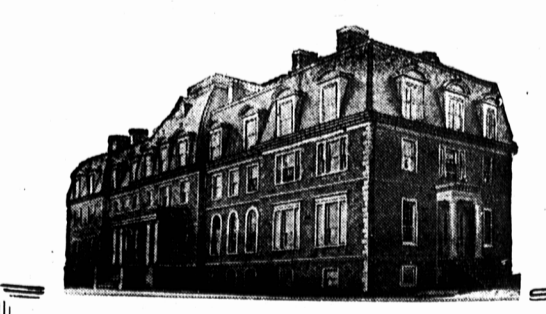
### Tribute to Late G.P.R. Vice-President

(C. P. by Guardian's Special Wire) MONTREAL, Aug. 30.—In peaceful old St. George's Church, on which he had often gazed during the years his offices were in the Windward Station across the street, Mr. Grant Hall, Vice-president of the Canadian Pacific Railway will on Friday receive final tribute from leading Canadians and old friends in railway life. The funeral service will be conducted by Right Rev. Lennox W. Williams, Bishop of the Diocese of Quebec, assisted by Rev. F. B. Stiles, assistant pastor of the church. Interment will be in Mount Royal Cemetery. Mr. Hall died early yesterday morning after being taken to hospital Aug. 11 following a stroke. His condition improved for a time. But he failed again a few days ago. He was 70 years old. Tributes were received today from fellow officials, from many friends and from employees who had known him as a fair and conscientious officer. Mr. E. W. Beatty, President of the

### Hay and Straw To Be Imported Free

(A. P. by Guardian's Special Wire) WASHINGTON, Aug. 30.—The treasury today ruled that hay and straw—needed badly to feed livestock in drought states—may be imported into the United States duty free from any nation on the globe. In executing the presidential proclamation declaring an emergency Secretary Henry Morgenthau said too, that other livestock feeds may be added to the list later. The orders giving free importation of hay and straw were issued shortly after the weather bureau reported that recent rains had broken "the backbone of the drought." Lifting of the duties will be effective only until July in 1935, or an earlier date if the President proclaims that the emergency is at end. Use Minard's for Pimples

The meat from which soup has been made becomes rather tasteless, but it still contains most of its nourishment. Therefore, it may be used in hash, meat pies and ragouts, where the flavour of vegetables and seasoning compensates for the lack of meat flavour. — Beef, How to Choose and Cook It, Dominion Department of Agriculture bulletin.



### UNIVERSITY of NEW BRUNSWICK FREDERICTON, N. B.

Session 1934-35 Begins September 18 COURSES IN ARTS AND PURE SCIENCE Three new buildings with Courses arranged for the lack of modern well equipped Lab-entending to enter Medical oratories. Excellent oppor- and Law Schools. tunities for specialization. COURSES IN ENGINEERING AND FORESTRY Applied Science courses in-Complete courses extending clude Civil Engineering, Elec-over four years and leading trical Engineering and For-to the Degree of B. Sc. in estry. Engineering and Forestry. The Law Faculty (write A. B. Gilbert, Esq., Secretary, Saint John, N. B.) is located in Saint John. The Lady Beaverbrook Building affords first class residence accommodation for men. Full information regarding courses, terms, scholarships, etc., is contained in the University Calendar. A copy will be mailed on request. C. C. JONES, President

KING'S COLLEGE SCHOOL Windsor, Nova Scotia A Residential School for Boys 8-18 years. Grades 3-12. We give a thorough education for life, Mentally, Morally and Physically. Boys are prepared for Universities, R. M. C., Navy. Modern Buildings—Healthy Location—69 Acres Land. The Success of King's College School Old Boys is the best evidence of the training received in the school. Organized Sports—Football, Hockey, Tennis, Badminton, Track. K. C. S. Cadet Corps is the best trained in the province. Autumn Term Opens Sept. 18th. Apply to the Head Master.