

**GIVE BETTER SERVICE**

CHAMPION'S exclusive sillimanite insulator is practically impervious to carbon and oily deposits. Special analysis electrodes resist pitting and burning to the utmost. That is why Champions excel in service.

**CHAMPION SPARK PLUGS**  
Windsor, Ont.  
A CANADIAN-MADE PRODUCT

**Foxes and Fox Ranchers**

Keep your foxes healthy. "Prevention is better than cure." Feed lettuce to your foxes. Grind up the lettuce with meat cutter and mix with feed, and note results. Too much meat without the necessary vitamins contained in lettuce will end up with sick foxes. Bring along containers.

J. J. GAY & SON,  
Phone 264.

**PEERLESS FOX NETTING**



**"WHAT WE HAVE WELL HOLD"**

**"It's Better to be Sure Than Sorry"**

Your Foxes are the most profitable investment that you have. Are you going to lose them, by using any other Netting than Peerless?

"Certainly not."

"Why?"

"Because," you feel at ease knowing that the best "QUALITY NETTING" is protecting your Foxes.

This netting is GALVANIZED before and after being woven.

Hangs flat without bagging or sagging and makes a perfect fence.

Can be erected by an "AMATEUR."

SPECIALLY MADE FOR US.

OUR PRICES ARE THE BEST ON THE ISLAND.

**The Rogers Hardware Company, Ltd.**  
8332-6-6-11.

**STRAWBERRY BOXES**

100,000 in Stock

Wholesale & Retail

Regulation sizes as required by the Small Fruits Act.

STRAWBERRY SIZE (one quart.)

PINT SIZE for all small fruits. Special prices in lots of 5000 boxes and over. For sale at our SEED STORE.

**CARTER & CO. LIMITED**  
Seedsman Charlottetown

**Happenings of the Week**

(Continued from Page 8.)

Many friends here heard with regret of the death of Mr. A. Milne Fraser of Halifax who was an annual visitor here for many years.

Mr. and Mrs. A. R. Wise, Euston St., were happily engaged throughout the evening of July 5th when many of their relatives and friends called to greet them, and offer best wishes on the 25th anniversary of their wedding day. The home was very prettily decorated with an abundance of summer flowers. Mrs. G. M. Richards and Mrs. L. W. Saunders very pleasantly ushered the guests to the dining room where dainty refreshments were served from a tea table presided over by Mrs. R. E. Mutch, pouring tea and Mrs. Charles L. Bustin cutting the loaves. Assisting in serving were Mrs. W. E. Bearisto, Mrs. J. Ness Wise, Winnipeg, Misses Inez Mutch, Marie Mutch, Vivian Gay, Ina Muir, Estella and Vera Wise. Mrs. H. C. Muttart and Mrs. A. B. Sellar replenished the door was opened by Miss Dorothy Saunders. Many beautiful pieces of silver were received to mark the passing of the joyous event.

Mrs. A. J. A. Hoyle, Calgary, Alta., is visiting friends in Charlottetown and West River. Mrs. Hoyle is a niece of George and Havelock Ellis, 28 Prince Street, and grand daughter of the late Angus and Mrs. McDonald, West River.

Mrs. W. P. Doull gave a small tea on Thursday in honor of her daughter Mrs. Don E. Markle of Tulsa, Oklahoma, just the intimate friends of Mrs. Markle being invited. Mrs. Markle, who is being cordially welcomed hopes to make a longer visit with her husband next summer.

Ribbons for various purposes are showing signs of returning to their former style prestige. Hand-blocked Dresden ribbons of different widths are being endorsed for dress trimmings and for huge sash bows, now so important an adjunct to the bouffant evening dress. Narrower widths in woven designs to be used for children's hair ribbons are also conspicuous.

For handbags there are needle-point tapestry ribbons, which are especially serviceable for making an envelope bag or one of the flat bags with a straight top frame which does not encroach on the body of the bag.

The designs are either exact reproductions of old tapestries or very modernized patterns. For the conventional type of envelope bag the ribbon has the design broken up in sections, first one part for the back, then one for the front and a flap, and then one for a continuous side or joining part, which also may be used for the bottom of the bag.

These same pieces can be used for bags with ornate frames by omitting the flap or cutting it down to the size of a thumb tab. These new ribbon bags are highly practical, especially as several may be had at a reasonable price.

A very cordial welcome is being extended to Miss Frances McNutt who has arrived from Calgary on a visit to her former friends here and in Malpeque.

Mr. and Mrs. Charles Beers and child were the welcome guests this week of Mrs. Beers' parents Mrs. M. G. Teed, St. John.

Mrs. Robert Hampson and family arrived from Montreal this week to spend the summer at Brackley Beach.

The hostesses at the Summerside Golf Club this afternoon will be Miss Eleanor Green, Miss Ethel Tanton, Miss Bertha Schurman and Miss Emma Bradshaw.

Mrs. (Dr.) Goodwill and Mrs. Bagnall of Charlottetown were the guests this week of Mrs. D. R. Morrison of Summerside.

Mr. Norman McLean, who has been visiting on the Island and renewing old friendships returned to his home in Boston, Mass., on Thursday.

Mr. David Stewart who has been visiting his parents Hon. J. D. and Mrs. Stewart leaves this morning to resume his duties on the engineering staff of the Shawinigan Paper Company, Quebec.

Miss Helen A. Rogers has returned to Malden, Mass., after a short but pleasant holiday at her home here.

H. R. H. the Duke of Connaught, former Governor-General of Canada, and Princess Patricia, his daughter, greeted many old friends from Canada at the Government reception

**The Car Owner's Scrap Book**

By G. W. Donald

**Various Ignition Trouble**

There are so many different kinds of ignition troubles, that when one is unable to find the particular source of trouble at once, the only thing to do is to begin at one end of the ignition system and make a series of tests in regular order. If, from all appearances, the spark plugs are at fault, begin with them. Any moisture on the exposed part of a porcelain will often cause the motor to misfire. Some car owners on a rainy day will grease the porcelains with vaseline.

If the spark plugs are found to be in good working order, next examine all of the wiring and the terminal connections. Then, open the distributor case and inspect for dirt or carbon dust. Or it may be that the misfiring is caused by the contact points being pitted. Also see that the tappet spring has not weakened or broken. Grease or moisture on the surface of the distributor housing often causes misfiring for the reason that the high tension current skips across the surface of this foreign matter instead of going through the regular channels.

Proper setting of the spark plug points is a very important thing that is often overlooked, the result being that some other part of the ignition system is blamed, when the truth of the matter is that the distances of the spark plug gaps are producing the trouble. A gauge should be used instead of guessing at the distance.

**A Knock Detector**

It is a very simple matter to make an excellent knock detector out of an old baking powder can and a piece of 3-16-inch cold rolled steel, or drill rod. Thread the rod at one end for about an inch, then drill a hole in the center of the bottom of the can to receive the rod. Thread a nut onto the rod, place a washer against the nut, insert the rod into the hole in the can and fasten it into position with another washer and nut. As a final operation, solder the lid of the can into position and the device is complete. To use it, hold the can against the ear and the rod against the motor.

**Oil Leakage**

It is of course very wasteful if oil drips from various parts of the car, and not only this, but it is sure to get on the clothes and particularly the shoes. No housewife wishes to have this carried in and smeared on the rugs.

Leaks usually occur at the bolt holes in the oil pan, though quite often they are due to a cracked or broken gasket. From the frequent drawing up of the bolts in the oil pan, it may become sprung, closing tightly at the bolt holes and remaining open at other points, so that it prevents the gasket from making a perfect seal.

Worn valve tappets can also cause a leak, as the oil may be drawn up from the crankcase through the valve tappet guides. The source of a leak cannot always be determined by the point from which it drips, as oil, just the same as water, will usually flow to the lowest point before dripping off.

**How to Apply Fuller's Earth**

The application of fuller's earth is a remedy to overcome the failure of the clutch or brake to take hold properly, when the trouble is due to an accumulation of grease on the linings. The fuller's earth will dry the oil.

However, the difficulty is to distribute the powder evenly over the surface of the linings, as these surfaces are usually difficult to reach. One good method is to use a powder gun, such as is used for spreading insect powder. Another way is to use an ordinary oil can filled with a mixture of gasoline and fuller's earth. The gasoline has a tendency to cut the grease and soon evaporates, allowing the powder to spread evenly over the surfaces of the linings. Be sure that the mixture is not too heavy, or it will not spread evenly. Also shake it frequently so that the powder will not settle at the bottom of the can. When fuller's earth is not on hand, ordinary talcum powder can be used as a substitute.

**DeSable and Vicinity**

Mrs. John MacDonald, Victoria, is visiting friends in De Sable.

Mr. Fred Campbell, De Sable, has purchased a new Chevrolet car.

Miss Catherine Murray, Bonshaw, spent the week end in De Sable.

Mrs. Patrick and Mrs. Grant are spending a few weeks in Hampton.

Miss Beatrice MacKay, De Sable, is visiting friends in Lower Freetown.

**For Insect Bites**

If you get bitten up with mosquitoes, black flies or other insects, Absorbine, Jr., will stop the itching at once, reduce the swelling and inflammation and prevent any danger of infection.

This famous liniment and antiseptic cools, heals and soothes the affected parts. It is an ideal "first aid" when camping, motoring or on vacation. Absorbine, Jr., is not greasy, does not stain the skin and has a pleasing odour. Be sure you include a bottle in your outfit. \$1.25—at your druggist's. Hospital Size \$2.50.

**Absorbine Jr.**

**REVOLUTIONARY IN 1924—STILL MORE SO TODAY**

"It was inevitable that Chrysler should attract a degree of scientific interest accorded no other car in the past fifteen years. + Engineers, naturally, were first to appreciate that Chrysler, while adhering strictly to soundest principles of design, is a distinct departure from previous motor car practice and performance. + They recognize in Chrysler an advance in automobile engineering as revolutionary as the development of the X-ray in medicine."

—Advertisement April 19, 1924



**HOW HAS CHRYSLER DONE IT?**

When an unknown motor car sets out—as Chrysler did—to grasp the leadership of a great industry, and with the speed of a meteor, sweeps to a foremost position in popularity and sales, it must possess extraordinary quality and ability.

When the first Chrysler car was placed on exhibition five years ago, the whole industry looked in amazement at what Walter P. Chrysler had accomplished. Within four years, Chrysler had leaped to third place in the industry.

How has Chrysler done it? What is the secret of this success? Simply that Chrysler gave in the beginning—each year since has given increasingly—and today gives in still greater measure—not only a finer grade of basic quality but a higher order of performance, beauty, style, power, acceleration, safety, comfort—all at most reasonable prices.

Such sweeping success must prove inevitably to the buyer of a Chrysler car today that he can count on the most advanced, the soundest, the safest and the most satisfying motor transportation his money can command. Let us prove these facts in a demonstration.

CHRYSLER "75"—\$1985 to \$3050—Eight Body Styles. CHRYSLER "65"—\$1325 to \$1460—Six Body Styles. All prices f. o. b. Windsor, Ontario, including standard factory equipment (freight and taxes extra).

**CHRYSLER**

CHRYSLER MOTORS PRODUCT

**Provincial Motors Ltd.**  
224 Great George Street Phone 421

THE CANADIAN-BUILT CHRYSLER FOR CANADIANS

Miss Erma Inman, R. I., is visiting friends in Victoria and other places.

Miss Annie Matheson, Travellers' Rest, is visiting friends in Argyle Shore.

Mr. and Mrs. Joseph MacQuarrie, Lowell, Mass., were recent visitors to Argyle Shore.

Mr. Walter Beer and Mr. Basil Holm, De Sable, recently paid a visit to the Brae.

Mr. Henry Pedersen and Mr. Donald MacLean, De Sable, were recent visitors to Rustico.

Mr. Colin MacKay, East Bideford, is visiting in De Sable, the guest of Mr. and Mrs. Hector MacKay.

Miss Elizabeth Ferguson, Hampton, is spending a few days with her sister, Mrs. Donald MacPhail, Argyle Shore.

Mr. James Mullins, Mr. and Mrs. Merley Mullins, have returned to their home in Tryon, after spending part of the summer in De Sable, where Mr. Mullins operates a lobster factory.

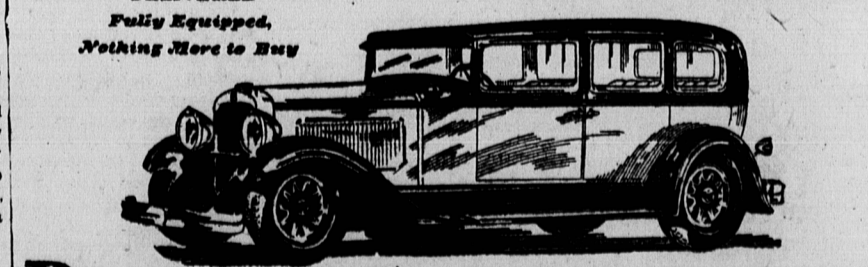
De Sable school closing was held in the schoolroom on June 29th. The day being stormy there was a poor attendance. The pupils were examined in their different classes by the teacher, Miss Rose MacDougall, assisted by Miss Mary MacKay, and their prompt answers showed a careful year's work. After the different classes were examined an interesting programme consisting of recitations and dialogues was carried out by the pupils. At the conclusion prizes were distributed to the pupils by the teacher. All present were then treated to candy. The people of this district regret very much the resignation of Miss MacDougall who has taught two years in this school, but we all look forward to her return as teacher in this school some time in the near future.

**NASH "400"**

Leads the World in Motor Car Value

Delivered, Fully Equipped Prices of 23 "400" Models, \$270 to \$3200

including Touring, Roadster, Coupe, Cabriolet, Victoria and Sedan Models



**PRICED TO GIVE YOU GREATEST VALUE**

CONSIDER the delivered, fully equipped price of this charming Nash "400" Sedan, and you'll see immediately it is a car you certainly should consider, when you get ready to buy.

For here, at a delivered, fully equipped price much lower than you would expect to pay for a car of its size and character, is an Advanced Six "400" Sedan with the Twin Ignition, high compression, valve-in-head, 7-bearing motor—with the beauty and style that have made the "400" a heavy favorite among all the year's new cars—and with a host of other costly-car features never available before in this price field.

Such features, for instance, as Bijur Centralized Chassis Lubrication which oils 29 chassis points at the pressure of a pedal. And alloy steel springs individually designed for its size and weight, correlated with Houdaille, double-action, outward-mounted, hydraulic shock absorbers. And the "world's easiest steering!"

These are only a few of the features of this Nash "400", but they give you an idea of its greater value and the extraordinarily fine performance you may expect from it.

The delivered, fully equipped price on this, and on all "400" models is lower, for the simple reason that all this equipment—Bijur Centralized Chassis Lubrication, Houdaille hydraulic shock absorbers, bumpers, spare tire lock, and tire cover—is installed at the factory and included in the factory price. Some dealers charge as much as \$50 to \$60 extra for bumpers alone.

**NASH MOTOR SALES**  
CHARLOTTETOWN AND SUMMERSIDE

**Kayser Square Heel medium service Stocking \$1.39**

All the good colors are offered in this one. It's a very lovely line, of medium service weight, made with all the perfection you associate with the name of KAYSER. \$1.39

**Moore & McLeod Ltd**