



Spinning and Weaving

Send me your wool to be spun into yarn. 25 cents for single and 28 cents for double. Sizes, fine, medium and coarse. Send by parcel post or freight. Pay freight on 100 lb. lots. Weaving done with wool warp and double width suitable for blankets. All white except border where grey may be used. Wool must be clean. Put shippers name and address on all parcels and owners name and instructions inside otherwise I will not be responsible for losses. Send early.

W.M. LANDRIGAN, Souris, P. E. I. 3588-5-4-tuehursat4mos.



BINDER TWINE FOR 1929 CROP

2 carloads just received. We are sole distributors for P. E. Island for the celebrated and well known

"Silver Leaf" Brand Manufactured by the BRANTFORD CORDAGE CO., LTD., of BRANTFORD, ONTARIO.

Wholesale and Retail Sold in both large and small quantities. Every ball guaranteed to give the best of satisfaction. Send us your order.

FACTORY PRICES, FREIGHT PAID. CARTER & CO., LIMITED.

SHARPLES SUCTION FEED SEPARATORS

Capacities of Machines 350, 500 and 700. SELLING AT THE LOWEST PRICES

Repair parts for all Sharples Machines on hand. J. LESTER DOUGLAS, 39 Queen Street, Charlottetown, P. E. I. 7480-8-22-61.

PEERLESS FOX NETTING



WHAT WE HAVE WE'LL HOLD 'It's Better to be Sure Than Sorry'

Your Foxes are the most profitable investment that you have. Are you going to lose them, by using any other netting than Peerless? 'Certainly not.' 'Why?'

"Because," you know at once knowing that the best "QUALITY NETTING" is protecting your Foxes. This netting is GALVANIZED before and after being woven. Hangs flat without sagging or sagging and makes a perfect fence. Can be erected by an "AMATEUR." SPECIALLY MADE FOR US. OUR PRICES ARE THE BEST ON THE ISLAND.

McGOWAN'S LIMITED Killarney The Rogers Hardware Company, Ltd.

NEWSY FARM NOTES

By Agricola

THE MILK COW AGAIN

A writer in the "Rural New Yorker" gives the following poetic review of a good milker's points. "She's long in her face, she's fine in her horn, she'll quickly get fat without cake or corn; She's clean in her jaws and full in her chine, She's heavy in flank and wide in her loin; She's broad in her ribs, and long in her rump, has a straight flat back with never a bump; She's wide in her hips and calm in her eyes, She's fine in her shoulders and thin in her thighs, She's light in her neck and small in her tail, She's wide in her breast and good at the pail. She's fine in her bone and silky of skin, she's a grazer's without and a butcher's within."

LIME AND ACID SOIL

A short note in the "The Maritime Farmer" gives information that will prove profitable to those whose land is of the acid type. Several years ago runs the paragraph—John Randall,

Canadian Government Merchant Marine Limited

FOR SALE BY TENDER Sealed tenders will be received by the undersigned for the purchase of the following steamers, tenders to be used as tug-boats in the respective vessels in the service of the Canadian Government. "CANADIAN OBSERVER" 3,982 tons—Built 1920. "CANADIAN ROVER" 3,920 tons—Built 1920.

Ascertained deadweight capacity 3,920 tons—Built 1920. "CANADIAN OBSERVER" 3,982 tons—Built 1920. "CANADIAN ROVER" 3,920 tons—Built 1920.

Conditions:—Tenders may be submitted for one or more of the five vessels. Tenders must be accompanied by cheque for five per cent (5%) of the amount of the tender, cheque to be made payable to the order of the Canadian Government Merchant Marine, Limited, and accepted by a Canadian chartered bank. The highest or any tender not necessarily accepted. Plans and specifications of steamers can be seen and particulars of delivery ascertained on application to the Under-Secretary, or Mr. E. G. Keeley, Pacific Coast Manager at Vancouver. Name of vessels must be changed before the transfer is completed. R. B. TEAKLE, General Manager, Canadian Government Merchant Marine, Limited. Aug. 27-31-Sept. 3-6.

Tudhope-Anderson Co. Limited

OK POTATO MACHINERY CO., LTD. Edmond's Building, Great George St., Charlottetown.

Our line includes the following at lowest prices for cash or terms. Farm Wagons, Harrows, Farm Engines, Plows, Spreaders, Cultivators, Separators, Ranges, Heaters, Furnaces. OK Sprayers, OK Diggers, repair parts stocked for all machines.

WE WELCOME EVERYBODY. W. E. DENNIS, Distributor for P. E. I. 7480-8-27-31.

MELOTTE SEPARATORS

None better, if as good. It has a record for clean skimming, few repairs, and long life. FARM ENGINES—Large and small. PUMP JACKS for deep or shallow wells. Second hand machines in stock. Get prices, they will interest you. Everything fully guaranteed.

JOHN H. GILL 173 Grafton Street Charlottetown

small colony, hedges, decided to try... Randall then had the soil tested... scattered plants were allowed to stand and produce seed, and next year it yielded two head of cattle per acre till the middle of August. The lesson in this is that it pays to lime the soil six months before putting in the clover seed.

"GO TO THE ANT"

"Consider her ways and be wise," said Solomon, nearly thirty centuries ago, and Prof. Arthur Thompson in a recent lecture at Goldsmith's Hall, London, Eng., further advises us of the social lessons to be learned from the study of insect communities. The ant-hill he regards as one of Nature's warnings. As an example of efficiency, division of labor, self-subordination, and loyalty it is admirable, but peering in one sees the seamy side. The work is done by more or less sterile, sex-repressed females.

In the hive of the honey bee, victim of extreme state socialism, one observes the sterility of the great majority, the short duration of life in the worker bees—a month or so during the summer season—the large number of unproductive but by no means idle males, and towards the season's end the cold shouldering of these drones which meant a massacre.

The idea of evolution, says Professor Thompson, is best studied in connection with natural history, and has done more than any other idea for the emancipation of man's mind.

TALL COTTON-GRASS

There has just been brought in a bouquet of this, the prettiest of our native cotton-grasses, for naming. Its scientific name is Eriophorum angustifolium, and it is found from Arctic Canada to Maine in cold swamps. The Cotton grasses, especially the hare-tail types are very ornamental as winter bouquets.

Control Couch By Cultivation

(J. M. MacKenzie, Dominion Experimental Station, Fredericton, N. B.)

The usual cultivation given land to prepare it for crops stimulates the growth of couch and for that reason it is one of the worst weeds in Eastern Canada.

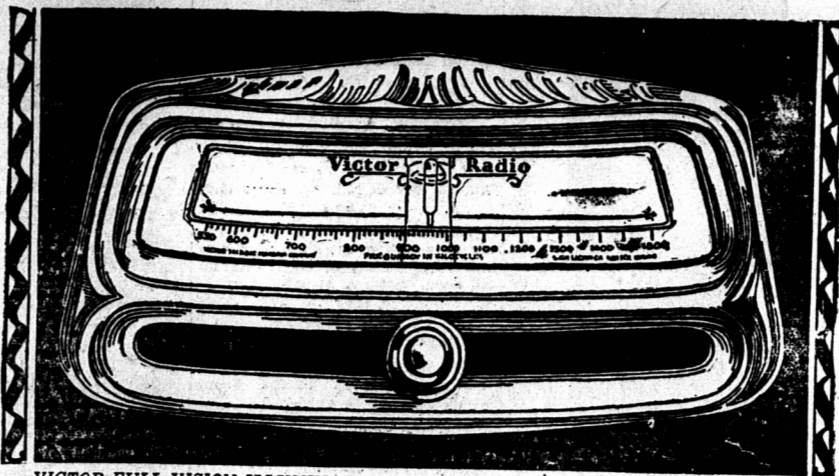
The results obtained at the Fredericton Experimental Station indicate that it is possible to eradicate this weed by after harvest cultivation. The best results were obtained after a hay crop, probably because this crop allows a longer period of after harvest cultivation.

In 1928, the hay on a number of rotation plots, which were badly affected with couch, was cut in July before the couch had a chance to ripen. The plots were ploughed on July 27th, to a depth of eight to nine inches. The furrow was thrown down flat and care taken to have the grass covered. The field was disked the same way it was ploughed on August 3rd, 6th, and 13th. The disk was set light the first time so as hot to turn the furrow, but each time it was set a little deeper. The disk was lapped each time so that the field was disked twice in going over it once. The field was harrowed with the spring-tooth, overlapped, on August 20th, and 27th, September 10th, 19th, and 26th, and on October 6th, and 15th. This harrowing kept the field free from couch during the entire season. This year some of the plots were sown with grain without ploughing, while other plots were ploughed and put in hoed crops. There was no couch in either set of plots. This treatment took considerable labor but it cleared the land of couch without the necessity of a summer fallow. It also indicates that if a former would select a field each year and do the work carefully he would in time clear his farm of this weed.

Minard's Liniment—The King of Pain. It should be remembered that practically all forms of ringworm of animal origin are liable to be contracted by human beings, and precautions for washing and disinfecting after handling animals should not be neglected.

RINGWORM

Ringworm is caused by a fungus or vegetable parasite which is under the crusts of scabs, and is present



VICTOR FULL VISION ILLUMINATED SUPER-AUTOMATIC STATION SELECTOR—ALL STATIONS VISIBLE—JUST SLIDE KNOB—AND TURN FOR MICRO-EXACT ADJUSTMENT.

Victor Just had to do this!

It was inevitable, this new and improved Electrola with the New Micro-Synchronous Victor Radio in one. Both bearing the world's best known trademark. Both for the usual price of one! \$375 complete.

WITH thirty years of absolute musical leadership, Victor was destined to give you the supreme musical instrument. The finest in radio and the finest in record enjoyment — an instrument with Victor's vast experience behind it . . . with Victor's enduring craftsmanship built into it . . . With Victor's unending performance ahead of it . . . at a price any one can afford.

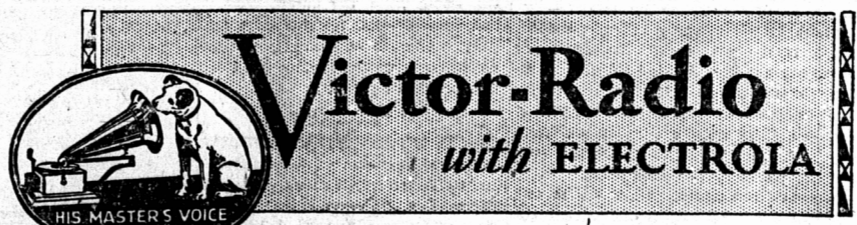
Never before was radio so easy to tune. The station you want is always before you, plainly and perfectly visible.

—This instrument is the dream of thousands . . . music from any source to suit every mood. Your kind of music when you want it. Radio or record—high notes or low notes in their proper proportion . . . bass deep and sonorous—high notes brilliantly expressive!

Equally brilliant an achievement is the low price — only \$375 for the entire instrument. The New Victor Radio may, of course, be had separately in a cabinet of exquisite design—for only \$255.

On extended payments. Hear them together—Radio and Electrola.

Go Today—to any Victor Dealer



VICTOR TALKING MACHINE COMPANY OF CANADA LIMITED, MONTREAL

WESTERN HARVEST IS WELL AWAY

WINNIPEG, Man., Aug. 26.—Harvesting operations throughout Western Canada are in all stages of progress, as some districts have just nicely commenced cutting, whereas others have finished with binders and are beginning threshing, according to the seventeenth weekly crop report of the Canadian National Railways.

Numerous districts in Manitoba now report a better grade of grain than was expected, and while rust conditions are found between Neepawa and Russell sub-divisions, only in Manitoba the whole of the West is exceptionally free from any damage.

Some districts in Manitoba report threshing complete, while in others threshing will be in full swing next week. Along the Carman sub-division Garnet wheat is yielding from twenty to twenty-five bushels.

Barley will run about thirty bushels, oats from twenty to forty bushels, and rye thirty bushels.

The Swan River Valley reports that wheat yields will vary from twelve to twenty-five bushels, with oats sixteen to thirty-five bushels and rye twenty to thirty bushels. Hot dry weather has been prevalent throughout Saskatchewan and grain cutting is now general.

The northern territories expect yields of from fifteen to twenty bushels on summer fallow and from ten to fifteen bushels on stubbled land. Southern Saskatchewan is not so fortunate as central Butte, Gravelbourg and Bengough sub-divisions, are only expecting out-turns from five to seven bushels of wheat. Rye has withstood the drought very well,

and yields varying from eighteen to thirty bushels are now coming down the grain spout.

The Beechy Elrose and White Bear sub-divisions expect wheat yields of from ten to twenty bushels. The minimum figures of these variances will form on stubbled in grain yields whereas the maximum figures will be from summer fallow and sweet clover and brome grass feeds. In the Peace River cutting has started, and will be general next week. Weather conditions for the past seven days have

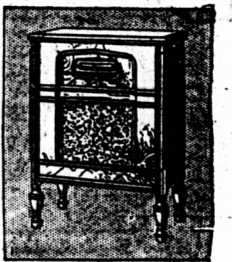
been . . . ripening has been . . . Grain prospects, however, are up to previous expectations, and bushel yields will not be uncommon.

In Alberta heavy rains were experienced along the Viking, Camrose, Vegreville and Coronado sub-divisions at the beginning of last week, and harvesting was delayed for from two to three days. Stubbled crops in these territories will not be heavy, but wheat on summer fallow and sweet clover sod will be in several

which exceed twenty bushel yields. The Athabasca sub-division was visited by a hail storm which did damage varying from only slight to 100 per cent. Twatinaw district was the worst hit, the Drumheller sub-division excess stubble wheat to yield from four to six bushels per acre, whereas summer fallow will yield from ten to fifteen bushels. Coarse grains will also show great variations in yield as some oats are not fit to cut, whereas others will run from twenty to thirty-five bushels.



VICTOR RADIO CONSOLE R-37 \$255 Complete with tubes



VICTOR RADIO-ELECTROLA R-45 \$375 Complete with tubes

Features of VICTOR'S Greatest Instrument

- 1 A remarkable new and improved Electrola that reproduces V.E. Orthophonic Records with thrilling new power—depth—color. 2 Micro-synchronous balance: every element in micro-exact resonance at any frequency. Selective and sensitive to a super-degree. 3 Improved radio-circuit developed by Victor—unprecedented fidelity. 4 Two new Radiotrons 245 in the circuit; increased volume—no distortion. 5 Exclusive super-automatic full vision station selector as illustrated. 6 Three distinct units — all scientifically shielded. Quickly removable for inspection. 7 Marvelous new all-Victor electro-dynamic speaker —re-creates music from the air or record—beautifully! . . . True trebles—true bass notes. 8 Exquisitely designed compact Victor cabinet. 9 Trademarked "His Master's Voice." The world's most famous guarantee in three words and a picture.

FLY-TOX

THE SCIENTIFIC INSECTICIDE DEVELOPED AT MELLON INSTITUTE OF INDUSTRIAL RESEARCH BY REX RESEARCH FELLOWSHIP



KILLS MOSQUITOES . . FLIES . . MOTHS ROACHES . . BED BUGS . . ETC.

The makers of FLY-TOX raise a vast army of insects to the highest point of vigor, and then place them in the FLY-TOX "Chamber of Death" to prove with absolute certainty the killing qualities of FLY-TOX before it is sold to you.

Less than a teaspoonful of FLY-TOX is used in a test. Small picture shows FLY-TOX manager watching a test. Within 5 minutes hundreds of insects inside will be dead. FLY-TOX is sure . . . and harmless to people.

THERE IS ONLY ONE FLY-TOX . . . REFUSE TO ACCEPT SUBSTITUTES