

A LOCAL BUSINESS INSTITUTION THAT ACHIEVED MARKED SUCCESS

A Business that is doing much to Reduce Foreign Competition by Giving Better Values at Home and a Far Superior Service--R. T. Holman, Limited, sends their store to your Door by Issuing a Semi-Annual Catalog that Includes Representations from every Department and Establishes a Precedent in Value-giving.



J. S. HINTON, Vice Pres.

The services of Mr Hinton were engaged by the late R. T. Holman, a quarter of a century ago, after four years of business training in the Stanfield Woollen Mills as Confidential Clerk and Supervisor of the Financial and Credit Department. He was elected vice-president of the Company and appointed joint manager of the business some years ago.

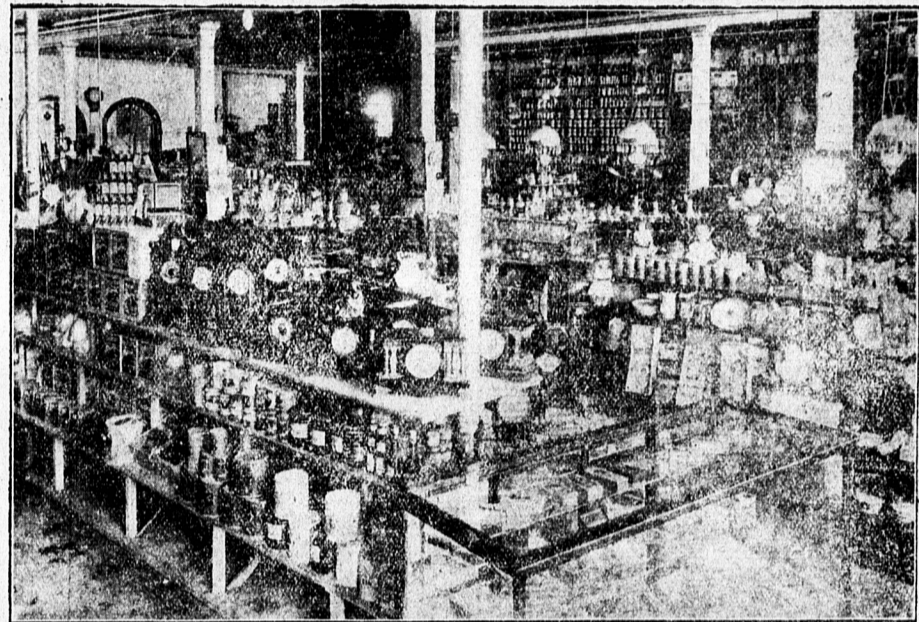


J. L. ROY HOLMAN Treas.

Mr Holman is the youngest director on the board of Management, and has made a specialty of the hardware business, which, under his supervision has become the largest and most up-to-date in the province.

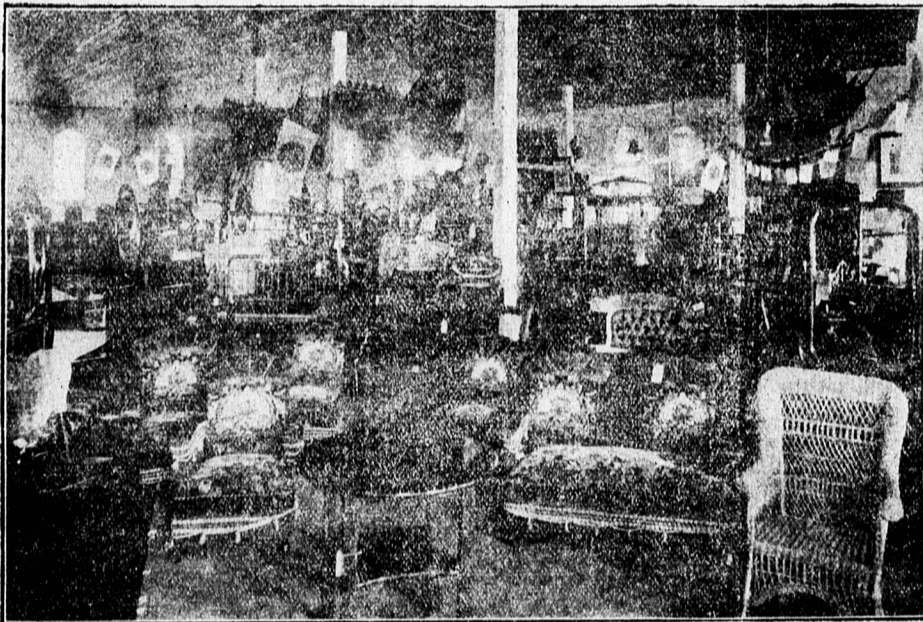
pressed with the many changes and improvements that have been made in both its exterior and interior. The accompanying illustrations will give you an idea of its appearance, and a knowledge that it has over sixty thousand square feet of floor space will give you an idea of its size. Entering through the east door takes you directly into the large and well stored grocery department, where a very large proportion of their business is done. On the right of this entrance is the Fancy Goods and China department, which has a reputation and importance known all over the Province. The illustration shown will give you an idea of the extent of this section. In this same illustration you get a glimpse of one of their most important departments--Hardware. This part of their business has had the personal attention of Mr. Roy Holman, and under his care and particular attention has taken its place as the best equipped, stocked and managed hardware establishment on P. E. Island. Their stove show room occupies the south-east corner and the display of the Famous Base Burner, the renowned Sask-Alta and Kootenay Ranges

makes it very noticeable to all. At the rear of the hardware and china departments is the office, where every mail order is assorted, inspected and passed into the competent hands of the department managers. The number of employees in the office has been greatly increased, so that there will be no delay in getting orders filled and mailed the same day as they are received. Here in particular is where they have an immense advantage over the competition of outside mail order houses. You can have your order filled and the goods in your possession in the time that it takes your order even to reach the foreign mail order office. Promptness and Guaranteed Satisfaction is the inducement they offer their Mail Order patrons. From here we enter the Dry Goods section, which with its many departments occupies the entire western half of the building and is under the direct supervision of the competent Mr. Walker. The first department, which at this particular season, is thronged with busy buyers, is assigned to Furs, and an immense display they certainly show. In this same section is shown house furnish-



This picture shows a glimpse of the grocery, crockery, fancy goods and hardware departments. Chinaware, cut glass, silverware, etc. are also kept in this section of the store, which makes it a very interesting spot to the buyer and the visitor alike.

ings, which at this season does not have removed the congestion that was buying public, and coupled with assume the prominence that it puts on when Winter is on the wane. Ready Made Clothing and Gents' Furnishings departments. All these have now been extended and have received a stimulus that has much to do with the material advance that the firm is enjoying. The Millinery Department is on the second floor and is now in the midst of the busiest season it has ever experienced. The entire upper floor, comprising some fourteen thousand square feet of floor space is used for furniture, and as a show room that would be the envy of any department store anywhere. The catalogue gives a comprehensive idea of the quality of the furniture that they carry. We here saw the Hercules Spring, which they have demonstrated at the different P. E. Island Exhibitions, as shown in the illustration and which carries a 25 year guarantee of satisfaction. The Island's Biggest, Best and Busiest Store is a phrase that this firm has made their own, and made it without fear of contradiction. These three words mean much to the



The above illustration shows a section of the furniture show rooms. This section takes over 14,000 square feet of floor space.

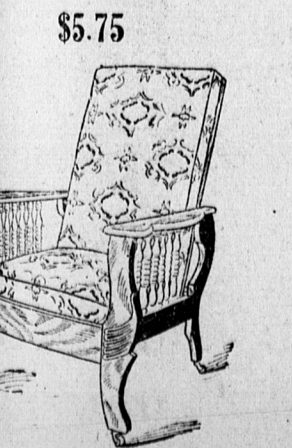
man, Limited, Summerside, facilities at hand for the

business. The rear warehouses have also their railway switches and, consequently, Island produce can be handled expeditiously and cheaply. The ice house and cold storage plant are also conveniently situated. Their extensive Brick Warehouse is a direct feeder to their main store and much of the heavy goods is kept there, which is most convenient for the buying public. It appears to be only the matter of a short time, if their business continues to show its customary yearly increase, till this warehouse will be joined to the main store, making a premises with more frontage than any mercantile establishment in Canada. The store itself, however, is what commands our attention, and we are particularly im-

Power and Bargain Offerings Displayed by HOLMAN'S

Copied from Catalog--
Luxurious Morris Reclining Chair
Our price **\$5.75**

Morris Reclining Chair, frame of rich golden oak finish, carved arms and legs, with neat turned spindles, back and seat upholstered in best quality leathers in assorted colors, brass attachment and rod, and is the biggest value ever in a Morris chair. Complete with castors.



Morris Chair, made of selected hardwood with rich golden finish, has brass rod attachment you to adjust back to 3 different positions. It is upholstered in black imitation leather and back, complete with castors.

\$5.00

Morris Chair as above, upholstered in fancy velour, in assorted colors. Price **\$6.00**



No. 102--This is a perfectly finished dinner set, the ware is semi porcelain, pure white body with a delicate decoration in delicate shades of green. Every piece is full size and well shaped and consists of the following: 12 butter chips, 12 tea plates, 12 soup plates, 12 dinner plates, 12 fruit saucers, 12 cups and saucers, 1 platter 10 inch, 1 platter 14 inch, 2 covered vegetable dishes, 1 gravy boat 1 pickle tray, 1 slop bowl, 1 cream jug and 1 oval baker. Price for complete set of 95 pieces. **\$5.00**

Best English Semi Porcelain, in neat rose pattern, every piece stippled and gilt traced, good clean white ware with extra heavy glazing and is one of the best values we have ever offered. It consists of 12 cups and saucers, 12 bread and butter plates, 12 dinner plates, 12 tea plates, 12 soup plates, 1 slop bowl, 1 gravy boat and tray, 2 vegetable dishes, 12 fruit dishes, 1 10-inch platter, 1 14-inch platter, 1 covered sugar bowl, 1 cream pitcher, 8-inch salad bowl. Price **\$9.00**

Copied from Catalog--
A NEW FEATURE of the New Winner Washer is the slave leg which does away with leg socket and shaky legs, washer is always firm and will last years longer.

THE GEARING is very simple, consisting of two new style cogs, it operates so as to raise and lower the dasher, this forces the air through the clothes and thus washes cleaner and better. The simple gear does not get out of order.

THE ROLLER BEARINGS on the shaft carry all the weight, making the Washer the easiest running washer made.

THE TUB is constructed of cypress with three heavy hoops, the cover is double thick with crosswise grains, so it cannot warp, it is large and allows plenty of room for wringing and putting in clothes.

THE WASHBOARD. The inside of tub has corrugations which form the washing surface.

NEW WRINGER STAND. This is specially constructed and is a good improvement as all water runs back into tub.

THE WINNER, has been well tested and is the easiest, cleanest and best made washer on the market. No 2 **\$5.85**
Cog Covers extra **25c**



Copied from Catalog--
Four Big Values in Men's Coat Sweaters--Note them.

No. 45--Men's Heavy Ribbed Coat Sweaters, colors navy with gray, gray with navy or gray with maroon, medium or large sizes, with white pearl buttons. Big value at each... **65c**

No. 1--Men's Heavy Ribbed Coat Sweaters, in plain gray, brown or maroon, medium large sizes with white pearl buttons, each... **85c**

No. 600--Men's Coat Sweaters, in plain gray, plain navy, gray with navy trimmings, gray with navy, gray with taupe, or navy with cardinal in small and medium sizes, each... **\$1.00**

No. 040--Men's all Wool Coat Sweaters, with pockets, in medium large sizes, colors silver with cardinal, silver with navy, and navy with cardinal, each... **\$1.50**

Copied from Catalog--
No 1--Men's Raccoon Coats, of superior quality, well furred and dark with deep roll collar, a line that cannot be repeated at anything near the price we are asking. Sizes 38 to 44 chest and 50 inches long. Very special at each... **45.00**

No 100--Men's Raccoon Coats, of choice skins, well made and trimmed in every particular, sizes 40 to 48 chest, 50 inches long. Good value at our price... **55.00**

A LEADER--

Good Wearing Warm Fur Coats **\$18.75**

No 3--Men's Dark Frown Fur Coats of thick close fur that will stand the hardest wear, and are of good appearance. Have deep warm roll collars. Sizes 40 to 48 chest measurement, 50 inches long. A big leader at our price... **\$18.75**

Columbia Beaver Fur Coats \$22.50

No. 102--Men's Columbia Beaver Fur Coats. Very similar color to the old Buffalo fur coats, made of dark brown fur, extra thick. A very warm coat--one that retains its good appearance, and is guaranteed for wear, sizes 40 to 48 chest measurement, 50 in. long... **\$22.50**

PLEASE STATE SIZE

