

POSTPONED MEETING

The postponed Annual General Meeting of the John Agnew Fur Farms, Limited, will be held in the Board of Trade Rooms at eight o'clock, Monday, the 31st March.

FARM FOR SALE AT FREDERICTON

Containing 108 acres land, 80 acre balance hard and soft wood. House and barns in good repair. If not sold privately by April 15th, will be offered by auction.

FOR SALE

Valuable shore farm at Long Creek, Lot 65, containing 10 acres—47 clear, in good state of cultivation, with dwelling house and out buildings; near to school, churches and shipping facilities; seaweed on shore, mussel mud within two hundred yards.

AUCTION SALE

Of 60 acres of choice land, situated on the Union Road, 3 1/2 miles from Charlottetown. Formerly the property of the late Owen Connolly. This property has a brook of water running through the centre of the farm.

AUCTION SALE

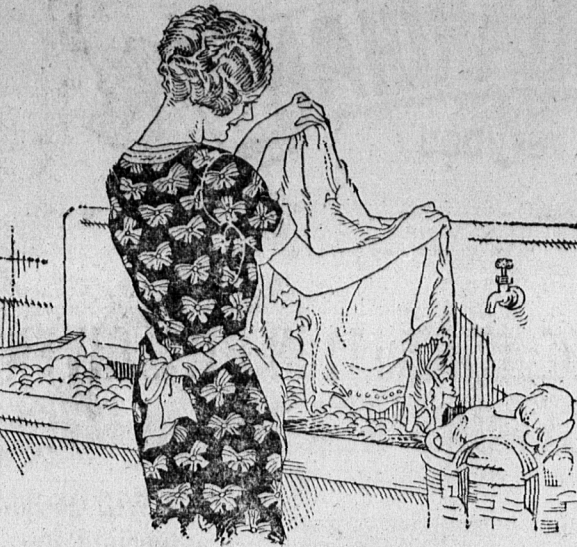
I am instructed by John D. McKenzie, Jr., Hartsville, to sell by public auction on his premises on March 31st at 1 o'clock p. m. sharp, the following stock, crop and implements:

Big Clearance AUCTION SALE

At York Point on Thursday, March 27th at one o'clock sharp of Stock, Crop, and Implements as follows: Having disposed of my farm I will sell on above date the following:

Auction Sales

The Guardian Job Department is well equipped to turn out sale bills. Any person having an Auction sale should advertise in both ways.



Making wash day pleasant

The hardest part of wash-day, rubbing, rubbing, rubbing, has given way to the new method of soaking the clothes clean with Rinso.



Rinso is sold by all grocers and department stores. Rinso MADE BY THE MAKERS OF LUX



Save the surface and you save all. Paint & Varnish. The GRAND STAIRCASE. Of course Dad's proud of his handiwork, and mother is proud of the finished appearance of the front hall, and paint and varnish were all that was necessary to keep the stairway fresh and new.

Paint & Varnish. SAVE THE SURFACE CAMPAIGN. 121 Bishop Street, Montreal. A co-operative movement by Paint, Varnish and Allied Interests.

Canadian National Railways. FROM COAST TO COAST Travel By National Lines. 2 ALL STEEL TRAINS 2 FROM HALIFAX TO MONTREAL. "OCEAN LIMITED" (Daily) "MARITIME EXPRESS" (Daily Except Sunday)

FORTUNE'S FOOL

"Beggars may not choose, ma'am, I go where I can find employment. Besides, it is not as bad as you imagine." She drew a step or two nearer, so that she was almost beside him. "Here in this room," she insisted, softly. He looked up at her, still uncomprehending. Then, as he observed the shy smile with which she sought to dissemble her agitation, the truth broke upon him at last.

Sage Tea Turns Gray Hair Dark

That beautiful, even shade of dark, glossy hair can only be had by using a mixture of Sage Tea and Sulphur. Your hair is your charm. It makes or mars the face. When it fades, turns gray or streaked, just an application or two of Sage and Sulphur enhances its appearance a hundredfold.

Notice Re Fishing And Shooting

Fishing and shooting on the property known as Henry's millpond is strictly prohibited and any person caught trespassing will be prosecuted.

TENDERS

PRINCE EDWARD ISLAND FERRIES. Rocky Point, Queen's County, York Point, Queen's County, Cranberry, Queen's County, Ellis River, Prince County.

HIGHWAY IMPROVEMENT

Pursuant to the requirements of the Canada Highway Act, Sealed "Tenders for Materials" will be received by the Undersigned at 2 o'clock noon on Monday, April 1, 1924, for the supply of any or all of the following materials, viz. Cement, Steel Reinforcing, Iron Rods, Sand, Gravel or Broken Stone, Corrugated Iron Culverts according to the terms set forth in the Specification for same which with forms of tender may be seen at the Office of the Provincial Engineer, Charlottetown, Prince Edward Island.

RICE POINT SCHOOL

The following is the standing of Rice Point School for the month of February. Grade X.—1. Selma Currie. Grade IX.—1. Jonima MacLaine. 2. Newton Taylor.

CUMBERLAND HILL SCHOOL

Honour Roll of Cumberland Hill School for February:

Century Salt. For either cooking or table use Century Salt is really excellent. The superior vacuum processes used account for its fine flavor, snowy whiteness and matchless purity.

Win \$1,500



How Many Objects in This Picture Begin With the Letter "B"

The above picture contains a number of objects beginning with the letter "B". Just take a good look at it—there are all sorts of "B" words. Nothing is hidden. You don't have to turn the picture upside down. Make a list of all the objects in the picture, the names of which begin with the letter "B". You can easily see such objects as "boy", "bench" and "bat". The others are just as easy. Have the whole family join in—see who can find the most. Fifteen cash prizes will be awarded for the 15 best lists starting with the letter "B" will be awarded first prize; second best, second prize, etc.

JOIN IN THE FUN—This Picture Puzzle Game can be enjoyed by everybody—young and grandfathers all join in with the children in playing this game. It is a game that's equally as interesting to all. Oh, no, you're not too old, and it's not too easy for you. You'll find that out after you have tried it for a few minutes. In fact you are apt to be surprised to find the children spotting "B-Word" objects much easier than you do. It's a delightful game—a carnival of fun, you might say. The fun comes when old-timers are playing and you are trying to see who can find the most. Now remember, no one is too old to enjoy this game. Here's a chance for the young to study, the middle-aged to think and the old folks to brush up. It's equally interesting, educating and fascinating. Nothing hard—a little different, that's all. Look it over, talk it over and then all get out a pencil and paper and have a jolly good time.

Open to All—Costs Nothing to Try

The Morning Chronicle and The Evening Echo invites you, Mr. and Mrs. Reader and family, and all your friends, to difference whether you are six or sixty years old. Here's your chance for some family fun. You'll find that out after you have tried it, and you'll say it's "GREAT!" The most fun you have had in a long time. Write down the "B-Word" you have in mind right NOW! Then study the picture for more and when your list is made up send it to The Chronicle Publishing Co., Ltd., "Puzzle Manager", and try for the big cash prizes.

CASH PRIZES

Table with columns: Prize No., Prize Amount, and Prize Description. 1st Prize \$1500, 2nd Prize \$500, 3rd Prize \$250, 4th Prize \$100, 5th Prize \$50, 6th Prize \$25, 7th Prize \$10, 8th Prize \$5, 9th Prize \$2, 10th Prize \$1, 11th Prize \$1, 12th Prize \$1, 13th Prize \$1, 14th Prize \$1, 15th Prize \$1.

OBSERVE THE RULES

- 1. Any man, woman, girl or boy residing in the Maritime Provinces who is not an employee of The Morning Chronicle or Evening Echo, or a member of an employer's family, may submit an answer. 2. All answers must be mailed by April 1st, 1924. 3. All subscriptions must be in by April 1st, 1924. 4. Answers should be written on one side of the paper only and numbered consecutively 1, 2, 3, etc. 5. The name of the sender and address on each page in the upper right hand corner. 6. Only words found in the English Dictionary will be counted. Do not use hyphenated, compound or obsolete words. Use either the singular or plural, but the plural is used, the singular cannot be counted and vice versa. 7. Words of the same spelling can be used only once, even though used to designate different objects. The same object can be named only once; however, any part of the object may also be named. 8. The answer having the largest and nearest correct list of names of visible objects shown in the picture that begins with the letter "B" will be awarded first prize, etc. Neatness, style, or handwriting having no bearing upon deciding the winners. 9. Candidates may cooperate in answering the puzzle, but only one prize will be awarded to more than one household; nor will prizes be awarded to more than one of any group outside the family, where two or more have jointly participated in the "B-Word" puzzle. 10. All answers will receive the same consideration regardless of whether or not a subscription for either The Morning Chronicle or Evening Echo is sent in. 11. There will be three independent judges, having no connection with the Morning Chronicle or Evening Echo who will judge the answers submitted and award the sending in their list, agree to accept decision of the judges at final and conclusive. 12. The judges will meet on April 26th, 1924, and the announcement of the prize winners and correct list of words will be published in both The Morning Chronicle and The Evening Echo as quickly thereafter as possible. 13. Subscriptions (both new or renewal) by mail or by cheque must be received by the publisher on or before the 15th of April, 1924. 14. A new subscriber must be accompanied by a receipt from the Morning Chronicle or The Evening Echo dated March 15th. 15. No subscription for less than the regular advertised rates of The Morning Chronicle and The Evening Echo will be accepted to count in the Puzzle Game. No extra amounts allowed to agents.

You can win \$1500

Easy to Win \$1,500—Here's the Way

It costs nothing to take part and you don't have to send in a single subscription to win a prize. If your list of "B-Word" is awarded FIRST PRIZE, by the judges, you will win \$1500; but if you would like to win more than \$1500, we are making the following special offer, whereby you can win bigger cash prizes by sending in yearly subscriptions with remittance to cover, to either The Morning Chronicle or The Evening Echo, Halifax, Nova Scotia. This is the plan: Should the judges award your answer to the "B-Word" Picture Puzzle first prize, and you have sent in NO subscriptions to either The Morning Chronicle or The Evening Echo, you will win \$1500. (See first column in prize list). If your answer is awarded FIRST PRIZE by the judges, and you have sent in ONE yearly subscription to The Morning Chronicle (new or renewal), you will win \$2000. (See second column in prize list). Or, if your answer is awarded FIRST PRIZE by the judges, and you have sent in TWO yearly subscriptions to The Morning Chronicle (two new or ONE new and ONE renewal), you will receive \$1500 instead of \$1500. We will give extra amounts on all prizes in the same manner. If your answer is qualified by TWO yearly subscriptions (ONE new and ONE renewal), and you win second prize, you will receive \$1000, and so on down. (See fourth column in prize list).

Subscription Rates—Payable in Advance

Table with columns: By Carrier in Halifax or Dartmouth, By Mail, The Morning Chronicle, The Evening Echo, One Year, Two Year.

EXTRA LARGE PICTURE PUZZLE

MAILED FREE ON REQUEST.

RURAL ROUTE SUBSCRIBERS

ADDRESS PUZZLE MANAGER DEPT. A.

This offer applies to rural route patrons, as well as subscribers in cities and towns. If you are already receiving The Halifax Chronicle or The Evening Echo, your subscription will be extended from the present expiration. Send in a NEW subscription with your renewal, or two new subscriptions, and qualify for the big prize. This is an easy way to earn \$1500.00.