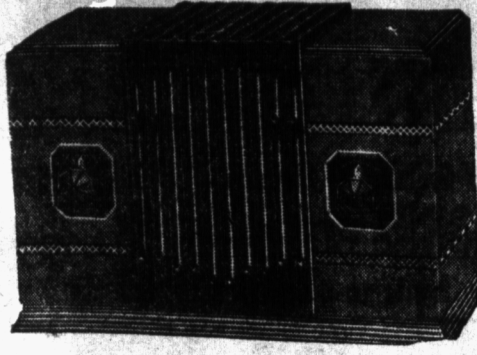


SENSATIONAL RADIO SALE FOR XMAS

Right in the middle of the Christmas Gift buying season we offer 85 new 1934 Radios. Our complete stock for this Big Sale. A model and a price to suit every purse. To please all the family all the year round get that new Radio for Xmas. Famous Rogers Majestic, Victor, General Electric, Lyric and Phonola Sets fully guaranteed and all A1 Radios. By special request we extend our offer of 10% EXTRA TRADE in allowance.

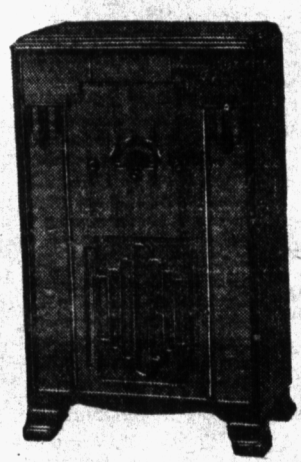


An Instant Success In Charlottetown THE "BIG LITTLE SET"

\$46.50 \$4.00 Now—\$4.25 Monthly—10 Months NO INTEREST

So great was the popularity of this truly amazing little Radio when we introduced it a few weeks ago that our large stock was soon sold out. We have, with great difficulty, secured a further shipment—A Gift which will delight all the family—Full toned—full powered. The national price is being advanced on December 10th to \$49.50. Our stock is limited—Come early.

PHONOLA CONSOLE



\$59.50 \$5.00 Now—\$5.45 Monthly—10 Months NO INTEREST

The full round tone of this thoroughly reliable Radio will please the most critical. Powered by 5 of the newest type tubes giving the equivalent of at least 7 tube performance. Very sensitive tuning ensures distant reception. Specially recommended as real good Holman Value. Handsome modernistic cabinet. Advanced Automatic Volume Control. Bang up to the minute. A solution to that problem!—A Phonola for Xmas.

HOLMAN'S LTD

VICTOR RADIO

WITH *Tona-lite* CONTROL

You See Everything but you hear only what YOU WANT TO HEAR

HERE, at last, is a radio with a system of variable colored lights which enables the eye to aid the ear in attaining perfect operation. Tona-lite means tuning the set visually so that distortion and impurities of tone are eliminated... controlling the volume visually... visual noise suppressor... and the "Hi-Lo" tone control, visual control of high and low notes independently. And remember—Victor Tona-lite for the first time in radio gives crystal-pure tone at even the loudest volume. Come in and operate it yourself.

ONLY \$24.50

SNAP—SNAP LYRIC Mantle Model A powerful compact superheterodyne You CAN afford this.

NO INTEREST \$1.00 Now \$1.00 weekly

Victor Radio Model R-30 with 10 tubes \$157

Charlottetown Store

This New VICTOR

What you're really looking in a radio is cabinet beauty and program! And that's what this Victor offers... and nothing else but! Of course it has 7 double-efficiency tubes... automatic volume control... Class "B" amplification... visual volume indicator... and tone control—but all those are in it for just one purpose! To give you programs... and make you like 'em! Come in and judge for yourself. Easy terms.

VICTOR RADIO R-37 with 7 tubes

MODEL R 37

6 TUBE (equal to 9) MANTLE RADIO

\$66.50 \$6.50 now \$6.00 monthly

10 Months NO INTEREST

Another product of Famous Victor—Rare quality built into every detail—Full Victor Tone... Mellow as Chimes... Clear as a Bell—Everything on the air reproduced with uncanny fidelity.

Announcement!

Also for this week only given with any model

FREE Aerial
FREE Ground Wiring
FREE Installation and Instructions

HEALTH

Work is just as essential to health as is food. A man can live without work while he cannot live without food, but living in the sense of existing, is far from being a condition of health and well-being. If a man or woman is to enjoy physical and mental health, he or she must have the opportunity to work and to gain that satisfaction which comes from doing the day's work.

The tragedy of unemployment, whether it concerns great or small numbers, no matter what the cause may be, lies in the frustrated desire of the vast majority of the unemployed to work. There is no greater punishment for those who are confined in penal institutions than to deprive them of the opportunity to work. In certain hospitals, we speak of occupational therapy, which simply means that creative work, with the satisfaction it brings, is recognized as a powerful agent for good in the treatment of patients.

Physical and mental health are closely related. Idleness means loss of health; work has much to do with our sense of well-being. A man may grumble about hard work and low wages, but he is nevertheless enjoying life, and part of his enjoyment is his right to grumble and complain.

It is a matter of common observation that certain forms of physical complaints, particularly those which have to do with the digestive system, are much more common when times are difficult and worries thereby increased. The reaction of the mind on the body on the mind is very definite, although not always clear.

These facts should not be forgotten when the problems arising out of unemployment are considered. Their solution has not merely to do with economics; the welfare of the nation is concerned because of the effects of these problems upon the health of the people. Unemployment does not cause disease, but it does threaten the health of the people because it takes away from them the opportunity to work.

Serious as this is at all ages, it is particularly so for the young people who are leaving school. If they do not become employed, their health will suffer because they will not have the opportunity to work, to develop good work habits, to become independent, and to experience

CANADIAN TURKEYS

MOVE FORWARD IN BATTALIONS TO UNITED KINGDOM

The 1933 turkey crop is on the move. Well-groomed and finished birds are being assembled, inspected, stamped, packed and delivered into refrigerator cars at more than three hundred points scattered over the prairie. For the most part the birds are destined for the Christmas trade in the British market where, judging from last year's experience in the disposal of 80,000 turkeys, the birds will find ready buyers at a good price.

The whole transaction of weighing, grading, inspecting and official stamping is accomplished in full view of the producers, the handlers or buyers and the Government Inspector. The assembling and shipping is done by farmers themselves chiefly through the Poultry Pool whose packers through years of experience have evolved an almost perfect system of handling at the assembling points.

The birds are brought to these points in all sizes and weights by the growers. They are then separated into grades according to their finishing and condition, and by weight in thin, very narrow limits, and finally grouped into males and females. The packing is accomplished by the expert packers in the final packages which carry from ten to twelve birds according to their weights.

Like those of last year, the birds are going forward in a chilled condition, which can be accomplished satisfactorily by controlled temperatures of from 30 to 33 degrees F. during the whole route of transportation. As soon as the birds are graded and inspected at the assembling points, they are moved into refrigerator cars which go from place to place picking up lots until loaded. The whole movement is so timed that the birds will arrive at the ship's side at a date that will land them in London, England, about ten days or a week before Christmas.

Only birds of high quality—grades "A" and "B"—are to be exported, and the old difficulty of moisture appearing on the birds when taken from cold storage has been overcome. Canadian scientists have proved that by passing the birds through a conditioning chamber the stock is exhibited in perfect condition. This process will be used for the present shipment. As the satisfaction which comes from work

Causes of Loss Of Soil Fertility

Manures and fertilizers, their nature, functions, and application form the subjects for an interesting bulletin issued by the Dominion Department of Agriculture. Discussing the causes of loss of fertility, the bulletin says that one of the chief causes is leaching of plant food, especially nitrogen. Light and sandy loams are more apt to suffer loss of nitrogen than heavier soils, due partly to their loose and open character which favours leaching and partly to their favourable condition for bacterial activity. The organic matter content of the soil and its nitrogen are closely associated. Just as the organic matter is dissipated (as by excessive working under certain seasonal conditions), so the nitrogen disappears. On the contrary, methods which increase the organic matter tend to increase the soil's percentage of nitrogen.

Summer-fallowing, a cultural operation frequently necessary in order to eradicate weeds, and in the semi-arid districts of Western Canada to conserve the moisture, tends to destroy the organic matter of the soil and thus dissipate its nitrogen. The removal of plant food in crops under irrational systems of farming in which there is continuous cropping and no attempt made to return the element of fertility, is perhaps one of the most serious factors leading to decreased productivity of the soil. When the greater part of the crop is fed on the farm, as in dairying and stock raising, a large proportion of the elements of fertility is returned to the land in the form of manure, provided the fertilizer is properly preserved, and steps taken to prevent losses of plant food through formation and leaching.

Issued by Information Service, publications branch, Dept. of Agriculture, Ottawa, E. D.

BUY CHRISTMAS SEALS

13 SHOPPING DAYS TO CHRISTMAS

Tuber's Thin Skin

Bearing in mind that a potato is at all times a living organism, conditions must be provided which will prevent severe losses in storage, says the Dominion Botanist. Indeed, conditions are widely prevalent in Canada which cause in many cases a high percentage of loss in stored crops. Above all, it should be borne in mind that the tender skin of a freshly harvested tuber is easily scratched or broken, that diggers or implements may cause cuts or bruises which prove disastrous when such potatoes are placed in unsuitable storage. Rot and decay soon follow. Moist tubers, especially when cut or bruised, are the first to succumb. Therefore avoid bruising and, if at all possible, the placing of potatoes into any kind of storage until they are perfectly dry.

Roots For Beef Cattle

When roots are fed to beef cattle, turnips are invariably used, as it is fairly generally recognized that turnips are more suitable for fattening purposes than mangels, the latter being better suited for milk production. Experiments in the feeding of roots to beef cattle conducted at the various Experimental Farms and Stations of the Dominion Department of Agriculture have proved that roots have a high value for this purpose. Roots are particularly valuable when no other succulent feed is available. Pulped and mixed with cut or chaffed straw, or poor quality hay, they improve the palatability and feeding quality of these coarse roughages very much.

Muck And Peat Absorbents

Muck and peat when air-dried make excellent absorbents, says the Dominion Chemist. They are being used as such to good effect on many Canadian farms. Deposits of these materials are of no uncommon occurrence in many parts of the Dominion and their value in this connection is fairly well known. Digging and piling are all that is necessary. The use of peat, and muck is generally supplemental to the bedding proper, being found more especially valuable in the gutter behind the cattle, and in and about the farm buildings where there may be liquid manure or drainage to absorb. The bulk and the value of the resulting fertilizer are very considerably increased by the organic matter and nitrogen of this naturally occurring absorbent.

Certified Seed Value

Five years' records show that neither bichloride of mercury, used by many potato growers, for some years, nor formalin, controls blackleg in potatoes but that each seed treatment reduces the losses due to this disease. Taken as a whole, it would appear that the results obtained do not warrant the cost of treatment if certified seed is used. In the October issue of "Scientific Agriculture," summaries of seed treatment for potato blackleg are assembled by Mr. John Tucker and Mr. E. W. Harper, of the Division of Botany, Experimental Farms Branch, Dominion Department of Agriculture. The value of these summaries, especially from the grower's point of view, lies in the fact that they record results from representative potato growing areas in every province of the Dominion during five successive years in connection with the seed potato certification service.

HE WAS "IT"

A mild man encountered an escaped lunatic who rushed at him ferociously. The mild man fled. For ten miles they ran over plowed fields, through woods and ditches, till at last the madman overhauled the other.

He slapped him lightly on the shoulder and said:—"Tag! Now you chase me!"

YOU'RE NEXT —NO WAITING

Mr. Phillips, proprietor of barber shop in Hughes Building, wishes to inform the public that he has now Mr. Tibbodeau, former C. N. E. barber, added to his staff. 3527

Prominent Mar. Doctor Passes

(Canadian Press)

SAINT JOHN, N. B., Dec. 7.—Dr. A. F. Emery, 77, prominent in the public life of Saint John and the Maritime Provinces for 45 years, died in the general hospital here today after an illness of several weeks.

A few months after he graduated from Bellevue Medical College, New York City, in 1887, he became Superintendent of the General Hospital, entering private practice with organizing the first regulated body of trained nurses in this city.

When connected with the board of school trustees, he was instrumental in establishing vocational training here. He was one of the founders of the tuberculosis hospital at Saint John.

AUCTION SALE

OF OFFICE BUILDING, USED AUTOMOBILES, AUTOMOBILE PARTS &c.

I am instructed to sell by Public Auction on the premises of W. B. Prowse & Sons, 123 Fitzroy Street, Charlottetown, on Thursday, the 14th day of December, A. D. 1933, at the hour of 2 o'clock P. M., the following personal property, goods and chattels seized under a Chattel Mortgage from Waldron B. Prowse to Robert N. McNeill, Trustee, bearing date the 20th day of August, A. D. 1932, viz:

Office Building, Show Room, Garage and Store Room on South side of Fitzroy Street occupied by W. B. Prowse & Sons having a front of 32 feet on Fitzroy Street, and extending Southwardly over the lot leased from Mrs. Anne Leonard.

Used Cars: 1, Marmion Sedan, 8 cyl., 1, 1930-46 Chrysler Sedan, 6 cyl., Dodge Sedan, 1928 4 cyl., 1, DeSoto Sedan, 6 cyl., 1 Ford Coach, 1, 1-ton Ford Truck.

Automobile Springs, Engine Parts and all spare parts of automobiles, automobile accessories, air compressor, Emery Stone, Garage Tools and equipment, 1 L. C. Smith Typewriter 14 in. carriage, 1 National Cash Register, 1 Combination Safe and all other office furniture desks and counters goods and chattels in and about the premises of said Waldron B. Prowse at 123 Fitzroy Street, aforesaid, included in said Chattel Mortgage.

A list may be seen at the Office of MacKinnon & McNeill, Solicitors, Charlottetown.

Dated this 6th day of December A. D. 1933. J. A. McDONALD, Auctioneer.

SNOW-MOULD TURF INJURY

(Experimental Farms Note)

During the past three years, the Dominion Laboratory of Plant Pathology at Edmonton, Alberta, has found that the most important single factor of the cause of winter injury to lawns or putting greens is due to a parasite called snow-mould. The symptoms are first recognized as soon as the snow melts in the spring. As soon as the grass starts to grow, dead areas are found in the turf, which is sometimes covered with a aerial growth of the snow-mould fungus. The funus is of an found to be growing into and through the snow and ice over the turf. This fungus attacks the plants, killing the leaves, stems, and roots, thus destroying the crown of the plant. Such plants do not usually recover, and, thus, patches, somewhat circular in outline, often coalescing and covering a large area, are found.

The organism causing snow-mould has been isolated, inoculated into healthy plants, re-isolated, and identified by plant pathologists in Europe and North America. Control of snow-mould has been attempted in different ways with varying degrees of success. Obviously the provision for adequate surface drainage, although it may aid, will not alone control the disease. The use of resistant varieties of grass would be ideal, but unfortunately there are apparently no resistant varieties now known. Mechanical attrition, or brushing the turf, undoubtedly can be utilized in reducing the damage once it becomes evident, that snow-mould is present. However, this alone will not control the disease. Removal of the snow from the turf early in the spring, before melting starts, is also helpful, but, unfortunately, in some years when the snow nearest the surface is frozen, it is almost impossible to carry this out without injuring the turf. Therefore, about the only other alternative is the use of fungicides or chemicals for killing the parasite, but not the turf.

The most promising method,

New Shipping Rates Effective January First

(Canadian Press)

LONDON, Dec. 7.—The North Atlantic Shipping Conference which has been seeking means to avert a threatened rate war in ocean shipping, announced today that new rates will become effective after January 1.

"A complete agreement regarding classification of ships and consequential rate adjustments" was reached, said a statement following the meeting.

Details of the rates were not given but will be announced in Europe, Canada and the United States on December 23.

The meeting closed the conference, attended by representatives of the principal lines of Great Britain, France, Germany, the United States, Holland and Italy.

The official statement follows: "The adjourned meeting of the North Atlantic Conference under the chairmanship of J. B. Cantelero of the White Star Line, resumed their deliberations today and succeeded in reaching a complete agreement regarding classification of ships and consequential rate adjustments that have occupied attention of the lines for several months past."

which has been successfully used by using a preventive treatment which can be applied the previous fall, winter and early spring. The treatment is as follows: Mix 3 ounces of calomel with 1 ounce of corrosive sublimate with dry sharp sand in an eight-quart bucket about three quarts full of sand, for every 1,000 square feet of turf surface. It is essential that the size of the area to be treated be fairly accurately known, as mercury is quite toxic to the turf when used in excessive amounts. The fungicide should be thoroughly mixed with a small quantity of finely screened sand or compost if full application is to be made. It is preferable to allow the mixture to stand overnight. This mixture should be distributed evenly over the turf surface. Mercury is corrosive to metal and very poisonous care should be exercised.

Minard's Lignum for Colds.