

EXTENSIVE PREPARATIONS FOR P. E. ISLAND'S ANNUAL EXHIBITION---GREAT RACES AND OTHER ATTRACTIONS

Very Large List of Entries in Races—Keen Competition Can Be Expected Those Entered—Everything Now Ready for One of the Most Successful Exhibitions in the History of the Association

THE GRAND STAND ATTRACTIONS ARE THRILLERS

There are two events to come off this month viz the Dominion Election and the Exhibition at Charlottetown, the former is not an annual event, the latter is.

All the classes are well filled and there are more horses entered than have ever been entered before even when there were three days racing.

The following is a list of the entries.

PURSE NO. 1, THREE YEAR OLD TROT AND PACE.

- 1—Miss I. C. R., B. P., by Brazilian, entered by Ed. Crosby, Cape Traverse.
2—Iona Girl, B. M., by Commodore Ledyard, entered by Duncan Robertson, York Point.
3—Miss Aquiri, Br. M., by Aquiri, entered by J. M. Nicholson Charlottetown.
4—Nutwood, Bay St., by Commodore Ledyard, entered by Byrne Bros, North River.
5—The Comet, D. B. G., by Oakley Baron, entered by J. P. Irving Cape Traverse.

PURSE NO. 2, 2.40 TROT AND PACE STAKE.

- 1—Cherry Ripe, B. G., by Parkside entered by the Summerside Trotting and Breeding Club, Summerside.
2—Ginger, 2.39 1/2, B. G., by Progress Lad, entered by Hammond Kelly, Charlottetown.
3—Ferroll, Jr., 2.39 1/2, B. S., by Ferroll, entered by Dodd Dwyer, Pictou.

- 4—Zealot, entered by Michael McKenna, Vernon River Bridge.
5—Bonanza Princeton, entered by T. C. Edgett, Charlottetown.
6—Yankee Princeton, Bk. G., by Princeton, entered by P. P. Cahill, Tignish.
7—Nellie Oaks, Br. M., by Fair Oaks, entered by Dr. M. F. Devine, Kingston Station, Nova Scotia.
8—Premier, Br. M., by Commodore Ledyard, entered by H.C. Hooper, Charlottetown.

PURSE NO. 3, 2.30 TROT STAKE.

- 1—Kremnut, Br. G., 2.41, entered by H. H. Acorn, Souris.
2—King Dodd's, Ch. S., by Kalol, 2.19 1/2, entered by Dodd Dwyer, Pictou.
3—Queen Brazilian, by Brazilian, 2.19, entered by Spurgeon Gammon, New Glasgow, N. S.
4—Achille the Great, entered by Dr. J. T. Jenkins, Charlottetown.
5—Darion, Br. M., entered by J.B. Mitchell, Halifax, N. S.
6—Perfection, by Parkside, entered by Hotel Victoria Stables, Charlottetown.
7—Aquiri, Bay S., by Aquilin, 2.19 1/2, entered by J. M. Nicholson, Charlottetown.
8—Orwell Belle, Bl. M., by Commodore Ledyard, entered by A. S. Hewitt, Charlottetown.
9—Kinross, 3.08 1/2, by Kamores, 2.10 1/2, entered by T. G. Ives, Montague.
10—Our Protium, 2.38, B. M., by Our King, entered by P. A. Belliveau, Moncton, N. B.

2.25 TROT, 2.28 PACE.

- 1—Ferroll Jr., b. s., by Ferroll, entered by Dodd Dwyer, Pictou, N.S.
2—King Brazilian, by Brazilian, entered by Fred Walsh, North Tryon.
3—George Cresceus, 2.27, ch. s., by Cresceus, d. Crescent, by Ira Wilkes, entered by Frank Beales, Charlottetown.
4—Yankee Princeton, blk. st., by Princeton, d. by Yankee Wilkes, entered by P.P. Cahill, Tignish.
5—Hilda S., blk. m., by Commodore, d. Laly Hilda, by Allright, entered by Alf. A. Stewart, Southport.
6—Billy C., 2.25, ch. n. g., by Brazilian, d. by Wanda, entered by Hazen B. Chapman, Point de Bute, New Brunswick.
7—Ginger, 2.39 1/2, bay g., by Progress Lad, entered by Hammond Kelly, Charlottetown.
8—Sweet Marie, Ch. M., by Provider, entered by the Summerside Trotting and Breeding Club, Summerside.
9—Winnie M., B. M., by J. H. Linwood, entered by Hammond Kelly, Charlottetown.
10—King Dodd's, Ch. S., by Kalol, 2.19 1/2, entered by Dodd Dwyer, Pictou.
11—Cochato Lady, by Cochato, entered by W. S. Newson, Charlottetown.
12—Queen Brazilian, by Brazilian, 2.19, entered by Spurgeon Gammon, New Glasgow, N. S.
13—Admiral Beresford, Br. C., by Commodore Ledyard, entered by Dr. J. T. Jenkins, Charlottetown.
14—Viola, Bl. M., by Brazilian, entered by Duncan Robertson, York Point.
15—Perfection, by Parkside, entered by Hotel Victoria Stables, Charlottetown.
16—Frenchy, by Parkwood, entered by J. P. Irving, Cape Traverse.
17—Aquiri, Bay St., by Aquilin, 2.19 1/2, entered by J. M. Nicholson, Charlottetown, P. E. I.
18—King Brazilian, by Brazilian, entered by T. G. Ives, Montague.
19—Haskell, Br. St., by Directum, entered by J. B. Mitchell, Halifax, N. S.
20—Ozen D., 2.19 1/2, blk. by Brazilian, entered by Geo. O'Brien, Moncton, N. B.
21—Meadowvale, 2.18 1/2, bay g., by Torbrook, entered by Owen Trainor, Charlottetown.
22—Queen Marie, b.m., by Parkside, entered by Victoria Hotel Stables, Charlottetown.
23—George Cresceus, 2.27, ch. st., by Cresceus, d. Crescent, by Ira Wilkes, entered by Frank Beales, Charlottetown.
24—Baby Logan, 2.18 1/2, chn. m., by Brazilian, d. by Receptor, entered by Dr. J. A. Johnston, Tignish.
25—Ruth Hatheway, 2.23 1/2, b.m., by Alexander, entered by P. A. Bellevue, Moncton, N. B.
26—Premier, 2.20 1/2, bay g., by Commodore Ledyard, d. Double Lake, by

- 27—Ginger, 2.39 1/2, bay g., by Progress Lad, entered by Hammond Kelly, Charlottetown.

PURSE NO. 5, THREE MINUTE TROT STAKE.

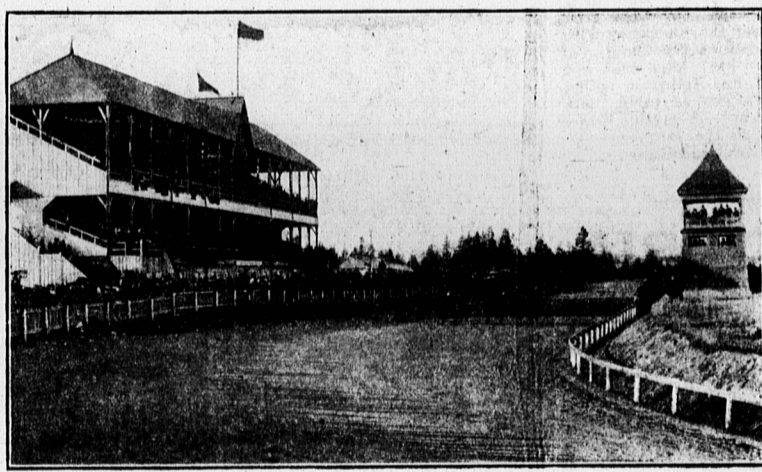
- 1—Sweet Marie, Ch. M., by Provider, entered by the Summerside Trotting and Breeding Club, Summerside.
2—Winnie M., B. M., by J. H. Linwood, entered by Hammond Kelly, Charlottetown.
3—King Dodd's, Ch. S., by Kalol, 2.19 1/2, entered by Dodd Dwyer, Pictou.
4—Cochato Lady, by Cochato, entered by W. S. Newson, Charlottetown.
5—Queen Brazilian, by Brazilian, 2.19, entered by Spurgeon Gammon, New Glasgow, N. S.
6—Admiral Beresford, Br. C., by Commodore Ledyard, entered by Dr. J. T. Jenkins, Charlottetown.
7—Viola, Bl. M., by Brazilian, entered by Duncan Robertson, York Point.
8—Perfection, by Parkside, entered by Hotel Victoria Stables, Charlottetown.
9—Frenchy, by Parkwood, entered by J. P. Irving, Cape Traverse.
10—Aquiri, Bay St., by Aquilin, 2.19 1/2, entered by J. M. Nicholson, Charlottetown, P. E. I.
11—King Brazilian, by Brazilian, entered by T. G. Ives, Montague.
12—Haskell, Br. St., by Directum, entered by J. B. Mitchell, Halifax, N. S.
13—Ozen D., 2.19 1/2, blk. by Brazilian, entered by Geo. O'Brien, Moncton, N. B.
14—Meadowvale, 2.18 1/2, bay g., by Torbrook, entered by Owen Trainor, Charlottetown.
15—Queen Marie, b.m., by Parkside, entered by Victoria Hotel Stables, Charlottetown.
16—George Cresceus, 2.27, ch. st., by Cresceus, d. Crescent, by Ira Wilkes, entered by Frank Beales, Charlottetown.
17—Baby Logan, 2.18 1/2, chn. m., by Brazilian, d. by Receptor, entered by Dr. J. A. Johnston, Tignish.
18—Ruth Hatheway, 2.23 1/2, b.m., by Alexander, entered by P. A. Bellevue, Moncton, N. B.
19—Premier, 2.20 1/2, bay g., by Commodore Ledyard, d. Double Lake, by



ONE OF THE GRACEFUL DE MACOS.



DE MACOS, THE SKILLED GYMNAST



View of the Race Course and Grand Stand at the Provincial Exhibition Grounds.

the percentage of tuberculosis among cattle slaughtered in public abattoirs, in different cities for different years ranged between 6.34 and 45.8 per cent.

THE DANGER FROM INFECTED FOOD.

In our country there being no inspection of herds, nor examination of milk, the latter, being the most dangerous especially to children, should receive our immediate attention.

When we see that a great deal of our tuberculosis may be derived from the milk of diseased cows, and many authorities agree that bovine tuberculosis is more virulent than the human, who would knowingly drink milk, eat butter or cheese made from the milk of tuberculous animals?

RETAIN ITS BOVINE CHARACTER.

As examples of changes in morphology, the following are instructive as well as interesting. A tubercle culture isolated from sputum was given a more perfect so-called 'human' morphological character than it originally possessed by passing it through cats. The same culture was given a perfect so-called 'bovine' morphological character by passing it through cattle.

by growth on solidified human blood serum. It is reasonable to assume if human blood serum can effect this change in a morphologically bovine tubercle bacillus from a bovine source, that the residence of tubercle bacilli from bovine lesions in the human body may likewise cause a change from so-called 'bovine' to so-called 'human' morphology.

THE POOR VENTILATION OF SOME STABLES.

It is in the dairyman's interest to house his cattle in winter in warm stables so as to produce as much milk as possible. Unfortunately, many of these stables are poorly ventilated. This reduces the vitality and resistance of the cow and leaves her more susceptible if she comes in contact with infection.

Red Lake, entered by W. A. Simpson, Sackville, N. B.
8—Robert C., 2.21 1/2, bag g., by Banner Hoy, entered by Jerry Maharr, Charlottetown.
9—Axbell, 2.18 1/2, br. st., by Adbell, d. Bessie Egbert, entered by Peter Carroll, Halifax.

Besides a number of special attractions have been secured.
1.—The 2 Clairmont Bros. in their Comedy Revolving Ladder Act.

They do handstands on the ladder, headstands, handstands on the back of a chair balanced on the ladder, trapeze and other chair work.

Their entire act is of the hair-raising kind and filled with thrills.
2.—The 2 De Macos—graceful, lithe, skilled gymnasts, whose acts are strikingly novel and original, including aerial acts.

3.—Piquo in the clown novelty act. He is considered one of the best clown bar performers before the public. To this he adds comedy pantomime which never fails to amuse.

4.—Mr. and Mrs. Couser with their 10 performing dogs. Trained animals always appeal to our people.

These dogs do everything but talk. Among them are dancing dogs, leaping dogs, dogs that jump and turn somersaults, clown dogs and every other kind of dogs.

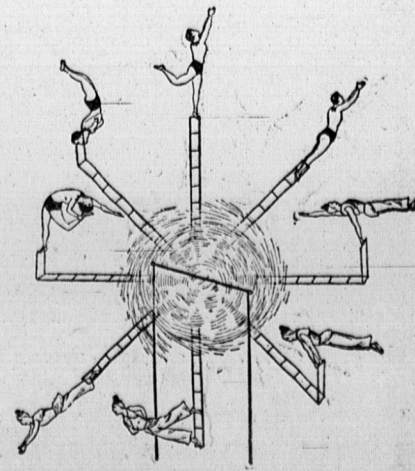
5.—Mr. and Mrs. Couser again in their great wire act. Suspended 10 feet above the platform with nothing but a silver wire for a foothold they perform as if they were standing on the ground without the slightest

sign of fear with all the confidence born of the knowledge of being perfect masters of the art. Enough said, come and see them.

6.—Robin—the great juggler—not a bird this time but a bird of a juggler, manipulating large and small objects with rare skill and keeping the comedy going at the same time. He is a top-notch in his line and truly a great entertainer.

7.—La Belle Faustina, the great contortionist. These attractions will be put on in the afternoons of the races between the heats in front of the grand stand and at night in the Arena Rink. The first performance will take place on Tuesday night, the first night of the Exhibition, in the Arena Rink where it is expected a great number will go to see them. They have been chosen through a New York agent who guarantees them to be first class in every respect.

With the Exhibition, the horse races and the special attractions a good week's outing should be assured—especially so when very cheap rates have been secured from railroads and steamboats. Men have been working almost all summer putting the grounds and buildings in order. Painters and whitewashers have also been busy. The harvest will be well over and the people will have an opportunity of enjoying a week's holiday. The politician who will be sad after the election will be made glad and the politician who is rejoicing that he will be made to still further rejoice.



The 2 Clairmont Brothers in hair-raising trapeze work.

THE DANGER TO PUBLIC HEALTH FROM DISEASE

The following paper on "Milk and its relation to the transmission of tuberculosis" was read before the Halifax branch of the British Medical Association by Dr. Alexander MacNeil, of Summerside:

Milk, its products and by-products are, as we all know, the most commonly used articles of food. It is used as a very meal, chiefly in a raw state, therefore, it is very important that we should have the supply pure and healthy. It is the chief article of diet of infants, it is the food we most often give to patients when ill and when their resisting powers are lowest.

There are many impurities which may get into milk, but the one I am most interested in at present is the tubercle bacillus, tuberculosis kills as many people, young and old, each year, as diphtheria, croup, whooping cough, scarlatina, measles and typhoid fever taken together, in other words, about 14 per cent.

Now it is claimed by medical authorities that not only is there a large percentage of infant deaths due to bovine tuberculosis, but that this form of the disease is, not unfortunately, contracted by adults. If this be true the necessity of seeing to the purity of our milk becomes self-evident. In a matter of this kind it is not easy to err on the side of caution, for with a substance like milk that enters so largely, and in such a variety of forms, into human food, it is hardly possible to over-estimate the importance of its purity and its freedom from virulent disease germs.

THE CAUSES OF PULMONARY CONSUMPTION.

If you consult your medical text books of 1880 you will find that the causes of pulmonary consumption are put down as follows:—"Hereditary, age, constitutional condition, occupation, habit, diet and digestion, interference with respiratory function, climate and locality, mental causes, previous existing diseases, and lastly, infection." The text-book I had used at that time says—"That it has been imagined that consumption is capable of transmission by infection through the breath, or by eating the flesh of animals that have been subjects of pythiasis, but the evidence in support of either of these modes of origin is extremely unsatisfactory."

But the discovery of President Koch in 1882, that all forms of consumption were due to a tiny micro-organism, has upset all those vague theories and today the true cause of consumption is a scientific fact, as well established as any of the laws of mathematics. But this very man, Professor Koch, as eminent an authority as he unquestionably is, affords a conspicuous example of how unsafe it is to accept without question the untested theories of any man, for in 1896, this very scientist lent his great authority to the view now accepted as a fallacy that bovine and human tuberculosis are not transmissible, that the disease as found in cattle was of a very different kind from the disease as it occurs in human beings, and that it was impossible for the tubercle bacillus which infects a cow to likewise infect a human being, and vice versa, and by that statement gave the public a sense of security that was no less dangerous than it was unfounded, for it is now one of the best attested facts in modern pathology that many persons, old and young, have been infected with tuberculosis from the milk of cows suffering from this disease.

TO BE GUARDED AGAINST IN EVERY POSSIBLE WAY. What I wanted here to insist on is that tuberculosis, whether bovine or human, is to be guarded against with all the means at our disposal, and that we should in this matter take every precaution against errors, lest, thirty years hence, we should find that we have been acting on a wrong theory as our forefathers had done in regard to their idea of the origin of the disease.

The point here to emphasize is not as to the degree of dilution in which the virulence of the tubercle bacillus will infect human beings with the disease, whether by inhalation or by ingestion, but the fact that we are just as liable to be infected by the bovine bacilli as by the human. Indeed some authorities go so far as to say that the milk fed to infants is the chief cause of infection, and that even all tuberculosis is of bovine origin.

Is tuberculosis common among cattle? In looking over the statistics of countries where the subject is receiving proper attention, we notice that

When we see that a great deal of our tuberculosis may be derived from the milk of diseased cows, and many authorities agree that bovine tuberculosis is more virulent than the human, who would knowingly drink milk, eat butter or cheese made from the milk of tuberculous animals?

According to Mohler and Washburn: "After a comparison of many tubercle bacilli from different sources and a careful search of the literature, concluded that the more the subject is studied the more numerous the instances become in which bacilli of special types are found occurring naturally in animals far removed from the species which may be supposed to be their natural host. They obtain cultures of tubercle bacilli from human lesions that were morphologically and biologically bovine types,