



Hampton Beach, Prince Edward Island

HAMPTON BEACH

THE CHRISTMAS STORE FOR HOLIDAY SHOPPERS

The ladies of this province will certainly revel in the showing now presented at Paton's big, bright, beautiful store, which is in full holiday attire with a full staff of obliging clerks.

The writer strolled through the store on Saturday or rather threaded a way through the eager shoppers, each one bent on getting something suitable from the splendid showing. Everywhere gifts, gifts, whether for mother, father, sister, brother or sweetheart, the article required was to be procured and the wonder is how such a stock could be secured, as quality marks the smallest article, no matter what the price.

FURS FOR GIFTS.

Furs seemed to call for particular attention and why not? For what would mother, wife, sister or friend be more delighted to receive on Christmas morning than a set of Paton's furs.

Of course, the very piece that you would prefer is quite likely to be treasured by some one else, and for that reason it is always wise to do your purchasing as soon as possible.

Every popular fur, every fashionable fur, is represented in the sale, from ponyskin to ermine, and Paton's are famed for the particular care they take in the making of their garments.

In the same department as the furs the lady shopper can rest at her lei-

sure and view the many lines here displayed. For instance, one rack is full of the nicest possible silk and satin underskirts, and if a well-dressed woman has one weakness more than another, it is for a stylish bright-colored, rustling silk or softly clinging satin petticoat. The range will suit the most fastidious and the article selected will be handsomely boxed and delivered as required. Another rack displays the many handsomely tailored suits, in blacks, blues and mixed tweeds which, for worth and correct cut cannot be duplicated. All the suits are well lined with grace in every line.

The winter coats, most acceptable gifts, are quite extensive and many pretty styles in strikingly nice cloths are ready for selection.

Kimonas as gifts for ladies and girls are always welcome and some splendid values are shown in pure wool fleece Eiderdown in old rose, cardinal, sax, mauve, navy and several other shades. There is also a large range of crepe Kimonas and dressing jackets, long and short, in very pretty designs.

At Christmas time shopping is doubly important—for there must be economy even in gift purchasing, and it is at Paton's that economy finds an important part in the planning of Christmas gifts. With assortments greater by far than in any similar period in the store's history, surely the busy shoppers will want to make

Paton's store a centre of holiday shopping.

GIFT WAISTS.

In dress waists the assortment is unusually brilliant in shadow lace, chiffon, messaline and crepe de chine in a variety of colors. These waists are daintily rich and a description would not do them justice. A visit will well repay the puzzled shopper.

Teddy Bear suits, an ideal gift for a small boy, are the all-wool outing suits in grey, brown, etc; four pieces—sweater coat to button up to the chin, long draw-over pants, with leather strap bottoms, hockey style toque and gauntlet style mittens. These suits are too cute for anything and the small boy will revel in their warmth.

DAINTY WHITE WEAR.

One of the nicest possible lines carried this year by Paton's is their white wear and here any young lady who appreciates merit in under apparel can secure the finest lingerie that heart could desire or purse pay for. The different articles are nicely boxed and easy choosing is assured.

HANDKERCHIEFS.

One can never have too many handkerchiefs, and this year Paton's have a range which cannot be excelled in the finest Irish linen, hemstitched, initialed or plain; cross bar lawn handkerchiefs daintily appropriate; in fact all kinds are represented from the finest lace to the nursery picture handkerchiefs. The man of the house is also remembered here and finest linen or the cheaper grades can be conveniently inspected.

FANCY LINENS.

The centre of attractions is this so attractively arranged this season

fancy linen booth that Paton's have and where one can, at a glance, pick up a piece of the finest linen or lace work, at a most moderate price. Truly this department is well worth a visit. A piece of linen is so convenient to send by mail and is positive to reach its destination in first-class order.

GLOVES! GLOVES! GLOVES!

Splendid assortments in ladies' gloves, and in men's too, for that matter, but the men's are kept in their own special department, near the front of the store where Mr. McDougall attends to their wants.

It might easily and conscientiously be said that Paton's display of ladies' kid gloves is the most comprehensive ever assembled for the Amas trade and gift shoppers will find it a pleasure making selections at this booth. There are gloves of all seasons and shades to suit the different leading costume shades.

DRESS LENGTHS.

Gift shoppers who have had dress lengths in their mind as gifts to some of their nearest friends will be delighted with Paton's offerings of handsome dress lengths in all-wool materials and silk and wool mixtures in the season's newest weaves and colorings.

Dresses can also be had in exquisite lengths of plain silk or colored silks in all the leading colors.

DAINTY NECKWEAR.

Someone in looking over this rare jewelry department remarked: "Give her a dainty collar for Xmas." Why not? She will be delighted to have one of these fancy collars for the holidays. They are procurable in either the round or epaulette styles, and made in the brightest colors or can be had in the dainty white with delicate touches of color.

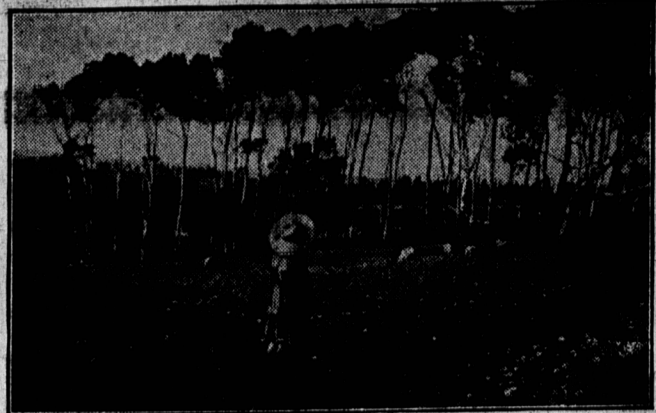
Knitted mufflers made of artificial silk are very soft and charming and include all the popular colors.

HOSIERY! HOSIERY!

A dainty pair of silk or a pair of hand-knitted embroidered stockings makes an ideal gift for any lady, or if the more substantial kind are more desirable a choice range is offered for selection. The man of the house might like a pair of silk hose, see the finish offered.

LEATHER GOODS.

Perhaps that friend craves and would like one of the many hand-knitted mittens which Paton's are displaying on the second floor, or even more appropriate might be one of their superior leather trunks, with trunk or suitcase which ever it is the selection can be expediently made with a pleasant customer at the other end.



A. P. E. ISLAND BEA UTY SPOT

FURNITURE.

Any member of the household could be suited in this department where each one is represented from the infant's basket to the granddaddy's clock. All the newest furniture is at Paton's and one cannot imagine with success the beauty and finish of the woodwork in some of the pieces.

The offering of beds, dressers and washstands is unsurpassed and the Xmas shoppers are asked to visit this department early to-day as the pieces are being quickly bought up. If it is an odd chair that will fill the Christmas gift, Paton's have it in the loveliest patterns and upholstery or if it is a music cabinet, china cabinet, music stand, radiator stand or stand for his book, Paton's have it in the latest of polished wood and beveled glass, with the latest turn or curve to the legs and handles. Ready for furniture Paton's store is in the lead.

There are sofas in abundance, in all styles, mattresses of unsurpassed quality, including the NoTUFF mattress each compartment of which is practically a distinct and perfect miniature mattress. The sanitary qualities of the Dixie NoTUFF Compartment Mattress are in themselves so important that the housewife who does not give them careful consideration, does herself an injustice.

Such a mattress would be a worthy Xmas gift.

The Dixie NoTUFF Compartment Mattress has no tufts. All of the comfort-yielding, rest-giving qualities of the filling are left there when the mattress is made. As a result the Dixie NoTUFF Mattress is at least 25 per cent. more comfortable than the tufted type simply because it has 25 per cent. more elasticity.

Persons who are sleeping on a tufted mattress are not getting the full measure of rest. Spend a night on a Dixie NoTUFF. Then—understand what a difference that 25 per cent. added elasticity makes. You'll get up in the morning with the realiza-

tion of what perfect rest really means.

A CARPET SWEEPER.

What woman living would not welcome a carpet sweeper in her home that saves time and labor? Paton's have some beauties including the three sweepers in one, the National's exclusive triple-brush adjustment. A finger touch raises or lowers the brush to suit the nap-high, medium-low. When the brush is almost worn out, it can be renewed and will continue to do work for years. This is only a suggestion—buy a carpet sweeper to-day and deliver it Xmas morning.

One could go on for hours telling of the many pleasures of a visit to Paton's, but why need one, when a visit is far more comprehensive and satisfactory.

A FEW SUGGESTIONS

PRETTY BEADED bags make dainty gifts. Some of the bags shown are plain or have gold or silver beads while various other come in silks of all the different shades so delightful for opera use.

Dainty pin cushions, round, square or oblong have nicely embroidered covers with the monogram thereon, the covers being attached with colored baby ribbons.

FANCY MANICURE SETS have the scissors, file and orange stick attached, together with thinny ribbons.

BABY SETS in white ivory, ebony and ebony and silver mountings are also offered, all nicely boxed.

TOILET Articles are conveniently arranged in boxes, and assorted pins in fancy cases can be had in endless array.

Fancy catchalls, notes, bags, etc., form the small part in Paton's Xmas bazaar this year and she could

really supply gifts for all the family without leaving the store.

REMEMBER THE BABY

Paton's have provided everything that the baby needs. Dainty little wool coats of softest fleeces, downy wools of several kinds and what adds more to Baby's sweet loveliness than a dainty wool jacket.

FANCY CUSHIONS

The range of fancy cushions is superb and can be seen in the linen department where the embroidered centre pieces, etc., are to be had. And one must not overlook the facts that the more general lines and fully supplied with handsome Irish linen and dainty cloth, napkins, towels, table blankets, flannel-eyes, blankets, sheeting, comforts, numerous patterns for waists, print covers, and magnificent lustrous satin and tulle for evening and afternoon dresses while the trimmings for hats, shoes and satins are the most complete to be had in the province.

Then the hat-trim department offers to match those to this Xmas showing and if a new hat of artistic lines is required, it will be supplied at short notice—and Paton's hats are known the Province over for individual style.

You are cordially invited to Paton's Xmas bazaar where in the Christmas joy and hurry and you will find every convenience offered in an up-to-date store at your pleasure. 3477.

DRIVING OUT CLAY

Electricity in the form of continuous currents, has been found to drive moisture from clay better than mechanical processes.

Great Steel Exporter

Germany exported 6,000,000 tons of iron and steel last year as compared with 5,400,000 tons in 1911 and 4,800,000 tons in 1910.

Camels for Argentina

The Argentine government plans to import camels in an experimental way to take the place of horses and oxen in semi-arid regions.

Hydro Power for Russia

Russia has wintered for an extensive irrigation of the water courses of Finland to furnish electric light and power to St. Petersburg.

Why Make Use of Patents

New Zealand has a law providing for the revoking of any patent not worked in that country within four years after it has been issued.

Why Expect Wars?

The French Academy of Sciences has a 100,000 prize awaiting the first person who establishes communication with some planet other than Mars.

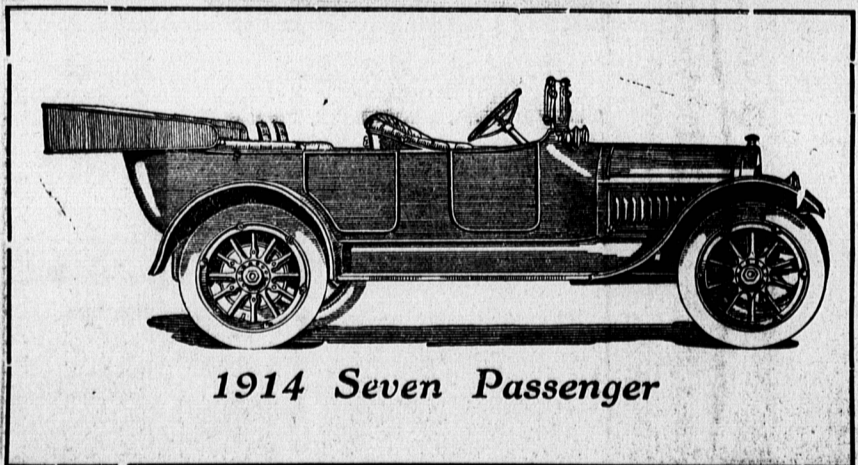
The Car That Has Set the Whole World Thinking

The Cadillac is the most dependable of motor cars. It gives the most enduring service. In ease and luxurious riding qualities, it has no occasion to acknowledge a superior. In economy of operation and maintenance there is none which enjoys a favorable comparison with it.

The Car is finished to satisfy the most particular buyer. The low graceful lines and easy riding qualities will convince you.

You make no mistake in purchasing a Cadillac as it has stood the test of time.

The 1914 Cadillac



1914 Seven Passenger

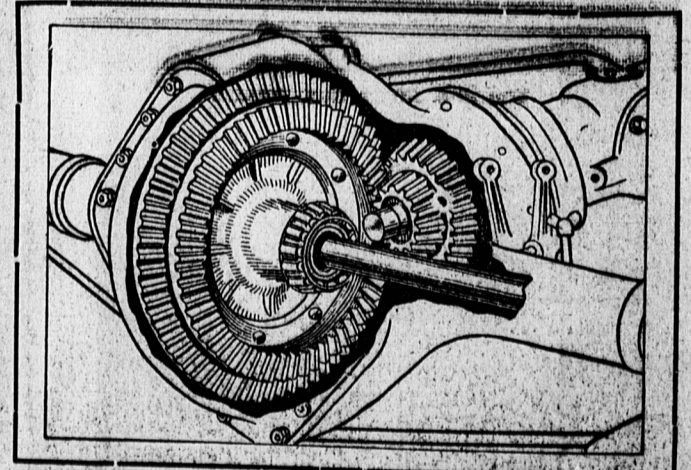
Cut out and mail today

B. R. HOLMAN,
154 Queen St.
Charlottetown, P. E. I.

Kindly send full information about the Cadillac, including features of the new 1914 model.

NAME.....

ADDRESS.....



Two-Speed Direct Drive Axle

In this new feature the Cadillac Company were more gives evidence of its leadership in motor car progress.

By means of this special you can change from the low direct gear to the high direct gear and get 42 p. c. greater speed of the car, with no increase in engine speed.

This advantage will be appreciated by motorists, as it means a more powerful motor in operation. It also reduces the upkeep of the car, because there is a decrease in speed of the moving parts, and this means less wear.

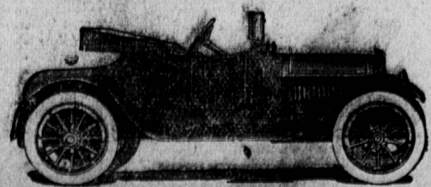
A Standard by which Motor Cars are Judged

The recognition of the Cadillac as a standard by which motor cars are judged, is not one of chance. For ten years the Cadillac has been manufactured and marketed upon well defined principles. The adherence to those principles has been the dominant factor in Cadillac success. The Cadillac has never aspired to ideals set by others; it makes its own ideals and raises them higher and higher.

In construction this car is no mere assembly of frame, engine, transmission, axle and body components, obtained here, there and everywhere, that they may be had at the lowest price and without regard to their harmonious relation, one to the other.

In the Cadillac there are more than two hundred and fifty parts on which there are more than four hundred operations which are not permitted to deviate the one-thousandth part of an inch, from the prescribed limits of measurements.

The Cadillac system of inspection is so exacting that it is impossible for an imperfect part to be incorporated in the car. Every part is scrutinized by experts before it is placed in the car and after the car is finished it is subjected to a further test before it leaves the factory.



1914 Roadster

B. R. HOLMAN, Provincial Representative
154 Queen St., Charlottetown, P. E. I.



1914 5 Passenger