

PROVINCE-WIDE INTEREST IN FOX SHOW

FUR MARKETING



OUR selling connections in the Silver Fur Marketing field are unsurpassed.

OUR Pelting Plant, with Electric Drying rooms and skilled Staff, is unexcelled.

OUR expert grading talent has elicited the highest praise from market authorities.

OUR charges work out so that the marketing costs are less than if you shipped direct to the auctions.

OUR advances are liberal and the interest rate thereon is only 5 per cent. per annum.

YOUR INTERESTS ARE OUR INTERESTS.

WE ARE WAITING TO SERVE YOU AT 55 QUEEN STREET, CHARLOTTETOWN Prince Edward Island

Charlottetown Fur Sales Limited

WHITHER GOEST THOU

Value Of Fox Show Not Confined To Exhibitors, But Extends To All Concerned In The Industry

(By W. R. Shaw)
The Fox Show, which will be held within the next few days, stands in the very forefront of features of this kind throughout the world. Familiarity with an industry that has meant within recent years economic salvation to a large number of our people, and close proximity to this great show has caused to some extent an under-estimation of this great exhibition of a modern industry. Distance and unfamiliarity might possibly have developed a more absorbing interest in the Show, and a more intense desire to visit it and enjoy its fascination, beauty, and thought-provoking demonstrations. In a center where thousands are engaged in fox ranching, the congregation at one point, in intensive competition of from 400-600 of the industry's best foxes, should exert an irresistible attraction for the great majority of those who are daily caring for foxes in their own ranches.

Not For The Few
The criticism is sometimes heard that Exhibitions of this kind are only for the few who have superior animals. This is true in so far as actual Exhibitors are concerned,

but the inspiration and value of the Show extends to every individual who is engaged in the industry. In any well balanced and prepared scheme of livestock extension, the Exhibition must occupy a prominent place. It brings into the public gaze the best productions of the breeder's skill, his methods of breeding, feeding, and care, and through the impact of observation and contact, as well as through its promotional and sense appeal, directs the efforts of the breeder at large to greater effort in the way of improvement.

The first Fox Shows do not reveal the names of many who today are prominent Exhibitors and prize winners. The Fox Show of this year will not reveal the names of many who will be winners five years hence. Why? Because a constant appeal and influence is being exerted, with the result that new effort, new resolves, new enthusiasm is gradually bringing into the forefront of the industry, breeders who have raised the level of their herds to the best standards of the species.

The Educational Factor
The educational machinery now under process of construction in

Canadian Turnips Exported To U. S.

The best export market for turnips grown in Canada is the United States. Of the total exports of turnips in the fiscal year ended March 31, 1937, amounting to 2,623,787 bushels, 2,612,010 bushels went to the United States. In the fiscal year ended March 31, 1936, the exports to the U.S. were 2,375,906 bushels. Only negligible quantities of turnips are supplied to the United States by other countries so that the U.S. market may be regarded as a dependable one for the Canadian exportable surplus depending upon production and business conditions in general. The Canada-United States Trade Agreement which became effective in 1938 reduced the duty on turnips from 25 cents per 100 lb. to 12-1/2 cents per 100 lb.

This province in relation to the Fox industry is being perfected, through organization, education, demonstration and exhibition, so that all our breeders will ultimately feel its direct influence. The interest of the average has been aroused and intensified. This interest should reach its climax at the Great Show during the first week in November, at Charlottetown, and at the Fox Shows at Alberton, Borden and Montague at later dates. Every interested breeder of foxes should use the fine advantages so provided, and attend these Exhibitions.

Productive Pastures

(Experimental Farm Note)
More than 13,600,000 acres are devoted to pasture production in Eastern Canada and British Columbia. This represents more than one-quarter of the total area of occupied agricultural land. It is a matter of serious significance that many pastures have a carrying capacity of less than one mature animal to every four or five acres, whereas a good pasture should support one animal on a single acre during the grazing season. The aim should be to improve these extensive areas of poor pasture and make them more productive and more profitable.

In experiments by the Field Husbandry Division, Dominion Experimental Farm, it has been found that this improvement may be effected on certain areas simply by the application of commercial fertilizers. Such a practice has resulted in an increased carrying capacity in Experimental Farm experiments of 65 per cent at Ottawa, 68 per cent at Fredericton and 107 per cent at Ste. Anne de la Pocatiere.

When grass predominates the sward an application of 500 pounds of a 4-12-6 fertilizer every 4 years is recommended with an additional application of 100 pounds of sulphate of ammonia or its equivalent in some other nitrogen carrier in the intervening years. Where clovers are prevalent, an application of

500 pounds of a 2-12-6 or 0-12-6 fertilizer is often suitable. On light sandy soils it may be profitable to increase the potash to 10 per cent. When the sward is thin unproductive and badly infested with weeds, the pasture may be improved more profitably by plowing, cultivating, applying manure or commercial fertilizer, and reseeding with a suitable seed mixture. If the area is to be used first for hay and later for pasture, the seed mixture may include timothy 6 pounds, red clover 4 pounds, alfalfa 4 pounds, alsike 2 pounds, Kentucky of Canada bluegrass 3 pounds, red top 2 pounds, and white clover 1 pound per acre. Where alfalfa does not grow well, it may be omitted and the red clover increased by 2 pounds. Where a permanent pas-

ture is the aim, the timothy should be increased to 9 pounds and the red clover and alsike reduced by one-half. This latter mixture may be seeded with a nurse crop of oats at 2 1/2 bushels per acre or a mixture of 1 1/2 bushels of oats and 15 pounds of Sudan grass per acre. The nurse crop may be pastured without injury to the new seeding.

Following these suggested treatments the pasture should be uniformly grazed to about 2 inches in height, droppings should be scattered by means of a harrow, and ungrazed tufts of grass and weeds should be mown just before heading. Such practices should assist in converting unproductive fields into productive pastures.



Cloth Coats

Fur Trimmed Chamois Lined

WOLF RED FOX RACCOON PERSIAN LAMB ELECTRIC SEAL BEAVER DeLUXE MUSKRAT

\$15.50 to \$52.00

Untrimmed Cloth Coats FLEECE CLOTH CHAMOIS LINED ALL HIGH SHADES

\$16.95 to \$22.95

Fall Millinery

VELOURS VELVETS FUR FELTS WOOL FELTS

\$1.95 to \$4.95

R. P. SIMPSON

FOX Breeders—MINK Breeders — FUR Trappers!

Before selling any of Your Pelts Try

"SHUBERT" offers you a ready, "spot-cash," better outlet for your pelts. No commissions to pay — no selling or buy-back charges — no interest — no delays and no gambling with your pelt profits. We buy your skins out-right and pay you "spot-cash."

It will PAY YOU to try "SHUBERT" before you sell one single skin to anyone. Try "SHUBERT" and see how much MORE PROFITABLE it will be for YOU. A trial will convince you.

Write for latest fur market report, shipping tags, etc. Sent FREE on request.

A. B. SHUBERT Co. Winnipeg, Man.

If you want quick results on your

SILVER FOX PELTS SHIP TO

I. Krieger, Ltd.

15, Great Trinity Lane, London, E.C. 4, England
Best offers on ten Skins or more submitted by cable.

For further instruction and shipping tags, write to

MAAS & STEFFEN INC.

St. Louis, U. S. A.

Here Mr. Fox Farmer You'll Find Perfect Facilities For

Pelting, Scraping and Cleaning Your Fox Skins

The facilities and services of my Pelting & Cleaning Plant include humane methods of killing, careful pelting, stretching on proper sizes of boards, scraping and drying off the surplus fat in proper temperatures, and most essential of all—work done by expert workmen.

Our special "Maizo" method of cleaning adds the finishing touches to your fine furs.

EMMET GAVIN

Fox Pelting & Cleaning Plant

Morell Hotel Warehouse

136 Kent Street Charlottetown, P.E.I.

Canadian Fur Breeders and Trappers

NOTE THESE SALE DATES

Silver Fox Sales

13th DECEMBER, 1937
Last receiving date in London, 3rd December

10th JANUARY, 1938
Last receiving date in London, 31st December

28th MARCH, 1938
Last receiving date in London, 18th March

23rd MAY, 1938
Last receiving date in London, 13th May

19th DECEMBER, 1938
Last receiving date in London, 9th September

General Fur Sales

WINTER — 1st FEB., 1938
Last receiving date in London, 11th January

SPRING — 2nd MAY, 1938
Last receiving date in London, 11th April

SUMMER — 26th JULY, 1938
Last receiving date in London, 8th July

(Beaver, Fox, Blue, Musquash, Mink, and Persian Lamb)

AUTUMN — 24th OCT., 1938
Last receiving date in London, 3rd October

Bring or ship your Pelts to the nearest H B C Fur Agency where you will be sure of receiving the fairest possible price for the products of your Ranch or Traps.

Hudson's Bay Company



FOX WIRE

ALL SIZES IN STOCK



"PROTECTO" Preservative Paint

FOR BEAUTIFYING AND PRESERVING SHINGLES AND ROUGH LUMBER

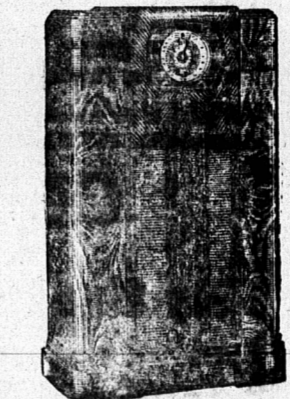


UNIVERSAL

Food Choppers FROM THE SMALLEST HOME MODEL TO THE POWER DRIVEN MODEL FOR LARGE FOX RANCHES

FENNEL AND CHANDLER

Beautiful to Look at...
Delightful to Hear...
EASY TO OWN



GENERAL ELECTRIC Magic-Tone RADIO

COME to our store... compare the new General Electric Radio in tone, performance, beauty of design, and in price with any and all other radios. We'll wager you'll choose a G-E for you'll find it's your best radio buy.

Outstanding among the advantages of the new G-E Radio that you'll enjoy trying for yourself is Touch Tuning. Touch a button—that's all... and instantly in comes the program you want, clear as a bell.

There's a G-E Radio to suit your individual needs at a price within your budget. See them at our store today.

PRICES FROM \$34.75 UP TERMS TO SUIT PURCHASER

Toombs Music Store

167 Queen Street Phone 185-L

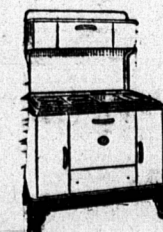
GENERAL ELECTRIC Magic-Tone RADIO WITH TOUCH TUNING

Don't Be A Kitchen SLAVE

Don't coax and struggle with a balky range. No matter how good your recipe, it can't turn out right unless the range does its part.

Get a Fawcett Better Baking Range

and forget about baking failures due to a faulty range. Fawcett Better Baking Ranges are scientifically designed, and built to give years of satisfactory service. They come in large or small sizes to suit your kitchen—for Coal, Wood, Gas, Electricity or Oil. Many handsome enamel finishes. All coal and wood ranges have super life firebox linings. Modernize your kitchen now with a Fawcett Better Baking Range.

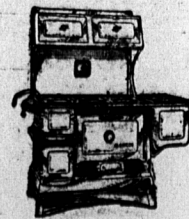


New Streamline Model

Here is a range that combines beauty with all the better baking qualities for which Fawcett's are famous. Streamline styling, stainless enamel finish, Minute Minder, Automatic Oven Light, and you've never owned a range that will do so much cooking on so little fuel.

Ranges, for Coal, Wood, Oil

Whatever kind of fuel you prefer, a Fawcett Range always makes good cooking easier, and prices are well within the reach of even a modest budget. Come in and inspect them today.



Manufactured by ENAMEL & HEATING PRODUCTS LTD. SACKVILLE, N. B.

LOCAL DISTRIBUTORS

T. G. IVES

219 Great George Street—Open Evenings—Phone 1117