

BRUCE STEWART & CO., Ltd. Charlottetown

PRINCE EDWARD ISLAND MARCH 1918

ENGINE FITTINGS AND SUPPLIES

RESERVE THIS SHEET FOR FUTURE REFERENCE

As we are in the Engine and Supply Business we know your requirements, and are in a position to fill your orders promptly. If you want anything not listed write for our prices. If you want goods by mail include plenty of postage, any over will be returned. Terms cash with order. Special prices to dealers. Repairs of all kinds promptly attended to. Our Imperial Motor Catalog is free for the asking. Owing to the unsettled condition of the market all prices are subject to change without notice.



No. 6 Columbia Igniter

40c each

Owing to the increase in price caused by the war we have been obliged to raise the retail price on Columbia Igniters.

Costs the same, lasts longer, best for Ignition work, special price in barrel lots to dealers.

FRESH EVERY WEEK

Storage Batteries

Suitable for Motor Boats, Automobiles or Farm Lighting Plants. All sizes. Prices on application.

Spark Plugs



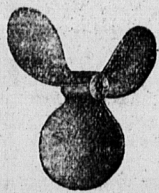
Rajah The Standard Plug	Postage	
Champion Spark Plug	1.00	5c
Rajah Clip	10c	
Rajah Hoods, each	60c	7c
Rubber Nipple	15c	2c
Rajah Porcelain	50c	2c
Rajah Gasket	5c	
Splitdorf Spark Plug	1.25	5c
Champion X. Plug	.75c	5c

Battery Testers



High Quality Instrument \$1.25
Postage extra 4c

Hyde "Pattern" Turbine Type Propellers



Made of Good Bronze and Polished Right Hand
Prices on Special Diameters and Pitches on Application

2 Blade

3 Blade

12in. dia. 12in. pitch	\$ 4.55	12in. dia. 12in. pitch	\$ 6.60
14 " 14 "	5.75	14 " 16 "	8.40
16 " 16 "	7.80	16 " 16 "	11.40
18 " 18 "	9.90	18 " 20 "	13.80
20 " 20 "	13.20	20 " 20 "	18.00
22 " 22 "	16.20	22 " 22 "	21.60
24 " 24 "	19.20	24 " 24 "	27.60
26 " 26 "	24.00	26 " 26 "	33.60

Boring and keying up to 16in. 75c
Boring and keying over 16in. \$1.00

Weedless Propellers

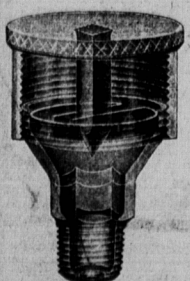


Guaranteed not to foul in the heaviest weeds. Prices on application. State size wanted.

Motor Boat Shafting

Tobin Bronze		Steel		Fitting to Brass	
Diameter	Per ft.	Per ft.	Propellor	Nuts	
3-4 in.	\$1.20	25	.75	.15	
7-8 in.	1.98	30	.85	.20	
1 in.	2.15	40	1.00	.30	
1-1/8 in.	2.70	50	1.00	.30	
1-1/4 in.	3.35	60	1.25	.40	
1-1/2 in.	4.80	90	1.25	.50	
2 in.	8.50	1.50	1.50	1.00	

Grease Cups Solid Brass



No. 1 1-4 male Thread, 1 1-2 dia. outside. Price each 60c.

No. 2 1-4 male Thread, 2 dia. outside. Price 75c



Spark Coils

The K. W. is the best known Spark Coil on the market, has platinum Iridium points and is guaranteed not to break down.

Single K.W. \$9.00 each
Double K.W. \$16.00 each
Canadian Single Coil \$6.50
Canadian Double Coil \$13.00

Sampson Single Coil, a good reliable coil \$6.50
Make and break Spark Coils, Metal case a first class Coil \$2.50
Round Coil in Fibre Case \$2.50
K.W. Coil Springs and Points \$3.25 pair
Sampson Coil Springs and Points, old or new \$2.50 pair
Canadian Coil Springs and Points \$2.00 pair
Coil Points, only, each 50c



Single Lever Switches, as cut 40c
Double Lever Switches, as cut 50c
Simpleton Switch Spring connection, Single 35c Double 40c

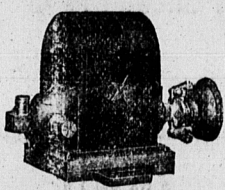
Battery Connectors each 3c

ENGINE ENAMEL

Green Engine Enamel, 1-4 pints 40c
Green Engine Enamel, 1-2 gals. \$6.00

Ignition Cable

Highest grade manufactured High grade, insulated Ignition Cable.
Braided-over-rubber Primary, per ft. 7c
Rubber Covered Primary, per ft. 5c
High Tension, Rubber covered waterproof Ignition Cable, per ft. 10c
Packard Braided Secondary, per ft. 25c



Comet Magnetos

"A Regular Little Power Plant"

Type L, Jump Spark \$15.00
Type LC, Make and Break or Jump Spark \$16.00
Type LX, Jump Spark for slow speed engines and multiple cylinder engines \$18.00
Type L will fire one cylinder Jump Spark engine and furnish light up to 15 or 20 c.p. Type LX will fire 2 or 4 cylinder engine and supply light up to 30 c.p.

TIMERS



Made in our own Factory Best construction throughout. Postage each—14c
1 Cyl. each \$5.00
2 Cyl. each \$5.50
3 Cyl. each \$6.00
4 Cyl. each \$6.50



SILEX Grease Cups

No. 901 1 1/4" dia Inside 1/4" pipe tbd price \$1.65
No. 902 1 1/2" dia Inside 1/4" pipe tbd price \$2.00
No. 903 1 3/4" dia Inside 3/8" pipe tbd price \$2.25
No. 904 2" dia Inside 3/8" pipe tbd price \$2.50
No. 905 2 1/4" dia Inside 1/2" pipe tbd price \$3.00
Automatic Spring Compression feed.



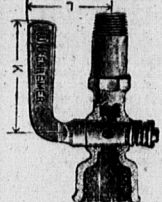
Samson Grease Cups

Polished Brass, T Handle Screw Plunger, a good cup at a moderate price. If you want a real good cup for gasoline engines buy the Samson.
No. 802 1 1/4" dia Inside 1/4" pipe tbd price \$1.65
No. 803 1 1/2" dia Inside 1/4" pipe tbd price \$2.00
No. 804 2" dia Inside 3/8" pipe tbd price \$2.50
No. 806 2 1/2" dia Inside 1/2" pipe tbd, price \$2.90
If you want a real good cup for gasoline engines buy the Samson.



Horizontal Regrinding Check Valves

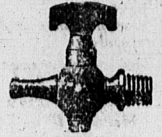
for gasoline engine pumps
Size 3-8 in. price \$1.40
Size 1-2 in. price \$1.60
Size 3-4 in. price \$2.30
3-8 guides 40c 3-8 discs 30c
1-2 guides 45c 1-2 discs 45c
3-4 guides 50c 3-4 discs 45c



Priming Cups

High Grade

1-8 inch 65c
1-4 inch 75c
Postage 4 cents



Drain Cocks

1-8 inch 30c
1-4 inch 35c
Postage 2 cents



Ball Thrust Bearings

Hardened Steel Balls in steel cage.
1 1/16 1 1/4 1 9/16 1 3/4
\$1.00 \$1.50 \$2.00 \$2.50
Price of other sizes on application.



Copper Gasoline Tubing

1-4 in. outside diameter, per foot 20c
68 F Tubing Connectors, each 20c



Check Valves

For Two Cycle Engines
1 in. 1 1/4 in. 1 1/2 in.
\$2.75 \$3.25 \$4.00
Postage 14c each



Schebler Carburetors

All parts of Schebler Carburetor carried in stock

The World's Standard

1 in. 1 1/4 in. 1 1/2 in.
\$12.00 \$12.50 \$20.00

ENGINE PACKING

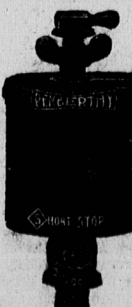
Asbestos Cloth, per sq. ft. 50c
Compressed Asbestos Fibre, per sq. ft. 50c
1-4 square flax stuffing box packing per ft. 50c
Asbestos Paper, per sq. ft. 5c
Pump Packing, per ft. 2c

Gas Engine Oils and Grease

We have a car-load on hand in barrels and cans. Lowest prices and quick delivery. Quality guaranteed.

Gargoyle Mobil Oils, highest grade oils, Mobil A-B-E and Arctic in 1 gall. cans \$1.25
Mobil B is extra heavy. Try it for any engine with poor compression.

Polarine in 4 gallon cans, per can \$3.40
Polarine in 1 gallon cans, per can \$1.00
Polarine in half-gallon cans, per can 60c
Veedol in 1 gallon cans, per can \$1.00
Veedol in half-gallon cans, per can 60c
Transmission Lubricant. For automobile transmissions or Motor Boat reverse gears.
A and BB, in 5 pound cans, per can \$1.00
Special price in barrels. Get our Quotations.
Arctic Cup Grease in 1lb. cans 25c



Short Stop Sight Feed

Oil Cups with brass shells to protect glass.
Size Dia Height Size Price
glass glass thread
202 1 1/2 1 1/2 1/4" \$2.10
204 2 1/2 2 1/2 3/8" \$2.70
SULTAN Gas Engine Oil
Cups with check valve.
652 1 1/2 1 1/2 1/4" \$2.10
654 2 1/2 2 1/2 3/8" \$3.60
655 1 1/2 1 1/2 1/4" \$4.50

Extra Glasses 1 3-4x1 1-2 25c
Extra Glasses 2 1-4x 2 1-8 35c
Extra Washers, each 5c

EJECTORS Steam Jetor Pump



Just the thing for lobster factories where steam is used. Will lift water 20 to 25 ft. Use it for washing down. With salt or fresh water.
No. 2 Steam conn. 1/2" section && delivery 3/4" Price \$4.75
No. 3 Steam conn. 3/4" section and delivery 1" Price \$6.00
No. 4 Steam conn. 1" section and delivery 1 1/2" Price \$8.00
Capacity 500 to 1000 gals per hr with 65 lbs. steam.



SPEED INDICATOR

For taking the speed of engines, shafting, etc., each \$2.50 post paid



Genuine Stilson Wrenches

6 in. \$1.55 8 in. \$1.75 10 in. \$1.95 14 in. \$2.70
18 in. \$3.75 24 in. \$5.00

Nickel Plated Pliers

Forged Steel makes pipe wrench, screw driver and wire cutter 50c.
postage 7c

Heavy Coppered Spring Oilers 30c. postage 7c

Screw Driver 1-4 x 4in. Blade 15c. postage 6c.
Screw Driver 5-16 x 4 Blade 25c. postage 6c

BRONZE IAG, SCREWS

3 1/2 x 3-8 inch each 30c
4 x 7-16 inch each 35c
4 x 1-2 inch each 40c

STUFFING BOXES

Extra long, lots of room for packing. Made of Cast Bronze and well finished.
3-4 inch \$2.25, postage 14c
1 inch \$2.75, postage 18c
1 1/8 inch \$2.75, postage 20c
1 1/4 inch \$3.25, postage 22c
1 1/2 inch \$6.00, postage 30c

Brass Water Intake Scoops

1-2 pipe size with locknut, each \$1.75
3-4 pipe size with locknut, each \$2.25
Postage each 10c

Engine Suction Hose, High Grade

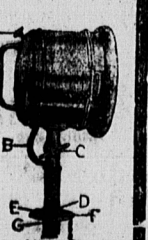
1-2 in. per foot 18c
5-8 in. per foot 20c
3-4 in. per foot 25c
1 inch per foot 35c
1 1/4 in. per foot 50c
1 1/2 in. per foot 65c

Cello Search Lights



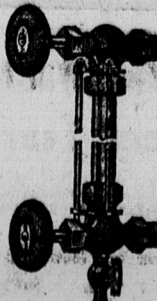
Cello Star No. 9.

Run from 6 dry sets, or storage Battery. Every boat should have one. Will throw light 1000 ft. Fitted with 6 & 8 c.p. Bulb The wireless model can be detached from Deck plate in a moment and the water tight plug screws in its place can be pointed in any direction.
No. 9 in. Polished Brass barrel 6" dia 6" long. Price each \$8.50
No. 10 Polished brass or black and nickel each \$10



Cello Wireless No. 10

BRASS



Water glass fittings with glass guards.
84 G, 1-2 in. pipe
Glass 5-8x12 inch each \$3.00
1-2 inch polished brass, each. \$1.00

Injectors

Size H.P. of Boiler	Size pipe	Price
A 8 to 10	1/2"	\$10.00
B 17 to 32	3/4"	13.25
C 40 to 65	1"	21.00

PARTS

	A.	B.	C.
Steam Jet	45	55	65
Suction Jet	45	55	65
Delivery Jet	2.00	2.50	5.00
Coupling Nut	40	50	60
Tail Piece	40	50	60
Overflow Cap	50	60	70
Overflow Valves	60	70	85
Overflow Hinge	15	25	35
Plug	1.00	1.25	1.50
Strainer	55	65	70

